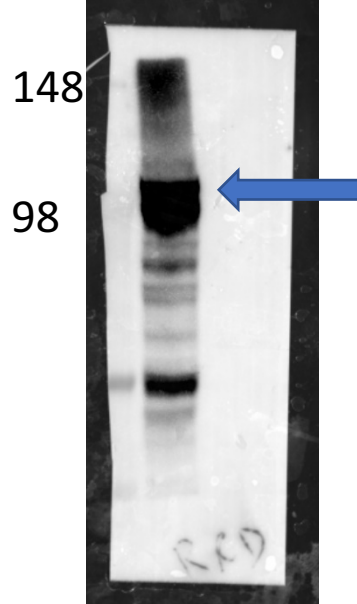


R&D MAB89661 Rabbit mAb to Munc13-4

Lot CJRJ0115091

PBMC lysate
Ran on 8% gel Life Tech.
Semi-dry Biorad transfer
1° at 1:1000 dilution
Imaged on Biorad Chemidoc Touch
Ladder Seeblue plus2



Rabbit anti Munc13-4 detects a band between 100-120kDa which is the correct approximate size. Lane loaded with lysate from approximately 300,000 human PBMC. Cells lysed on ice with a sonicator in RIPA buffer. Lysates frozen at -20°C in 6x loading dye before use.

Whole blood lysate after
RBC lysis buffer (eBioscience)
Similar experiment protocol

