

# Product Datasheet

## TRAF-3 Antibody (PSH01-30)

### NBP3-33042

Unit Size: 100 ul

Store at 4C short term. Aliquot and store at -20C long term. Avoid freeze-thaw cycles.

[www.novusbio.com](http://www.novusbio.com)



[technical@novusbio.com](mailto:technical@novusbio.com)

Protocols, Publications, Related Products, Reviews, Research Tools and Images at:  
[www.novusbio.com/NBP3-33042](http://www.novusbio.com/NBP3-33042)

Updated 8/7/2025 v.20.1

Earn rewards for product  
reviews and publications.

Submit a publication at [www.novusbio.com/publications](http://www.novusbio.com/publications)

Submit a review at [www.novusbio.com/reviews/destination/NBP3-33042](http://www.novusbio.com/reviews/destination/NBP3-33042)



**NBP3-33042**

TRAF-3 Antibody (PSH01-30)

Product Information	
Unit Size	100 ul
Concentration	1 mg/ml
Storage	Store at 4C short term. Aliquot and store at -20C long term. Avoid freeze-thaw cycles.
Clonality	Monoclonal
Clone	PSH01-30
Preservative	0.05% Sodium Azide
Isotype	IgG
Purity	Protein A purified
Buffer	PBS (pH7.4), 0.1% BSA and 40% Glycerol
Target Molecular Weight	64 kDa
Product Description	
Host	Rabbit
Gene ID	7187
Gene Symbol	TRAF3
Species	Human, Mouse, Rat
Immunogen	Recombinant protein within human TRAF-3 301-568 / 568. (Uniprot: Q13114)
Product Application Details	
Applications	Western Blot
Recommended Dilutions	Western Blot 1:1000



## Images

Western Blot: TRAF-3 Antibody (PSH01-30) [NBP3-33042] - Western blot analysis of TRAF-3 on different lysates with Rabbit anti-TRAF-3 antibody (NBP3-33042) at 1/1,000 dilution.

Lane 1: TF-1 cell lysate (20 ug/Lane)  
 Lane 2: THP-1 cell lysate (20 ug/Lane)  
 Lane 3: 293T cell lysate (20 ug/Lane)  
 Lane 4: Jurkat cell lysate (20 ug/Lane)  
 Lane 5: A549 cell lysate (20 ug/Lane)  
 Lane 6: RAW264.7 cell lysate (20 ug/Lane)  
 Lane 7: NIH/3T3 cell lysate (20 ug/Lane)  
 Lane 8: Mouse brain tissue lysate (40 ug/Lane)  
 Lane 9: Rat spleen tissue lysate (40 ug/Lane)

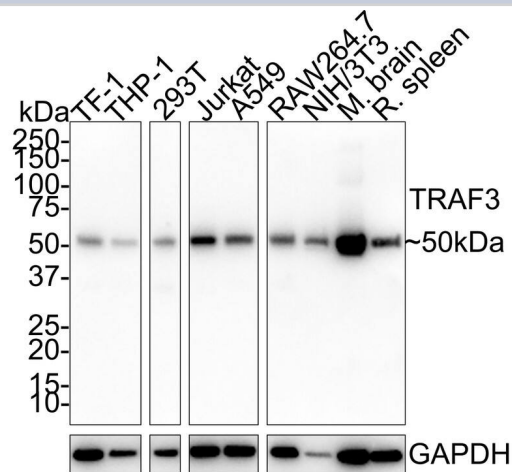
Lysates/proteins at 10 ug/Lane.

Predicted band size: 64 kDa  
 Observed band size: 50 kDa

Exposure time: 1 minute 9 seconds;

4-20% SDS-PAGE gel.

Proteins were transferred to a PVDF membrane and blocked with 5% NFDm/TBST for 1 hour at room temperature. The primary antibody (NBP3-33042) at 1/1,000 dilution was used in 5% NFDm/TBST at room temperature for 2 hours. Goat Anti-Rabbit IgG - HRP Secondary Antibody at 1:50,000 dilution was used for 1 hour at room temperature.





### **Novus Biologicals USA**

10730 E. Briarwood Avenue  
Centennial, CO 80112  
USA  
Phone: 303.730.1950  
Toll Free: 1.888.506.6887  
Fax: 303.730.1966  
nb-customerservice@bio-techne.com

### **Bio-Techne Canada**

21 Canmotor Ave  
Toronto, ON M8Z 4E6  
Canada  
Phone: 905.827.6400  
Toll Free: 855.668.8722  
Fax: 905.827.6402  
canada.inquires@bio-techne.com

### **Bio-Techne Ltd**

19 Barton Lane  
Abingdon Science Park  
Abingdon, OX14 3NB, United Kingdom  
Phone: (44) (0) 1235 529449  
Free Phone: 0800 37 34 15  
Fax: (44) (0) 1235 533420  
info.EMEA@bio-techne.com

### **General Contact Information**

www.novusbio.com  
Technical Support: nb-technical@bio-techne.com  
Orders: nb-customerservice@bio-techne.com  
General: novus@novusbio.com

### **Products Related to NBP3-33042**

---

HAF008	Goat anti-Rabbit IgG Secondary Antibody [HRP]
NB7160	Goat anti-Rabbit IgG (H+L) Secondary Antibody [HRP]
NBP2-24891	Rabbit IgG Isotype Control
NB100-56175PEP	TRAF-3 Antibody Blocking Peptide

---

### **Limitations**

This product is for research use only and is not approved for use in humans or in clinical diagnosis. Primary Antibodies are guaranteed for 1 year from date of receipt.

For more information on our 100% guarantee, please visit [www.novusbio.com/guarantee](http://www.novusbio.com/guarantee)

Earn gift cards/discounts by submitting a review: [www.novusbio.com/reviews/submit/NBP3-33042](http://www.novusbio.com/reviews/submit/NBP3-33042)

Earn gift cards/discounts by submitting a publication using this product:  
[www.novusbio.com/publications](http://www.novusbio.com/publications)

