

Product Datasheet

NKCC2/SLC12A1 Antibody (JE64-26) NBP3-32951

Unit Size: 100 ul

Store at 4C short term. Aliquot and store at -20C long term. Avoid freeze-thaw cycles.

www.novusbio.com



technical@novusbio.com

Protocols, Publications, Related Products, Reviews, Research Tools and Images at:
www.novusbio.com/NBP3-32951

Updated 8/7/2025 v.20.1

Earn rewards for product
reviews and publications.

Submit a publication at www.novusbio.com/publications

Submit a review at www.novusbio.com/reviews/destination/NBP3-32951



NBP3-32951

NKCC2/SLC12A1 Antibody (JE64-26)

Product Information	
Unit Size	100 ul
Concentration	1 mg/ml
Storage	Store at 4C short term. Aliquot and store at -20C long term. Avoid freeze-thaw cycles.
Clonality	Monoclonal
Clone	JE64-26
Preservative	0.05% Sodium Azide
Isotype	IgG
Purity	Protein A purified
Buffer	1*TBS (pH7.4), 0.05% BSA and 40% Glycerol
Target Molecular Weight	121 kDa

Product Description	
Host	Rabbit
Gene ID	6557
Gene Symbol	SLC12A1
Species	Human, Mouse, Rat
Immunogen	Recombinant protein within Human NKCC2/SLC12A1 aa 593-813 / 1,099. (Uniprot: Q13621)

Product Application Details	
Applications	Western Blot, Immunohistochemistry-Paraffin, Immunocytochemistry/Immunofluorescence, Immunohistochemistry
Recommended Dilutions	Western Blot 1:2000, Immunohistochemistry, Immunocytochemistry/Immunofluorescence 1:100, Immunohistochemistry-Paraffin 1:20000



Images

Western Blot: NKCC2/SLC12A1 Antibody (JE64-26) [NBP3-32951] - Western blot analysis of NKCC2/SLC12A1 on different lysates with Rabbit anti-NKCC2/SLC12A1 antibody (NBP3-32951) at 1/1,000 dilution.

Lane 1: mouse kidney tissue lysate (no heat)
 Lane 2: mouse kidney tissue lysate
 Lane 3: rat kidney tissue lysate
 Lane 4: K-562 cell lysate (no heat)

Tissue lysates at 30 ug/Lane.
 Cell lysates at 20 ug/Lane.

Predicted band size: 121 kDa
 Observed band size: 150 kDa

Exposure time: 1 minutes 40 seconds;

4-20% SDS-PAGE gel.

Proteins were transferred to a PVDF membrane and blocked with 5% NFDm/TBST for 1 hour at room temperature. The primary antibody (NBP3-32951) at 1/1,000 dilution was used in 5% NFDm/TBST at room temperature for 2 hours. Goat Anti-Rabbit IgG - HRP Secondary Antibody at 1/50,000 dilution was used for 1 hour at room temperature.

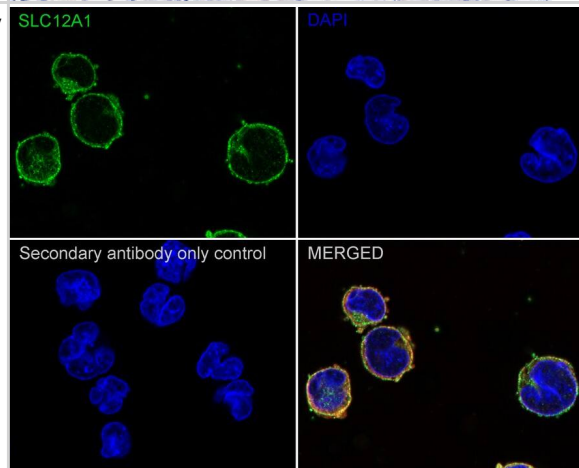
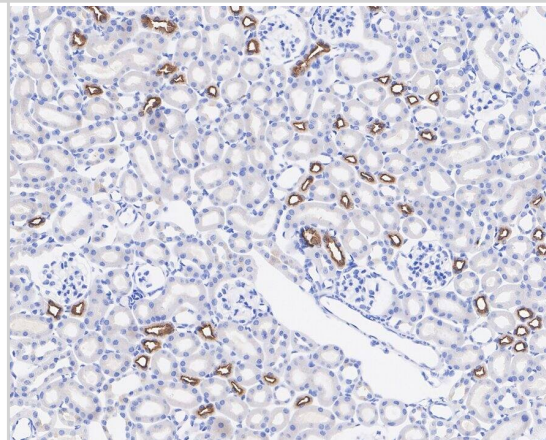
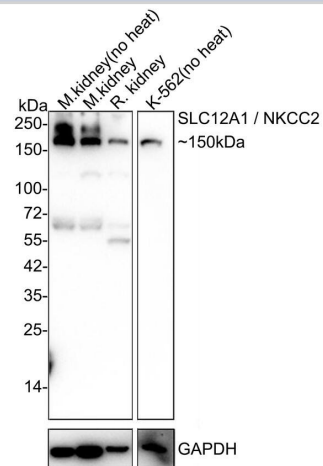
Immunohistochemistry: NKCC2/SLC12A1 Antibody (JE64-26) [NBP3-32951] - Immunohistochemical analysis of paraffin-embedded mouse kidney tissue with Rabbit anti-NKCC2/SLC12A1 antibody (NBP3-32951) at 1/20,000 dilution.

The section was pre-treated using heat mediated antigen retrieval with Tris-EDTA buffer (pH 9.0) for 20 minutes. The tissues were blocked in 1% BSA for 20 minutes at room temperature, washed with ddH₂O and PBS, and then probed with the primary antibody (NBP3-32951) at 1/20,000 dilution for 1 hour at room temperature. The detection was performed using an HRP conjugated compact polymer system. DAB was used as the chromogen. Tissues were counterstained with hematoxylin and mounted with DPX.

Immunocytochemistry/ Immunofluorescence: NKCC2/SLC12A1 Antibody (JE64-26) [NBP3-32951] - Immunocytochemistry analysis of K562 cells labeling NKCC2/SLC12A1 with Rabbit anti-NKCC2/SLC12A1 antibody (NBP3-32951) at 1/100 dilution.

Cells were fixed in 4% paraformaldehyde and 80% methanol for 20 minutes at room temperature, permeabilized with 0.1% Triton X-100 in PBS for 5 minutes at room temperature, then blocked with 1% BSA in 10% negative goat serum for 1 hour at room temperature. Cells were then incubated with Rabbit anti-NKCC2/SLC12A1 antibody (NBP3-32951) at 1/100 dilution in 1% BSA in PBST overnight at 4 °C. Goat Anti-Rabbit IgG H&L (iFluor™ 488) was used as the secondary antibody at 1/1,000 dilution. PBS instead of the primary antibody was used as the secondary antibody only control. Nuclear DNA was labelled in blue with DAPI.

Beta tubulin (red) was stained at 1/100 dilution overnight at +4 °C. Goat Anti-Mouse IgG H&L (iFluor™ 594) was used as the secondary antibody at 1/1,000 dilution.





Novus Biologicals USA

10730 E. Briarwood Avenue
Centennial, CO 80112
USA
Phone: 303.730.1950
Toll Free: 1.888.506.6887
Fax: 303.730.1966
nb-customerservice@bio-techne.com

Bio-Techne Canada

21 Canmotor Ave
Toronto, ON M8Z 4E6
Canada
Phone: 905.827.6400
Toll Free: 855.668.8722
Fax: 905.827.6402
canada.inquires@bio-techne.com

Bio-Techne Ltd

19 Barton Lane
Abingdon Science Park
Abingdon, OX14 3NB, United Kingdom
Phone: (44) (0) 1235 529449
Free Phone: 0800 37 34 15
Fax: (44) (0) 1235 533420
info.EMEA@bio-techne.com

General Contact Information

www.novusbio.com
Technical Support: nb-technical@bio-techne.com
Orders: nb-customerservice@bio-techne.com
General: novus@novusbio.com

Limitations

This product is for research use only and is not approved for use in humans or in clinical diagnosis. Primary Antibodies are guaranteed for 1 year from date of receipt.

For more information on our 100% guarantee, please visit www.novusbio.com/guarantee

Earn gift cards/discounts by submitting a review: www.novusbio.com/reviews/submit/NBP3-32951

Earn gift cards/discounts by submitting a publication using this product:
www.novusbio.com/publications

