

# Product Datasheet

## SLC6A4/5-HTTLPR/Serotonin transporter Antibody (JE34-53) NBP3-32944

Unit Size: 100 ul

Store at 4C short term. Aliquot and store at -20C long term. Avoid freeze-thaw cycles.

[www.novusbio.com](http://www.novusbio.com)



[technical@novusbio.com](mailto:technical@novusbio.com)

Protocols, Publications, Related Products, Reviews, Research Tools and Images at:  
[www.novusbio.com/NBP3-32944](http://www.novusbio.com/NBP3-32944)

Updated 8/7/2025 v.20.1

Earn rewards for product  
reviews and publications.

Submit a publication at [www.novusbio.com/publications](http://www.novusbio.com/publications)

Submit a review at [www.novusbio.com/reviews/destination/NBP3-32944](http://www.novusbio.com/reviews/destination/NBP3-32944)



**NBP3-32944****SLC6A4/5-HTTLPR/Serotonin transporter Antibody (JE34-53)**

<b>Product Information</b>	
<b>Unit Size</b>	100 ul
<b>Concentration</b>	1 mg/ml
<b>Storage</b>	Store at 4C short term. Aliquot and store at -20C long term. Avoid freeze-thaw cycles.
<b>Clonality</b>	Monoclonal
<b>Clone</b>	JE34-53
<b>Preservative</b>	0.05% Sodium Azide
<b>Isotype</b>	IgG
<b>Purity</b>	Protein A purified
<b>Buffer</b>	1*TBS (pH7.4), 0.05% BSA and 40% Glycerol
<b>Target Molecular Weight</b>	70 kDa

<b>Product Description</b>	
<b>Host</b>	Rabbit
<b>Gene ID</b>	6532
<b>Gene Symbol</b>	SLC6A4
<b>Species</b>	Human, Mouse, Rat
<b>Immunogen</b>	Synthetic peptide within Human SLC6A4/5-HTTLPR/Serotonin transporter aa 38-87 / 630. (Uniprot: P31645)

<b>Product Application Details</b>	
<b>Applications</b>	Western Blot, Flow Cytometry
<b>Recommended Dilutions</b>	Western Blot 1:1000, Flow Cytometry 1:500-1:1000



## Images

Western Blot: SLC6A4/5-HTTLPR/Serotonin transporter Antibody (JE34-53) [NBP3-32944] - Western blot analysis of SLC6A4/5-HTTLPR/Serotonin transporter on different lysates with Rabbit anti-SLC6A4/5-HTTLPR/Serotonin transporter antibody (NBP3-32944) at 1/1,000 dilution.

Lane 1: Mouse brain tissue lysate  
Lane 2: Rat brain tissue lysate  
Lane 3: Mouse lung tissue lysate

Lysates/proteins at 30 ug/Lane.

Predicted band size: 70 kDa  
Observed band size: 75 kDa

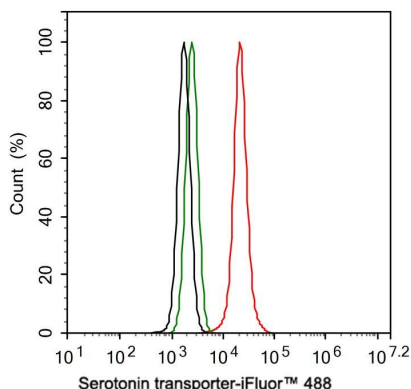
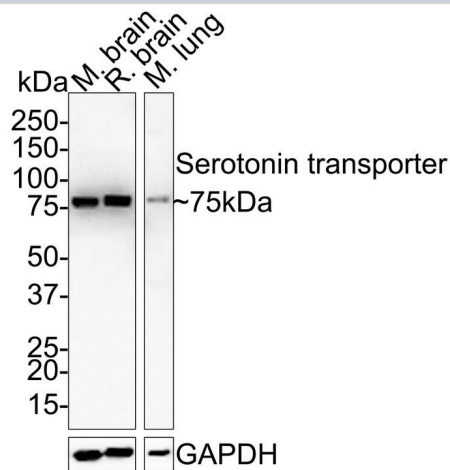
Exposure time: 28 seconds;

4-20% SDS-PAGE gel.

Proteins were transferred to a PVDF membrane and blocked with 5% NFDM/TBST for 1 hour at room temperature. The primary antibody (NBP3-32944) at 1/1,000 dilution was used in 5% NFDM/TBST at room temperature for 2 hours. Goat Anti-Rabbit IgG - HRP Secondary Antibody at 1:100,000 dilution was used for 1 hour at room temperature.

Flow Cytometry: SLC6A4/5-HTTLPR/Serotonin transporter Antibody (JE34-53) [NBP3-32944] - Flow cytometric analysis of HepG2 cells labeling SLC6A4/5-HTTLPR/Serotonin transporter.

Cells were fixed and permeabilized. Then stained with the primary antibody (NBP3-32944, 1ug/ml) (red) compared with Rabbit IgG Isotype Control (green). After incubation of the primary antibody at +4°C for an hour, the cells were stained with a iFluor™ 488 conjugate-Goat anti-Rabbit IgG Secondary antibody at 1/1,000 dilution for 30 minutes at +4°C. Unlabelled sample was used as a control (cells without incubation with primary antibody; black).





### **Novus Biologicals USA**

10730 E. Briarwood Avenue  
Centennial, CO 80112  
USA  
Phone: 303.730.1950  
Toll Free: 1.888.506.6887  
Fax: 303.730.1966  
nb-customerservice@bio-techne.com

### **Bio-Techne Canada**

21 Canmotor Ave  
Toronto, ON M8Z 4E6  
Canada  
Phone: 905.827.6400  
Toll Free: 855.668.8722  
Fax: 905.827.6402  
canada.inquires@bio-techne.com

### **Bio-Techne Ltd**

19 Barton Lane  
Abingdon Science Park  
Abingdon, OX14 3NB, United Kingdom  
Phone: (44) (0) 1235 529449  
Free Phone: 0800 37 34 15  
Fax: (44) (0) 1235 533420  
info.EMEA@bio-techne.com

### **General Contact Information**

www.novusbio.com  
Technical Support: nb-technical@bio-techne.com  
Orders: nb-customerservice@bio-techne.com  
General: novus@novusbio.com

### **Products Related to NBP3-32944**

---

HAF008	Goat anti-Rabbit IgG Secondary Antibody [HRP]
NB7160	Goat anti-Rabbit IgG (H+L) Secondary Antibody [HRP]
NBP2-24891	Rabbit IgG Isotype Control
NBP2-57729PEP	SLC6A4/5-HTTLPR/Serotonin transporter Recombinant Protein Antigen

---

### **Limitations**

This product is for research use only and is not approved for use in humans or in clinical diagnosis. Primary Antibodies are guaranteed for 1 year from date of receipt.

For more information on our 100% guarantee, please visit [www.novusbio.com/guarantee](http://www.novusbio.com/guarantee)

Earn gift cards/discounts by submitting a review: [www.novusbio.com/reviews/submit/NBP3-32944](http://www.novusbio.com/reviews/submit/NBP3-32944)

Earn gift cards/discounts by submitting a publication using this product:  
[www.novusbio.com/publications](http://www.novusbio.com/publications)

