

# Product Datasheet

## PSMB10/MECL1 Antibody (PSH01-58) NBP3-32863

Unit Size: 100 ul

Store at 4C short term. Aliquot and store at -20C long term. Avoid freeze-thaw cycles.

[www.novusbio.com](http://www.novusbio.com)



[technical@novusbio.com](mailto:technical@novusbio.com)

Protocols, Publications, Related Products, Reviews, Research Tools and Images at:  
[www.novusbio.com/NBP3-32863](http://www.novusbio.com/NBP3-32863)

Updated 8/7/2025 v.20.1

Earn rewards for product  
reviews and publications.

Submit a publication at [www.novusbio.com/publications](http://www.novusbio.com/publications)

Submit a review at [www.novusbio.com/reviews/destination/NBP3-32863](http://www.novusbio.com/reviews/destination/NBP3-32863)



**NBP3-32863**

PSMB10/MECL1 Antibody (PSH01-58)

Product Information	
Unit Size	100 ul
Concentration	1 mg/ml
Storage	Store at 4C short term. Aliquot and store at -20C long term. Avoid freeze-thaw cycles.
Clonality	Monoclonal
Clone	PSH01-58
Preservative	0.05% Sodium Azide
Isotype	IgG
Purity	Protein A purified
Buffer	PBS (pH7.4), 0.1% BSA and 40% Glycerol
Target Molecular Weight	29 kDa

Product Description	
Host	Rabbit
Gene ID	5699
Gene Symbol	PSMB10
Species	Human, Mouse
Immunogen	Recombinant protein within human PSMB10/MECL1 aa 1-273. (Uniprot: P40306)

Product Application Details	
Applications	Western Blot, Immunohistochemistry-Paraffin, Immunohistochemistry
Recommended Dilutions	Western Blot 1:1000, Immunohistochemistry, Immunohistochemistry-Paraffin 1:1000



## Images

Western Blot: PSMB10/MECL1 Antibody (PSH01-58) [NBP3-32863] - Western blot analysis of PSMB10/MECL1 on different lysates with Rabbit anti-PSMB10/MECL1 antibody (NBP3-32863) at 1/1,000 dilution.

Lane 1: HeLa treated with 100ng/mL IFN- for 48 hours cell lysate (20 ug/Lane)

Lane 2: HeLa cell lysate (20 ug/Lane)

Lane 3: Daudi cell lysate (20 ug/Lane)

Lane 4: Raji cell lysate (20 ug/Lane)

Lane 5: THP-1 cell lysate (20 ug/Lane)

Lane 6: Ramos cell lysate (20 ug/Lane)

Lane 7: U-937 cell lysate (20 ug/Lane)

Lane 8: HL-60 cell lysate (20 ug/Lane)

Lane 9: Jurkat cell lysate (20 ug/Lane)

Lane 10: SiHa cell lysate (20 ug/Lane)

Lane 11: Mouse spleen tissue lysate (40 ug/Lane)

Lane 12: Mouse thymus tissue lysate (40 ug/Lane)

Predicted band size: 29 kDa

Observed band size: 25/29 kDa

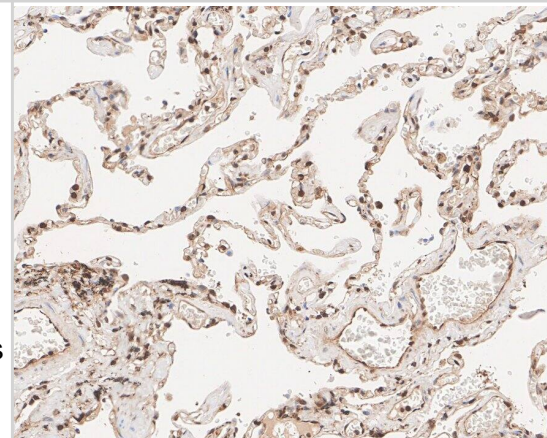
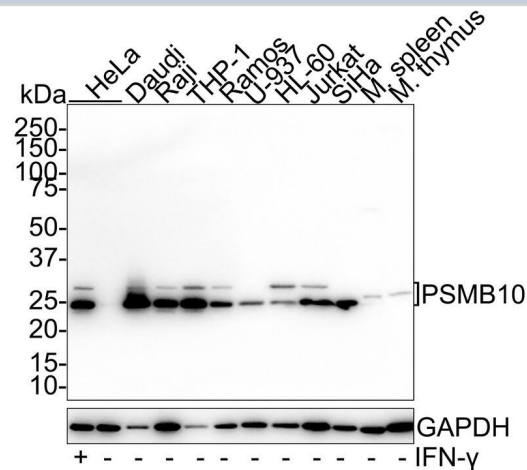
Exposure time: 43 seconds;

4-20% SDS-PAGE gel.

Proteins were transferred to a PVDF membrane and blocked with 5% NFDM/TBST for 1 hour at room temperature. The primary antibody (NBP3-32863) at 1/1,000 dilution was used in 5% NFDM/TBST at room temperature for 2 hours. Goat Anti-Rabbit IgG - HRP Secondary Antibody at 1/50,000 dilution was used for 1 hour at room temperature.

Immunohistochemistry: PSMB10/MECL1 Antibody (PSH01-58) [NBP3-32863] - Immunohistochemical analysis of paraffin-embedded human lung tissue with Rabbit anti-PSMB10/MECL1 antibody (NBP3-32863) at 1/1,000 dilution.

The section was pre-treated using heat mediated antigen retrieval with Tris-EDTA buffer (pH 9.0) for 20 minutes. The tissues were blocked in 1% BSA for 20 minutes at room temperature, washed with ddH<sub>2</sub>O and PBS, and then probed with the primary antibody (NBP3-32863) at 1/1,000 dilution for 1 hour at room temperature. The detection was performed using an HRP conjugated compact polymer system. DAB was used as the chromogen. Tissues were counterstained with hematoxylin and mounted with DPX.





### **Novus Biologicals USA**

10730 E. Briarwood Avenue  
Centennial, CO 80112  
USA  
Phone: 303.730.1950  
Toll Free: 1.888.506.6887  
Fax: 303.730.1966  
nb-customerservice@bio-techne.com

### **Bio-Techne Canada**

21 Canmotor Ave  
Toronto, ON M8Z 4E6  
Canada  
Phone: 905.827.6400  
Toll Free: 855.668.8722  
Fax: 905.827.6402  
canada.inquires@bio-techne.com

### **Bio-Techne Ltd**

19 Barton Lane  
Abingdon Science Park  
Abingdon, OX14 3NB, United Kingdom  
Phone: (44) (0) 1235 529449  
Free Phone: 0800 37 34 15  
Fax: (44) (0) 1235 533420  
info.EMEA@bio-techne.com

### **General Contact Information**

www.novusbio.com  
Technical Support: nb-technical@bio-techne.com  
Orders: nb-customerservice@bio-techne.com  
General: novus@novusbio.com

### **Products Related to NBP3-32863**

---

HAF008	Goat anti-Rabbit IgG Secondary Antibody [HRP]
NB7160	Goat anti-Rabbit IgG (H+L) Secondary Antibody [HRP]
NBP2-24891	Rabbit IgG Isotype Control
NBP1-72454-10ug	Recombinant Human PSMB10/MECL1 His Protein

---

### **Limitations**

This product is for research use only and is not approved for use in humans or in clinical diagnosis. Primary Antibodies are guaranteed for 1 year from date of receipt.

For more information on our 100% guarantee, please visit [www.novusbio.com/guarantee](http://www.novusbio.com/guarantee)

Earn gift cards/discounts by submitting a review: [www.novusbio.com/reviews/submit/NBP3-32863](http://www.novusbio.com/reviews/submit/NBP3-32863)

Earn gift cards/discounts by submitting a publication using this product:  
[www.novusbio.com/publications](http://www.novusbio.com/publications)

