

# Product Datasheet

## PSMA/FOLH1/NAALADase I Antibody (JE42-45) NBP3-32861

Unit Size: 100 ul

Store at 4C short term. Aliquot and store at -20C long term. Avoid freeze-thaw cycles.

[www.novusbio.com](http://www.novusbio.com)



[technical@novusbio.com](mailto:technical@novusbio.com)

Protocols, Publications, Related Products, Reviews, Research Tools and Images at:  
[www.novusbio.com/NBP3-32861](http://www.novusbio.com/NBP3-32861)

Updated 8/7/2025 v.20.1

Earn rewards for product  
reviews and publications.

Submit a publication at [www.novusbio.com/publications](http://www.novusbio.com/publications)

Submit a review at [www.novusbio.com/reviews/destination/NBP3-32861](http://www.novusbio.com/reviews/destination/NBP3-32861)



**NBP3-32861****PSMA/FOLH1/NAALADase I Antibody (JE42-45)**

<b>Product Information</b>	
<b>Unit Size</b>	100 ul
<b>Concentration</b>	1 mg/ml
<b>Storage</b>	Store at 4C short term. Aliquot and store at -20C long term. Avoid freeze-thaw cycles.
<b>Clonality</b>	Monoclonal
<b>Clone</b>	JE42-45
<b>Preservative</b>	0.05% Sodium Azide
<b>Isotype</b>	IgG
<b>Purity</b>	Protein A purified
<b>Buffer</b>	1*TBS (pH7.4), 0.05% BSA and 40% Glycerol
<b>Target Molecular Weight</b>	84 kDa

<b>Product Description</b>	
<b>Host</b>	Rabbit
<b>Gene ID</b>	2346
<b>Gene Symbol</b>	FOLH1
<b>Species</b>	Human
<b>Immunogen</b>	Recombinant protein within Human PSMA/FOLH1/NAALADase I aa 1-150 / 750. (Uniprot: Q04609)

<b>Product Application Details</b>	
<b>Applications</b>	Western Blot, Immunohistochemistry-Paraffin, Immunohistochemistry
<b>Recommended Dilutions</b>	Western Blot 1:1000, Immunohistochemistry, Immunohistochemistry-Paraffin 1:1000



## Images

Western Blot: PSMA/FOLH1/NAALADase I Antibody (JE42-45) [NBP3-32861] - Western blot analysis of PSMA/FOLH1/NAALADase I on different lysates with Rabbit anti-PSMA/FOLH1/NAALADase I antibody (NBP3-32861) at 1/1,000 dilution.

Lane 1: LNCaP cell lysate

Lane 2: 22RV1 cell lysate

Lane 3: PC-3M cell lysate (negative)

Lysates/proteins at 20 ug/Lane.

Predicted band size: 84 kDa

Observed band size: 100/200 kDa

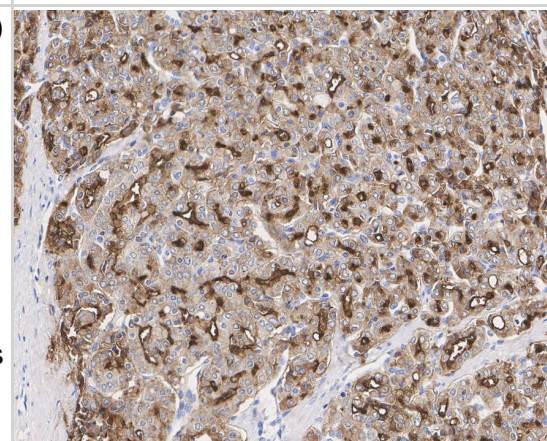
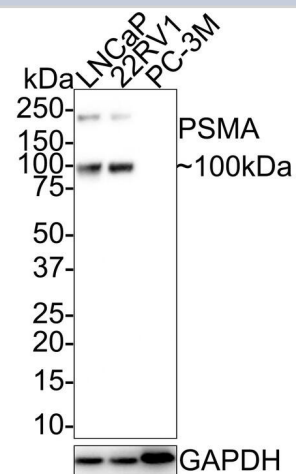
Exposure time: 1 minute 20 seconds;

4-20% SDS-PAGE gel.

Proteins were transferred to a PVDF membrane and blocked with 5% NFDM/TBST for 1 hour at room temperature. The primary antibody (NBP3-32861) at 1/1,000 dilution was used in 5% NFDM/TBST at room temperature for 2 hours. Goat Anti-Rabbit IgG - HRP Secondary Antibody at 1:100,000 dilution was used for 1 hour at room temperature.

Immunohistochemistry: PSMA/FOLH1/NAALADase I Antibody (JE42-45) [NBP3-32861] - Immunohistochemical analysis of paraffin-embedded human prostate carcinoma tissue with Rabbit anti-PSMA/FOLH1/NAALADase I antibody (NBP3-32861) at 1/1,000 dilution.

The section was pre-treated using heat mediated antigen retrieval with Tris-EDTA buffer (pH 9.0) for 20 minutes. The tissues were blocked in 1% BSA for 20 minutes at room temperature, washed with ddH<sub>2</sub>O and PBS, and then probed with the primary antibody (NBP3-32861) at 1/1,000 dilution for 1 hour at room temperature. The detection was performed using an HRP conjugated compact polymer system. DAB was used as the chromogen. Tissues were counterstained with hematoxylin and mounted with DPX.





### **Novus Biologicals USA**

10730 E. Briarwood Avenue  
Centennial, CO 80112  
USA  
Phone: 303.730.1950  
Toll Free: 1.888.506.6887  
Fax: 303.730.1966  
nb-customerservice@bio-techne.com

### **Bio-Techne Canada**

21 Canmotor Ave  
Toronto, ON M8Z 4E6  
Canada  
Phone: 905.827.6400  
Toll Free: 855.668.8722  
Fax: 905.827.6402  
canada.inquires@bio-techne.com

### **Bio-Techne Ltd**

19 Barton Lane  
Abingdon Science Park  
Abingdon, OX14 3NB, United Kingdom  
Phone: (44) (0) 1235 529449  
Free Phone: 0800 37 34 15  
Fax: (44) (0) 1235 533420  
info.EMEA@bio-techne.com

### **General Contact Information**

[www.novusbio.com](http://www.novusbio.com)  
Technical Support: nb-technical@bio-techne.com  
Orders: nb-customerservice@bio-techne.com  
General: novus@novusbio.com

### **Products Related to NBP3-32861**

---

HAF008	Goat anti-Rabbit IgG Secondary Antibody [HRP]
NB7160	Goat anti-Rabbit IgG (H+L) Secondary Antibody [HRP]
NBP2-24891	Rabbit IgG Isotype Control
NBP3-12866-10ug	Recombinant Human PSMA/FOLH1/NAALADase I His Protein

---

### **Limitations**

This product is for research use only and is not approved for use in humans or in clinical diagnosis. Primary Antibodies are guaranteed for 1 year from date of receipt.

For more information on our 100% guarantee, please visit [www.novusbio.com/guarantee](http://www.novusbio.com/guarantee)

Earn gift cards/discounts by submitting a review: [www.novusbio.com/reviews/submit/NBP3-32861](http://www.novusbio.com/reviews/submit/NBP3-32861)

Earn gift cards/discounts by submitting a publication using this product:  
[www.novusbio.com/publications](http://www.novusbio.com/publications)

