

Product Datasheet

PLK1 Antibody (PSH04-35)

NBP3-32829

Unit Size: 100 ul

Store at 4C short term. Aliquot and store at -20C long term. Avoid freeze-thaw cycles.

www.novusbio.com



technical@novusbio.com

Protocols, Publications, Related Products, Reviews, Research Tools and Images at:
www.novusbio.com/NBP3-32829

Updated 8/7/2025 v.20.1

Earn rewards for product
reviews and publications.

Submit a publication at www.novusbio.com/publications

Submit a review at www.novusbio.com/reviews/destination/NBP3-32829



NBP3-32829

PLK1 Antibody (PSH04-35)

Product Information	
Unit Size	100 ul
Concentration	1 mg/ml
Storage	Store at 4C short term. Aliquot and store at -20C long term. Avoid freeze-thaw cycles.
Clonality	Monoclonal
Clone	PSH04-35
Preservative	0.05% Sodium Azide
Isotype	IgG
Purity	Protein A purified
Buffer	PBS (pH7.4), 0.1% BSA and 40% Glycerol
Target Molecular Weight	68 kDa
Product Description	
Host	Rabbit
Gene ID	5347
Gene Symbol	PLK1
Species	Human, Mouse, Rat, Monkey
Immunogen	Recombinant protein within human PLK1 aa 314-603 / 603. (Uniprot: P53350)
Product Application Details	
Applications	Western Blot, Immunohistochemistry-Paraffin, Immunocytochemistry/Immunofluorescence, Immunohistochemistry
Recommended Dilutions	Western Blot 1:1000, Immunohistochemistry, Immunocytochemistry/Immunofluorescence 1:100, Immunohistochemistry-Paraffin 1:200



Images

Western Blot: PLK1 Antibody (PSH04-35) [NBP3-32829] - Western blot analysis of PLK1 on different lysates with Rabbit anti-PLK1 antibody (NBP3-32829) at 1/1,000 dilution.

Lane 1: HeLa cell lysate (20 ug/Lane)
 Lane 2: K-562 cell lysate (20 ug/Lane)
 Lane 3: HEK-293 cell lysate (20 ug/Lane)
 Lane 4: Raji cell lysate (20 ug/Lane)
 Lane 5: HT-29 cell lysate (20 ug/Lane)
 Lane 6: HCT 116 cell lysate (20 ug/Lane)
 Lane 7: COS-1 cell lysate (20 ug/Lane)
 Lane 8: RAW264.7 cell lysate (20 ug/Lane)
 Lane 9: C6 cell lysate (20 ug/Lane)
 Lane 10: Mouse testis tissue lysate (40 ug/Lane)
 Lane 11: Rat testis tissue lysate (40 ug/Lane)

Predicted band size: 68 kDa
 Observed band size: 68 kDa

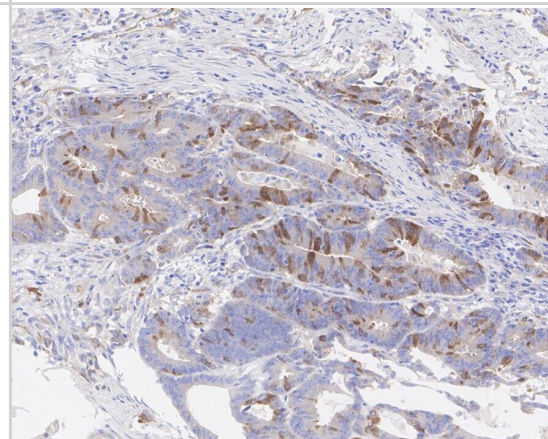
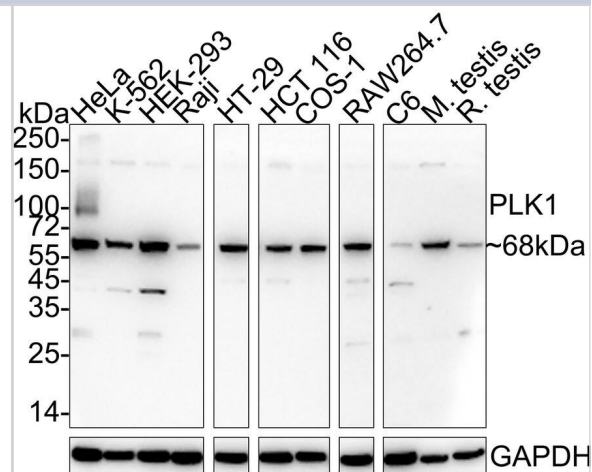
Exposure time: 1 minute; ECL;

4-20% SDS-PAGE gel.

Proteins were transferred to a PVDF membrane and blocked with 5% NFDM/TBST for 1 hour at room temperature. The primary antibody (NBP3-32829) at 1/1,000 dilution was used in 5% NFDM/TBST at 4C overnight. Goat Anti-Rabbit IgG - HRP Secondary Antibody at 1/50,000 dilution was used for 1 hour at room temperature.

Immunohistochemistry: PLK1 Antibody (PSH04-35) [NBP3-32829] - Immunohistochemical analysis of paraffin-embedded human colon cancer tissue with Rabbit anti-PLK1 antibody (NBP3-32829) at 1/200 dilution.

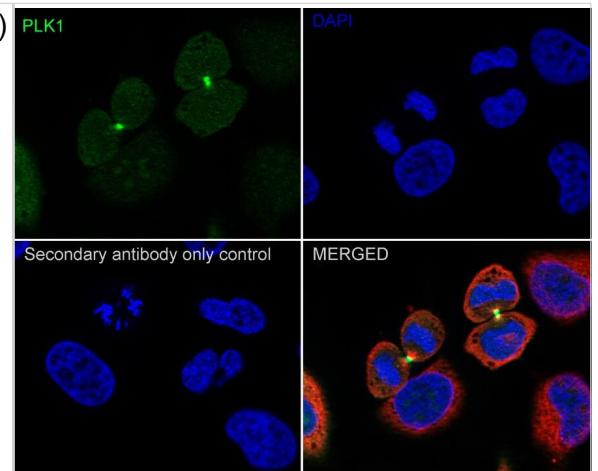
The section was pre-treated using heat mediated antigen retrieval with sodium citrate buffer (pH 6.0) for 2 minutes. The tissues were blocked in 1% BSA for 20 minutes at room temperature, washed with ddH₂O and PBS, and then probed with the primary antibody (NBP3-32829) at 1/200 dilution for 1 hour at room temperature. The detection was performed using an HRP conjugated compact polymer system. DAB was used as the chromogen. Tissues were counterstained with hematoxylin and mounted with DPX.



Immunocytochemistry/ Immunofluorescence: PLK1 Antibody (PSH04-35) [NBP3-32829] - Immunocytochemistry analysis of HeLa cells labeling PLK1 with Rabbit anti-PLK1 antibody (NBP3-32829) at 1/100 dilution.

Cells were fixed in 4% paraformaldehyde for 20 minutes at room temperature, permeabilized with 0.1% Triton X-100 in PBS for 5 minutes at room temperature, then blocked with 1% BSA in 10% negative goat serum for 1 hour at room temperature. Cells were then incubated with Rabbit anti-PLK1 antibody (NBP3-32829) at 1/100 dilution in 1% BSA in PBST overnight at 4 °C. Goat Anti-Rabbit IgG H&L (iFluor™ 488) was used as the secondary antibody at 1/1,000 dilution. PBS instead of the primary antibody was used as the secondary antibody only control. Nuclear DNA was labelled in blue with DAPI.

Beta tubulin (red) was stained at 1/100 dilution overnight at +4 °C. Goat Anti-Mouse IgG H&L (iFluor™ 594) was used as the secondary antibody at 1/1,000 dilution.





Novus Biologicals USA

10730 E. Briarwood Avenue
Centennial, CO 80112
USA

Phone: 303.730.1950

Toll Free: 1.888.506.6887

Fax: 303.730.1966

nb-customerservice@bio-techne.com

Bio-Techne Canada

21 Canmotor Ave
Toronto, ON M8Z 4E6
Canada

Phone: 905.827.6400

Toll Free: 855.668.8722

Fax: 905.827.6402

canada.inquires@bio-techne.com

Bio-Techne Ltd

19 Barton Lane
Abingdon Science Park
Abingdon, OX14 3NB, United Kingdom

Phone: (44) (0) 1235 529449

Free Phone: 0800 37 34 15

Fax: (44) (0) 1235 533420

info.EMEA@bio-techne.com

General Contact Information

www.novusbio.com

Technical Support: nb-technical@bio-techne.com

Orders: nb-customerservice@bio-techne.com

General: novus@novusbio.com

Limitations

This product is for research use only and is not approved for use in humans or in clinical diagnosis. Primary Antibodies are guaranteed for 1 year from date of receipt.

For more information on our 100% guarantee, please visit www.novusbio.com/guarantee

Earn gift cards/discounts by submitting a review: www.novusbio.com/reviews/submit/NBP3-32829

Earn gift cards/discounts by submitting a publication using this product:
www.novusbio.com/publications

