

# Product Datasheet

## Pyruvate Carboxylase Antibody (PSH01-55) NBP3-32722

Unit Size: 100 ul

Store at 4C short term. Aliquot and store at -20C long term. Avoid freeze-thaw cycles.

[www.novusbio.com](http://www.novusbio.com)



[technical@novusbio.com](mailto:technical@novusbio.com)

Protocols, Publications, Related Products, Reviews, Research Tools and Images at:  
[www.novusbio.com/NBP3-32722](http://www.novusbio.com/NBP3-32722)

Updated 8/7/2025 v.20.1

Earn rewards for product  
reviews and publications.

Submit a publication at [www.novusbio.com/publications](http://www.novusbio.com/publications)

Submit a review at [www.novusbio.com/reviews/destination/NBP3-32722](http://www.novusbio.com/reviews/destination/NBP3-32722)



**NBP3-32722****Pyruvate Carboxylase Antibody (PSH01-55)**

Product Information	
Unit Size	100 ul
Concentration	1 mg/ml
Storage	Store at 4C short term. Aliquot and store at -20C long term. Avoid freeze-thaw cycles.
Clonality	Monoclonal
Clone	PSH01-55
Preservative	0.05% Sodium Azide
Isotype	IgG
Purity	Protein A purified
Buffer	PBS (pH7.4), 0.05% BSA and 40% Glycerol
Target Molecular Weight	130 kDa

Product Description	
Host	Rabbit
Gene ID	5091
Gene Symbol	PC
Species	Human, Mouse, Rat
Immunogen	Recombinant protein within Human Pyruvate Carboxylase aa 450-1178. (Uniprot: P11498)

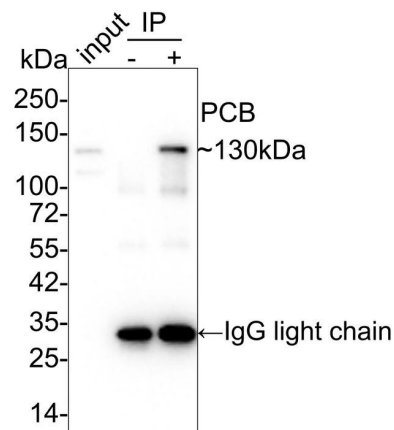
Product Application Details	
Applications	Western Blot, Immunohistochemistry-Paraffin, Flow Cytometry, Immunocytochemistry/ Immunofluorescence, Immunohistochemistry, Immunoprecipitation
Recommended Dilutions	Western Blot 1:1000, Flow Cytometry 1:1000, Immunohistochemistry, Immunocytochemistry/ Immunofluorescence 1:250, Immunoprecipitation 1-2ug/sample, Immunohistochemistry-Paraffin 1:200

**Images**

Immunoprecipitation: Pyruvate Carboxylase Antibody (PSH01-55) [NBP3-32722] - Pyruvate Carboxylase was immunoprecipitated in 0.2mg HeLa cell lysate with NBP3-32722 at 2 ug/25 ul agarose. Western blot was performed from the immunoprecipitate using NBP3-32722 at 1/1,000 dilution. Anti-Rabbit IgG for IP Nano-secondary antibody at 1/5,000 dilution was used for 1 hour at room temperature.

Lane 1: HeLa cell lysate (input)  
 Lane 2: Rabbit IgG instead of NBP3-32722 in HeLa cell lysate  
 Lane 3: NBP3-32722 IP in HeLa cell lysate

Blocking/Dilution buffer: 5% NFDM/TBST  
 Exposure time: 24 seconds



**Western Blot: Pyruvate Carboxylase Antibody (PSH01-55) [NBP3-32722]** - Western blot analysis of Pyruvate Carboxylase on different lysates with Rabbit anti-Pyruvate Carboxylase antibody (NBP3-32722) at 1/1,000 dilution.

Lane 1: HepG2 cell lysate  
 Lane 2: MCF7 cell lysate  
 Lane 3: A549 cell lysate  
 Lane 4: Huh7 cell lysate  
 Lane 5: Hela cell lysate  
 Lane 6: NIH/3T3 cell lysate  
 Lane 7: Rat brain tissue lysate

Lysates/proteins at 30 ug/Lane.

Predicted band size: 130 kDa  
 Observed band size: 130 kDa

Exposure time: 24 seconds;

4-20% SDS-PAGE gel.

Proteins were transferred to a PVDF membrane and blocked with 5% NFDm/TBST for 1 hour at room temperature. The primary antibody (NBP3-32722) at 1/1,000 dilution was used in 5% NFDm/TBST at room temperature for 2 hours. Goat Anti-Rabbit IgG - HRP Secondary Antibody at 1/50,000 dilution was used for 1 hour at room temperature.

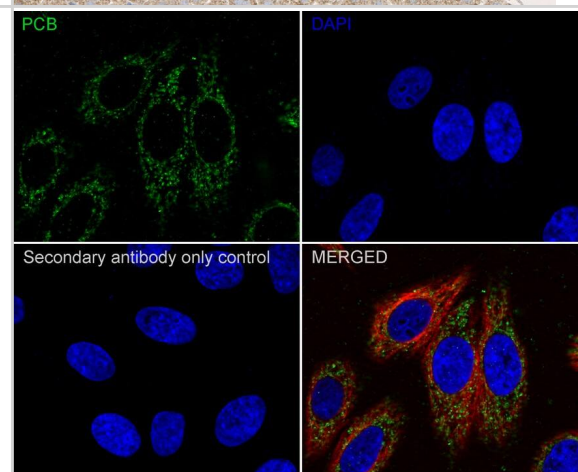
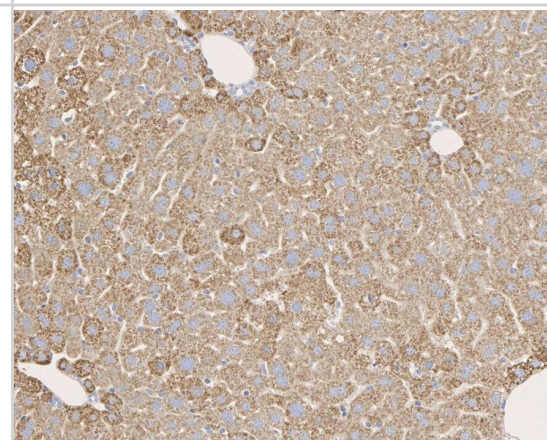
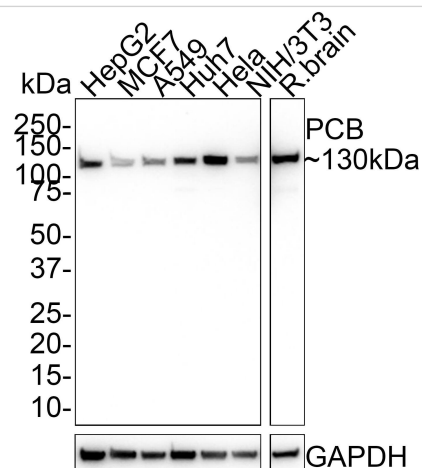
**Immunohistochemistry: Pyruvate Carboxylase Antibody (PSH01-55) [NBP3-32722]** - Immunohistochemical analysis of paraffin-embedded mouse liver tissue with Rabbit anti-Pyruvate Carboxylase antibody (NBP3-32722) at 1/200 dilution.

The section was pre-treated using heat mediated antigen retrieval with Tris-EDTA buffer (pH 9.0) for 20 minutes. The tissues were blocked in 1% BSA for 20 minutes at room temperature, washed with ddH<sub>2</sub>O and PBS, and then probed with the primary antibody (NBP3-32722) at 1/200 dilution for 1 hour at room temperature. The detection was performed using an HRP conjugated compact polymer system. DAB was used as the chromogen. Tissues were counterstained with hematoxylin and mounted with DPX.

**Immunocytochemistry/ Immunofluorescence: Pyruvate Carboxylase Antibody (PSH01-55) [NBP3-32722]** - Immunocytochemistry analysis of HepG2 cells labeling Pyruvate Carboxylase with Rabbit anti-Pyruvate Carboxylase antibody (NBP3-32722) at 1/100 dilution.

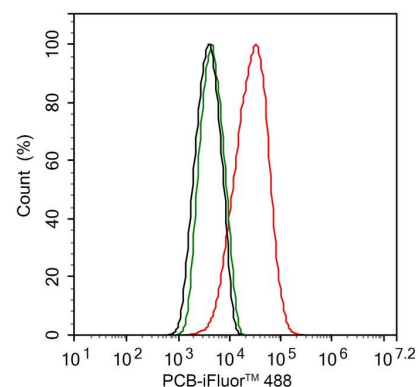
Cells were fixed in 4% paraformaldehyde for 20 minutes at room temperature, permeabilized with 0.1% Triton X-100 in PBS for 5 minutes at room temperature, then blocked with 1% BSA in 10% negative goat serum for 1 hour at room temperature. Cells were then incubated with Rabbit anti-Pyruvate Carboxylase antibody (NBP3-32722) at 1/100 dilution in 1% BSA in PBST overnight at 4 °C. Goat Anti-Rabbit IgG H&L (iFluor™ 488) was used as the secondary antibody at 1/1,000 dilution. PBS instead of the primary antibody was used as the secondary antibody only control. Nuclear DNA was labelled in blue with DAPI.

Beta tubulin (red) was stained at 1/100 dilution overnight at +4 °C. Goat Anti-Mouse IgG H&L (iFluor™ 594) was used as the secondary antibody at 1/1,000 dilution.



Flow Cytometry: Pyruvate Carboxylase Antibody (PSH01-55) [NBP3-32722] - Flow cytometric analysis of PC-12 cells labeling Pyruvate Carboxylase.

Cells were fixed and permeabilized. Then stained with the primary antibody (NBP3-32722, 1/1,000) (red) compared with Rabbit IgG Isotype Control (green). After incubation of the primary antibody at +4°C for an hour, the cells were stained with a iFluor™ 488 conjugate-Goat anti-Rabbit IgG Secondary antibody at 1/1,000 dilution for 30 minutes at +4°C. Unlabelled sample was used as a control (cells without incubation with primary antibody; black).





### **Novus Biologicals USA**

10730 E. Briarwood Avenue  
Centennial, CO 80112  
USA  
Phone: 303.730.1950  
Toll Free: 1.888.506.6887  
Fax: 303.730.1966  
nb-customerservice@bio-techne.com

### **Bio-Techne Canada**

21 Canmotor Ave  
Toronto, ON M8Z 4E6  
Canada  
Phone: 905.827.6400  
Toll Free: 855.668.8722  
Fax: 905.827.6402  
canada.inquires@bio-techne.com

### **Bio-Techne Ltd**

19 Barton Lane  
Abingdon Science Park  
Abingdon, OX14 3NB, United Kingdom  
Phone: (44) (0) 1235 529449  
Free Phone: 0800 37 34 15  
Fax: (44) (0) 1235 533420  
info.EMEA@bio-techne.com

### **General Contact Information**

www.novusbio.com  
Technical Support: nb-technical@bio-techne.com  
Orders: nb-customerservice@bio-techne.com  
General: novus@novusbio.com

### **Products Related to NBP3-32722**

---

HAF008	Goat anti-Rabbit IgG Secondary Antibody [HRP]
NB7160	Goat anti-Rabbit IgG (H+L) Secondary Antibody [HRP]
NBP2-24891	Rabbit IgG Isotype Control
NBP2-33407PEP	Pyruvate Carboxylase Recombinant Protein Antigen

---

### **Limitations**

This product is for research use only and is not approved for use in humans or in clinical diagnosis. Primary Antibodies are guaranteed for 1 year from date of receipt.

For more information on our 100% guarantee, please visit [www.novusbio.com/guarantee](http://www.novusbio.com/guarantee)

Earn gift cards/discounts by submitting a review: [www.novusbio.com/reviews/submit/NBP3-32722](http://www.novusbio.com/reviews/submit/NBP3-32722)

Earn gift cards/discounts by submitting a publication using this product:  
[www.novusbio.com/publications](http://www.novusbio.com/publications)

