

Product Datasheet

MCM2 Antibody (JE42-39) NBP3-32577

Unit Size: 100 ul

Store at 4C short term. Aliquot and store at -20C long term. Avoid freeze-thaw cycles.

www.novusbio.com



technical@novusbio.com

Protocols, Publications, Related Products, Reviews, Research Tools and Images at:
www.novusbio.com/NBP3-32577

Updated 8/7/2025 v.20.1

Earn rewards for product
reviews and publications.

Submit a publication at www.novusbio.com/publications

Submit a review at www.novusbio.com/reviews/destination/NBP3-32577



NBP3-32577

MCM2 Antibody (JE42-39)

Product Information	
Unit Size	100 ul
Concentration	1 mg/ml
Storage	Store at 4C short term. Aliquot and store at -20C long term. Avoid freeze-thaw cycles.
Clonality	Monoclonal
Clone	JE42-39
Preservative	0.05% Sodium Azide
Isotype	IgG
Purity	Protein A purified
Buffer	1*TBS (pH7.4), 0.05% BSA and 40% Glycerol
Target Molecular Weight	102 kDa
Product Description	
Host	Rabbit
Gene ID	4171
Gene Symbol	MCM2
Species	Human, Mouse
Immunogen	Synthetic peptide within Human MCM2 aa 31-80 / 904. (Uniprot: P49736)
Product Application Details	
Applications	Western Blot, Immunohistochemistry-Paraffin, Immunocytochemistry/Immunofluorescence, Immunohistochemistry
Recommended Dilutions	Western Blot 1:1000, Immunohistochemistry, Immunocytochemistry/Immunofluorescence 1:250, Immunohistochemistry-Paraffin 1:1000



Images

Western Blot: MCM2 Antibody (JE42-39) [NBP3-32577] - Western blot analysis of MCM2 on different lysates with Rabbit anti-MCM2 antibody (NBP3-32577) at 1/1,000 dilution.

Lane 1: SW480 cell lysate (20 ug/Lane)
 Lane 2: SH-SY5Y cell lysate (20 ug/Lane)
 Lane 3: Raji cell lysate (20 ug/Lane)
 Lane 4: HeLa cell lysate (20 ug/Lane)
 Lane 5: HL-60 cell lysate (20 ug/Lane)
 Lane 6: Mouse thymus tissue lysate (40 ug/Lane)
 Lane 7: Jurkat cell lysate (20 ug/Lane)
 Lane 8: C2C12 cell lysate (20 ug/Lane)
 Lane 9: U-87 MG cell lysate (20 ug/Lane)

Predicted band size: 102 kDa
 Observed band size: 130 kDa

Exposure time: 40 seconds;

4-20% SDS-PAGE gel.

Proteins were transferred to a PVDF membrane and blocked with 5% NFDM/TBST for 1 hour at room temperature. The primary antibody (NBP3-32577) at 1/1,000 dilution was used in 5% NFDM/TBST at room temperature for 2 hours. Goat Anti-Rabbit IgG - HRP Secondary Antibody at 1:100,000 dilution was used for 1 hour at room temperature.

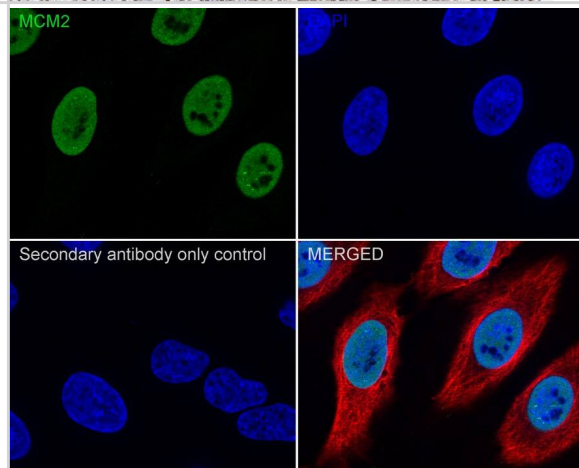
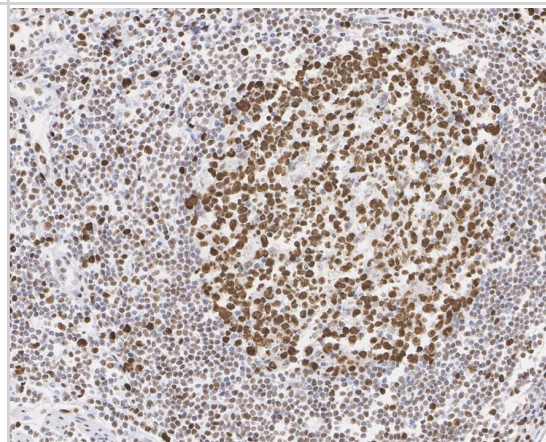
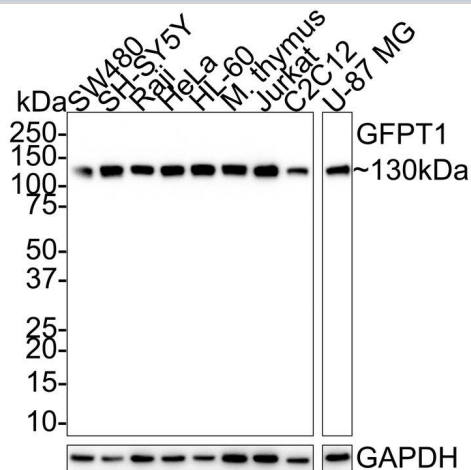
Immunohistochemistry: MCM2 Antibody (JE42-39) [NBP3-32577] - Immunohistochemical analysis of paraffin-embedded human lymph nodes tissue with Rabbit anti-MCM2 antibody (NBP3-32577) at 1/1,000 dilution.

The section was pre-treated using heat mediated antigen retrieval with sodium citrate buffer (pH 6.0) for 2 minutes. The tissues were blocked in 1% BSA for 20 minutes at room temperature, washed with ddH₂O and PBS, and then probed with the primary antibody (NBP3-32577) at 1/1,000 dilution for 1 hour at room temperature. The detection was performed using an HRP conjugated compact polymer system. DAB was used as the chromogen. Tissues were counterstained with hematoxylin and mounted with DPX.

Immunocytochemistry/ Immunofluorescence: MCM2 Antibody (JE42-39) [NBP3-32577] - Immunocytochemistry analysis of HeLa cells labeling MCM2 with Rabbit anti-MCM2 antibody (NBP3-32577) at 1/250 dilution.

Cells were fixed in 100% precooled methanol for 5 minutes at room temperature, then blocked with 1% BSA in 10% negative goat serum for 1 hour at room temperature. Cells were then incubated with Rabbit anti-MCM2 antibody (NBP3-32577) at 1/250 dilution in 1% BSA in PBST overnight at 4 °C. Goat Anti-Rabbit IgG H&L (iFluor™ 488) was used as the secondary antibody at 1/1,000 dilution. PBS instead of the primary antibody was used as the secondary antibody only control. Nuclear DNA was labelled in blue with DAPI.

Beta tubulin (red) was stained at 1/100 dilution overnight at +4 °C. Goat Anti-Mouse IgG H&L (iFluor™ 594) was used as the secondary antibody at 1/1,000 dilution.





Novus Biologicals USA

10730 E. Briarwood Avenue
Centennial, CO 80112
USA
Phone: 303.730.1950
Toll Free: 1.888.506.6887
Fax: 303.730.1966
nb-customerservice@bio-techne.com

Bio-Techne Canada

21 Canmotor Ave
Toronto, ON M8Z 4E6
Canada
Phone: 905.827.6400
Toll Free: 855.668.8722
Fax: 905.827.6402
canada.inquires@bio-techne.com

Bio-Techne Ltd

19 Barton Lane
Abingdon Science Park
Abingdon, OX14 3NB, United Kingdom
Phone: (44) (0) 1235 529449
Free Phone: 0800 37 34 15
Fax: (44) (0) 1235 533420
info.EMEA@bio-techne.com

General Contact Information

www.novusbio.com
Technical Support: nb-technical@bio-techne.com
Orders: nb-customerservice@bio-techne.com
General: novus@novusbio.com

Products Related to NBP3-32577

HAF008	Goat anti-Rabbit IgG Secondary Antibody [HRP]
NB7160	Goat anti-Rabbit IgG (H+L) Secondary Antibody [HRP]
NBP2-24891	Rabbit IgG Isotype Control
NBP2-33954PEP	MCM2 Recombinant Protein Antigen

Limitations

This product is for research use only and is not approved for use in humans or in clinical diagnosis. Primary Antibodies are guaranteed for 1 year from date of receipt.

For more information on our 100% guarantee, please visit www.novusbio.com/guarantee

Earn gift cards/discounts by submitting a review: www.novusbio.com/reviews/submit/NBP3-32577

Earn gift cards/discounts by submitting a publication using this product:
www.novusbio.com/publications

