

Product Datasheet

Importin beta/KPNB1 Antibody (PSH01-59) NBP3-32510

Unit Size: 100 ul

Store at 4C short term. Aliquot and store at -20C long term. Avoid freeze-thaw cycles.

www.novusbio.com



technical@novusbio.com

Protocols, Publications, Related Products, Reviews, Research Tools and Images at:
www.novusbio.com/NBP3-32510

Updated 8/7/2025 v.20.1

Earn rewards for product
reviews and publications.

Submit a publication at www.novusbio.com/publications

Submit a review at www.novusbio.com/reviews/destination/NBP3-32510



NBP3-32510

Importin beta/KPNB1 Antibody (PSH01-59)

Product Information	
Unit Size	100 ul
Concentration	1 mg/ml
Storage	Store at 4C short term. Aliquot and store at -20C long term. Avoid freeze-thaw cycles.
Clonality	Monoclonal
Clone	PSH01-59
Preservative	0.05% Sodium Azide
Isotype	IgG
Purity	Protein A purified
Buffer	PBS (pH7.4), 0.1% BSA and 40% Glycerol
Target Molecular Weight	97.2 kDa

Product Description	
Host	Rabbit
Gene ID	3837
Gene Symbol	KPNB1
Species	Human, Mouse, Rat
Immunogen	Recombinant protein within human Importin beta/KPNB1 aa 1-550. (Uniprot: Q14974)

Product Application Details	
Applications	Western Blot, Immunoprecipitation
Recommended Dilutions	Western Blot 1:1000, Immunoprecipitation 1-2ug/sample

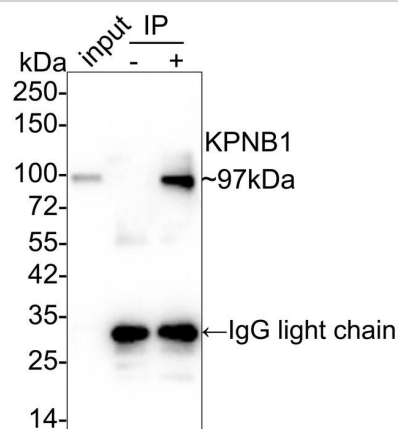


Images

Immunoprecipitation: Importin beta/KPNB1 Antibody (PSH01-59) [NBP3-32510] - Importin beta/KPNB1 was immunoprecipitated in 0.2mg HeLa cell lysate with NBP3-32510 at 2 ug/25 ul agarose. Western blot was performed from the immunoprecipitate using NBP3-32510 at 1/1,000 dilution. Anti-Rabbit IgG for IP Nano-secondary antibody at 1/5,000 dilution was used for 1 hour at room temperature.

Lane 1: HeLa cell lysate (input)
 Lane 2: Rabbit IgG instead of NBP3-32510 in HeLa cell lysate
 Lane 3: NBP3-32510 IP in HeLa cell lysate

Blocking/Dilution buffer: 5% NFDM/TBST
 Exposure time: 24 seconds



Western Blot: Importin beta/KPNB1 Antibody (PSH01-59) [NBP3-32510]
 - Western blot analysis of Importin beta/KPNB1 on different lysates with Rabbit anti-Importin beta/KPNB1 antibody (NBP3-32510) at 1/1,000 dilution.

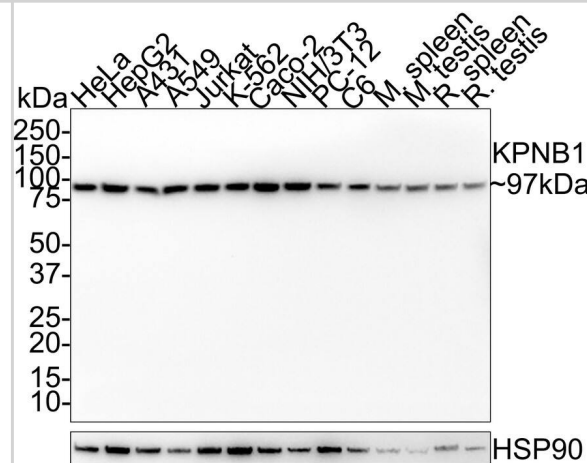
Lane 1: HeLa cell lysate (20 ug/Lane)
 Lane 2: HepG2 cell lysate (20 ug/Lane)
 Lane 3: A431 cell lysate (20 ug/Lane)
 Lane 4: A549 cell lysate (20 ug/Lane)
 Lane 5: Jurkat cell lysate (20 ug/Lane)
 Lane 6: K-562 cell lysate (20 ug/Lane)
 Lane 7: Caco-2 cell lysate (20 ug/Lane)
 Lane 8: NIH/3T3 cell lysate (20 ug/Lane)
 Lane 9: PC-12 cell lysate (20 ug/Lane)
 Lane 10: C6 cell lysate (20 ug/Lane)
 Lane 11: Mouse spleen tissue lysate (40 ug/Lane)
 Lane 12: Mouse testis tissue lysate (40 ug/Lane)
 Lane 13: Rat spleen tissue lysate (40 ug/Lane)
 Lane 14: Rat testis tissue lysate (40 ug/Lane)

Predicted band size: 97 kDa
 Observed band size: 97 kDa

Exposure time: 1 minute;

4-20% SDS-PAGE gel.

Proteins were transferred to a PVDF membrane and blocked with 5% NFDM/TBST for 1 hour at room temperature. The primary antibody (NBP3-32510) at 1/1,000 dilution was used in 5% NFDM/TBST at room temperature for 2 hours. Goat Anti-Rabbit IgG - HRP Secondary Antibody at 1/100,000 dilution was used for 1 hour at room temperature.





Novus Biologicals USA

10730 E. Briarwood Avenue
Centennial, CO 80112
USA
Phone: 303.730.1950
Toll Free: 1.888.506.6887
Fax: 303.730.1966
nb-customerservice@bio-techne.com

Bio-Techne Canada

21 Canmotor Ave
Toronto, ON M8Z 4E6
Canada
Phone: 905.827.6400
Toll Free: 855.668.8722
Fax: 905.827.6402
canada.inquires@bio-techne.com

Bio-Techne Ltd

19 Barton Lane
Abingdon Science Park
Abingdon, OX14 3NB, United Kingdom
Phone: (44) (0) 1235 529449
Free Phone: 0800 37 34 15
Fax: (44) (0) 1235 533420
info.EMEA@bio-techne.com

General Contact Information

www.novusbio.com
Technical Support: nb-technical@bio-techne.com
Orders: nb-customerservice@bio-techne.com
General: novus@novusbio.com

Products Related to NBP3-32510

HAF008	Goat anti-Rabbit IgG Secondary Antibody [HRP]
NB7160	Goat anti-Rabbit IgG (H+L) Secondary Antibody [HRP]
NBP2-24891	Rabbit IgG Isotype Control
NBP1-78815-50ug	Recombinant Human Importin beta/KPNB1 His Protein

Limitations

This product is for research use only and is not approved for use in humans or in clinical diagnosis. Primary Antibodies are guaranteed for 1 year from date of receipt.

For more information on our 100% guarantee, please visit www.novusbio.com/guarantee

Earn gift cards/discounts by submitting a review: www.novusbio.com/reviews/submit/NBP3-32510

Earn gift cards/discounts by submitting a publication using this product:
www.novusbio.com/publications

