

# Product Datasheet

## Plasma Kallikrein/KLKB1 Antibody (JE31-29) NBP3-32506

Unit Size: 100 ul

Store at 4C short term. Aliquot and store at -20C long term. Avoid freeze-thaw cycles.

[www.novusbio.com](http://www.novusbio.com)



[technical@novusbio.com](mailto:technical@novusbio.com)

Protocols, Publications, Related Products, Reviews, Research Tools and Images at:  
[www.novusbio.com/NBP3-32506](http://www.novusbio.com/NBP3-32506)

Updated 8/7/2025 v.20.1

Earn rewards for product  
reviews and publications.

Submit a publication at [www.novusbio.com/publications](http://www.novusbio.com/publications)

Submit a review at [www.novusbio.com/reviews/destination/NBP3-32506](http://www.novusbio.com/reviews/destination/NBP3-32506)



**NBP3-32506**

Plasma Kallikrein/KLKB1 Antibody (JE31-29)

| Product Information     |  |
|-------------------------|--|
| Unit Size               | 100 ul   |
| Concentration           | 1 mg/ml  |
| Storage                 | Store at 4C short term. Aliquot and store at -20C long term. Avoid freeze-thaw cycles. |
| Clonality               | Monoclonal   |
| Clone                   | JE31-29  |
| Preservative            | 0.05% Sodium Azide   |
| Isotype                 | IgG  |
| Purity                  | Protein A purified   |
| Buffer                  | 1*TBS (pH7.4), 0.05% BSA and 40% Glycerol  |
| Target Molecular Weight | 71 kDa   |

| Product Description |  |
|---------------------|--|
| Host                | Rabbit   |
| Gene ID             | 3818   |
| Gene Symbol         | KLKB1  |
| Species             | Human  |
| Immunogen           | Synthetic peptide within Human Plasma Kallikrein/KLKB1 aa 589-638 / 638. (Uniprot: P03952) |

| Product Application Details |  |
|-----------------------------|--|
| Applications                | Western Blot, Immunohistochemistry-Paraffin, Immunohistochemistry              |
| Recommended Dilutions       | Western Blot 1:1000, Immunohistochemistry, Immunohistochemistry-Paraffin 1:200 |



## Images

Western Blot: Plasma Kallikrein/KLKB1 Antibody (JE31-29) [NBP3-32506] - Western blot analysis of Plasma Kallikrein/KLKB1 on human liver tissue lysates with Rabbit anti-Plasma Kallikrein/KLKB1 antibody (NBP3-32506) at 1/1,000 dilution.

Lysates/proteins at 30 ug/Lane.

Predicted band size: 71 kDa

Observed band size: 71 kDa

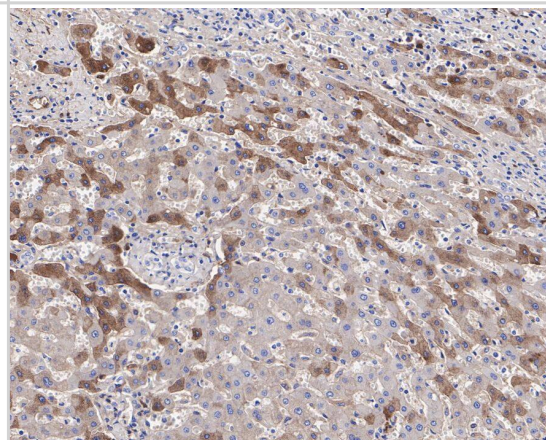
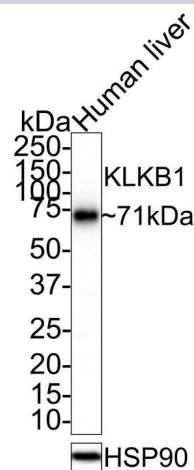
Exposure time: 1 minute 30 seconds;

4-20% SDS-PAGE gel.

Proteins were transferred to a PVDF membrane and blocked with 5% NFDM/TBST for 1 hour at room temperature. The primary antibody (NBP3-32506) at 1/1,000 dilution was used in 5% NFDM/TBST at room temperature for 2 hours. Goat Anti-Rabbit IgG - HRP Secondary Antibody at 1:100,000 dilution was used for 1 hour at room temperature.

Immunohistochemistry: Plasma Kallikrein/KLKB1 Antibody (JE31-29) [NBP3-32506] - Immunohistochemical analysis of paraffin-embedded human liver tissue with Rabbit anti-Plasma Kallikrein/KLKB1 antibody (NBP3-32506) at 1/200 dilution.

The section was pre-treated using heat mediated antigen retrieval with Tris-EDTA buffer (pH 9.0) for 20 minutes. The tissues were blocked in 1% BSA for 20 minutes at room temperature, washed with ddH<sub>2</sub>O and PBS, and then probed with the primary antibody (NBP3-32506) at 1/200 dilution for 1 hour at room temperature. The detection was performed using an HRP conjugated compact polymer system. DAB was used as the chromogen. Tissues were counterstained with hematoxylin and mounted with DPX.





### **Novus Biologicals USA**

10730 E. Briarwood Avenue  
Centennial, CO 80112  
USA  
Phone: 303.730.1950  
Toll Free: 1.888.506.6887  
Fax: 303.730.1966  
nb-customerservice@bio-techne.com

### **Bio-Techne Canada**

21 Canmotor Ave  
Toronto, ON M8Z 4E6  
Canada  
Phone: 905.827.6400  
Toll Free: 855.668.8722  
Fax: 905.827.6402  
canada.inquires@bio-techne.com

### **Bio-Techne Ltd**

19 Barton Lane  
Abingdon Science Park  
Abingdon, OX14 3NB, United Kingdom  
Phone: (44) (0) 1235 529449  
Free Phone: 0800 37 34 15  
Fax: (44) (0) 1235 533420  
info.EMEA@bio-techne.com

### **General Contact Information**

www.novusbio.com  
Technical Support: nb-technical@bio-techne.com  
Orders: nb-customerservice@bio-techne.com  
General: novus@novusbio.com

### **Products Related to NBP3-32506**

---

|            |   |
|------------|---|
| HAF008     | Goat anti-Rabbit IgG Secondary Antibody [HRP]       |
| NB7160     | Goat anti-Rabbit IgG (H+L) Secondary Antibody [HRP] |
| NBP2-24891 | Rabbit IgG Isotype Control                          |
| DY4517-05  | Neutrophil Elastase/ELA2 [Biotin]                   |

---

### **Limitations**

This product is for research use only and is not approved for use in humans or in clinical diagnosis. Primary Antibodies are guaranteed for 1 year from date of receipt.

For more information on our 100% guarantee, please visit [www.novusbio.com/guarantee](http://www.novusbio.com/guarantee)

Earn gift cards/discounts by submitting a review: [www.novusbio.com/reviews/submit/NBP3-32506](http://www.novusbio.com/reviews/submit/NBP3-32506)

Earn gift cards/discounts by submitting a publication using this product:  
[www.novusbio.com/publications](http://www.novusbio.com/publications)

