

# Product Datasheet

## eEF-2 Antibody (JE32-57) NBP3-32293

Unit Size: 100 ul

Store at 4C short term. Aliquot and store at -20C long term. Avoid freeze-thaw cycles.

[www.novusbio.com](http://www.novusbio.com)



[technical@novusbio.com](mailto:technical@novusbio.com)

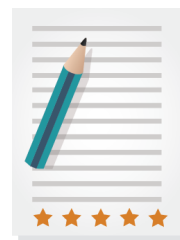
Protocols, Publications, Related Products, Reviews, Research Tools and Images at:  
[www.novusbio.com/NBP3-32293](http://www.novusbio.com/NBP3-32293)

Updated 8/7/2025 v.20.1

Earn rewards for product  
reviews and publications.

Submit a publication at [www.novusbio.com/publications](http://www.novusbio.com/publications)

Submit a review at [www.novusbio.com/reviews/destination/NBP3-32293](http://www.novusbio.com/reviews/destination/NBP3-32293)



**NBP3-32293**

eEF-2 Antibody (JE32-57)

Product Information	
Unit Size	100 ul
Concentration	1 mg/ml
Storage	Store at 4C short term. Aliquot and store at -20C long term. Avoid freeze-thaw cycles.
Clonality	Monoclonal
Clone	JE32-57
Preservative	0.05% Sodium Azide
Isotype	IgG
Purity	Protein A purified
Buffer	1*TBS (pH7.4), 0.05% BSA and 40% Glycerol
Target Molecular Weight	95 kDa
Product Description	
Host	Rabbit
Gene ID	1938
Gene Symbol	EEF2
Species	Human, Mouse, Rat
Immunogen	Synthetic peptide within Human eEF-2 aa 809-858 / 858. (Uniprot: P13639)
Product Application Details	
Applications	Western Blot, Flow Cytometry, Immunocytochemistry/ Immunofluorescence
Recommended Dilutions	Western Blot 1:1000-1:2000, Flow Cytometry 1:500-1:1000, Immunocytochemistry/ Immunofluorescence 1:250



## Images

**Western Blot: eEF-2 Antibody (JE32-57) [NBP3-32293]** - Western blot analysis of eEF-2 on different lysates with Rabbit anti-eEF-2 antibody (NBP3-32293) at 1/1,000 dilution.

Lane 1: HeLa cell lysate (20 ug/Lane)  
 Lane 2: Jurkat cell lysate (20 ug/Lane)  
 Lane 3: NIH/3T3 cell lysate (20 ug/Lane)  
 Lane 4: PC-12 cell lysate (20 ug/Lane)  
 Lane 5: Mouse liver tissue lysate (40 ug/Lane)  
 Lane 6: Rat spleen tissue lysate (40 ug/Lane)

Predicted band size: 95 kDa  
 Observed band size: 95 kDa

Exposure time: 8 seconds;

4-20% SDS-PAGE gel.

Proteins were transferred to a PVDF membrane and blocked with 5% NFDM/TBST for 1 hour at room temperature. The primary antibody (NBP3-32293) at 1/1,000 dilution was used in 5% NFDM/TBST at room temperature for 2 hours. Goat Anti-Rabbit IgG - HRP Secondary Antibody at 1:100,000 dilution was used for 1 hour at room temperature.

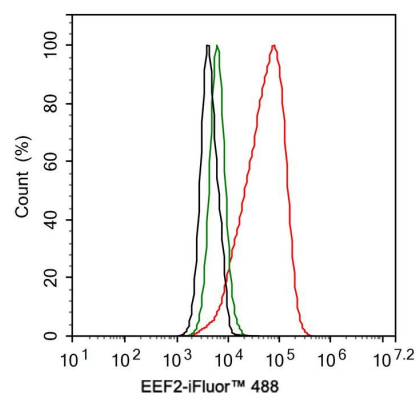
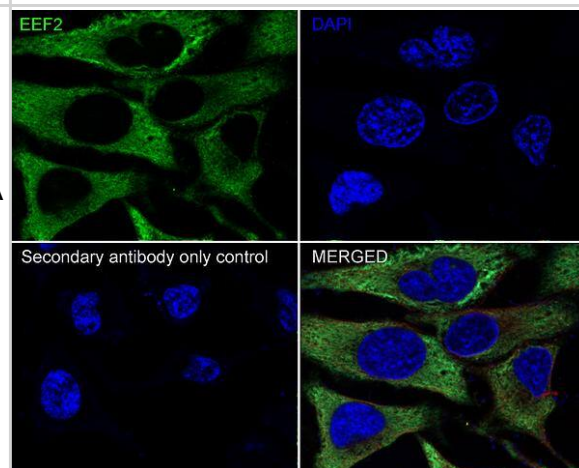
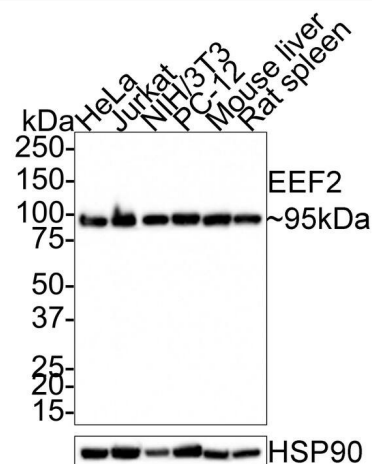
**Immunocytochemistry/ Immunofluorescence: eEF-2 Antibody (JE32-57) [NBP3-32293]** - Immunocytochemistry analysis of HeLa cells labeling eEF-2 with Rabbit anti-eEF-2 antibody (NBP3-32293) at 1/250 dilution.

Cells were fixed in 100% methanol for 10 minutes, permeabilized with 0.1% Triton X-100 in PBS for 15 minutes, and then blocked with 1% BSA for 30 minutes at room temperature. Cells were then incubated with Rabbit anti-eEF-2 antibody (NBP3-32293) at 1/250 dilution in 2% negative goat serum overnight at 4 °C. Goat Anti-Rabbit IgG H&L (iFluor™ 488) was used as the secondary antibody at 1/1,000 dilution. Nuclear DNA was labelled in blue with DAPI.

Beta tubulin (red) was stained at 1/100 dilution overnight at +4 °C. Goat Anti-Mouse IgG H&L (iFluor™ 594) was used as the secondary antibody at 1/1,000 dilution.

**Flow Cytometry: eEF-2 Antibody (JE32-57) [NBP3-32293]** - Flow cytometric analysis of HeLa cells labeling eEF-2.

Cells were fixed and permeabilized. Then stained with the primary antibody (NBP3-32293, 1ug/ml) (red) compared with Rabbit IgG Isotype Control (green). After incubation of the primary antibody at +4 °C for an hour, the cells were stained with a iFluor™ 488 conjugate-Goat anti-Rabbit IgG Secondary antibody at 1/1,000 dilution for 30 minutes at +4 °C. Unlabelled sample was used as a control (cells without incubation with primary antibody; black).





### **Novus Biologicals USA**

10730 E. Briarwood Avenue  
Centennial, CO 80112  
USA  
Phone: 303.730.1950  
Toll Free: 1.888.506.6887  
Fax: 303.730.1966  
nb-customerservice@bio-techne.com

### **Bio-Techne Canada**

21 Canmotor Ave  
Toronto, ON M8Z 4E6  
Canada  
Phone: 905.827.6400  
Toll Free: 855.668.8722  
Fax: 905.827.6402  
canada.inquires@bio-techne.com

### **Bio-Techne Ltd**

19 Barton Lane  
Abingdon Science Park  
Abingdon, OX14 3NB, United Kingdom  
Phone: (44) (0) 1235 529449  
Free Phone: 0800 37 34 15  
Fax: (44) (0) 1235 533420  
info.EMEA@bio-techne.com

### **General Contact Information**

www.novusbio.com  
Technical Support: nb-technical@bio-techne.com  
Orders: nb-customerservice@bio-techne.com  
General: novus@novusbio.com

### **Products Related to NBP3-32293**

---

HAF008	Goat anti-Rabbit IgG Secondary Antibody [HRP]
NB7160	Goat anti-Rabbit IgG (H+L) Secondary Antibody [HRP]
NBP2-24891	Rabbit IgG Isotype Control
NBP2-51776-0.1mg	Recombinant Human eEF-2 His Protein

---

### **Limitations**

This product is for research use only and is not approved for use in humans or in clinical diagnosis. Primary Antibodies are guaranteed for 1 year from date of receipt.

For more information on our 100% guarantee, please visit [www.novusbio.com/guarantee](http://www.novusbio.com/guarantee)

Earn gift cards/discounts by submitting a review: [www.novusbio.com/reviews/submit/NBP3-32293](http://www.novusbio.com/reviews/submit/NBP3-32293)

Earn gift cards/discounts by submitting a publication using this product:  
[www.novusbio.com/publications](http://www.novusbio.com/publications)

