

# Product Datasheet

## CRLF3 Antibody (PSH03-88)

### NBP3-32223

Unit Size: 100 ul

Store at 4C short term. Aliquot and store at -20C long term. Avoid freeze-thaw cycles.

[www.novusbio.com](http://www.novusbio.com)



[technical@novusbio.com](mailto:technical@novusbio.com)

Protocols, Publications, Related Products, Reviews, Research Tools and Images at:  
[www.novusbio.com/NBP3-32223](http://www.novusbio.com/NBP3-32223)

Updated 8/7/2025 v.20.1

Earn rewards for product  
reviews and publications.

Submit a publication at [www.novusbio.com/publications](http://www.novusbio.com/publications)

Submit a review at [www.novusbio.com/reviews/destination/NBP3-32223](http://www.novusbio.com/reviews/destination/NBP3-32223)



**NBP3-32223**

CRLF3 Antibody (PSH03-88)

Product Information	
Unit Size	100 ul
Concentration	1 mg/ml
Storage	Store at 4C short term. Aliquot and store at -20C long term. Avoid freeze-thaw cycles.
Clonality	Monoclonal
Clone	PSH03-88
Preservative	0.05% Sodium Azide
Isotype	IgG
Purity	Protein A purified
Buffer	PBS (pH7.4), 0.1% BSA and 40% Glycerol
Target Molecular Weight	50 kDa
Product Description	
Host	Rabbit
Gene ID	51379
Gene Symbol	CRLF3
Species	Human, Mouse, Rat
Immunogen	Recombinant protein within human CRLF3 aa 1-442 / 442. (Uniprot: Q8IUI8)
Product Application Details	
Applications	Western Blot, Immunocytochemistry/ Immunofluorescence
Recommended Dilutions	Western Blot 1:2000, Immunocytochemistry/ Immunofluorescence 1:100



## Images

Western Blot: CRLF3 Antibody (PSH03-88) [NBP3-32223] - Western blot analysis of CRLF3 on different lysates with Rabbit anti-CRLF3 antibody (NBP3-32223) at 1/2,000 dilution.

Lane 1: HeLa cell lysate (20 ug/Lane)  
 Lane 2: Raji cell lysate (20 ug/Lane)  
 Lane 3: Ramos cell lysate (20 ug/Lane)  
 Lane 4: K-562 cell lysate (20 ug/Lane)  
 Lane 5: Jurkat cell lysate (20 ug/Lane)  
 Lane 6: 293T cell lysate (20 ug/Lane)  
 Lane 7: A549 cell lysate (20 ug/Lane)  
 Lane 8: RAW264.7 cell lysate (20 ug/Lane)  
 Lane 9: PC-12 cell lysate (20 ug/Lane)  
 Lane 10: Mouse thymus tissue lysate (40 ug/Lane)  
 Lane 11: Mouse spleen tissue lysate (40 ug/Lane)  
 Lane 12: Rat thymus tissue lysate (40 ug/Lane)  
 Lane 13: Rat testis tissue lysate (40 ug/Lane)

Predicted band size: 50 kDa  
 Observed band size: 50 kDa

Exposure time: 30 seconds;

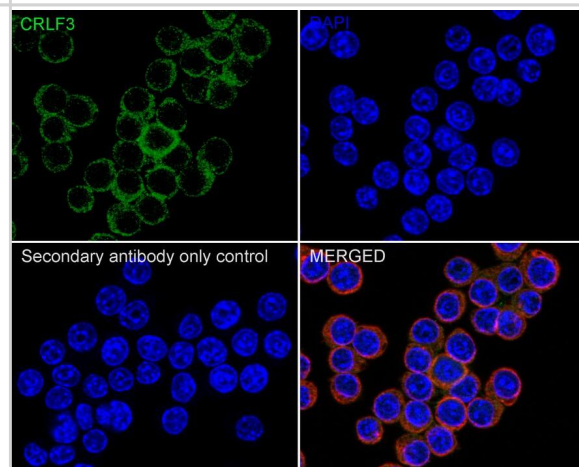
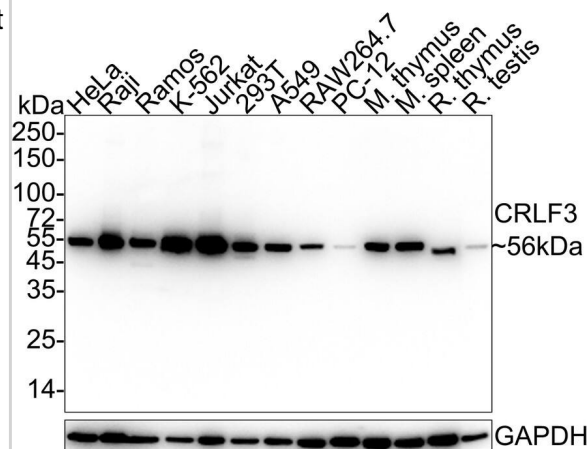
4-20% SDS-PAGE gel.

Proteins were transferred to a PVDF membrane and blocked with 5% NFDM/TBST for 1 hour at room temperature. The primary antibody (NBP3-32223) at 1/2,000 dilution was used in 5% NFDM/TBST at 4°C overnight. Goat Anti-Rabbit IgG - HRP Secondary Antibody at 1/50,000 dilution was used for 1 hour at room temperature.

Immunocytochemistry/ Immunofluorescence: CRLF3 Antibody (PSH03-88) [NBP3-32223] - Immunocytochemistry analysis of RAW264.7 cells labeling CRLF3 with Rabbit anti-CRLF3 antibody (NBP3-32223) at 1/100 dilution.

Cells were fixed in 4% paraformaldehyde for 20 minutes at room temperature, permeabilized with 0.1% Triton X-100 in PBS for 5 minutes at room temperature, then blocked with 1% BSA in 10% negative goat serum for 1 hour at room temperature. Cells were then incubated with Rabbit anti-CRLF3 antibody (NBP3-32223) at 1/100 dilution in 1% BSA in PBST overnight at 4°C. Goat Anti-Rabbit IgG H&L (iFluor™ 488) was used as the secondary antibody at 1/1,000 dilution. PBS instead of the primary antibody was used as the secondary antibody only control. Nuclear DNA was labelled in blue with DAPI.

Beta tubulin (red) was stained at 1/100 dilution overnight at +4°C. Goat Anti-Mouse IgG H&L (iFluor™ 594) was used as the secondary antibody at 1/1,000 dilution.





### **Novus Biologicals USA**

10730 E. Briarwood Avenue  
Centennial, CO 80112  
USA  
Phone: 303.730.1950  
Toll Free: 1.888.506.6887  
Fax: 303.730.1966  
nb-customerservice@bio-techne.com

### **Bio-Techne Canada**

21 Canmotor Ave  
Toronto, ON M8Z 4E6  
Canada  
Phone: 905.827.6400  
Toll Free: 855.668.8722  
Fax: 905.827.6402  
canada.inquires@bio-techne.com

### **Bio-Techne Ltd**

19 Barton Lane  
Abingdon Science Park  
Abingdon, OX14 3NB, United Kingdom  
Phone: (44) (0) 1235 529449  
Free Phone: 0800 37 34 15  
Fax: (44) (0) 1235 533420  
info.EMEA@bio-techne.com

### **General Contact Information**

[www.novusbio.com](http://www.novusbio.com)  
Technical Support: nb-technical@bio-techne.com  
Orders: nb-customerservice@bio-techne.com  
General: novus@novusbio.com

### **Products Related to NBP3-32223**

HAF008	Goat anti-Rabbit IgG Secondary Antibody [HRP]
NB7160	Goat anti-Rabbit IgG (H+L) Secondary Antibody [HRP]
NBP2-24891	Rabbit IgG Isotype Control
H00051379-P01-10ug	Recombinant Human CRLF3 GST (N-Term) Protein

### **Limitations**

This product is for research use only and is not approved for use in humans or in clinical diagnosis. Primary Antibodies are guaranteed for 1 year from date of receipt.

For more information on our 100% guarantee, please visit [www.novusbio.com/guarantee](http://www.novusbio.com/guarantee)

Earn gift cards/discounts by submitting a review: [www.novusbio.com/reviews/submit/NBP3-32223](http://www.novusbio.com/reviews/submit/NBP3-32223)

Earn gift cards/discounts by submitting a publication using this product:  
[www.novusbio.com/publications](http://www.novusbio.com/publications)

