

Product Datasheet

CrkL Antibody (JE50-21) NBP3-32222

Unit Size: 100 ul

Store at 4C short term. Aliquot and store at -20C long term. Avoid freeze-thaw cycles.

www.novusbio.com



technical@novusbio.com

Protocols, Publications, Related Products, Reviews, Research Tools and Images at:
www.novusbio.com/NBP3-32222

Updated 8/7/2025 v.20.1

Earn rewards for product
reviews and publications.

Submit a publication at www.novusbio.com/publications

Submit a review at www.novusbio.com/reviews/destination/NBP3-32222



NBP3-32222

CrkL Antibody (JE50-21)

Product Information	
Unit Size	100 ul
Concentration	1 mg/ml
Storage	Store at 4C short term. Aliquot and store at -20C long term. Avoid freeze-thaw cycles.
Clonality	Monoclonal
Clone	JE50-21
Preservative	0.05% Sodium Azide
Isotype	IgG
Purity	Protein A purified
Buffer	1*TBS (pH7.4), 0.05% BSA and 40% Glycerol
Target Molecular Weight	34 kDa
Product Description	
Host	Rabbit
Gene ID	1399
Gene Symbol	CRKL
Species	Human, Mouse, Rat
Immunogen	Synthetic peptide within Human CrkL aa 254-303 / 303. (Uniprot: P46109)
Product Application Details	
Applications	Western Blot, Immunohistochemistry-Paraffin, Flow Cytometry, Immunohistochemistry
Recommended Dilutions	Western Blot 1:1000, Flow Cytometry 1:1000, Immunohistochemistry, Immunohistochemistry-Paraffin 1:200



Images

Western Blot: CrkL Antibody (JE50-21) [NBP3-32222] - Western blot analysis of CrkL on different lysates with Rabbit anti-CrkL antibody (NBP3-32222) at 1/1,000 dilution.

Lane 1: K-562 cell lysate (20 ug/Lane)
 Lane 2: A431 cell lysate (20 ug/Lane)
 Lane 3: HT-29 cell lysate (20 ug/Lane)
 Lane 4: Jurkat cell lysate (20 ug/Lane)
 Lane 5: NIH/3T3 cell lysate (20 ug/Lane)
 Lane 6: C6 cell lysate (20 ug/Lane)
 Lane 7: Mouse brain tissue lysate (40 ug/Lane)
 Lane 8: Rat brain tissue lysate (40 ug/Lane)

Predicted band size: 34 kDa
 Observed band size: 37 kDa

Exposure time: 5 minutes;

4-20% SDS-PAGE gel.

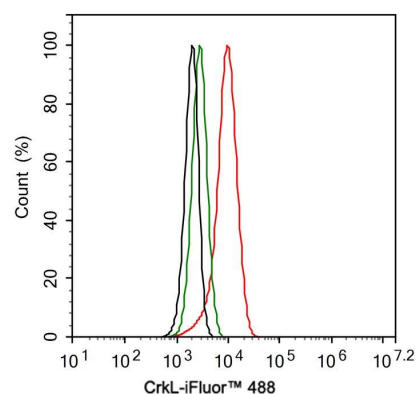
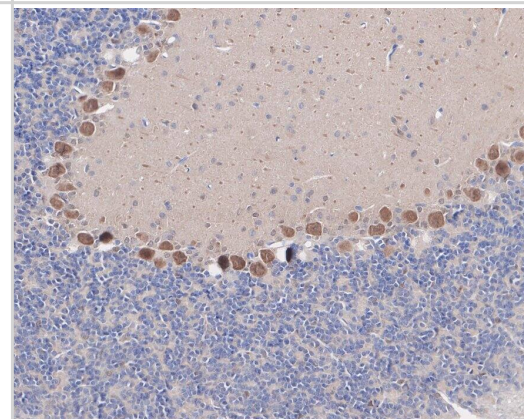
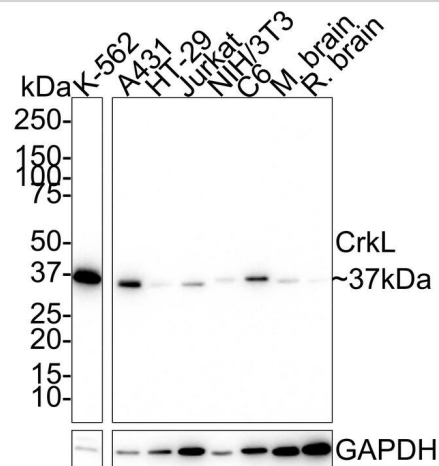
Proteins were transferred to a PVDF membrane and blocked with 5% NFDM/TBST for 1 hour at room temperature. The primary antibody (NBP3-32222) at 1/1,000 dilution was used in 5% NFDM/TBST at room temperature for 2 hours. Goat Anti-Rabbit IgG - HRP Secondary Antibody at 1/50,000 dilution was used for 1 hour at room temperature.

Immunohistochemistry: CrkL Antibody (JE50-21) [NBP3-32222] - Immunohistochemical analysis of paraffin-embedded rat cerebellum tissue with Rabbit anti-CrkL antibody (NBP3-32222) at 1/200 dilution.

The section was pre-treated using heat mediated antigen retrieval with Tris-EDTA buffer (pH 9.0) for 20 minutes. The tissues were blocked in 1% BSA for 20 minutes at room temperature, washed with ddH₂O and PBS, and then probed with the primary antibody (NBP3-32222) at 1/200 dilution for 1 hour at room temperature. The detection was performed using an HRP conjugated compact polymer system. DAB was used as the chromogen. Tissues were counterstained with hematoxylin and mounted with DPX.

Flow Cytometry: CrkL Antibody (JE50-21) [NBP3-32222] - Flow cytometric analysis of A431 cells labeling CrkL.

Cells were fixed and permeabilized. Then stained with the primary antibody (NBP3-32222, 1 µg/mL) (red) compared with Rabbit IgG Isotype Control (green). After incubation of the primary antibody at +4°C for an hour, the cells were stained with a iFluor™ 488 conjugate-Goat anti-Rabbit IgG Secondary antibody at 1/1,000 dilution for 30 minutes at +4°C. Unlabelled sample was used as a control (cells without incubation with primary antibody; black).





Novus Biologicals USA

10730 E. Briarwood Avenue
Centennial, CO 80112
USA
Phone: 303.730.1950
Toll Free: 1.888.506.6887
Fax: 303.730.1966
nb-customerservice@bio-techne.com

Bio-Techne Canada

21 Canmotor Ave
Toronto, ON M8Z 4E6
Canada
Phone: 905.827.6400
Toll Free: 855.668.8722
Fax: 905.827.6402
canada.inquires@bio-techne.com

Bio-Techne Ltd

19 Barton Lane
Abingdon Science Park
Abingdon, OX14 3NB, United Kingdom
Phone: (44) (0) 1235 529449
Free Phone: 0800 37 34 15
Fax: (44) (0) 1235 533420
info.EMEA@bio-techne.com

General Contact Information

www.novusbio.com
Technical Support: nb-technical@bio-techne.com
Orders: nb-customerservice@bio-techne.com
General: novus@novusbio.com

Products Related to NBP3-32222

HAF008	Goat anti-Rabbit IgG Secondary Antibody [HRP]
NB7160	Goat anti-Rabbit IgG (H+L) Secondary Antibody [HRP]
NBP2-24891	Rabbit IgG Isotype Control
NBP1-50941-0.1mg	Recombinant Human CrkL His Protein

Limitations

This product is for research use only and is not approved for use in humans or in clinical diagnosis. Primary Antibodies are guaranteed for 1 year from date of receipt.

For more information on our 100% guarantee, please visit www.novusbio.com/guarantee

Earn gift cards/discounts by submitting a review: www.novusbio.com/reviews/submit/NBP3-32222

Earn gift cards/discounts by submitting a publication using this product:
www.novusbio.com/publications

