

# Product Datasheet

## Cathepsin L Antibody (PSH03-92)

### NBP3-32112

Unit Size: 100 ul

Store at 4C short term. Aliquot and store at -20C long term. Avoid freeze-thaw cycles.

[www.novusbio.com](http://www.novusbio.com)



[technical@novusbio.com](mailto:technical@novusbio.com)

Protocols, Publications, Related Products, Reviews, Research Tools and Images at:  
[www.novusbio.com/NBP3-32112](http://www.novusbio.com/NBP3-32112)

Updated 8/7/2025 v.20.1

Earn rewards for product  
reviews and publications.

Submit a publication at [www.novusbio.com/publications](http://www.novusbio.com/publications)

Submit a review at [www.novusbio.com/reviews/destination/NBP3-32112](http://www.novusbio.com/reviews/destination/NBP3-32112)



**NBP3-32112**

Cathepsin L Antibody (PSH03-92)

Product Information	
Unit Size	100 ul
Concentration	1 mg/ml
Storage	Store at 4C short term. Aliquot and store at -20C long term. Avoid freeze-thaw cycles.
Clonality	Monoclonal
Clone	PSH03-92
Preservative	0.05% Sodium Azide
Isotype	IgG
Purity	Protein A purified
Buffer	PBS (pH7.4), 0.1% BSA and 40% Glycerol
Target Molecular Weight	38 kDa
Product Description	
Host	Rabbit
Gene ID	1514
Gene Symbol	CTSL
Species	Human, Mouse, Rat, Monkey
Immunogen	Recombinant protein within human Cathepsin L aa 84-333 / 333. (Uniprot: P07711)
Product Application Details	
Applications	Western Blot, Immunohistochemistry-Paraffin, Immunohistochemistry
Recommended Dilutions	Western Blot 1:5000, Immunohistochemistry, Immunohistochemistry-Paraffin 1:10000



## Images

Western Blot: Cathepsin L Antibody (PSH03-92) [NBP3-32112] - Western blot analysis of Cathepsin L on different lysates with Rabbit anti-Cathepsin L antibody (NBP3-32112) at 1/5,000 dilution.

Lane 1: A549 cell lysate (15 ug/Lane)  
 Lane 2: HepG2 cell lysate (15 ug/Lane)  
 Lane 3: HEK-293 cell lysate (15 ug/Lane)  
 Lane 4: MDA-MB-231 cell lysate (15 ug/Lane)  
 Lane 5: Human kidney tissue lysate (30 ug/Lane)  
 Lane 6: Human liver tissue lysate (30 ug/Lane)  
 Lane 7: NIH/3T3 cell lysate (15 ug/Lane)  
 Lane 8: PC-12 cell lysate (15 ug/Lane)  
 Lane 9: Mouse kidney tissue lysate (30 ug/Lane)  
 Lane 10: Rat kidney tissue lysate (30 ug/Lane)  
 Lane 11: Mouse liver tissue lysate (30 ug/Lane)  
 Lane 12: Rat liver tissue lysate (30 ug/Lane)  
 Lane 13: COS-1 cell lysate (15 ug/Lane)

Predicted band size: 38 kDa  
 Observed band size: 20-45 kDa

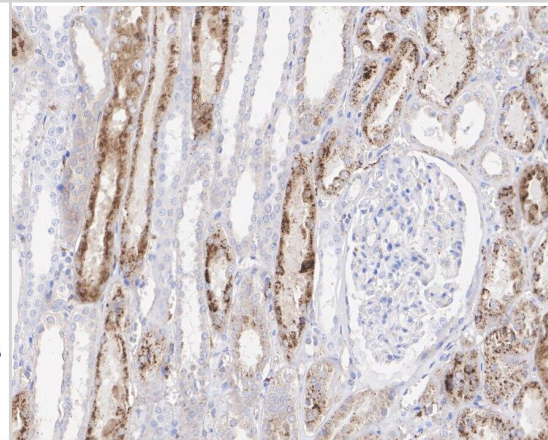
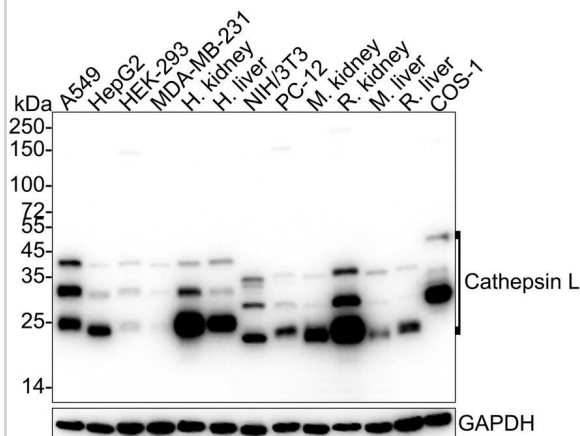
Exposure time: 10 seconds;

4-20% SDS-PAGE gel.

Proteins were transferred to a PVDF membrane and blocked with 5% NFDM/TBST for 1 hour at room temperature. The primary antibody (NBP3-32112) at 1/5,000 dilution was used in 5% NFDM/TBST at 4°C overnight. Goat Anti-Rabbit IgG - HRP Secondary Antibody at 1/50,000 dilution was used for 1 hour at room temperature.

Immunohistochemistry: Cathepsin L Antibody (PSH03-92) [NBP3-32112] - Immunohistochemical analysis of paraffin-embedded human kidney tissue with Rabbit anti-Cathepsin L antibody (NBP3-32112) at 1/10,000 dilution.

The section was pre-treated using heat mediated antigen retrieval with sodium citrate buffer (pH 6.0) for 2 minutes. The tissues were blocked in 1% BSA for 20 minutes at room temperature, washed with ddH<sub>2</sub>O and PBS, and then probed with the primary antibody (NBP3-32112) at 1/1,000 dilution for 1 hour at room temperature. The detection was performed using an HRP conjugated compact polymer system. DAB was used as the chromogen. Tissues were counterstained with hematoxylin and mounted with DPX.





### **Novus Biologicals USA**

10730 E. Briarwood Avenue  
Centennial, CO 80112  
USA  
Phone: 303.730.1950  
Toll Free: 1.888.506.6887  
Fax: 303.730.1966  
nb-customerservice@bio-techne.com

### **Bio-Techne Canada**

21 Canmotor Ave  
Toronto, ON M8Z 4E6  
Canada  
Phone: 905.827.6400  
Toll Free: 855.668.8722  
Fax: 905.827.6402  
canada.inquires@bio-techne.com

### **Bio-Techne Ltd**

19 Barton Lane  
Abingdon Science Park  
Abingdon, OX14 3NB, United Kingdom  
Phone: (44) (0) 1235 529449  
Free Phone: 0800 37 34 15  
Fax: (44) (0) 1235 533420  
info.EMEA@bio-techne.com

### **General Contact Information**

www.novusbio.com  
Technical Support: nb-technical@bio-techne.com  
Orders: nb-customerservice@bio-techne.com  
General: novus@novusbio.com

### **Products Related to NBP3-32112**

---

HAF008	Goat anti-Rabbit IgG Secondary Antibody [HRP]
NB7160	Goat anti-Rabbit IgG (H+L) Secondary Antibody [HRP]
NBP2-24891	Rabbit IgG Isotype Control
NBP3-21333PEP	Cathepsin L Recombinant Protein Antigen

---

### **Limitations**

This product is for research use only and is not approved for use in humans or in clinical diagnosis. Primary Antibodies are guaranteed for 1 year from date of receipt.

For more information on our 100% guarantee, please visit [www.novusbio.com/guarantee](http://www.novusbio.com/guarantee)

Earn gift cards/discounts by submitting a review: [www.novusbio.com/reviews/submit/NBP3-32112](http://www.novusbio.com/reviews/submit/NBP3-32112)

Earn gift cards/discounts by submitting a publication using this product:  
[www.novusbio.com/publications](http://www.novusbio.com/publications)

