

Product Datasheet

MAML2 Antibody (MMLP2-1)

NBP3-27933

Unit Size: 100 ug

Store at 4C short term. Aliquot and store at -20C long term. Avoid freeze-thaw cycles.

www.novusbio.com



technical@novusbio.com

Protocols, Publications, Related Products, Reviews, Research Tools and Images at:
www.novusbio.com/NBP3-27933

Updated 9/9/2025 v.20.1

Earn rewards for product
reviews and publications.

Submit a publication at www.novusbio.com/publications

Submit a review at www.novusbio.com/reviews/destination/NBP3-27933



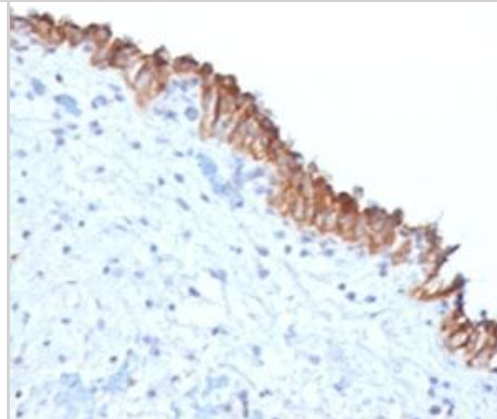
NBP3-27933**MAML2 Antibody (MMLP2-1)**

Product Information	
Unit Size	100 ug
Concentration	0.2 mg/ml
Storage	Store at 4C short term. Aliquot and store at -20C long term. Avoid freeze-thaw cycles.
Clonality	Monoclonal
Clone	MMLP2-1
Preservative	0.05% Sodium Azide
Isotype	IgG2a
Purity	Protein G purified
Buffer	PBS, 0.1 mg/ml BSA
Product Description	
Description	Novus Biologicals Mouse MAML2 Antibody (MMLP2-1) (NBP3-27933) is a monoclonal antibody validated for use in IHC, Flow and ICC/IF. All Novus Biologicals antibodies are covered by our 100% guarantee.
Host	Mouse
Gene ID	84441
Gene Symbol	MAML2
Species	Human
Immunogen	A human recombinant protein was used as the immunogen for this MAML2 antibody.
Product Application Details	
Applications	Immunohistochemistry-Paraffin, Flow Cytometry, Immunocytochemistry/Immunofluorescence
Recommended Dilutions	Flow Cytometry 0.5 - 1ug/10 ⁶ cell, Immunocytochemistry/ Immunofluorescence 1 - 2 ug, Immunohistochemistry-Paraffin 0.5 - 1 ug/ml

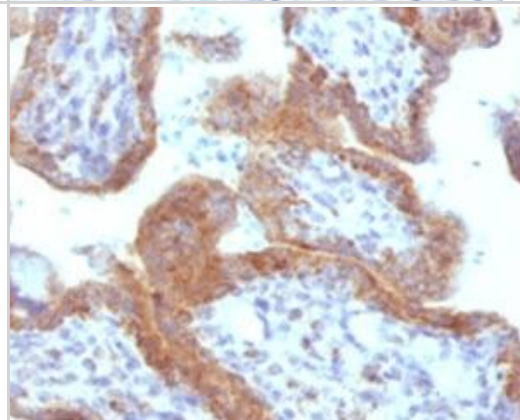


Images

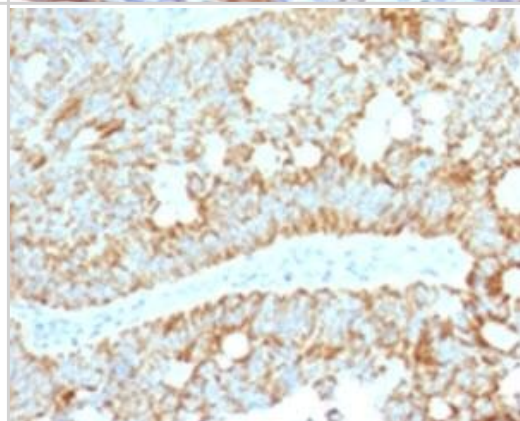
Immunohistochemistry: MAML2 Antibody (MMLP2-1) [NBP3-27933] - IHC testing of FFPE human bladder carcinoma with MAML2 antibody (clone MMLP2-1).



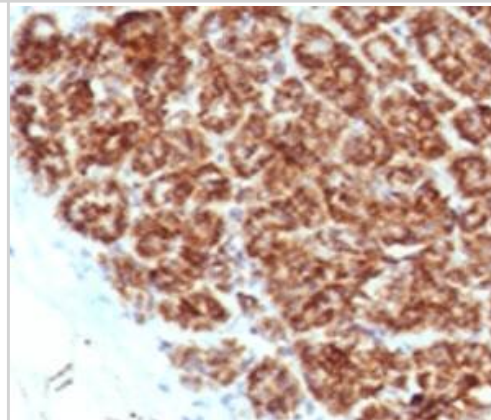
Immunohistochemistry: MAML2 Antibody (MMLP2-1) [NBP3-27933] - IHC testing of FFPE human placenta with MAML2 antibody (clone MMLP2-1).



Immunohistochemistry: MAML2 Antibody (MMLP2-1) [NBP3-27933] - IHC testing of FFPE human colon carcinoma with MAML2 antibody (clone MMLP2-1).



Immunohistochemistry: MAML2 Antibody (MMLP2-1) [NBP3-27933] - IHC testing of FFPE human pancreas with MAML2 antibody (clone MMLP2-1).





Novus Biologicals USA

10730 E. Briarwood Avenue
Centennial, CO 80112
USA
Phone: 303.730.1950
Toll Free: 1.888.506.6887
Fax: 303.730.1966
nb-customerservice@bio-techne.com

Bio-Techne Canada

21 Canmotor Ave
Toronto, ON M8Z 4E6
Canada
Phone: 905.827.6400
Toll Free: 855.668.8722
Fax: 905.827.6402
canada.inquires@bio-techne.com

Bio-Techne Ltd

19 Barton Lane
Abingdon Science Park
Abingdon, OX14 3NB, United Kingdom
Phone: (44) (0) 1235 529449
Free Phone: 0800 37 34 15
Fax: (44) (0) 1235 533420
info.EMEA@bio-techne.com

General Contact Information

www.novusbio.com
Technical Support: nb-technical@bio-techne.com
Orders: nb-customerservice@bio-techne.com
General: novus@novusbio.com

Products Related to NBP3-27933

HAF007	Goat anti-Mouse IgG Secondary Antibody [HRP]
NB720-B	Rabbit anti-Mouse IgG (H+L) Secondary Antibody [Biotin]
NBP1-96778	Mouse IgG2a Isotype Control (M2A)
NBP1-82891PEP	MAML2 Recombinant Protein Antigen

Limitations

This product is for research use only and is not approved for use in humans or in clinical diagnosis. Primary Antibodies are guaranteed for 1 year from date of receipt.

For more information on our 100% guarantee, please visit www.novusbio.com/guarantee

Earn gift cards/discounts by submitting a review: www.novusbio.com/reviews/submit/NBP3-27933

Earn gift cards/discounts by submitting a publication using this product:
www.novusbio.com/publications

