

# Product Datasheet

## Human CD8 ELISA Kit (Colorimetric) NBP3-27357

Unit Size: 1 Kit

Storage of components varies. See protocol for specific instructions.

[www.novusbio.com](http://www.novusbio.com)



[technical@novusbio.com](mailto:technical@novusbio.com)

Protocols, Publications, Related Products, Reviews, Research Tools and Images at:  
[www.novusbio.com/NBP3-27357](http://www.novusbio.com/NBP3-27357)

Updated 4/9/2024 v.20.1

Earn rewards for product  
reviews and publications.

Submit a publication at [www.novusbio.com/publications](http://www.novusbio.com/publications)

Submit a review at [www.novusbio.com/reviews/destination/NBP3-27357](http://www.novusbio.com/reviews/destination/NBP3-27357)



**NBP3-27357****Human CD8 ELISA Kit (Colorimetric)****Product Information**

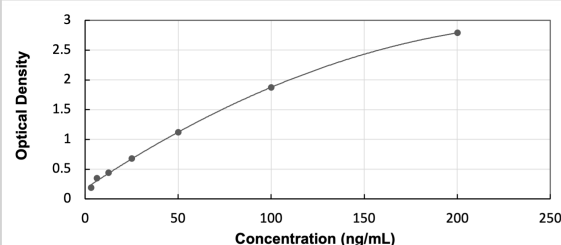
|                      |  |
|----------------------|--|
| <b>Unit Size</b>     | 1 Kit  |
| <b>Concentration</b> | Concentration is not relevant for this product. Please see the protocols for proper use of this product. |
| <b>Storage</b>       | Storage of components varies. See protocol for specific instructions.                                    |

**Product Description**

|                             |   |
|-----------------------------|---|
| <b>Description</b>          | Assay Length: 4.5 hours   |
| <b>Gene Symbol</b>          | CD8A  |
| <b>Species</b>              | Human   |
| <b>Kit Components</b>       | Pre-coated 96T strip plate, Plate sealer for 96 wells, Standard, Diluent Buffer, Detection Reagent A, Detection Reagent B, TMB Substrate, Stop Solution, Wash Buffer (30 x concentrate), Instruction manual |
| <b>Standard Curve Range</b> | 3.125 - 200 ng/mL (example only; lot dependent)   |
| <b>Sensitivity</b>          | 1.3 ng/mL (example only; lot dependent)   |
| <b>Inter Assay</b>          | %CV < 12 (example only; lot dependent)  |
| <b>Intra Assay</b>          | %CV < 10 (example only; lot dependent)  |
| <b>Assay Type</b>           | Sandwich ELISA  |
| <b>Suitable Sample Type</b> | Tissue homogenates, cell lysates, cell culture supernatants and other biological fluids   |
| <b>Sample Volume</b>        | 100 uL  |

**Images**

ELISA: Human CD8 ELISA Kit (Colorimetric) [NBP3-27357] - Standard Curve Reference





### **Novus Biologicals USA**

10730 E. Briarwood Avenue  
Centennial, CO 80112  
USA  
Phone: 303.730.1950  
Toll Free: 1.888.506.6887  
Fax: 303.730.1966  
nb-customerservice@bio-techne.com

### **Bio-Techne Canada**

21 Canmotor Ave  
Toronto, ON M8Z 4E6  
Canada  
Phone: 905.827.6400  
Toll Free: 855.668.8722  
Fax: 905.827.6402  
canada.inquires@bio-techne.com

### **Bio-Techne Ltd**

19 Barton Lane  
Abingdon Science Park  
Abingdon, OX14 3NB, United Kingdom  
Phone: (44) (0) 1235 529449  
Free Phone: 0800 37 34 15  
Fax: (44) (0) 1235 533420  
info.EMEA@bio-techne.com

### **General Contact Information**

[www.novusbio.com](http://www.novusbio.com)  
Technical Support: nb-technical@bio-techne.com  
Orders: nb-customerservice@bio-techne.com  
General: novus@novusbio.com

### **Products Related to NBP3-27357**

---

|               |                                  |
|---------------|----------------------------------|
| NBP2-36743PEP | CD8 Recombinant Protein Antigen  |
| NBP1-49045    | CD8 Antibody (53-6.7) - BSA Free |

---

### **Limitations**

This product is for research use only and is not approved for use in humans or in clinical diagnosis. ELISA Kits are guaranteed for 6 months from date of receipt.

For more information on our 100% guarantee, please visit [www.novusbio.com/guarantee](http://www.novusbio.com/guarantee)

Earn gift cards/discounts by submitting a review: [www.novusbio.com/reviews/submit/NBP3-27357](http://www.novusbio.com/reviews/submit/NBP3-27357)

Earn gift cards/discounts by submitting a publication using this product:  
[www.novusbio.com/publications](http://www.novusbio.com/publications)

