

# Product Datasheet

## Sucrose Assay Kit (Fluorometric)

### NBP3-25807

Unit Size: 96 Tests

Storage of components varies. See protocol for specific instructions.

[www.novusbio.com](http://www.novusbio.com)



[technical@novusbio.com](mailto:technical@novusbio.com)

Protocols, Publications, Related Products, Reviews, Research Tools and Images at:  
[www.novusbio.com/NBP3-25807](http://www.novusbio.com/NBP3-25807)

Updated 1/31/2024 v.20.1

Earn rewards for product  
reviews and publications.

Submit a publication at [www.novusbio.com/publications](http://www.novusbio.com/publications)

Submit a review at [www.novusbio.com/reviews/destination/NBP3-25807](http://www.novusbio.com/reviews/destination/NBP3-25807)



**NBP3-25807****Sucrose Assay Kit (Fluorometric)****Product Information**

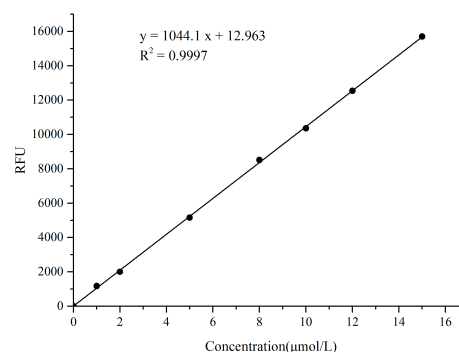
<b>Unit Size</b>	96 Tests
<b>Concentration</b>	Concentration is not relevant for this product. Please see the protocols for proper use of this product.
<b>Storage</b>	Storage of components varies. See protocol for specific instructions.

**Product Description**

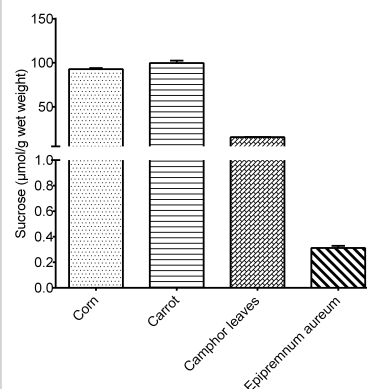
<b>Description</b>	Detection instrument: Fluorescence microplate reader (Ex/Em = 535 nm/590 nm) Assay Time: 70 min
<b>Kit Components</b>	Extraction Solution, Enzyme Reagent 1, Buffer Solution, Enzyme Reagent 2, Probe, Standard
<b>Standard Curve Range</b>	0.15 - 15 $\mu\text{mol/L}$
<b>Sensitivity</b>	0.15 $\mu\text{mol/L}$
<b>Inter Assay</b>	%CV < 6.5
<b>Intra Assay</b>	%CV < 2.3
<b>Spiking Recovery</b>	Average recovery rate: 96%
<b>Suitable Sample Type</b>	Plant tissue

**Images**

Sucrose Assay Kit (Fluorometric) [NBP3-25807] - Standard Curve Reference



Sucrose Assay Kit (Fluorometric) [NBP3-25807] - Assay Example





### **Novus Biologicals USA**

10730 E. Briarwood Avenue  
Centennial, CO 80112  
USA  
Phone: 303.730.1950  
Toll Free: 1.888.506.6887  
Fax: 303.730.1966  
nb-customerservice@bio-techne.com

### **Bio-Techne Canada**

21 Canmotor Ave  
Toronto, ON M8Z 4E6  
Canada  
Phone: 905.827.6400  
Toll Free: 855.668.8722  
Fax: 905.827.6402  
canada.inquires@bio-techne.com

### **Bio-Techne Ltd**

19 Barton Lane  
Abingdon Science Park  
Abingdon, OX14 3NB, United Kingdom  
Phone: (44) (0) 1235 529449  
Free Phone: 0800 37 34 15  
Fax: (44) (0) 1235 533420  
info.EMEA@bio-techne.com

### **General Contact Information**

[www.novusbio.com](http://www.novusbio.com)  
Technical Support: [nb-technical@bio-techne.com](mailto:nb-technical@bio-techne.com)  
Orders: [nb-customerservice@bio-techne.com](mailto:nb-customerservice@bio-techne.com)  
General: [novus@novusbio.com](mailto:novus@novusbio.com)

### **Limitations**

This product is for research use only and is not approved for use in humans or in clinical diagnosis. Kits are guaranteed for 6 months from date of receipt.

For more information on our 100% guarantee, please visit [www.novusbio.com/guarantee](http://www.novusbio.com/guarantee)

Earn gift cards/discounts by submitting a review: [www.novusbio.com/reviews/submit/NBP3-25807](http://www.novusbio.com/reviews/submit/NBP3-25807)

Earn gift cards/discounts by submitting a publication using this product:  
[www.novusbio.com/publications](http://www.novusbio.com/publications)

