

Product Datasheet

KAP1 Antibody (HL1539) - Azide and BSA Free NBP3-25540

Unit Size: 100 ul

Store at 4C short term. Aliquot and store at -20C long term. Avoid freeze-thaw cycles.

www.novusbio.com



technical@novusbio.com

Protocols, Publications, Related Products, Reviews, Research Tools and Images at:
www.novusbio.com/NBP3-25540

Updated 7/31/2025 v.20.1

Earn rewards for product
reviews and publications.

Submit a publication at www.novusbio.com/publications

Submit a review at www.novusbio.com/reviews/destination/NBP3-25540



NBP3-25540

KAP1 Antibody (HL1539) - Azide and BSA Free

Product Information

Unit Size	100 ul
Concentration	Concentrations vary lot to lot. See vial label for concentration. If unlisted please contact technical services.
Storage	Store at 4C short term. Aliquot and store at -20C long term. Avoid freeze-thaw cycles.
Clonality	Monoclonal
Clone	HL1539
Preservative	No Preservative
Isotype	IgG
Purity	Protein A purified
Buffer	PBS

Product Description

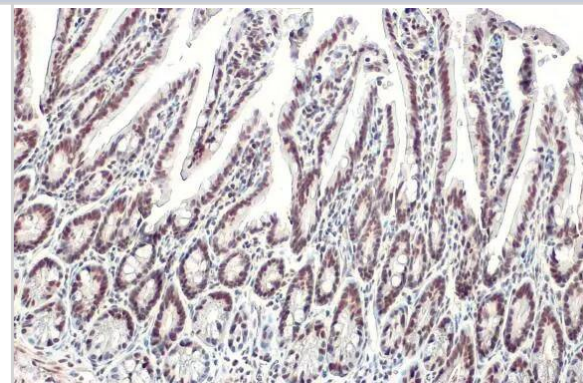
Host	Rabbit
Gene ID	10155
Gene Symbol	TRIM28
Species	Human, Mouse, Rat
Immunogen	Recombinant protein encompassing a sequence within the center region of human KAP1. The exact sequence is proprietary.

Product Application Details

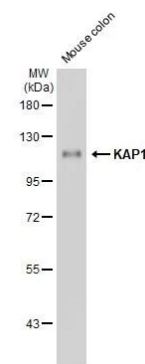
Applications	Western Blot, Immunohistochemistry-Paraffin, Immunocytochemistry/Immunofluorescence, Immunohistochemistry
Recommended Dilutions	Western Blot 1:1000-1:10000, Immunohistochemistry, Immunocytochemistry/Immunofluorescence, Immunohistochemistry-Paraffin 1:100-1:1000

Images

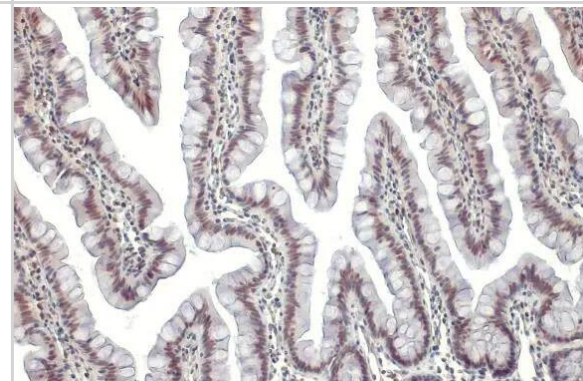
Immunohistochemistry-Paraffin: KAP1 Antibody (HL1539) - Azide and BSA Free [NBP3-25540] - KAP1 antibody [HL1539] detects KAP1 protein at nucleus by immunohistochemical analysis. Sample: Paraffin-embedded mouse intestine. KAP1 stained by KAP1 antibody [HL1539] (NBP3-25540) diluted at 1:100. Antigen Retrieval: Citrate buffer, pH 6.0, 15 min



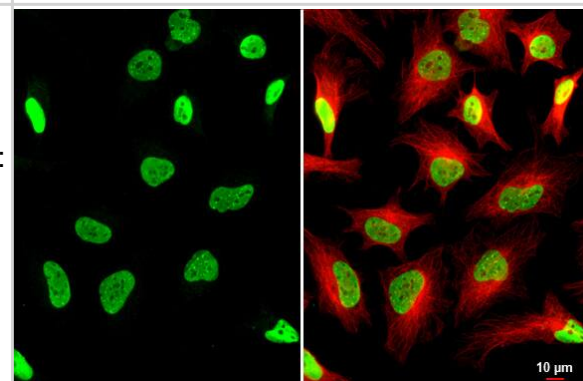
Western Blot: KAP1 Antibody (HL1539) - Azide and BSA Free [NBP3-25540] - Mouse tissue extract (50 ug) was separated by 7.5% SDS-PAGE, and the membrane was blotted with KAP1 antibody [HL1539] (NBP3-25540) diluted at 1:5000. The HRP-conjugated anti-rabbit IgG antibody was used to detect the primary antibody.



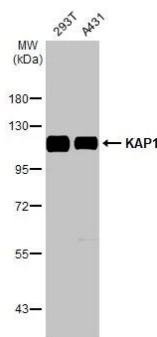
Immunohistochemistry-Paraffin: KAP1 Antibody (HL1539) - Azide and BSA Free [NBP3-25540] - KAP1 antibody [HL1539] detects KAP1 protein at nucleus by immunohistochemical analysis. Sample: Paraffin-embedded rat colon. KAP1 stained by KAP1 antibody [HL1539] (NBP3-25540) diluted at 1:100. Antigen Retrieval: Citrate buffer, pH 6.0, 15 min



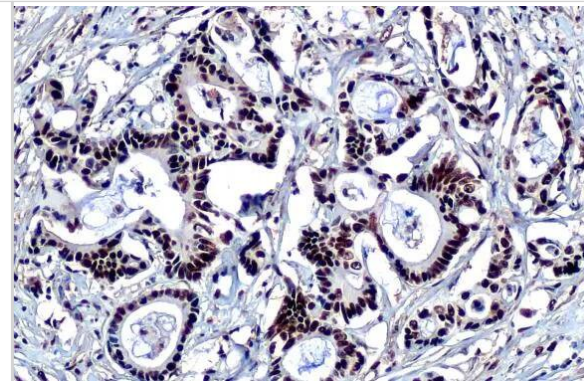
Immunocytochemistry/Immunofluorescence: KAP1 Antibody (HL1539) - Azide and BSA Free [NBP3-25540] - KAP1 antibody [HL1539] detects KAP1 protein at nucleus by immunofluorescent analysis. Sample: HeLa cells were fixed in 4% paraformaldehyde at RT for 15 min. Green: KAP1 stained by KAP1 antibody [HL1539] (NBP3-25540) diluted at 1:500. Red: alpha Tubulin, a cytoskeleton marker, stained by alpha Tubulin antibody [GT114] diluted at 1:1000.



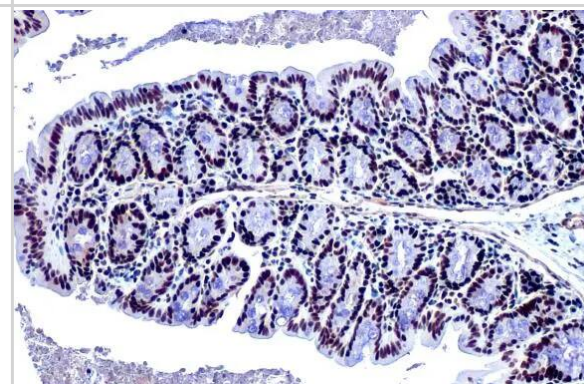
Western Blot: KAP1 Antibody (HL1539) - Azide and BSA Free [NBP3-25540] - Human tissue extract (30 ug) was separated by 7.5% SDS-PAGE, and the membrane was blotted with KAP1 antibody [HL1539] (NBP3-25540) diluted at 1:5000. The HRP-conjugated anti-rabbit IgG antibody was used to detect the primary antibody.



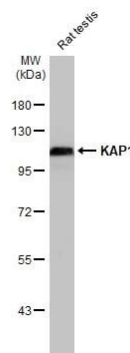
Immunohistochemistry-Paraffin: KAP1 Antibody (HL1539) - Azide and BSA Free [NBP3-25540] - KAP1 antibody [HL1539] detects KAP1 protein at nucleus by immunohistochemical analysis. Sample: Paraffin-embedded human breast carcinoma. KAP1 stained by KAP1 antibody [HL1539] (NBP3-25540) diluted at 1:100. Antigen Retrieval: Citrate buffer, pH 6.0, 15 min



Immunohistochemistry-Paraffin: KAP1 Antibody (HL1539) - Azide and BSA Free [NBP3-25540] - KAP1 antibody [HL1539] detects KAP1 protein at nucleus by immunohistochemical analysis. Sample: Paraffin-embedded mouse colon. KAP1 stained by KAP1 antibody [HL1539] (NBP3-25540) diluted at 1:100. Antigen Retrieval: Citrate buffer, pH 6.0, 15 min



Western Blot: KAP1 Antibody (HL1539) - Azide and BSA Free [NBP3-25540] - Rat tissue extract (50 ug) was separated by 7.5% SDS-PAGE, and the membrane was blotted with KAP1 antibody [HL1539] (NBP3-25540) diluted at 1:5000. The HRP-conjugated anti-rabbit IgG antibody was used to detect the primary antibody.





Novus Biologicals USA

10730 E. Briarwood Avenue
Centennial, CO 80112
USA
Phone: 303.730.1950
Toll Free: 1.888.506.6887
Fax: 303.730.1966
nb-customerservice@bio-techne.com

Bio-Techne Canada

21 Canmotor Ave
Toronto, ON M8Z 4E6
Canada
Phone: 905.827.6400
Toll Free: 855.668.8722
Fax: 905.827.6402
canada.inquires@bio-techne.com

Bio-Techne Ltd

19 Barton Lane
Abingdon Science Park
Abingdon, OX14 3NB, United Kingdom
Phone: (44) (0) 1235 529449
Free Phone: 0800 37 34 15
Fax: (44) (0) 1235 533420
info.EMEA@bio-techne.com

General Contact Information

www.novusbio.com
Technical Support: nb-technical@bio-techne.com
Orders: nb-customerservice@bio-techne.com
General: novus@novusbio.com

Products Related to NBP3-25540

HAF008	Goat anti-Rabbit IgG Secondary Antibody [HRP]
NB7160	Goat anti-Rabbit IgG (H+L) Secondary Antibody [HRP]
NBP2-24891	Rabbit IgG Isotype Control
NBP2-22889	Recombinant Human KAP1 His Protein

Limitations

This product is for research use only and is not approved for use in humans or in clinical diagnosis. Primary Antibodies are guaranteed for 1 year from date of receipt.

For more information on our 100% guarantee, please visit www.novusbio.com/guarantee

Earn gift cards/discounts by submitting a review: www.novusbio.com/reviews/submit/NBP3-25540

Earn gift cards/discounts by submitting a publication using this product:
www.novusbio.com/publications

