

Product Datasheet

Erythropoietin/EPO Antibody (HL1793) - Azide and BSA Free NBP3-25454

Unit Size: 100 ul

Store at 4C short term. Aliquot and store at -20C long term. Avoid freeze-thaw cycles.

www.novusbio.com



technical@novusbio.com

Protocols, Publications, Related Products, Reviews, Research Tools and Images at:
www.novusbio.com/NBP3-25454

Updated 7/31/2025 v.20.1

Earn rewards for product reviews and publications.

Submit a publication at www.novusbio.com/publications

Submit a review at www.novusbio.com/reviews/destination/NBP3-25454



NBP3-25454

Erythropoietin/EPO Antibody (HL1793) - Azide and BSA Free

Product Information	
Unit Size	100 ul
Concentration	Concentrations vary lot to lot. See vial label for concentration. If unlisted please contact technical services.
Storage	Store at 4C short term. Aliquot and store at -20C long term. Avoid freeze-thaw cycles.
Clonality	Monoclonal
Clone	HL1793
Preservative	No Preservative
Isotype	IgG
Purity	Protein A purified
Buffer	PBS

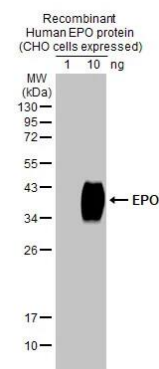
Product Description	
Host	Rabbit
Gene ID	2056
Gene Symbol	EPO
Species	Human
Immunogen	Recombinant fragment of human Erythropoietin/EPO

Product Application Details	
Applications	Western Blot, ELISA, Sandwich ELISA
Recommended Dilutions	Western Blot, ELISA, Sandwich ELISA

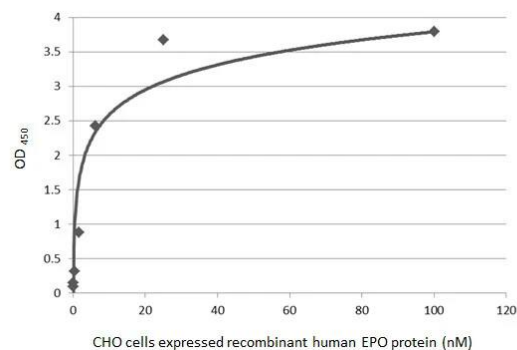


Images

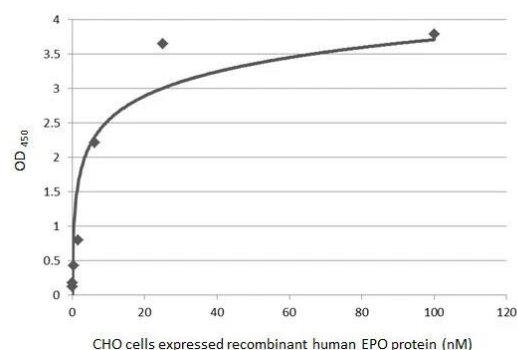
Western Blot: Erythropoietin/EPO Antibody (HL1793) - Azide and BSA Free [NBP3-25454] - Recombinant human EPO protein (CHO cells expressed) was separated by 12% SDS-PAGE, and the membrane was blotted with EPO antibody [HL1793] (NBP3-25454) diluted at 1:20000. The HRP-conjugated anti-rabbit IgG antibody was used to detect the primary antibody.



ELISA: Erythropoietin/EPO Antibody (HL1793) - Azide and BSA Free [NBP3-25454] - Sandwich ELISA detection of recombinant CHO cells expressed, full-length human EPO protein using antibodies as below. Capture: EPO antibody [HL1794] (NBP3-25455) (5 ug/mL) Detection: HRP-conjugated EPO antibody [HL1793] (NBP3-25454) (1 ug/mL) Please notice that NBP3-25454 needs to be conjugated to HRP to function as the detection antibody when paired with NBP3-25455. Please contact us for custom HRP-conjugated antibody.



ELISA: Erythropoietin/EPO Antibody (HL1793) - Azide and BSA Free [NBP3-25454] - Sandwich ELISA detection of recombinant CHO cells expressed, full-length human EPO protein using antibodies as below. Capture: EPO antibody [HL1793] (NBP3-25454) (5 ug/mL) Detection: HRP-conjugated EPO antibody [HL1794] (NBP3-25455) (1 ug/mL) Please notice that NBP3-25455 needs to be conjugated to HRP to function as the detection antibody when paired with NBP3-25454. Please contact us for custom HRP-conjugated antibody.





Novus Biologicals USA

10730 E. Briarwood Avenue
Centennial, CO 80112
USA
Phone: 303.730.1950
Toll Free: 1.888.506.6887
Fax: 303.730.1966
nb-customerservice@bio-techne.com

Bio-Techne Canada

21 Canmotor Ave
Toronto, ON M8Z 4E6
Canada
Phone: 905.827.6400
Toll Free: 855.668.8722
Fax: 905.827.6402
canada.inquires@bio-techne.com

Bio-Techne Ltd

19 Barton Lane
Abingdon Science Park
Abingdon, OX14 3NB, United Kingdom
Phone: (44) (0) 1235 529449
Free Phone: 0800 37 34 15
Fax: (44) (0) 1235 533420
info.EMEA@bio-techne.com

General Contact Information

www.novusbio.com
Technical Support: nb-technical@bio-techne.com
Orders: nb-customerservice@bio-techne.com
General: novus@novusbio.com

Products Related to NBP3-25454

HAF008	Goat anti-Rabbit IgG Secondary Antibody [HRP]
NB7160	Goat anti-Rabbit IgG (H+L) Secondary Antibody [HRP]
NBP2-24891	Rabbit IgG Isotype Control
NBP2-62447	Recombinant Porcine Erythropoietin/EPO Protein

Limitations

This product is for research use only and is not approved for use in humans or in clinical diagnosis. Primary Antibodies are guaranteed for 1 year from date of receipt.

For more information on our 100% guarantee, please visit www.novusbio.com/guarantee

Earn gift cards/discounts by submitting a review: www.novusbio.com/reviews/submit/NBP3-25454

Earn gift cards/discounts by submitting a publication using this product:
www.novusbio.com/publications

