

Product Datasheet

C-Peptide Antibody (HL1159) - Azide and BSA Free NBP3-25422

Unit Size: 100 ul

Store at 4C short term. Aliquot and store at -20C long term. Avoid freeze-thaw cycles.

www.novusbio.com



technical@novusbio.com

Protocols, Publications, Related Products, Reviews, Research Tools and Images at:
www.novusbio.com/NBP3-25422

Updated 7/31/2025 v.20.1

Earn rewards for product
reviews and publications.

Submit a publication at www.novusbio.com/publications

Submit a review at www.novusbio.com/reviews/destination/NBP3-25422



NBP3-25422

C-Peptide Antibody (HL1159) - Azide and BSA Free

Product Information

Unit Size	100 ul
Concentration	Concentrations vary lot to lot. See vial label for concentration. If unlisted please contact technical services.
Storage	Store at 4C short term. Aliquot and store at -20C long term. Avoid freeze-thaw cycles.
Clonality	Monoclonal
Clone	HL1159
Preservative	No Preservative
Isotype	IgG
Purity	Protein A purified
Buffer	PBS
Target Molecular Weight	12 kDa

Product Description

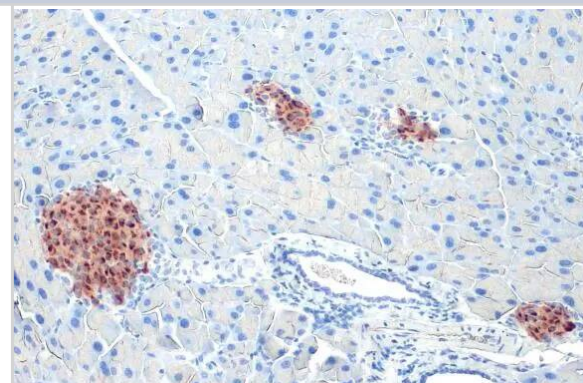
Host	Rabbit
Gene ID	3630
Gene Symbol	INS
Species	Human, Mouse, Rat
Immunogen	Synthetic peptide corresponding to human C-Peptide.

Product Application Details

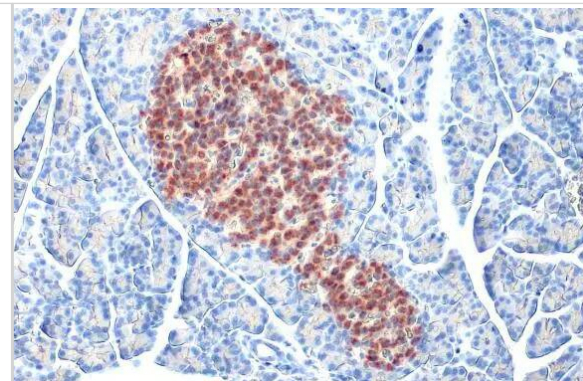
Applications	Immunohistochemistry-Paraffin, ELISA, Immunohistochemistry
Recommended Dilutions	ELISA Assay dependent, Immunohistochemistry, Immunohistochemistry-Paraffin 1:100-1:10000

Images

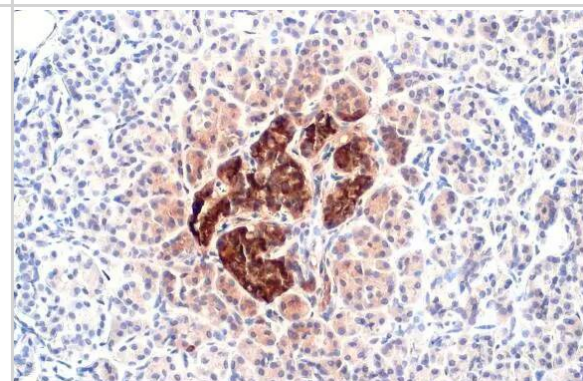
Immunohistochemistry-Paraffin: C-Peptide Antibody (HL1159) - Azide and BSA Free [NBP3-25422] - C-Peptide antibody [HL1159] detects secreted C-Peptide protein by immunohistochemical analysis. Sample: Paraffin-embedded mouse pancreas. C-Peptide stained by C-Peptide antibody [HL1159] (NBP3-25422) diluted at 1:10000. Antigen Retrieval: Citrate buffer, pH 6.0, 15 min



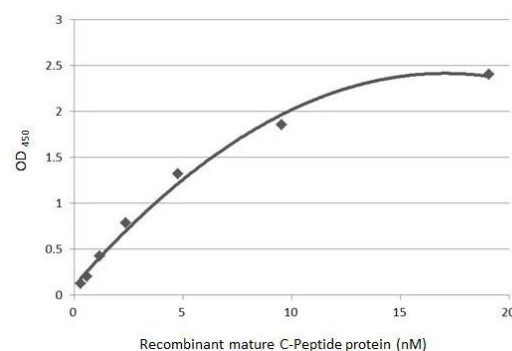
Immunohistochemistry-Paraffin: C-Peptide Antibody (HL1159) - Azide and BSA Free [NBP3-25422] - C-Peptide antibody [HL1159] detects secreted C-Peptide protein by immunohistochemical analysis. Sample: Paraffin-embedded rat pancreas. C-Peptide stained by C-Peptide antibody [HL1159] (NBP3-25422) diluted at 1:10000. Antigen Retrieval: Citrate buffer, pH 6.0, 15 min



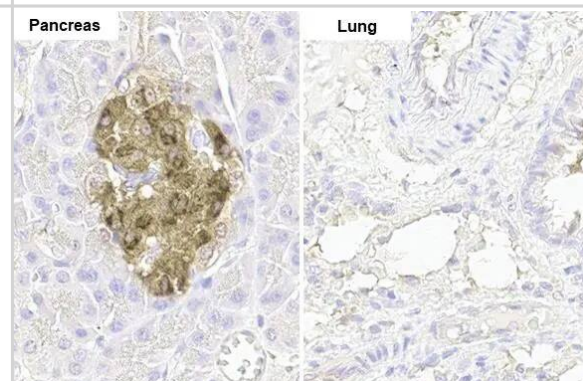
Immunohistochemistry-Paraffin: C-Peptide Antibody (HL1159) - Azide and BSA Free [NBP3-25422] - C-Peptide antibody [HL1159] detects secreted C-Peptide protein by immunohistochemical analysis. Sample: Paraffin-embedded human pancreas. C-Peptide stained by C-Peptide antibody [HL1159] (NBP3-25422) diluted at 1:10000. Antigen Retrieval: Citrate buffer, pH 6.0, 15 min



ELISA: C-Peptide Antibody (HL1159) - Azide and BSA Free [NBP3-25422] - Indirect ELISA analysis performed by coating plate with recombinant mature C-Peptide protein (19.05-0.3 nM). Coated protein was probed with C-Peptide antibody [HL1159] (NBP3-25422) (1 ug/mL). Goat anti-rabbit IgG antibody (HRP) (1:10000) was used to detect bound primary antibody.



Immunohistochemistry-Paraffin: C-Peptide Antibody (HL1159) - Azide and BSA Free [NBP3-25422] - C-Peptide antibody [HL1159] detects C-Peptide protein by immunohistochemical analysis. Sample: Paraffin-embedded rat tissues. C-Peptide stained by C-Peptide antibody [HL1159] (NBP3-25422) diluted at 1:100. Antigen Retrieval: Citrate buffer, pH 6.0, 15 min





Novus Biologicals USA

10730 E. Briarwood Avenue
Centennial, CO 80112
USA
Phone: 303.730.1950
Toll Free: 1.888.506.6887
Fax: 303.730.1966
nb-customerservice@bio-techne.com

Bio-Techne Canada

21 Canmotor Ave
Toronto, ON M8Z 4E6
Canada
Phone: 905.827.6400
Toll Free: 855.668.8722
Fax: 905.827.6402
canada.inquires@bio-techne.com

Bio-Techne Ltd

19 Barton Lane
Abingdon Science Park
Abingdon, OX14 3NB, United Kingdom
Phone: (44) (0) 1235 529449
Free Phone: 0800 37 34 15
Fax: (44) (0) 1235 533420
info.EMEA@bio-techne.com

General Contact Information

www.novusbio.com
Technical Support: nb-technical@bio-
techne.com
Orders: nb-customerservice@bio-techne.com
General: novus@novusbio.com

Products Related to NBP3-25422

HAF008	Goat anti-Rabbit IgG Secondary Antibody [HRP]
NB7160	Goat anti-Rabbit IgG (H+L) Secondary Antibody [HRP]
NBP2-24891	Rabbit IgG Isotype Control
236-EG-200	EGF [Unconjugated]

Limitations

This product is for research use only and is not approved for use in humans or in clinical diagnosis. Primary Antibodies are guaranteed for 1 year from date of receipt.

For more information on our 100% guarantee, please visit www.novusbio.com/guarantee

Earn gift cards/discounts by submitting a review: www.novusbio.com/reviews/submit/NBP3-25422

Earn gift cards/discounts by submitting a publication using this product:
www.novusbio.com/publications

