

# Product Datasheet

## Glucose 6 Phosphate Assay Kit (Colorimetric) NBP3-24492

Unit Size: 96 Tests

Storage of components varies. See protocol for specific instructions.

[www.novusbio.com](http://www.novusbio.com)



[technical@novusbio.com](mailto:technical@novusbio.com)

Protocols, Publications, Related Products, Reviews, Research Tools and Images at:  
[www.novusbio.com/NBP3-24492](http://www.novusbio.com/NBP3-24492)

Updated 12/15/2023 v.20.1

Earn rewards for product  
reviews and publications.

Submit a publication at [www.novusbio.com/publications](http://www.novusbio.com/publications)

Submit a review at [www.novusbio.com/reviews/destination/NBP3-24492](http://www.novusbio.com/reviews/destination/NBP3-24492)



**NBP3-24492****Glucose 6 Phosphate Assay Kit (Colorimetric)****Product Information**

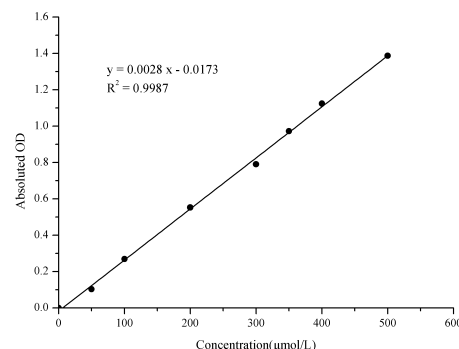
<b>Unit Size</b>	96 Tests
<b>Concentration</b>	Concentration is not relevant for this product. Please see the protocols for proper use of this product.
<b>Storage</b>	Storage of components varies. See protocol for specific instructions.

**Product Description**

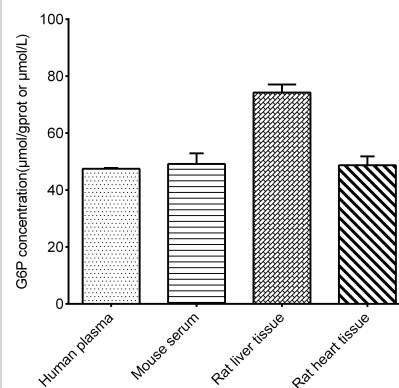
<b>Description</b>	Detection instrument: Microplate reader (450 nm) Assay time: 35 min
<b>Kit Components</b>	Reagent 1: Extracting Solution, Reagent 2: Buffer Solution, Reagent 3: Chromogenic Agent, Reagent 4: Enzyme Agent, Reagent 5: 10 mmol/L G6P Standard, Microplate, Plate Sealer
<b>Standard Curve Range</b>	5.6 - 500 $\mu\text{mol/L}$
<b>Sensitivity</b>	5.6 $\mu\text{mol/L}$
<b>Inter Assay</b>	%CV < 4.3
<b>Intra Assay</b>	%CV < 2.1
<b>Spiking Recovery</b>	Average recovery rate: 95%
<b>Suitable Sample Type</b>	Serum, plasma and animal tissue

**Images**

Glucose 6 Phosphate Assay Kit (Colorimetric) [NBP3-24492] - Standard Reference Curve



Glucose 6 Phosphate Assay Kit (Colorimetric) [NBP3-24492] - Assay Example





### **Novus Biologicals USA**

10730 E. Briarwood Avenue  
Centennial, CO 80112  
USA  
Phone: 303.730.1950  
Toll Free: 1.888.506.6887  
Fax: 303.730.1966  
nb-customerservice@bio-techne.com

### **Bio-Techne Canada**

21 Canmotor Ave  
Toronto, ON M8Z 4E6  
Canada  
Phone: 905.827.6400  
Toll Free: 855.668.8722  
Fax: 905.827.6402  
canada.inquires@bio-techne.com

### **Bio-Techne Ltd**

19 Barton Lane  
Abingdon Science Park  
Abingdon, OX14 3NB, United Kingdom  
Phone: (44) (0) 1235 529449  
Free Phone: 0800 37 34 15  
Fax: (44) (0) 1235 533420  
info.EMEA@bio-techne.com

### **General Contact Information**

[www.novusbio.com](http://www.novusbio.com)  
Technical Support: nb-technical@bio-techne.com  
Orders: nb-customerservice@bio-techne.com  
General: novus@novusbio.com

### **Limitations**

This product is for research use only and is not approved for use in humans or in clinical diagnosis. Kits are guaranteed for 6 months from date of receipt.

For more information on our 100% guarantee, please visit [www.novusbio.com/guarantee](http://www.novusbio.com/guarantee)

Earn gift cards/discounts by submitting a review: [www.novusbio.com/reviews/submit/NBP3-24492](http://www.novusbio.com/reviews/submit/NBP3-24492)

Earn gift cards/discounts by submitting a publication using this product:  
[www.novusbio.com/publications](http://www.novusbio.com/publications)

