

Product Datasheet

Glucose Assay Kit (Colorimetric)

NBP3-24489

Unit Size: 100 Assays

Storage of components varies. See protocol for specific instructions.

www.novusbio.com



technical@novusbio.com

Protocols, Publications, Related Products, Reviews, Research Tools and Images at:
www.novusbio.com/NBP3-24489

Updated 3/3/2024 v.20.1

Earn rewards for product
reviews and publications.

Submit a publication at www.novusbio.com/publications

Submit a review at www.novusbio.com/reviews/destination/NBP3-24489



NBP3-24489**Glucose Assay Kit (Colorimetric)****Product Information**

Unit Size	100 Assays
Concentration	Concentration is not relevant for this product. Please see the protocols for proper use of this product.
Storage	Storage of components varies. See protocol for specific instructions.

Product Description

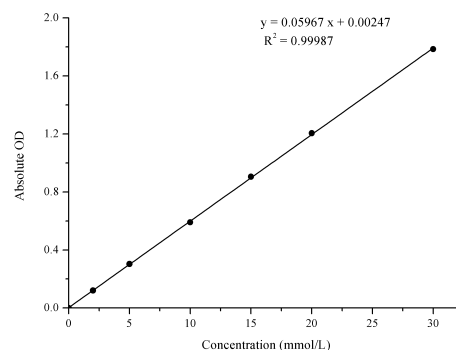
Description	Detection instrument: Spectrophotometer (505 nm) Assay time: 60 min
Species	Non-species specific
Kit Components	Reagent 1: Phenol Solution, Reagent 2: Enzyme Solution, Reagent 3: 5 mmol/L Glucose Standard
Standard Curve Range	0.05 - 30 mmol/L
Sensitivity	0.05 mmol/L
Inter Assay	%CV < 1.3
Intra Assay	%CV < 1.2
Spiking Recovery	Average recovery rate: 101%
Suitable Sample Type	Serum, plasma and whole blood

Product Application Details

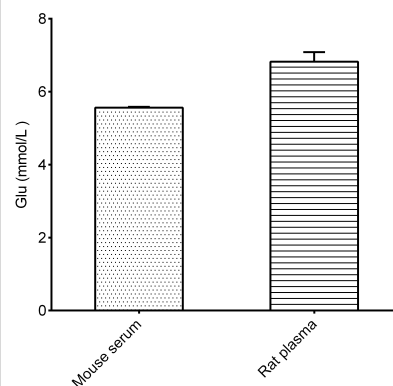
Applications	Functional
Recommended Dilutions	Functional

Images

Glucose Assay Kit (Colorimetric) [NBP3-24489] - Standard Reference Curve



Glucose Assay Kit (Colorimetric) [NBP3-24489] - Assay Example





Novus Biologicals USA

10730 E. Briarwood Avenue
Centennial, CO 80112
USA
Phone: 303.730.1950
Toll Free: 1.888.506.6887
Fax: 303.730.1966
nb-customerservice@bio-techne.com

Bio-Techne Canada

21 Canmotor Ave
Toronto, ON M8Z 4E6
Canada
Phone: 905.827.6400
Toll Free: 855.668.8722
Fax: 905.827.6402
canada.inquires@bio-techne.com

Bio-Techne Ltd

19 Barton Lane
Abingdon Science Park
Abingdon, OX14 3NB, United Kingdom
Phone: (44) (0) 1235 529449
Free Phone: 0800 37 34 15
Fax: (44) (0) 1235 533420
info.EMEA@bio-techne.com

General Contact Information

www.novusbio.com
Technical Support: nb-technical@bio-techne.com
Orders: nb-customerservice@bio-techne.com
General: novus@novusbio.com

Limitations

This product is for research use only and is not approved for use in humans or in clinical diagnosis. Kits are guaranteed for 6 months from date of receipt.

For more information on our 100% guarantee, please visit www.novusbio.com/guarantee

Earn gift cards/discounts by submitting a review: www.novusbio.com/reviews/submit/NBP3-24489

Earn gift cards/discounts by submitting a publication using this product:
www.novusbio.com/publications

