

# Product Datasheet

## Glucose Assay Kit (Colorimetric)

### NBP3-24488

Unit Size: 96 Tests

Storage of components varies. See protocol for specific instructions.

[www.novusbio.com](http://www.novusbio.com)



[technical@novusbio.com](mailto:technical@novusbio.com)

Protocols, Publications, Related Products, Reviews, Research Tools and Images at:  
[www.novusbio.com/NBP3-24488](http://www.novusbio.com/NBP3-24488)

Updated 3/3/2024 v.20.1

Earn rewards for product  
reviews and publications.

Submit a publication at [www.novusbio.com/publications](http://www.novusbio.com/publications)

Submit a review at [www.novusbio.com/reviews/destination/NBP3-24488](http://www.novusbio.com/reviews/destination/NBP3-24488)



**NBP3-24488****Glucose Assay Kit (Colorimetric)**

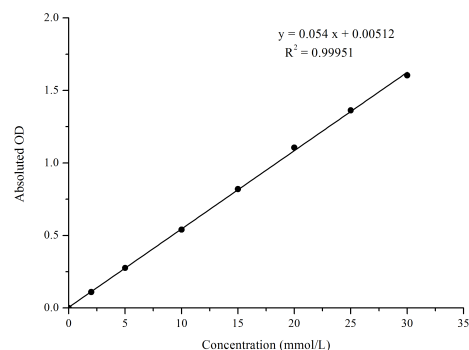
Product Information	
Unit Size	96 Tests
Concentration	Concentration is not relevant for this product. Please see the protocols for proper use of this product.
Storage	Storage of components varies. See protocol for specific instructions.

Product Description	
Description	Detection instrument: Microplate reader (500 - 510 nm) Assay time: 30 min
Species	Non-species specific
Kit Components	Reagent 1: Phenol Solution, Reagent 2: Enzyme Solution, Reagent 3: 50 mmol/L Glucose Standard, Microplate, Plate Sealer
Standard Curve Range	0.04 - 30 mmol/L
Sensitivity	0.04 mmol/L
Inter Assay	%CV < 2.3
Intra Assay	%CV < 1.9
Spiking Recovery	Average recovery rate: 100%
Suitable Sample Type	Serum, plasma and whole blood

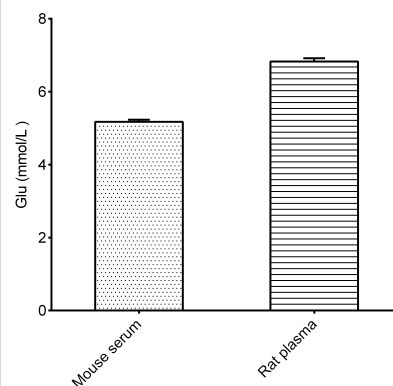
Product Application Details	
Applications	Functional
Recommended Dilutions	Functional

**Images**

Glucose Assay Kit (Colorimetric) [NBP3-24488] - Standard Reference Curve



Glucose Assay Kit (Colorimetric) [NBP3-24488] - Assay Example





### **Novus Biologicals USA**

10730 E. Briarwood Avenue  
Centennial, CO 80112  
USA  
Phone: 303.730.1950  
Toll Free: 1.888.506.6887  
Fax: 303.730.1966  
nb-customerservice@bio-techne.com

### **Bio-Techne Canada**

21 Canmotor Ave  
Toronto, ON M8Z 4E6  
Canada  
Phone: 905.827.6400  
Toll Free: 855.668.8722  
Fax: 905.827.6402  
canada.inquires@bio-techne.com

### **Bio-Techne Ltd**

19 Barton Lane  
Abingdon Science Park  
Abingdon, OX14 3NB, United Kingdom  
Phone: (44) (0) 1235 529449  
Free Phone: 0800 37 34 15  
Fax: (44) (0) 1235 533420  
info.EMEA@bio-techne.com

### **General Contact Information**

www.novusbio.com  
Technical Support: nb-technical@bio-  
techne.com  
Orders: nb-customerservice@bio-techne.com  
General: novus@novusbio.com

### **Limitations**

This product is for research use only and is not approved for use in humans or in clinical diagnosis. Kits are guaranteed for 6 months from date of receipt.

For more information on our 100% guarantee, please visit [www.novusbio.com/guarantee](http://www.novusbio.com/guarantee)

Earn gift cards/discounts by submitting a review: [www.novusbio.com/reviews/submit/NBP3-24488](http://www.novusbio.com/reviews/submit/NBP3-24488)

Earn gift cards/discounts by submitting a publication using this product:  
[www.novusbio.com/publications](http://www.novusbio.com/publications)

