

# Product Datasheet

## ATPase Activity Assay Kit (Colorimetric) NBP3-24475

Unit Size: 96 Tests

Storage of components varies. See protocol for specific instructions.

[www.novusbio.com](http://www.novusbio.com)



[technical@novusbio.com](mailto:technical@novusbio.com)

Protocols, Publications, Related Products, Reviews, Research Tools and Images at:  
[www.novusbio.com/NBP3-24475](http://www.novusbio.com/NBP3-24475)

Updated 9/29/2025 v.20.1

Earn rewards for product  
reviews and publications.

Submit a publication at [www.novusbio.com/publications](http://www.novusbio.com/publications)

Submit a review at [www.novusbio.com/reviews/destination/NBP3-24475](http://www.novusbio.com/reviews/destination/NBP3-24475)



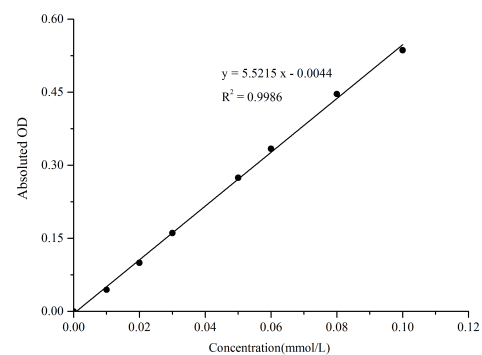
**NBP3-24475****ATPase Activity Assay Kit (Colorimetric)**

<b>Product Information</b>	
<b>Unit Size</b>	96 Tests
<b>Concentration</b>	Concentration is not relevant for this product. Please see the protocols for proper use of this product.
<b>Storage</b>	Storage of components varies. See protocol for specific instructions.
<b>Product Description</b>	
<b>Description</b>	Detection instrument: Microplate reader (630-640 nm, optimum wavelength: 640 nm) Assay time: 80 min
<b>Gene ID</b>	1769
<b>Gene Symbol</b>	DNAH8
<b>Species</b>	Non-species specific
<b>Kit Components</b>	Reagent 1: Buffer Solution, Reagent 2: Substrate, Reagent 3: Acid Reagent, Reagent 4: Chromogenic Agent A, Reagent 5: Chromogenic Agent B, Reagent 6: 10 mmol/L Standard, Microplate, Plate Sealer
<b>Standard Curve Range</b>	0.06 - 2.75 U/L
<b>Sensitivity</b>	0.06 U/L
<b>Inter Assay</b>	%CV < 5
<b>Intra Assay</b>	%CV < 4
<b>Spiking Recovery</b>	Average recovery rate: 95%
<b>Suitable Sample Type</b>	Animal tissue and cell samples
<b>Product Application Details</b>	
<b>Applications</b>	Functional
<b>Recommended Dilutions</b>	Functional

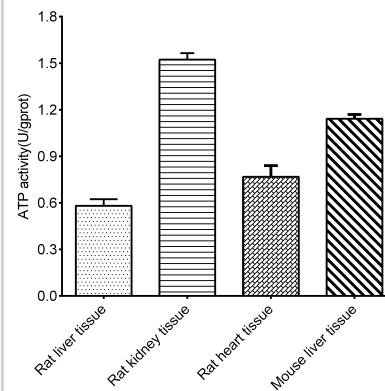


## Images

### ATPase Activity Assay Kit (Colorimetric) [NBP3-24475] - Standard Reference Curve



### ATPase Activity Assay Kit (Colorimetric) [NBP3-24475] - Assay Example





### **Novus Biologicals USA**

10730 E. Briarwood Avenue  
Centennial, CO 80112  
USA  
Phone: 303.730.1950  
Toll Free: 1.888.506.6887  
Fax: 303.730.1966  
nb-customerservice@bio-techne.com

### **Bio-Techne Canada**

21 Canmotor Ave  
Toronto, ON M8Z 4E6  
Canada  
Phone: 905.827.6400  
Toll Free: 855.668.8722  
Fax: 905.827.6402  
canada.inquires@bio-techne.com

### **Bio-Techne Ltd**

19 Barton Lane  
Abingdon Science Park  
Abingdon, OX14 3NB, United Kingdom  
Phone: (44) (0) 1235 529449  
Free Phone: 0800 37 34 15  
Fax: (44) (0) 1235 533420  
info.EMEA@bio-techne.com

### **General Contact Information**

www.novusbio.com  
Technical Support: nb-technical@bio-techne.com  
Orders: nb-customerservice@bio-techne.com  
General: novus@novusbio.com

### **Products Related to NBP3-24475**

---

NBP1-89709PEP	ATPase Recombinant Protein Antigen
NBP1-97308	GLP-1R Antibody - BSA Free
NBP1-89709	ATPase Antibody - BSA Free
MAB2006	RUNX2/CBFA1 Antibody (232902) [Unconjugated]

---

### **Limitations**

This product is for research use only and is not approved for use in humans or in clinical diagnosis. Kits are guaranteed for 6 months from date of receipt.

For more information on our 100% guarantee, please visit [www.novusbio.com/guarantee](http://www.novusbio.com/guarantee)

Earn gift cards/discounts by submitting a review: [www.novusbio.com/reviews/submit/NBP3-24475](http://www.novusbio.com/reviews/submit/NBP3-24475)

Earn gift cards/discounts by submitting a publication using this product:  
[www.novusbio.com/publications](http://www.novusbio.com/publications)

