

Product Datasheet

Tubulin alpha-1B Antibody (ARC51243) NBP3-23538

Unit Size: 100 ul

Store at -20C. Avoid freeze-thaw cycles.

www.novusbio.com



technical@novusbio.com

Protocols, Publications, Related Products, Reviews, Research Tools and Images at:
www.novusbio.com/NBP3-23538

Updated 7/31/2025 v.20.1

Earn rewards for product
reviews and publications.

Submit a publication at www.novusbio.com/publications

Submit a review at www.novusbio.com/reviews/destination/NBP3-23538



NBP3-23538

Tubulin alpha-1B Antibody (ARC51243)

Product Information

Unit Size	100 ul
Concentration	Please see the vial label for concentration. If unlisted please contact technical services.
Storage	Store at -20C. Avoid freeze-thaw cycles.
Clonality	Monoclonal
Clone	ARC51243
Preservative	0.05% Proclin 300
Isotype	IgG
Purity	Affinity purified
Buffer	PBS (pH 7.3), 50% glycerol, 0.05% BSA

Product Description

Host	Rabbit
Gene ID	10376
Gene Symbol	TUBA1B
Species	Human, Mouse, Rat
Immunogen	Recombinant fusion protein containing a sequence corresponding to amino acids 1-42 of human alpha Tubulin(NP_006073.2, P68363).

Product Application Details

Applications	Western Blot, Immunohistochemistry-Paraffin, Immunocytochemistry/ Immunofluorescence, Immunohistochemistry
Recommended Dilutions	Western Blot 1:500 - 1:2000, Immunohistochemistry 1:50 - 1:200, Immunocytochemistry/ Immunofluorescence 1:50 - 1:200, Immunohistochemistry-Paraffin 1:50 - 1:200

Images

Western Blot: Tubulin alpha-1B Antibody [NBP3-23538] - Western blot analysis of lysates from HeLa cells, using Tubulin alpha-1B Rabbit mAb at 1:1000 dilution.

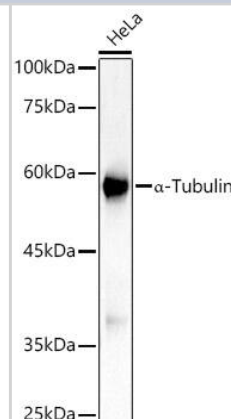
Secondary antibody: HRP Goat Anti-Rabbit IgG (H+L) at 1:10000 dilution.

Lysates/proteins: 25ug per lane.

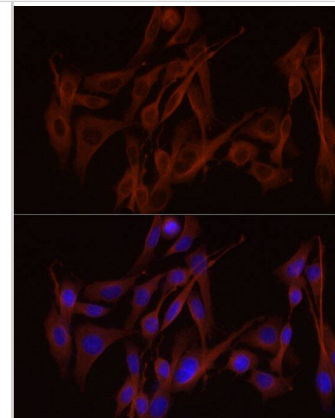
Blocking buffer: 3% nonfat dry milk in TBST.

Detection: ECL Basic Kit .

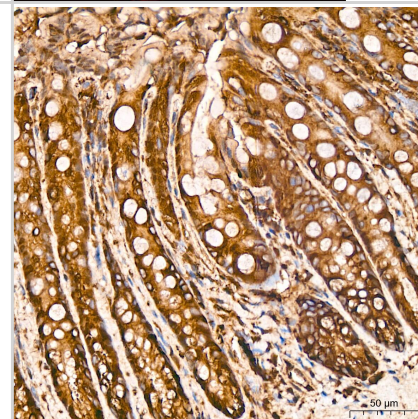
Exposure time: 0.5s.



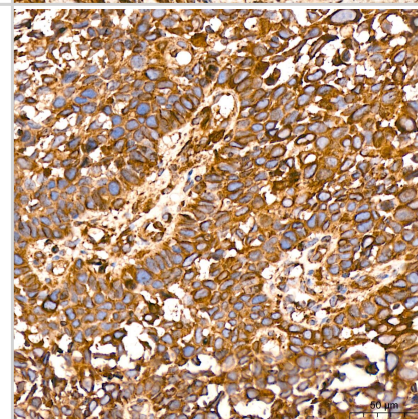
Immunocytochemistry/ Immunofluorescence: Tubulin alpha-1B Antibody (ARC51243) [NBP3-23538] - Confocal imaging of HeLa cells using α -Tubulin Rabbit mAb (Green). The cells were counterstained with RAB11A Rabbit mAb. DAPI was used for nuclear staining (blue). Objective: 60x.



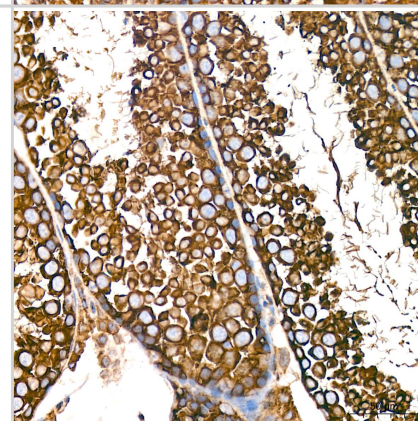
Immunohistochemistry: Tubulin alpha-1B Antibody [NBP3-23538] - Immunohistochemistry analysis of Tubulin alpha-1B in paraffin-embedded rat colon tissue using Tubulin alpha-1B Rabbit mAb at a dilution of 1:200 (40x lens). High pressure antigen retrieval was performed with 0.01 M citrate buffer (pH 6.0) prior to IHC staining.



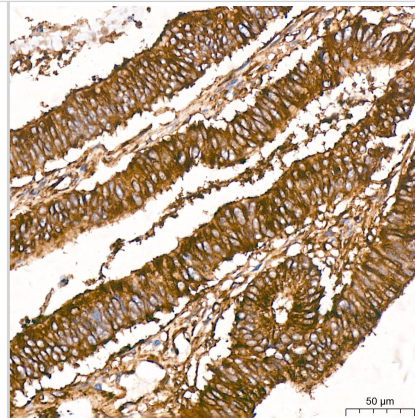
Immunohistochemistry: Tubulin alpha-1B Antibody [NBP3-23538] - Immunohistochemistry analysis of Tubulin alpha-1B in paraffin-embedded human cervix cancer tissue using Tubulin alpha-1B Rabbit mAb at a dilution of 1:200 (40x lens). High pressure antigen retrieval was performed with 0.01 M citrate buffer (pH 6.0) prior to IHC staining.



Immunohistochemistry: Tubulin alpha-1B Antibody [NBP3-23538] - Immunohistochemistry analysis of Tubulin alpha-1B in paraffin-embedded mouse testis tissue using Tubulin alpha-1B Rabbit mAb at a dilution of 1:200 (40x lens). High pressure antigen retrieval was performed with 0.01 M citrate buffer (pH 6.0) prior to IHC staining.



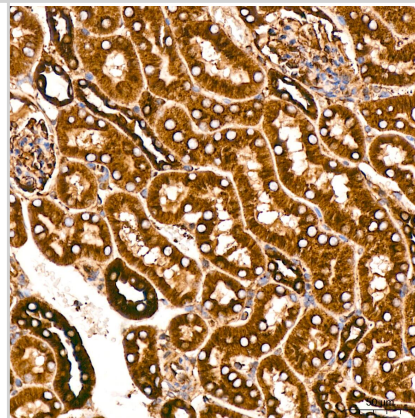
Immunohistochemistry: Tubulin alpha-1B Antibody [NBP3-23538] - Immunohistochemistry analysis of Tubulin alpha-1B in paraffin-embedded human colon carcinoma tissue using Tubulin alpha-1B Rabbit mAb at a dilution of 1:200 (40x lens).High pressure antigen retrieval was performed with 0.01 M citrate buffer (pH 6.0) prior to IHC staining.



Immunohistochemistry: Tubulin alpha-1B Antibody [NBP3-23538] - Immunohistochemistry analysis of Tubulin alpha-1B in paraffin-embedded human tonsil tissue using Tubulin alpha-1B Rabbit mAb at a dilution of 1:200 (40x lens).High pressure antigen retrieval was performed with 0.01 M citrate buffer (pH 6.0) prior to IHC staining.



Immunohistochemistry: Tubulin alpha-1B Antibody [NBP3-23538] - Immunohistochemistry analysis of Tubulin alpha-1B in paraffin-embedded mouse kidney tissue using Tubulin alpha-1B Rabbit mAb at a dilution of 1:200 (40x lens).High pressure antigen retrieval was performed with 0.01 M citrate buffer (pH 6.0) prior to IHC staining.





Novus Biologicals USA

10730 E. Briarwood Avenue
Centennial, CO 80112
USA
Phone: 303.730.1950
Toll Free: 1.888.506.6887
Fax: 303.730.1966
nb-customerservice@bio-techne.com

Bio-Techne Canada

21 Canmotor Ave
Toronto, ON M8Z 4E6
Canada
Phone: 905.827.6400
Toll Free: 855.668.8722
Fax: 905.827.6402
canada.inquires@bio-techne.com

Bio-Techne Ltd

19 Barton Lane
Abingdon Science Park
Abingdon, OX14 3NB, United Kingdom
Phone: (44) (0) 1235 529449
Free Phone: 0800 37 34 15
Fax: (44) (0) 1235 533420
info.EMEA@bio-techne.com

General Contact Information

www.novusbio.com
Technical Support: nb-technical@bio-
techne.com
Orders: nb-customerservice@bio-techne.com
General: novus@novusbio.com

Products Related to NBP3-23538

HAF008	Goat anti-Rabbit IgG Secondary Antibody [HRP]
NB7160	Goat anti-Rabbit IgG (H+L) Secondary Antibody [HRP]
NBP2-24891	Rabbit IgG Isotype Control
H00010376-P01-10ug	Recombinant Human Tubulin alpha-1B GST (N-Term) Protein

Limitations

This product is for research use only and is not approved for use in humans or in clinical diagnosis. Primary Antibodies are guaranteed for 1 year from date of receipt.

For more information on our 100% guarantee, please visit www.novusbio.com/guarantee

Earn gift cards/discounts by submitting a review: www.novusbio.com/reviews/submit/NBP3-23538

Earn gift cards/discounts by submitting a publication using this product:
www.novusbio.com/publications

