

Product Datasheet

EB2 Antibody (KT52) - BSA Free NBP3-23289

Unit Size: 0.1 ml

Store at 4C short term. Aliquot and store at -20C long term. Avoid freeze-thaw cycles.

www.novusbio.com



technical@novusbio.com

Protocols, Publications, Related Products, Reviews, Research Tools and Images at:
www.novusbio.com/NBP3-23289

Updated 3/3/2025 v.20.1

Earn rewards for product
reviews and publications.

Submit a publication at www.novusbio.com/publications

Submit a review at www.novusbio.com/reviews/destination/NBP3-23289



NBP3-23289

EB2 Antibody (KT52) - BSA Free

Product Information	
Unit Size	0.1 ml
Concentration	Please see the vial label for concentration. If unlisted please contact technical services.
Storage	Store at 4C short term. Aliquot and store at -20C long term. Avoid freeze-thaw cycles.
Clonality	Monoclonal
Clone	KT52
Preservative	0.05% Sodium Azide
Isotype	IgG2b
Purity	Protein G purified
Buffer	PBS
Target Molecular Weight	32 kDa

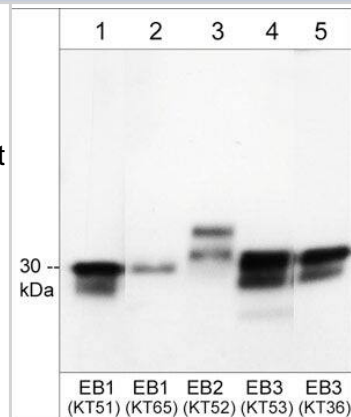
Product Description	
Description	Recommended that the undiluted antibody be aliquoted into smaller working volumes (10-30 uL/vial depending on usage).
Host	Rat
Gene ID	10982
Gene Symbol	MAPRE2
Species	Human, Mouse, Rat
Specificity/Sensitivity	The antibody detects a 36 kDa protein corresponding to the molecular mass of EB2 on SDS-PAGE immunoblots of human HeLa, mouse brain, and rat PC12 cells. The antibody also detects EB2 by immunocytochemistry in HeLa and A431 cells.
Immunogen	Clone KT52 was generated from a GST fusion protein containing human EB2. This sequence is highly conserved in rat and mouse EB2. [UniProt# Q15555]

Product Application Details	
Applications	Western Blot, Immunocytochemistry/ Immunofluorescence
Recommended Dilutions	Western Blot 1:1000, Immunocytochemistry/ Immunofluorescence 1:100

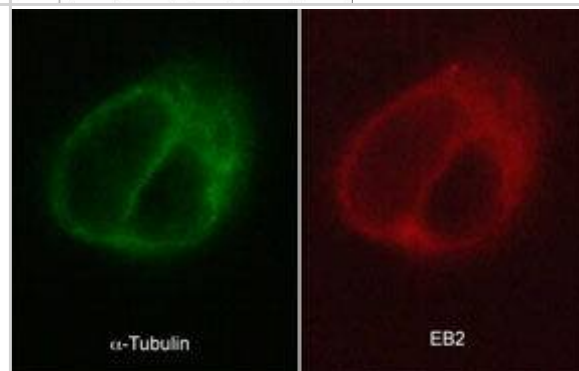


Images

Western Blot: EB2 Antibody (KT52) [NBP3-23289] - Western blot of EB proteins in mouse brain (lanes 1-5). The blot was probed with rat monoclonals anti-EB1 (lane 1), anti-EB1/2/3 (lane 2), NBP3-23289 anti-EB2 (lane 3), NBP3-23293 anti-EB3 (lane 4), and NBP3-23294 anti-EB3 (lane 5). Then the antibodies were detected using goat anti-Rat IgG Light Chain specific: HRP.



Immunocytochemistry/Immunofluorescence: EB2 Antibody (KT52) [NBP3-23289] - Immunocytochemical labeling of EB2 in paraformaldehyde-fixed and NP40-permeabilized A431 cells. The cells were dual labeled with mouse monoclonal anti-alpha Tubulin (NBP3-23258) (left) and rat monoclonal anti-EB2 (NBP3-23289) (right). The antibodies were detected using either goat anti-mouse: DyLight(R) 488 or goat anti-Rat: DyLight(R) 594.





Novus Biologicals USA

10730 E. Briarwood Avenue
Centennial, CO 80112
USA
Phone: 303.730.1950
Toll Free: 1.888.506.6887
Fax: 303.730.1966
nb-customerservice@bio-techne.com

Bio-Techne Canada

21 Canmotor Ave
Toronto, ON M8Z 4E6
Canada
Phone: 905.827.6400
Toll Free: 855.668.8722
Fax: 905.827.6402
canada.inquires@bio-techne.com

Bio-Techne Ltd

19 Barton Lane
Abingdon Science Park
Abingdon, OX14 3NB, United Kingdom
Phone: (44) (0) 1235 529449
Free Phone: 0800 37 34 15
Fax: (44) (0) 1235 533420
info.EMEA@bio-techne.com

General Contact Information

www.novusbio.com
Technical Support: nb-technical@bio-techne.com
Orders: nb-customerservice@bio-techne.com
General: novus@novusbio.com

Products Related to NBP3-23289

HAF005	Goat anti-Rat IgG Secondary Antibody [HRP]
F0105B	Goat anti-Rat IgG Secondary Antibody [Phycoerythrin]
DDXCR03	Rat IgG2b Isotype Control
NBP1-72455-100ug	Recombinant Human EB2 His Protein

Limitations

This product is for research use only and is not approved for use in humans or in clinical diagnosis. Primary Antibodies are guaranteed for 1 year from date of receipt.

For more information on our 100% guarantee, please visit www.novusbio.com/guarantee

Earn gift cards/discounts by submitting a review: www.novusbio.com/reviews/submit/NBP3-23289

Earn gift cards/discounts by submitting a publication using this product:
www.novusbio.com/publications

