

# Product Datasheet

## Sodium Potassium ATPase Alpha 2 Antibody (SR1026) NBP3-22392-100ul

Unit Size: 100 ul

Store at 4C short term. Aliquot and store at -20C long term. Avoid freeze-thaw cycles.

[www.novusbio.com](http://www.novusbio.com)



[technical@novusbio.com](mailto:technical@novusbio.com)

Protocols, Publications, Related Products, Reviews, Research Tools and Images at:  
[www.novusbio.com/NBP3-22392](http://www.novusbio.com/NBP3-22392)

Updated 4/15/2024 v.20.1

Earn rewards for product  
reviews and publications.

Submit a publication at [www.novusbio.com/publications](http://www.novusbio.com/publications)

Submit a review at [www.novusbio.com/reviews/destination/NBP3-22392](http://www.novusbio.com/reviews/destination/NBP3-22392)



**NBP3-22392-100ul**

Sodium Potassium ATPase Alpha 2 Antibody (SR1026)

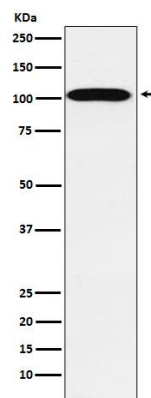
| Product Information     |   |
|-------------------------|---|
| Unit Size               | 100 ul  |
| Concentration           | Please see the vial label for concentration. If unlisted please contact technical services. |
| Storage                 | Store at 4C short term. Aliquot and store at -20C long term. Avoid freeze-thaw cycles.      |
| Clonality               | Monoclonal  |
| Clone                   | SR1026  |
| Preservative            | 0.02% Sodium Azide  |
| Isotype                 | IgG   |
| Purity                  | Affinity purified   |
| Buffer                  | PBS, pH 7.4, 150mM NaCl, 50% glycerol.  |
| Target Molecular Weight | 102 kDa   |

| Product Description     |  |
|-------------------------|--|
| Host                    | Rabbit   |
| Gene Symbol             | ATP1A2   |
| Species                 | Human, Mouse, Rat  |
| Specificity/Sensitivity | Detects endogenous levels of total Sodium Potassium ATPase Alpha 2                           |
| Immunogen               | A synthesized peptide derived from human Sodium Potassium ATPase Alpha 2 (Uniprot #: P50993) |

| Product Application Details |                           |
|-----------------------------|---------------------------|
| Applications                | Western Blot              |
| Recommended Dilutions       | Western Blot 1:500-1:2000 |

**Images**

Western Blot: Sodium Potassium ATPase Alpha 2 Antibody (SR1026) [NBP3-22392] - Western blot analysis using NBP3-22392 in Human fetal heart lysate.





### **Novus Biologicals USA**

10730 E. Briarwood Avenue  
Centennial, CO 80112  
USA  
Phone: 303.730.1950  
Toll Free: 1.888.506.6887  
Fax: 303.730.1966  
nb-customerservice@bio-techne.com

### **Bio-Techne Canada**

21 Canmotor Ave  
Toronto, ON M8Z 4E6  
Canada  
Phone: 905.827.6400  
Toll Free: 855.668.8722  
Fax: 905.827.6402  
canada.inquires@bio-techne.com

### **Bio-Techne Ltd**

19 Barton Lane  
Abingdon Science Park  
Abingdon, OX14 3NB, United Kingdom  
Phone: (44) (0) 1235 529449  
Free Phone: 0800 37 34 15  
Fax: (44) (0) 1235 533420  
info.EMEA@bio-techne.com

### **General Contact Information**

www.novusbio.com  
Technical Support: nb-technical@bio-techne.com  
Orders: nb-customerservice@bio-techne.com  
General: novus@novusbio.com

### **Products Related to NBP3-22392-100ul**

---

|            |   |
|------------|---|
| HAF008     | Goat anti-Rabbit IgG Secondary Antibody [HRP]         |
| NB7160     | Goat anti-Rabbit IgG (H+L) Secondary Antibody [HRP]   |
| NBP2-24891 | Rabbit IgG Isotype Control                            |
| NBL1-07808 | Sodium Potassium ATPase Alpha 2 Overexpression Lysate |

---

### **Limitations**

This product is for research use only and is not approved for use in humans or in clinical diagnosis. Primary Antibodies are guaranteed for 1 year from date of receipt.

For more information on our 100% guarantee, please visit [www.novusbio.com/guarantee](http://www.novusbio.com/guarantee)

Earn gift cards/discounts by submitting a review: [www.novusbio.com/reviews/submit/NBP3-22392](http://www.novusbio.com/reviews/submit/NBP3-22392)

Earn gift cards/discounts by submitting a publication using this product:  
[www.novusbio.com/publications](http://www.novusbio.com/publications)

