

Product Datasheet

GLP/EHMT1 Antibody NBP3-18679-100ul

Unit Size: 100 ul

Store at -20C short term. Aliquot and store at -80C long term. Avoid freeze-thaw cycles.

www.novusbio.com



technical@novusbio.com

Protocols, Publications, Related Products, Reviews, Research Tools and Images at:
www.novusbio.com/NBP3-18679

Updated 4/21/2024 v.20.1

Earn rewards for product
reviews and publications.

Submit a publication at www.novusbio.com/publications

Submit a review at www.novusbio.com/reviews/destination/NBP3-18679



NBP3-18679-100ul

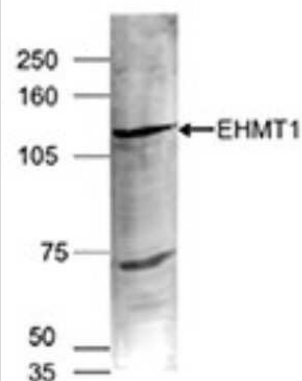
GLP/EHMT1 Antibody

Product Information	
Unit Size	100 ul
Concentration	Please see the vial label for concentration. If unlisted please contact technical services.
Storage	Store at -20C short term. Aliquot and store at -80C long term. Avoid freeze-thaw cycles.
Clonality	Polyclonal
Preservative	0.05% Sodium Azide
Purity	Whole Antiserum
Buffer	Whole antiserum
Product Description	
Host	Rabbit
Gene Symbol	EHMT1
Species	Human, Mouse
Immunogen	Polyclonal antibody raised in rabbit against mouse GLP/EHMT1 (euchromatic histone-lysine N-methyltransferase 1), using three KLH-conjugated synthetic peptides containing a sequence from the central part of the protein (1).
Product Application Details	
Applications	Western Blot, ELISA, Immunocytochemistry/ Immunofluorescence, Immunohistochemistry, Immunohistochemistry-Paraffin
Recommended Dilutions	Western Blot 1:500, ELISA 1:100-1:200, Immunohistochemistry 1:50 - 1:200, Immunocytochemistry/ Immunofluorescence 0.25-2 ug/ml, Immunohistochemistry-Paraffin 1:50 - 1:200

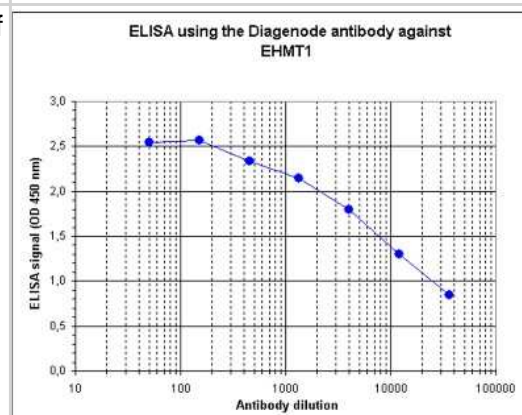


Images

Western Blot: GLP/EHMT1 Antibody [NBP3-18679] - Figure 2. Western blot analysis using the Diagenode antibody directed against EHMT1. Nuclear extracts of HeLa cells (40 ug) were analysed by Western blot using the antibody against EHMT1 diluted 1:1,000 in TBS-Tween containing 5% skimmed milk. The position of the protein of interest (expected size: 120 kDa) is indicated on the right; the marker (in kDa) is shown on the left. The smaller fragment of approximately 92 kDa may represent a splicing variant.



ELISA: GLP/EHMT1 Antibody [NBP3-18679] - Figure 1. Determination of the titer. To determine the titer, an ELISA was performed using a serial dilution of the antibody directed against human EHMT1. The wells were coated with the peptide used for immunisation of the rabbit. By plotting the absorbance against the antibody dilution (Figure 1), the titer of the antibody was estimated to be 1:2,000.





Novus Biologicals USA

10730 E. Briarwood Avenue
Centennial, CO 80112
USA
Phone: 303.730.1950
Toll Free: 1.888.506.6887
Fax: 303.730.1966
nb-customerservice@bio-techne.com

Bio-Techne Canada

21 Canmotor Ave
Toronto, ON M8Z 4E6
Canada
Phone: 905.827.6400
Toll Free: 855.668.8722
Fax: 905.827.6402
canada.inquires@bio-techne.com

Bio-Techne Ltd

19 Barton Lane
Abingdon Science Park
Abingdon, OX14 3NB, United Kingdom
Phone: (44) (0) 1235 529449
Free Phone: 0800 37 34 15
Fax: (44) (0) 1235 533420
info.EMEA@bio-techne.com

General Contact Information

www.novusbio.com
Technical Support: nb-technical@bio-techne.com
Orders: nb-customerservice@bio-techne.com
General: novus@novusbio.com

Products Related to NBP3-18679-100ul

HAF008	Goat anti-Rabbit IgG Secondary Antibody [HRP]
NB7160	Goat anti-Rabbit IgG (H+L) Secondary Antibody [HRP]
H00079813-P01-2ug	Recombinant Human GLP/EHMT1 GST (N-Term) Protein
H00079813-Q01-10ug	Recombinant Human GLP/EHMT1 GST (N-Term) Protein

Limitations

This product is for research use only and is not approved for use in humans or in clinical diagnosis. Primary Antibodies are guaranteed for 1 year from date of receipt.

For more information on our 100% guarantee, please visit www.novusbio.com/guarantee

Earn gift cards/discounts by submitting a review: www.novusbio.com/reviews/submit/NBP3-18679

Earn gift cards/discounts by submitting a publication using this product:
www.novusbio.com/publications

