

Product Datasheet

ASH2L Antibody NBP3-18639-100ul

Unit Size: 100 ul

Store at -20C short term. Aliquot and store at -80C long term. Avoid freeze-thaw cycles.

www.novusbio.com



technical@novusbio.com

Protocols, Publications, Related Products, Reviews, Research Tools and Images at:
www.novusbio.com/NBP3-18639

Updated 4/21/2024 v.20.1

Earn rewards for product
reviews and publications.

Submit a publication at www.novusbio.com/publications

Submit a review at www.novusbio.com/reviews/destination/NBP3-18639



NBP3-18639-100ul**ASH2L Antibody****Product Information**

Unit Size	100 ul
Concentration	Please see the vial label for concentration. If unlisted please contact technical services.
Storage	Store at -20C short term. Aliquot and store at -80C long term. Avoid freeze-thaw cycles.
Clonality	Polyclonal
Preservative	0.05% Sodium Azide
Purity	Whole Antiserum
Buffer	Whole antiserum

Product Description

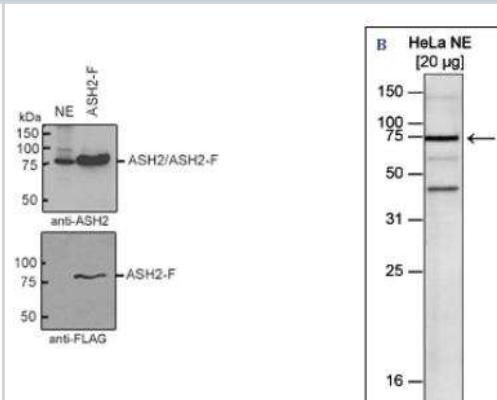
Host	Rabbit
Gene Symbol	ASH2L
Species	Human
Immunogen	Polyclonal antibody raised in rabbit against human ASH2L (absent, small, or homeotic 2), using a recombinant protein.

Product Application Details

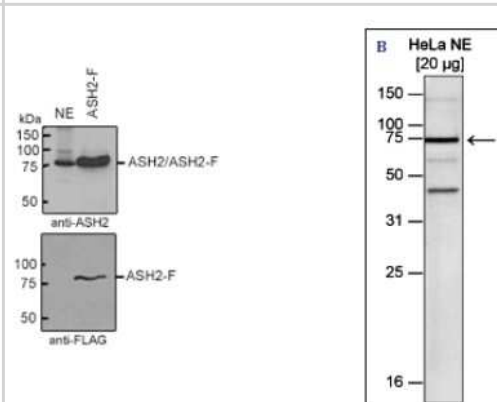
Applications	Western Blot
Recommended Dilutions	Western Blot 1:1000

Images

Western Blot: ASH2L Antibody [NBP3-18639] - Figure 1. Western blot analysis using the antibody directed against ASH2L Figure 1A: Western blot was performed using the antibody against hASH2L diluted 1:1,000 in TBS-Tween containing 5% skimmed milk on nuclear extracts from HeLa cells (upper panel: lane 1) and ectopically expressed FLAG-tagged ASH2L (ASH2L-F, upper panel: lane 2). The lower panel shows the same western blot with an anti-FLAG antibody. The molecular weight marker is shown on the left.



Western Blot: ASH2L Antibody [NBP3-18639] - Figure 1. Western blot analysis using the antibody directed against ASH2L Figure 1B: Western blot was performed using nuclear extracts from HeLa cells (HeLa NE, 20 ug) with the antibody against ASH2L diluted 1:1,000 in TBS-Tween containing 5% skimmed milk. The molecular weight marker (in kDa) is shown on the left; the location of the protein of interest is indicated on the right.





Novus Biologicals USA

10730 E. Briarwood Avenue
Centennial, CO 80112
USA
Phone: 303.730.1950
Toll Free: 1.888.506.6887
Fax: 303.730.1966
nb-customerservice@bio-techne.com

Bio-Techne Canada

21 Canmotor Ave
Toronto, ON M8Z 4E6
Canada
Phone: 905.827.6400
Toll Free: 855.668.8722
Fax: 905.827.6402
canada.inquires@bio-techne.com

Bio-Techne Ltd

19 Barton Lane
Abingdon Science Park
Abingdon, OX14 3NB, United Kingdom
Phone: (44) (0) 1235 529449
Free Phone: 0800 37 34 15
Fax: (44) (0) 1235 533420
info.EMEA@bio-techne.com

General Contact Information

www.novusbio.com
Technical Support: nb-technical@bio-techne.com
Orders: nb-customerservice@bio-techne.com
General: novus@novusbio.com

Products Related to NBP3-18639-100ul

HAF008	Goat anti-Rabbit IgG Secondary Antibody [HRP]
NB7160	Goat anti-Rabbit IgG (H+L) Secondary Antibody [HRP]
H00009070-Q01-10ug	Recombinant Human ASH2L GST (N-Term) Protein
NBL1-07765	ASH2L Overexpression Lysate

Limitations

This product is for research use only and is not approved for use in humans or in clinical diagnosis. Primary Antibodies are guaranteed for 1 year from date of receipt.

For more information on our 100% guarantee, please visit www.novusbio.com/guarantee

Earn gift cards/discounts by submitting a review: www.novusbio.com/reviews/submit/NBP3-18639

Earn gift cards/discounts by submitting a publication using this product:
www.novusbio.com/publications

