

Product Datasheet

Methionine Aminopeptidase 1/METAP1 Antibody - BSA Free NBP3-18418

Unit Size: 100 ug

Store at 4C. Do not freeze.

www.novusbio.com



technical@novusbio.com

Protocols, Publications, Related Products, Reviews, Research Tools and Images at:
www.novusbio.com/NBP3-18418

Updated 3/18/2025 v.20.1

Earn rewards for product
reviews and publications.

Submit a publication at www.novusbio.com/publications

Submit a review at www.novusbio.com/reviews/destination/NBP3-18418



NBP3-18418

Methionine Aminopeptidase 1/METAP1 Antibody - BSA Free

Product Information	
Unit Size	100 ug
Concentration	1 mg/ml
Storage	Store at 4C. Do not freeze.
Clonality	Polyclonal
Preservative	0.09% Sodium Azide
Isotype	IgG
Purity	Affinity purified
Buffer	Tris-citrate/phosphate pH 7 -8.

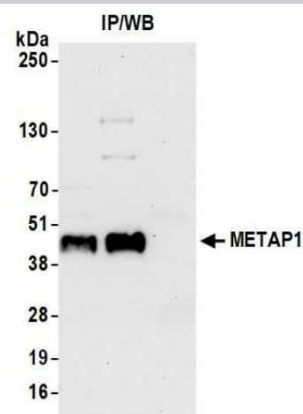
Product Description	
Host	Rabbit
Gene ID	23173
Gene Symbol	METAP1
Species	Human, Mouse
Immunogen	Recognizes region between residues Between Between 336 and 386..

Product Application Details	
Applications	Western Blot, Immunoprecipitation
Recommended Dilutions	Western Blot 1:2000 - 1:10000, Immunoprecipitation 20 ug/mg lysate

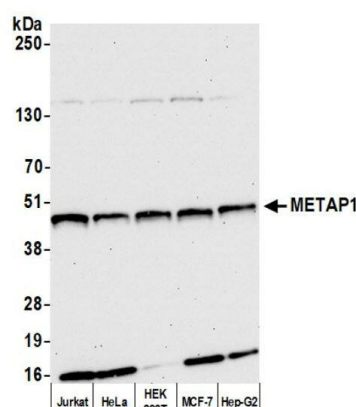


Images

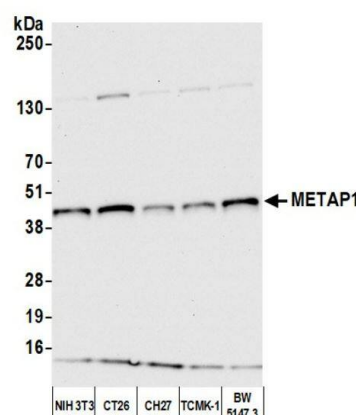
Immunoprecipitation-Methionine Aminopeptidase 1/METAP1 Antibody-NBP3-18418-Detection of human METAP1 by western blot of immunoprecipitates. Samples: Whole cell lysate (1.0 mg per IP reaction; 20% of IP loaded) from HEK293T cells prepared using NETN lysis buffer. Antibodies: Affinity purified rabbit anti-METAP1 antibody used for IP at 2 ug per reaction. METAP1 was also immunoprecipitated by rabbit anti-METAP1 antibody. For blotting immunoprecipitated METAP1, was used at 0.1 mg/ml. Detection: Chemiluminescence with an exposure time of 10 seconds.



Western Blot-Methionine Aminopeptidase 1/METAP1 Antibody-NBP3-18418-Detection of human METAP1 by western blot. Samples: Whole cell lysate (10 ug) from Jurkat, HeLa, HEK293T, MCF-7, and Hep-G2 cells prepared using NETN lysis buffer. Antibody: Affinity purified rabbit anti-METAP1 antibody used for WB at 0.1 mg/ml. Detection: Chemiluminescence with an exposure time of 30 seconds.



Western Blot-Methionine Aminopeptidase 1/METAP1 Antibody-NBP3-18418-Detection of mouse METAP1 by western blot. Samples: Whole cell lysate (10 ug) from NIH 3T3, CT26, CH27, TCMK-1, and BW5147.3 cells prepared using NETN lysis buffer. Antibody: Affinity purified rabbit anti-METAP1 antibody used for WB at 0.1 mg/ml. Detection: Chemiluminescence with an exposure time of 10 seconds.





Novus Biologicals USA

10730 E. Briarwood Avenue
Centennial, CO 80112
USA
Phone: 303.730.1950
Toll Free: 1.888.506.6887
Fax: 303.730.1966
nb-customerservice@bio-techne.com

Bio-Techne Canada

21 Canmotor Ave
Toronto, ON M8Z 4E6
Canada
Phone: 905.827.6400
Toll Free: 855.668.8722
Fax: 905.827.6402
canada.inquires@bio-techne.com

Bio-Techne Ltd

19 Barton Lane
Abingdon Science Park
Abingdon, OX14 3NB, United Kingdom
Phone: (44) (0) 1235 529449
Free Phone: 0800 37 34 15
Fax: (44) (0) 1235 533420
info.EMEA@bio-techne.com

General Contact Information

www.novusbio.com
Technical Support: nb-technical@bio-techne.com
Orders: nb-customerservice@bio-techne.com
General: novus@novusbio.com

Products Related to NBP3-18418

HAF008	Goat anti-Rabbit IgG Secondary Antibody [HRP]
NB7160	Goat anti-Rabbit IgG (H+L) Secondary Antibody [HRP]
NBP2-24891	Rabbit IgG Isotype Control
NBP1-78803-100ug	Recombinant E. coli Methionine Aminopeptidase 1/METAP1 His Protein

Limitations

This product is for research use only and is not approved for use in humans or in clinical diagnosis. Primary Antibodies are guaranteed for 1 year from date of receipt.

For more information on our 100% guarantee, please visit www.novusbio.com/guarantee

Earn gift cards/discounts by submitting a review: www.novusbio.com/reviews/submit/NBP3-18418

Earn gift cards/discounts by submitting a publication using this product:
www.novusbio.com/publications

