

# Product Datasheet

## IRGM Antibody NBP3-18254

Unit Size: 100 ug

Store at -20C. Avoid freeze-thaw cycles.

[www.novusbio.com](http://www.novusbio.com)



[technical@novusbio.com](mailto:technical@novusbio.com)

Protocols, Publications, Related Products, Reviews, Research Tools and Images at:  
[www.novusbio.com/NBP3-18254](http://www.novusbio.com/NBP3-18254)

Updated 1/15/2025 v.20.1

Earn rewards for product  
reviews and publications.

Submit a publication at [www.novusbio.com/publications](http://www.novusbio.com/publications)

Submit a review at [www.novusbio.com/reviews/destination/NBP3-18254](http://www.novusbio.com/reviews/destination/NBP3-18254)



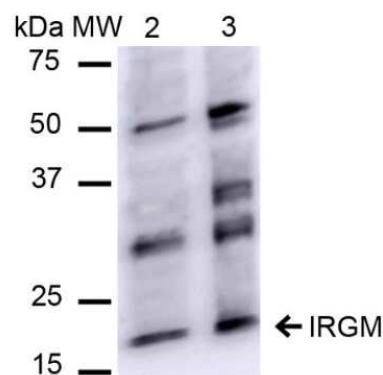
**NBP3-18254****IRGM Antibody**

<b>Product Information</b>	
<b>Unit Size</b>	100 ug
<b>Concentration</b>	1 mg/ml
<b>Storage</b>	Store at -20C. Avoid freeze-thaw cycles.
<b>Clonality</b>	Polyclonal
<b>Preservative</b>	0.09% Sodium Azide
<b>Isotype</b>	IgG
<b>Purity</b>	Peptide affinity purified
<b>Buffer</b>	PBS, 50% glycerol
<b>Product Description</b>	
<b>Host</b>	Rabbit
<b>Gene ID</b>	345611
<b>Gene Symbol</b>	IRGM
<b>Species</b>	Human
<b>Immunogen</b>	Synthetic peptide from the N-terminal of Human IRGM
<b>Product Application Details</b>	
<b>Applications</b>	Western Blot, Immunocytochemistry/ Immunofluorescence, Immunohistochemistry
<b>Recommended Dilutions</b>	Western Blot 1:1000, Immunohistochemistry 1:50, Immunocytochemistry/ Immunofluorescence 1:100
<b>Application Notes</b>	Optimal dilutions for assays should be determined by the user.

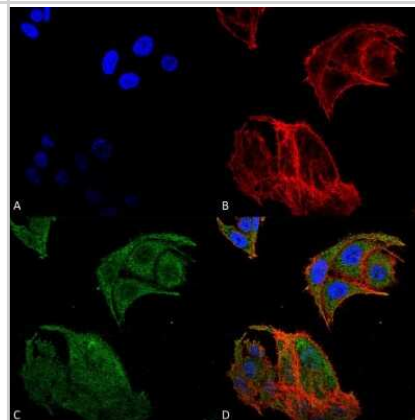


## Images

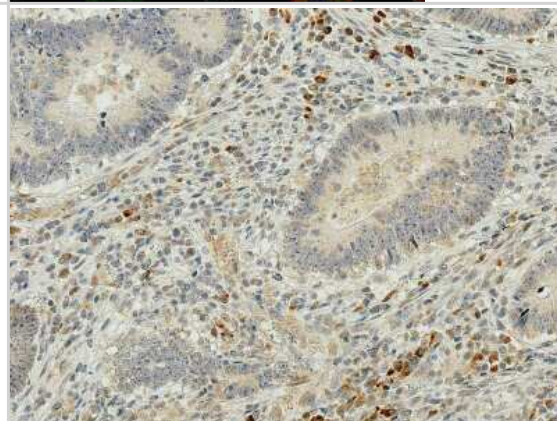
**Western Blot: IRGM Antibody [NBP3-18254]** - Western blot analysis of Human HeLa and HEK293Trap cell lysates showing detection of ~20.1 kDa IRGM protein using Rabbit Anti-IRGM Polyclonal Antibody (NBP3-18254). Lane 1: Molecular Weight Ladder (MW). Lane 2: HeLa cell lysates. Lane 3: 293Trap cell lysates. Load: 15 ug. Block: 5% Skim Milk in 1X TBST. Primary Antibody: Rabbit Anti-IRGM Polyclonal Antibody (NBP3-18254) at 1:1000 for 2 hours at RT. Secondary Antibody: Goat Anti-Rabbit IgG: HRP at 1:1000 for 60 min at RT. Color Development: ECL solution for 6 min in RT. Predicted/Observed Size: ~20.1 kDa.



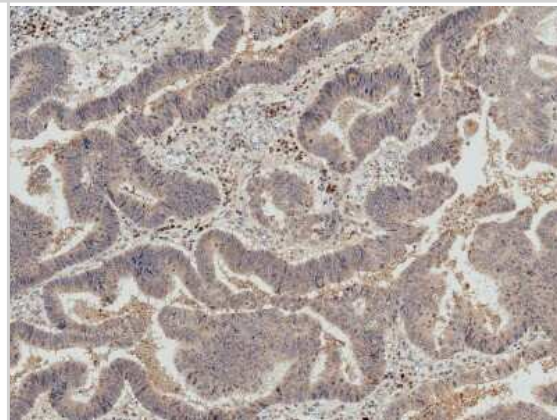
**Immunocytochemistry/Immunofluorescence: IRGM Antibody [NBP3-18254]** - Immunocytochemistry/Immunofluorescence analysis using Rabbit Anti-IRGM Polyclonal Antibody (NBP3-18254). Tissue: Colon carcinoma cell line (RKO). Species: Human. Fixation: 4% Formaldehyde for 15 min at RT. Primary Antibody: Rabbit Anti-IRGM Polyclonal Antibody (NBP3-18254) at 1:100 for 60 min at RT. Secondary Antibody: Goat Anti-Rabbit ATTO 488 at 1:100 for 60 min at RT. Counterstain: Phalloidin Texas Red F-Actin stain; DAPI (blue) nuclear stain at 1:1000, 1:5000 for 60 min at RT, 5 min at RT. Localization: Cell Membrane, Cytoplasmic Vesicle, Phagosome Membrane, Autophagosome Membrane. Magnification: 60X. (A) DAPI nuclear stain. (B) Phalloidin Texas Red F-Actin stain. (C) IRGM Antibody. (D) Composite.



**Immunohistochemistry: IRGM Antibody [NBP3-18254]** - Immunohistochemistry analysis using Rabbit Anti-IRGM Polyclonal Antibody (NBP3-18254). Tissue: Colon Cancer. Species: Human. Fixation: Formalin Fixed Paraffin-Embedded. Primary Antibody: Rabbit Anti-IRGM Polyclonal Antibody (NBP3-18254) at 1:50 for 30 min at RT. Counterstain: Hematoxylin. Magnification: 20X. HRP-DAB Detection.



**Immunohistochemistry: IRGM Antibody [NBP3-18254]** - Immunohistochemistry analysis using Rabbit Anti-IRGM Polyclonal Antibody (NBP3-18254). Tissue: Colon Cancer. Species: Human. Fixation: Formalin Fixed Paraffin-Embedded. Primary Antibody: Rabbit Anti-IRGM Polyclonal Antibody (NBP3-18254) at 1:50 for 30 min at RT. Counterstain: Hematoxylin. Magnification: 10X. HRP-DAB Detection.





### **Novus Biologicals USA**

10730 E. Briarwood Avenue  
Centennial, CO 80112  
USA  
Phone: 303.730.1950  
Toll Free: 1.888.506.6887  
Fax: 303.730.1966  
nb-customerservice@bio-techne.com

### **Bio-Techne Canada**

21 Canmotor Ave  
Toronto, ON M8Z 4E6  
Canada  
Phone: 905.827.6400  
Toll Free: 855.668.8722  
Fax: 905.827.6402  
canada.inquires@bio-techne.com

### **Bio-Techne Ltd**

19 Barton Lane  
Abingdon Science Park  
Abingdon, OX14 3NB, United Kingdom  
Phone: (44) (0) 1235 529449  
Free Phone: 0800 37 34 15  
Fax: (44) (0) 1235 533420  
info.EMEA@bio-techne.com

### **General Contact Information**

[www.novusbio.com](http://www.novusbio.com)  
Technical Support: nb-technical@bio-techne.com  
Orders: nb-customerservice@bio-techne.com  
General: novus@novusbio.com

### **Limitations**

This product is for research use only and is not approved for use in humans or in clinical diagnosis. Primary Antibodies are guaranteed for 1 year from date of receipt.

For more information on our 100% guarantee, please visit [www.novusbio.com/guarantee](http://www.novusbio.com/guarantee)

Earn gift cards/discounts by submitting a review: [www.novusbio.com/reviews/submit/NBP3-18254](http://www.novusbio.com/reviews/submit/NBP3-18254)

Earn gift cards/discounts by submitting a publication using this product:  
[www.novusbio.com/publications](http://www.novusbio.com/publications)

