

Product Datasheet

Human BACH1 ELISA Kit (Colorimetric) NBP3-18220

Unit Size: 1 Kit

Storage of components varies. See protocol for specific instructions.

www.novusbio.com



technical@novusbio.com

Protocols, Publications, Related Products, Reviews, Research Tools and Images at:
www.novusbio.com/NBP3-18220

Updated 11/19/2025 v.20.1

Earn rewards for product
reviews and publications.

Submit a publication at www.novusbio.com/publications

Submit a review at www.novusbio.com/reviews/destination/NBP3-18220



NBP3-18220**Human BACH1 ELISA Kit (Colorimetric)****Product Information**

Unit Size	1 Kit
Concentration	Concentration is not relevant for this product. Please see the protocols for proper use of this product.
Storage	Storage of components varies. See protocol for specific instructions.

Product Description

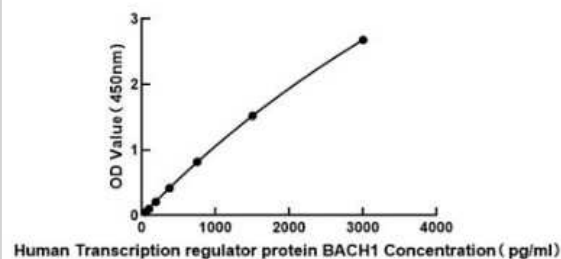
Description	The stop solution changes color from blue to yellow and the intensity of the color is measured at 450 nm using a spectrophotometer. In order to measure the concentration of Human BACH1 in the sample, this Human BACH1 ELISA Kit includes a set of calibration standards. The calibration standards are assayed at the same time as the samples and allow the operator to produce a standard curve of optical density versus Human BACH1 concentration. The concentration of the samples is then determined by comparing the O.D. of the samples to the standard curve.
Gene ID	571
Gene Symbol	BACH1
Species	Human
Kit Components	Microtiter Plate, Enzyme Conjugate, Standards, Substrate A, Substrate B, Stop Solution, Wash Solution, Balance Solution
Standard Curve Range	46.87-3000 pg/ml
Sensitivity	22.15 pg/ml
Inter Assay	%CV < 15
Intra Assay	%CV < 10
Assay Type	Sandwich ELISA
Spiking Recovery	81-113%
Suitable Sample Type	Serum, plasma and cell culture supernates
Sample Volume	100 ul

Product Application Details

Applications	ELISA
Recommended Dilutions	ELISA

Images

ELISA: Human BACH1 ELISA Kit (Colorimetric) [NBP3-18220] - Standard Curve Reference





Novus Biologicals USA

10730 E. Briarwood Avenue
Centennial, CO 80112
USA
Phone: 303.730.1950
Toll Free: 1.888.506.6887
Fax: 303.730.1966
nb-customerservice@bio-techne.com

Bio-Techne Canada

21 Canmotor Ave
Toronto, ON M8Z 4E6
Canada
Phone: 905.827.6400
Toll Free: 855.668.8722
Fax: 905.827.6402
canada.inquires@bio-techne.com

Bio-Techne Ltd

19 Barton Lane
Abingdon Science Park
Abingdon, OX14 3NB, United Kingdom
Phone: (44) (0) 1235 529449
Free Phone: 0800 37 34 15
Fax: (44) (0) 1235 533420
info.EMEA@bio-techne.com

General Contact Information

www.novusbio.com
Technical Support: nb-technical@bio-techne.com
Orders: nb-customerservice@bio-techne.com
General: novus@novusbio.com

Limitations

This product is for research use only and is not approved for use in humans or in clinical diagnosis. ELISA Kits are guaranteed for 6 months from date of receipt.

For more information on our 100% guarantee, please visit www.novusbio.com/guarantee

Earn gift cards/discounts by submitting a review: www.novusbio.com/reviews/submit/NBP3-18220

Earn gift cards/discounts by submitting a publication using this product:
www.novusbio.com/publications

