

# Product Datasheet

## MDA-MB-231 Whole Cell Lysate

### NBP3-18060

Unit Size: 500 ug

Store at -70C. Avoid freeze-thaw cycles.

[www.novusbio.com](http://www.novusbio.com)



[technical@novusbio.com](mailto:technical@novusbio.com)

Protocols, Publications, Related Products, Reviews, Research Tools and Images at:  
[www.novusbio.com/NBP3-18060](http://www.novusbio.com/NBP3-18060)

Updated 8/6/2023 v.20.1

Earn rewards for product  
reviews and publications.

Submit a publication at [www.novusbio.com/publications](http://www.novusbio.com/publications)

Submit a review at [www.novusbio.com/reviews/destination/NBP3-18060](http://www.novusbio.com/reviews/destination/NBP3-18060)



**NBP3-18060****MDA-MB-231 Whole Cell Lysate****Product Information**

<b>Unit Size</b>	500 ug
<b>Concentration</b>	Please contact technical services for concentration.
<b>Storage</b>	Store at -70C. Avoid freeze-thaw cycles.
<b>Preservative</b>	No Preservative
<b>Purity</b>	N/A
<b>Buffer</b>	1X RIPA Buffer with HALT Protease and Phosphatase Inhibitors.

**Product Description**

<b>Species</b>	Human
<b>Preparation Method</b>	MDA-MB-231 cells were grown in Dulbecco's medium supplemented with 10% fetal bovine serum. Cells were washed with PBS and then incubated on ice in modified RIPA buffer, containing 150 mM sodium chloride, 50 mM Tris HCl, pH 7.4, 1 mM EDTA, 1.0% NP-40, 0.5% sodium deoxycholic acid, 0.1% SDS and 0.01% (w/v) sodium azide to lyse the cells. Protein integrity was ensured using a cocktail of protease inhibitors with broad specificity for the inhibition of aspartic, cysteine, and serine proteases as well as aminopeptidases (0.1 mM AEBSF HCl, 0.08 uM Aprotinin, 5 uM Bestatin, 1.5 uM E-64, 2 uM Leupeptin Hemisulfate, 1 uM Pepstatin A). Phosphatase inhibitors 1 mM NaF and 1 mM Na <sub>3</sub> VO <sub>4</sub> were also added. Cell debris was removed by centrifugation. Protein concentration was determined by a modified Lowry assay using a commercially available kit. Protein concentration was adjusted to 4 mg/ml with 1X RIPA buffer.
<b>Lysate Type</b>	Cell
<b>Lysate Subcellular Fraction</b>	Whole

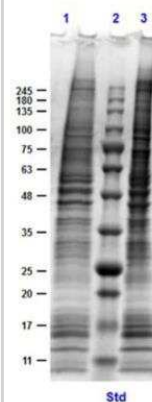
**Product Application Details**

<b>Applications</b>	Western Blot, Immunoprecipitation, SDS-Page, Chromatin Immunoprecipitation (ChIP)
<b>Recommended Dilutions</b>	Western Blot, Immunoprecipitation, SDS-Page, Chromatin Immunoprecipitation (ChIP)
<b>Application Notes</b>	This product has been tested by SDS-PAGE. Multi-purpose MDA-MB-231 Whole Cell Lysate are especially prepared as positive control for multiple assays including western blot, immunoprecipitation (IP), capture ELISA or other assays requiring native protein sample. For separation by SDS-PAGE and subsequent western blot analysis, lysates should be diluted by user to desired concentration in SDS-PAGE buffer with 2-mercaptoethanol or dithiothreitol as the reducing agent and heated to 95C for 5 minutes. Sample is ready for use in immunoprecipitation and ELISA experiments, conditions should be optimized by the user. It is recommended to use TrueBlot IP reagents for immunoprecipitation experiments.



## Images

SDS-Page: MDA-MB-231 Whole Cell Lysate [NBP3-18060] - SDS PAGE Results of MDA-MB-231 Whole Cell Lysate. Lane 1: MDA-MB-231 Whole Cell Lysate Reduced [10ug]. Lane 2: Opal Prestained Molecular Weight Marker (p/n MB-210-0500). Lane 3: MDA-MB-231 Whole Cell Lysate Non-Reduced [10ug]. 4-20% Gel, Coomassie Stained.





### **Novus Biologicals USA**

10730 E. Briarwood Avenue  
Centennial, CO 80112  
USA

Phone: 303.730.1950  
Toll Free: 1.888.506.6887  
Fax: 303.730.1966  
novus@novusbio.com

### **Bio-Techne Canada**

21 Canmotor Ave  
Toronto, ON M8Z 4E6  
Canada

Phone: 905.827.6400  
Toll Free: 855.668.8722  
Fax: 905.827.6402  
canada.inquires@bio-techne.com

### **Bio-Techne Ltd**

19 Barton Lane  
Abingdon Science Park  
Abingdon, OX14 3NB, United Kingdom  
Phone: (44) (0) 1235 529449  
Free Phone: 0800 37 34 15  
Fax: (44) (0) 1235 533420  
info.EMEA@bio-techne.com

### **General Contact Information**

www.novusbio.com  
Technical Support: technical@novusbio.com  
Orders: orders@novusbio.com  
General: novus@novusbio.com

### **Limitations**

This product is for research use only and is not approved for use in humans or in clinical diagnosis. Lysates are guaranteed for 6 months from date of receipt.

For more information on our 100% guarantee, please visit [www.novusbio.com/guarantee](http://www.novusbio.com/guarantee)

Earn gift cards/discounts by submitting a review: [www.novusbio.com/reviews/submit/NBP3-18060](http://www.novusbio.com/reviews/submit/NBP3-18060)

Earn gift cards/discounts by submitting a publication using this product:  
[www.novusbio.com/publications](http://www.novusbio.com/publications)

