

Product Datasheet

gamma Tubulin Antibody (5R3N3) **NBP3-16852-100ul**

Unit Size: 100 ul

Store at -20C. Avoid freeze-thaw cycles.

www.novusbio.com



technical@novusbio.com

Protocols, Publications, Related Products, Reviews, Research Tools and Images at:
www.novusbio.com/NBP3-16852

Updated 7/31/2025 v.20.1

**Earn rewards for product
reviews and publications.**

Submit a publication at www.novusbio.com/publications

Submit a review at www.novusbio.com/reviews/destination/NBP3-16852



NBP3-16852-100ul

gamma Tubulin Antibody (5R3N3)

Product Information

Unit Size	100 ul
Concentration	Please see the vial label for concentration. If unlisted please contact technical services.
Storage	Store at -20C. Avoid freeze-thaw cycles.
Clonality	Monoclonal
Clone	5R3N3
Preservative	0.02% Sodium Azide
Isotype	IgG
Purity	Affinity purified
Buffer	PBS (pH 7.3), 50% glycerol, 0.05% BSA
Target Molecular Weight	51 kDa

Product Description

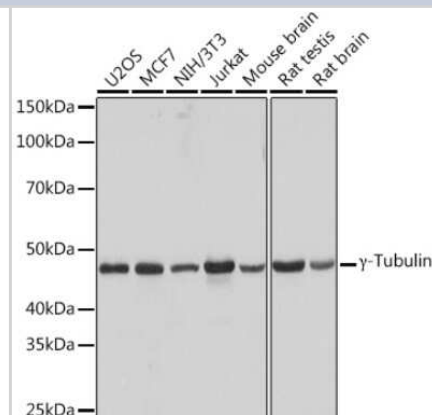
Host	Rabbit
Gene ID	7283
Gene Symbol	TUBG1
Species	Human, Mouse, Rat
Immunogen	Recombinant fusion protein containing a sequence corresponding to amino acids 231-451 of human gamma Tubulin (P23258). LVSTIMSASTTTLRYPGYMNNDLIGLIASLIPTPRLHFLMTGYTPLTTDQSVASVR KTTVLDMRRLQPKNVMVSTGRDRQTNHCYIAILNIIQGEVDPTQVHKSLQRIR ERKLANFIPWGPASIQVALSRKSPYLPSAHRVSGLMANHTSISSLFERTCRQY DKLRKREAFLEQFRKEDMFKDNFDEMDTSREIVQQQLIDEYHAATRPDYISWGT QEQ

Product Application Details

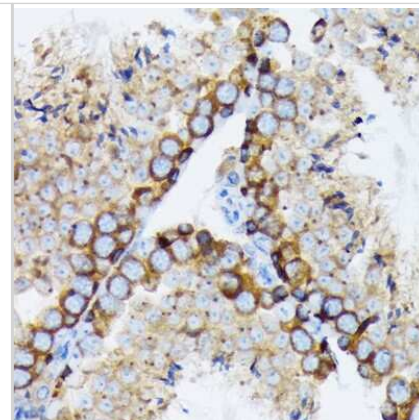
Applications	Western Blot, Immunohistochemistry-Paraffin, ELISA, Immunocytochemistry/Immunofluorescence, Immunohistochemistry
Recommended Dilutions	Western Blot 1:1000 - 1:6000, ELISA Recommended starting concentration is 1 µg/mL. Please optimize the concentration based on your specific assay requirements., Immunohistochemistry 1:200 - 1:2000, Immunocytochemistry/Immunofluorescence 1:100 - 1:1000, Immunohistochemistry-Paraffin 1:200 - 1:2000

Images

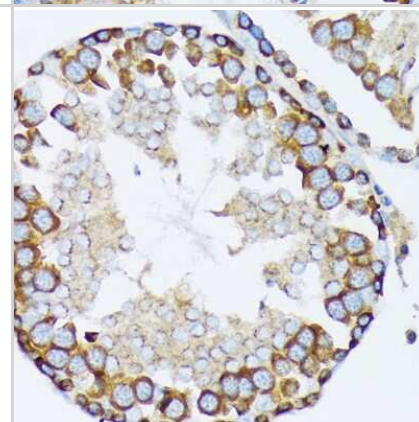
Western Blot: gamma Tubulin Antibody (5R3N3) [NBP3-16852] - Western blot analysis of extracts of various cell lines, using gamma Tubulin Rabbit mAb (NBP3-16852) at 1:1000 dilution. Secondary antibody: HRP Goat Anti-Rabbit IgG (H+L) at 1:10000 dilution. Lysates/proteins: 25ug per lane. Blocking buffer: 3% nonfat dry milk in TBST. Detection: ECL Basic Kit. Exposure time: 3s.



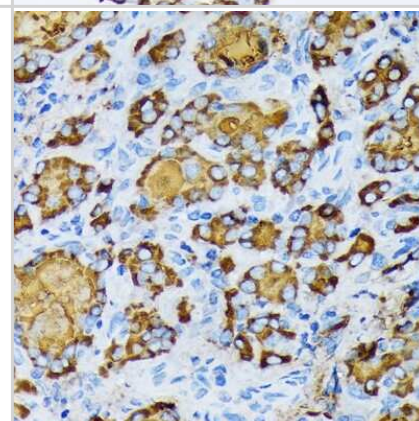
Immunohistochemistry-Paraffin: gamma Tubulin Antibody (5R3N3) [NBP3-16852] - Immunohistochemistry of paraffin-embedded mouse testis using gamma Tubulin Rabbit mAb (NBP3-16852) at dilution of 1:100 (40x lens). Perform microwave antigen retrieval with 10 mM Tris/EDTA buffer pH 9.0 before commencing with IHC staining protocol.



Immunohistochemistry-Paraffin: gamma Tubulin Antibody (5R3N3) [NBP3-16852] - Immunohistochemistry of paraffin-embedded rat testis using gamma Tubulin Rabbit mAb (NBP3-16852) at dilution of 1:100 (40x lens). Perform microwave antigen retrieval with 10 mM Tris/EDTA buffer pH 9.0 before commencing with IHC staining protocol.



Immunohistochemistry-Paraffin: gamma Tubulin Antibody (5R3N3) [NBP3-16852] - Immunohistochemistry of paraffin-embedded human thyroid cancer using gamma Tubulin Rabbit mAb (NBP3-16852) at dilution of 1:100 (40x lens). Perform microwave antigen retrieval with 10 mM Tris/EDTA buffer pH 9.0 before commencing with IHC staining protocol.



Western Blot: gamma Tubulin Antibody (5R3N3) [NBP3-16852] - Western Blot of the lysate of RM1 cells. Image from verified customer review.

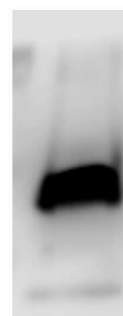
MW, KDa

72

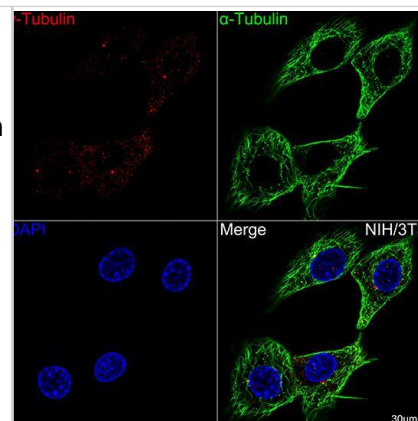
55

36

28



Immunocytochemistry/Immunofluorescence: gamma Tubulin Antibody (5R3N3) [NBP3-16852] - Confocal imaging of NIH-3T3 cells using γ -Tubulin Rabbit mAb (dilution 1:100) (Red). The cells were counterstained with Alpha-tubulin (ubiquitous) chain Rabbit mAb (dilution 1:100) (Green). DAPI was used for nuclear staining (blue). Objective: 60x.

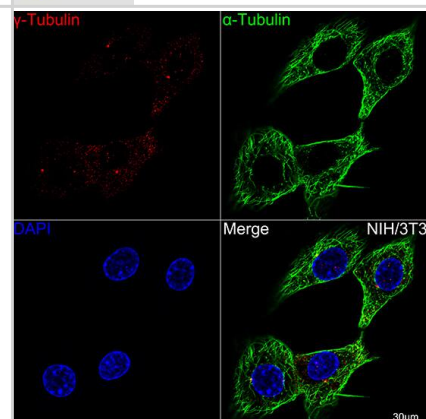


Western Blot: Rabbit gamma Tubulin mAb (5R3N3) [NBP3-16852] - Western blot of the lysate of PC-3 cells. Image from a verified customer review.

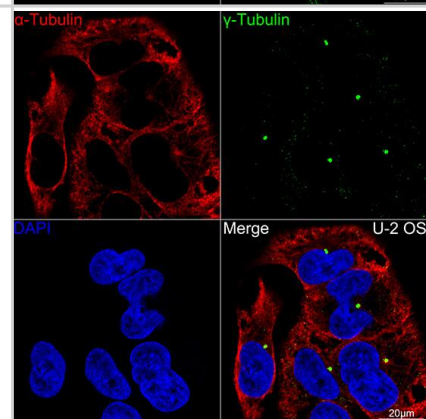
260
140
100
70
50
40
35
25



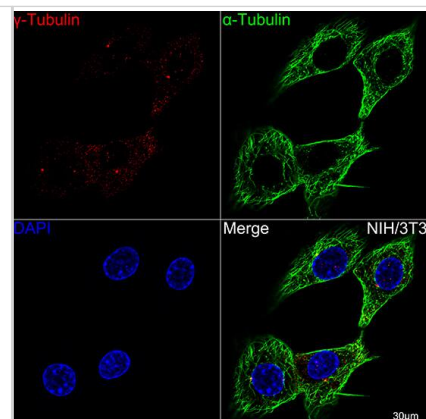
Immunocytochemistry/ Immunofluorescence: gamma Tubulin Antibody (5R3N3) [NBP3-16852] - Confocal imaging of NIH-3T3 cells using gamma Tubulin Rabbit mAb . The cells were counterstained with Alpha-tubulin (ubiquitous) chain Rabbit mAb (Green). DAPI was used for nuclear staining (blue). Objective: 60x.



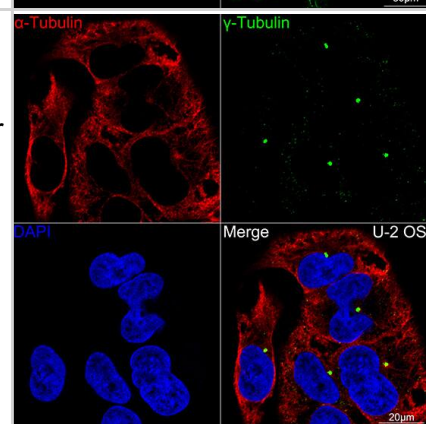
Immunocytochemistry/ Immunofluorescence: gamma Tubulin Antibody (5R3N3) [NBP3-16852] - Confocal imaging of U-2OS cells using gamma Tubulin Rabbit mAb (Green). The cells were counterstained with Alpha-tubulin (ubiquitous) chain Rabbit mAb . DAPI was used for nuclear staining (blue). Objective: 60x.



Immunocytochemistry/ Immunofluorescence: gamma Tubulin Antibody (5R3N3) [gamma Tubulin] - Confocal imaging of NIH-3T3 cells using gamma Tubulin Rabbit mAb . The cells were counterstained with Alpha-tubulin (ubiquitous) chain Rabbit mAb (Green). DAPI was used for nuclear staining (blue). Objective: 60x.



Immunocytochemistry/ Immunofluorescence: gamma Tubulin Antibody (5R3N3) [gamma Tubulin] - Confocal imaging of U-2OS cells using gamma Tubulin Rabbit mAb (Green). The cells were counterstained with Alpha-tubulin (ubiquitous) chain Rabbit mAb . DAPI was used for nuclear staining (blue). Objective: 60x.





Novus Biologicals USA

10730 E. Briarwood Avenue
Centennial, CO 80112
USA
Phone: 303.730.1950
Toll Free: 1.888.506.6887
Fax: 303.730.1966
nb-customerservice@bio-techne.com

Bio-Techne Canada

21 Canmotor Ave
Toronto, ON M8Z 4E6
Canada
Phone: 905.827.6400
Toll Free: 855.668.8722
Fax: 905.827.6402
canada.inquires@bio-techne.com

Bio-Techne Ltd

19 Barton Lane
Abingdon Science Park
Abingdon, OX14 3NB, United Kingdom
Phone: (44) (0) 1235 529449
Free Phone: 0800 37 34 15
Fax: (44) (0) 1235 533420
info.EMEA@bio-techne.com

General Contact Information

www.novusbio.com
Technical Support: nb-technical@bio-techne.com
Orders: nb-customerservice@bio-techne.com
General: novus@novusbio.com

Products Related to NBP3-16852-100ul

HAF008	Goat anti-Rabbit IgG Secondary Antibody [HRP]
NB7160	Goat anti-Rabbit IgG (H+L) Secondary Antibody [HRP]
NBP2-24891	Rabbit IgG Isotype Control
NBP1-72534-100ug	Recombinant Human gamma Tubulin His Protein

Limitations

This product is for research use only and is not approved for use in humans or in clinical diagnosis. Primary Antibodies are guaranteed for 1 year from date of receipt.

For more information on our 100% guarantee, please visit www.novusbio.com/guarantee

Earn gift cards/discounts by submitting a review: www.novusbio.com/reviews/submit/NBP3-16852

Earn gift cards/discounts by submitting a publication using this product:
www.novusbio.com/publications

