

Product Datasheet

HIPK2 Antibody (3Z5P6)

NBP3-16825-100ul

Unit Size: 100 ul

Store at -20C. Avoid freeze-thaw cycles.

www.novusbio.com



technical@novusbio.com

Protocols, Publications, Related Products, Reviews, Research Tools and Images at:
www.novusbio.com/NBP3-16825

Updated 7/31/2025 v.20.1

Earn rewards for product
reviews and publications.

Submit a publication at www.novusbio.com/publications

Submit a review at www.novusbio.com/reviews/destination/NBP3-16825



NBP3-16825-100ul

HIPK2 Antibody (3Z5P6)

Product Information

Unit Size	100 ul
Concentration	Please see the vial label for concentration. If unlisted please contact technical services.
Storage	Store at -20C. Avoid freeze-thaw cycles.
Clonality	Monoclonal
Clone	3Z5P6
Preservative	0.02% Sodium Azide
Isotype	IgG
Purity	Affinity purified
Buffer	PBS (pH 7.3), 50% glycerol, 0.05% BSA

Product Description

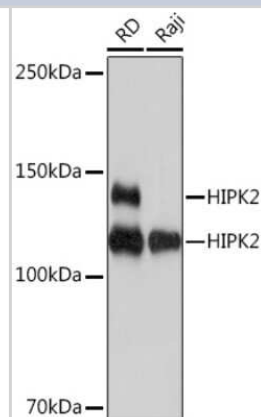
Host	Rabbit
Gene ID	28996
Gene Symbol	HIPK2
Species	Human
Immunogen	A synthetic peptide corresponding to a sequence within amino acids 100-200 of human HIPK2 (Q9H2X6). STSVTGQVLGGPHNLMRRSTVSLLDYQKCGLKRKSEEIENTSSVQIIEEHPPM IQNNASGATVATATTSTATSKNSGSNSEGDYQLVQHEVLCSMTNTYE

Product Application Details

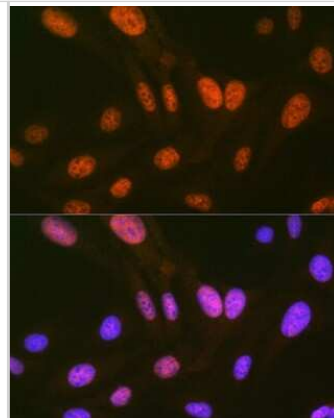
Applications	Western Blot, Immunocytochemistry/ Immunofluorescence
Recommended Dilutions	Western Blot 1:500 - 1:2000, Immunocytochemistry/ Immunofluorescence 1:50 - 1:200

Images

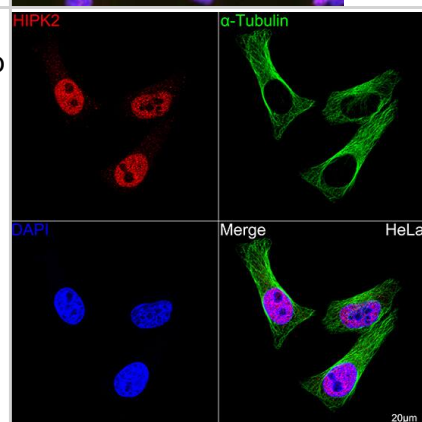
Western Blot: HIPK2 Antibody (3Z5P6) [NBP3-16825] - Western blot analysis of extracts of various cell lines, using HIPK2 Rabbit mAb (NBP3-16825) at 1:1000 dilution. Secondary antibody: HRP Goat Anti-Rabbit IgG (H+L) at 1:10000 dilution. Lysates/proteins: 25ug per lane. Blocking buffer: 3% nonfat dry milk in TBST. Detection: ECL Basic Kit. Exposure time: 1s.



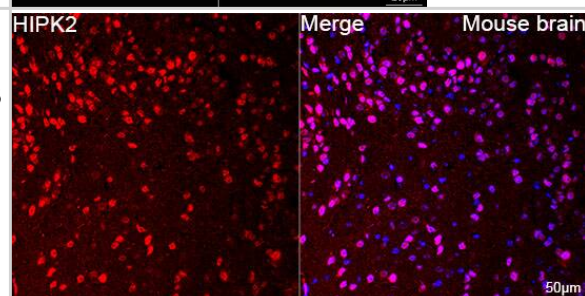
Immunocytochemistry/Immunofluorescence: HIPK2 Antibody (3Z5P6) [NBP3-16825] - Immunofluorescence analysis of U-2 OS cells using HIPK2 Rabbit mAb (NBP3-16825) at dilution of 1:100 (40x lens). Blue: DAPI for nuclear staining.



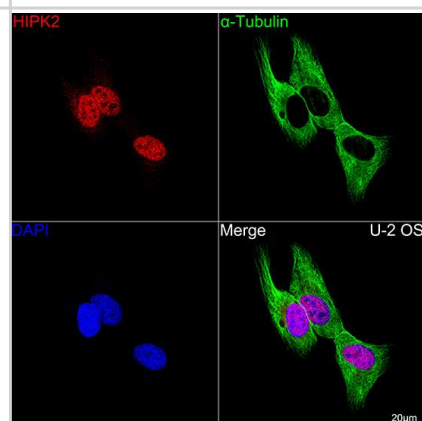
Immunocytochemistry/ Immunofluorescence: HIPK2 Antibody (3Z5P6) [NBP3-16825] - Confocal imaging of HeLa cells using HIPK2 Rabbit mAb followed by a further incubation with Cy3 Goat Anti-Rabbit IgG (H+L) . The cells were counterstained with alpha-Tubulin Mouse mAb followed by incubation with ABflo(R) 488-conjugated Goat Anti-Mouse IgG (H+L) Ab (Green). DAPI was used for nuclear staining (Blue). Objective: 100x.



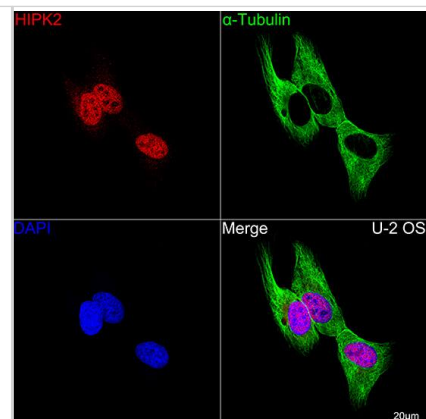
Immunocytochemistry/ Immunofluorescence: HIPK2 Antibody (3Z5P6) [NBP3-16825] - Confocal imaging of paraffin-embedded Mouse brain tissue using HIPK2 Rabbit mAb followed by a further incubation with Cy3 Goat Anti-Rabbit IgG (H+L) . DAPI was used for nuclear staining (Blue). Objective: 40x. Perform microwave antigen retrieval with 0.01 M citrate buffer (pH 6.0) prior to IF staining.



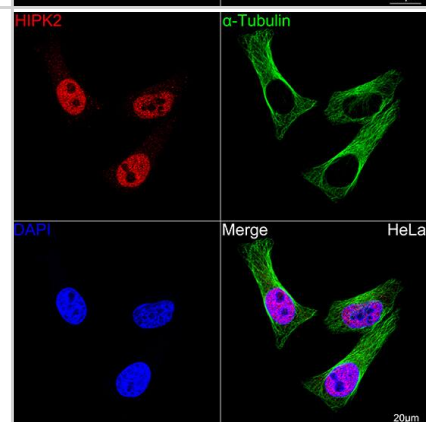
Immunocytochemistry/ Immunofluorescence: HIPK2 Antibody (3Z5P6) [NBP3-16825] - Confocal imaging of U-2 OS cells using HIPK2 Rabbit mAb followed by a further incubation with Cy3 Goat Anti-Rabbit IgG (H+L) . The cells were counterstained with alpha-Tubulin Mouse mAb followed by incubation with ABflo(R) 488-conjugated Goat Anti-Mouse IgG (H+L) Ab (Green). DAPI was used for nuclear staining (Blue). Objective: 100x.



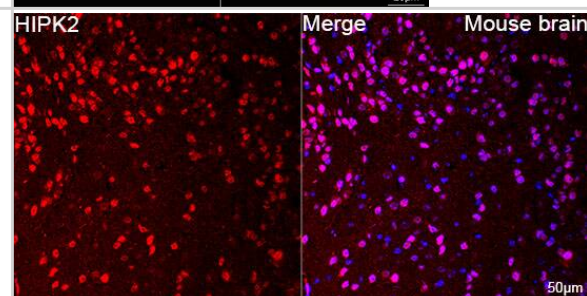
Immunocytochemistry/ Immunofluorescence: HIPK2 Antibody (3Z5P6) [HIPK2] - Confocal imaging of U-2 OS cells using HIPK2 Rabbit mAb followed by a further incubation with Cy3 Goat Anti-Rabbit IgG (H+L) . The cells were counterstained with alpha-Tubulin Mouse mAb followed by incubation with ABflo 488-conjugated Goat Anti-Mouse IgG (H+L) Ab (Green). DAPI was used for nuclear staining (Blue). Objective: 100x.



Immunocytochemistry/ Immunofluorescence: HIPK2 Antibody (3Z5P6) [HIPK2] - Confocal imaging of HeLa cells using HIPK2 Rabbit mAb followed by a further incubation with Cy3 Goat Anti-Rabbit IgG (H+L) . The cells were counterstained with alpha-Tubulin Mouse mAb followed by incubation with ABflo 488-conjugated Goat Anti-Mouse IgG (H+L) Ab (Green). DAPI was used for nuclear staining (Blue). Objective: 100x.



Immunocytochemistry/ Immunofluorescence: HIPK2 Antibody (3Z5P6) [HIPK2] - Confocal imaging of paraffin-embedded Mouse brain tissue using HIPK2 Rabbit mAb followed by a further incubation with Cy3 Goat Anti-Rabbit IgG (H+L) . DAPI was used for nuclear staining (Blue). Objective: 40x. Perform microwave antigen retrieval with 0.01 M citrate buffer (pH 6.0) prior to IF staining.





Novus Biologicals USA

10730 E. Briarwood Avenue
Centennial, CO 80112
USA
Phone: 303.730.1950
Toll Free: 1.888.506.6887
Fax: 303.730.1966
nb-customerservice@bio-techne.com

Bio-Techne Canada

21 Canmotor Ave
Toronto, ON M8Z 4E6
Canada
Phone: 905.827.6400
Toll Free: 855.668.8722
Fax: 905.827.6402
canada.inquires@bio-techne.com

Bio-Techne Ltd

19 Barton Lane
Abingdon Science Park
Abingdon, OX14 3NB, United Kingdom
Phone: (44) (0) 1235 529449
Free Phone: 0800 37 34 15
Fax: (44) (0) 1235 533420
info.EMEA@bio-techne.com

General Contact Information

www.novusbio.com
Technical Support: nb-technical@bio-techne.com
Orders: nb-customerservice@bio-techne.com
General: novus@novusbio.com

Products Related to NBP3-16825-100ul

HAF008	Goat anti-Rabbit IgG Secondary Antibody [HRP]
NB7160	Goat anti-Rabbit IgG (H+L) Secondary Antibody [HRP]
NBP2-24891	Rabbit IgG Isotype Control
NBP1-89462PEP	HIPK2 Recombinant Protein Antigen

Limitations

This product is for research use only and is not approved for use in humans or in clinical diagnosis. Primary Antibodies are guaranteed for 1 year from date of receipt.

For more information on our 100% guarantee, please visit www.novusbio.com/guarantee

Earn gift cards/discounts by submitting a review: www.novusbio.com/reviews/submit/NBP3-16825

Earn gift cards/discounts by submitting a publication using this product:
www.novusbio.com/publications

