

Product Datasheet

G3BP1 Antibody (5A4T0)

NBP3-16302-100ul

Unit Size: 100 ul

Store at -20C. Avoid freeze-thaw cycles.

www.novusbio.com



technical@novusbio.com

Protocols, Publications, Related Products, Reviews, Research Tools and Images at:
www.novusbio.com/NBP3-16302

Updated 7/31/2025 v.20.1

Earn rewards for product
reviews and publications.

Submit a publication at www.novusbio.com/publications

Submit a review at www.novusbio.com/reviews/destination/NBP3-16302



NBP3-16302-100ul

G3BP1 Antibody (5A4T0)

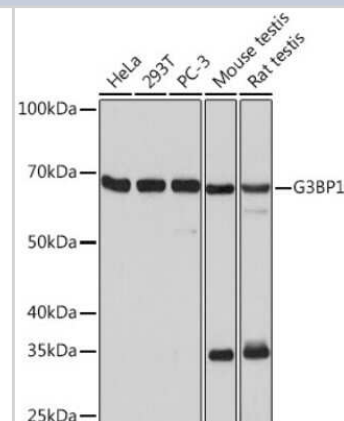
Product Information	
Unit Size	100 ul
Concentration	Please see the vial label for concentration. If unlisted please contact technical services.
Storage	Store at -20C. Avoid freeze-thaw cycles.
Clonality	Monoclonal
Clone	5A4T0
Preservative	0.02% Sodium Azide
Isotype	IgG
Purity	Affinity purified
Buffer	PBS (pH 7.3), 50% glycerol, 0.05% BSA

Product Description	
Host	Rabbit
Gene ID	10146
Gene Symbol	G3BP1
Species	Human, Mouse, Rat
Immunogen	A synthetic peptide corresponding to a sequence within amino acids 350-450 of human G3BP1 (Q13283). EVDKSELKDFFQSYGNVVELRINSGGKLPNFGFVVFDDSEPVQKVLSNRPIMF RGEVRLNVEEKKTRAAREGDRRDNRRLRGPGGPRGGLGGGMRGPPRGGM

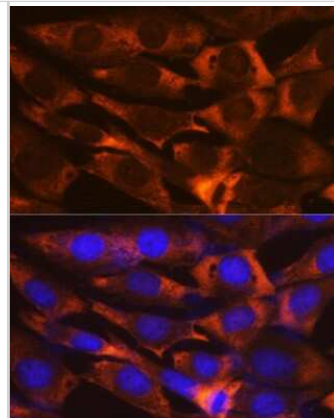
Product Application Details	
Applications	Western Blot, Immunocytochemistry/ Immunofluorescence, Immunoprecipitation
Recommended Dilutions	Western Blot 1:500 - 1:1000, Immunocytochemistry/ Immunofluorescence 1:50 - 1:200, Immunoprecipitation 1:500 - 1:1000

Images

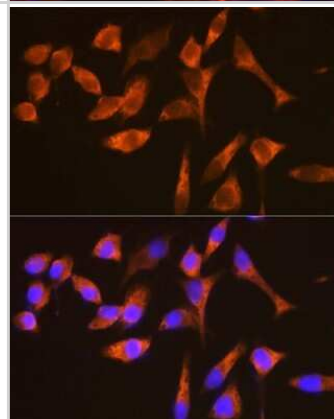
Western Blot: G3BP1 Antibody (5A4T0) [NBP3-16302] - Western blot analysis of extracts of various cell lines, using G3BP11 Rabbit mAb (NBP3-16302) at 1:1000 dilution. Secondary antibody: HRP Goat Anti-Rabbit IgG (H+L) at 1:10000 dilution. Lysates/proteins: 25ug per lane. Blocking buffer: 3% nonfat dry milk in TBST. Detection: ECL Basic Kit. Exposure time: 10s.



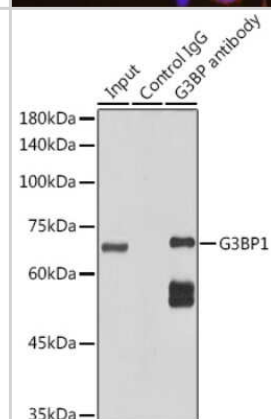
Immunocytochemistry/Immunofluorescence: G3BP1 Antibody (5A4T0) [NBP3-16302] - Immunofluorescence analysis of NIH-3T3 cells using G3BP11 Rabbit mAb (NBP3-16302) at dilution of 1:100 (40x lens). Blue: DAPI for nuclear staining.



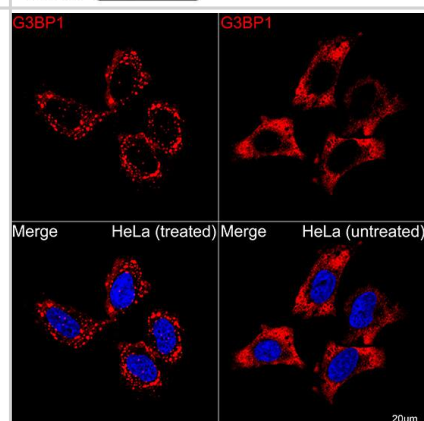
Immunocytochemistry/Immunofluorescence: G3BP1 Antibody (5A4T0) [NBP3-16302] - Immunofluorescence analysis of HeLa cells using G3BP11 Rabbit mAb (NBP3-16302) at dilution of 1:100 (40x lens). Blue: DAPI for nuclear staining.



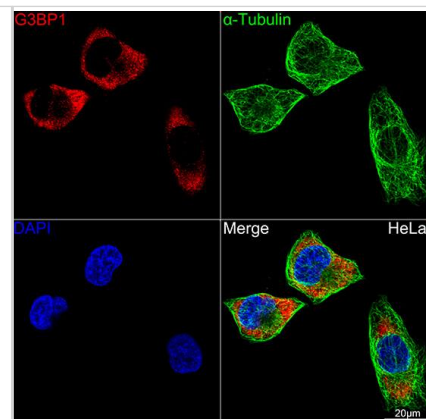
Immunoprecipitation: G3BP1 Antibody (5A4T0) [NBP3-16302] - Immunoprecipitation analysis of 300ug extracts of HeLa cells using 3ug G3BP11 antibody (NBP3-16302). Western blot was performed from the immunoprecipitate using G3BP11 antibody (NBP3-16302) at a dilution of 1:1000.



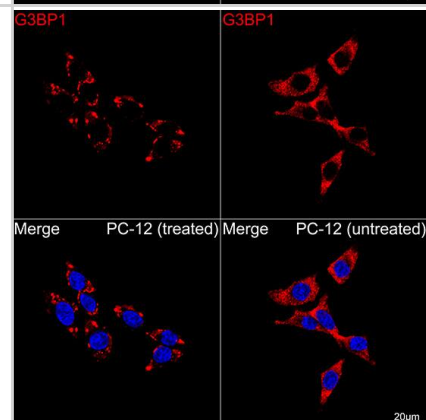
Immunocytochemistry/ Immunofluorescence: G3BP1 Antibody (5A4T0) [NBP3-16302] - Confocal imaging of HeLa cells (treated with sodium arsenite) and HeLa cells (untreated) using G3BP1 Rabbit mAb followed by a further incubation with Cy3 Goat Anti-Rabbit IgG (H+L) . DAPI was used for nuclear staining (Blue). Objective: 100x.



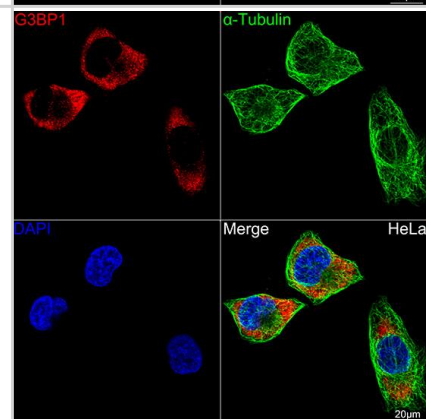
Immunocytochemistry/ Immunofluorescence: G3BP1 Antibody (5A4T0) [NBP3-16302] - Confocal imaging of HeLa cells using G3BP1 Rabbit mAb. The cells were counterstained with alpha-Tubulin Mouse mAb (Green). DAPI was used for nuclear staining (blue). Objective: 100x.



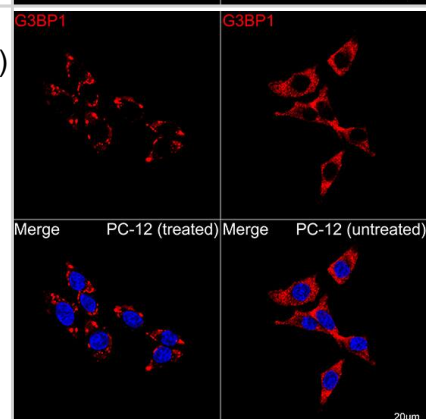
Immunocytochemistry/ Immunofluorescence: G3BP1 Antibody (5A4T0) [NBP3-16302] - Confocal imaging of PC-12 cells (treated with sodium arsenite) and PC-12 cells (untreated) using G3BP1 Rabbit mAb followed by a further incubation with Cy3 Goat Anti-Rabbit IgG (H+L) . DAPI was used for nuclear staining (Blue). Objective: 100x.



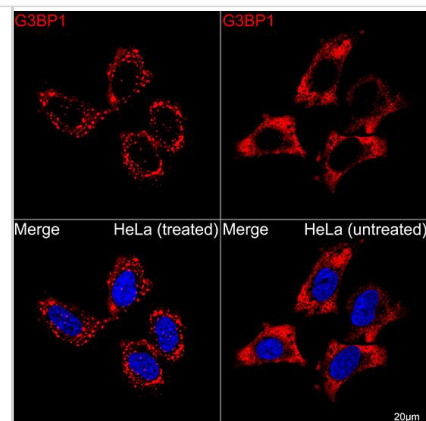
Immunocytochemistry/ Immunofluorescence: G3BP1 Antibody (5A4T0) [G3BP1] - Confocal imaging of HeLa cells using G3BP1 Rabbit mAb . The cells were counterstained with alpha-Tubulin Mouse mAb (Green). DAPI was used for nuclear staining (blue). Objective: 100x.



Immunocytochemistry/ Immunofluorescence: G3BP1 Antibody (5A4T0) [G3BP1] - Confocal imaging of PC-12 cells (treated with sodium arsenite) and PC-12 cells (untreated) using G3BP1 Rabbit mAb followed by a further incubation with Cy3 Goat Anti-Rabbit IgG (H+L) . DAPI was used for nuclear staining (Blue). Objective: 100x.



Immunocytochemistry/ Immunofluorescence: G3BP1 Antibody (5A4T0) [G3BP1] - Confocal imaging of HeLa cells (treated with sodium arsenite) and HeLa cells (untreated) using G3BP1 Rabbit mAb followed by a further incubation with Cy3 Goat Anti-Rabbit IgG (H+L) . DAPI was used for nuclear staining (Blue). Objective: 100x.





Novus Biologicals USA

10730 E. Briarwood Avenue
Centennial, CO 80112
USA
Phone: 303.730.1950
Toll Free: 1.888.506.6887
Fax: 303.730.1966
nb-customerservice@bio-techne.com

Bio-Techne Canada

21 Canmotor Ave
Toronto, ON M8Z 4E6
Canada
Phone: 905.827.6400
Toll Free: 855.668.8722
Fax: 905.827.6402
canada.inquires@bio-techne.com

Bio-Techne Ltd

19 Barton Lane
Abingdon Science Park
Abingdon, OX14 3NB, United Kingdom
Phone: (44) (0) 1235 529449
Free Phone: 0800 37 34 15
Fax: (44) (0) 1235 533420
info.EMEA@bio-techne.com

General Contact Information

www.novusbio.com
Technical Support: nb-technical@bio-
techne.com
Orders: nb-customerservice@bio-techne.com
General: novus@novusbio.com

Products Related to NBP3-16302-100ul

HAF008	Goat anti-Rabbit IgG Secondary Antibody [HRP]
NB7160	Goat anti-Rabbit IgG (H+L) Secondary Antibody [HRP]
NBP2-24891	Rabbit IgG Isotype Control
NBP1-50925-50ug	Recombinant Human G3BP1 His Protein

Limitations

This product is for research use only and is not approved for use in humans or in clinical diagnosis. Primary Antibodies are guaranteed for 1 year from date of receipt.

For more information on our 100% guarantee, please visit www.novusbio.com/guarantee

Earn gift cards/discounts by submitting a review: www.novusbio.com/reviews/submit/NBP3-16302

Earn gift cards/discounts by submitting a publication using this product:
www.novusbio.com/publications

