

Product Datasheet

TOMM20 Antibody (10G6I8)

NBP3-15750-100ul

Unit Size: 100 ul

Store at -20C. Avoid freeze-thaw cycles.

www.novusbio.com



technical@novusbio.com

Protocols, Publications, Related Products, Reviews, Research Tools and Images at:
www.novusbio.com/NBP3-15750

Updated 7/31/2025 v.20.1

Earn rewards for product
reviews and publications.

Submit a publication at www.novusbio.com/publications

Submit a review at www.novusbio.com/reviews/destination/NBP3-15750



NBP3-15750-100ul

TOMM20 Antibody (10G6I8)

Product Information

Unit Size	100 ul
Concentration	Please see the vial label for concentration. If unlisted please contact technical services.
Storage	Store at -20C. Avoid freeze-thaw cycles.
Clonality	Monoclonal
Clone	10G6I8
Preservative	0.05% Proclin 300
Isotype	IgG
Purity	Affinity purified
Buffer	PBS (pH 7.3), 50% glycerol, 0.05% BSA
Target Molecular Weight	16 kDa

Product Description

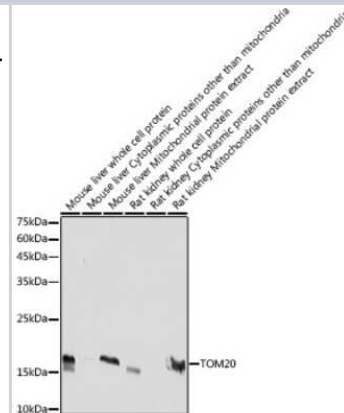
Host	Rabbit
Gene ID	9804
Gene Symbol	TOMM20
Species	Human, Mouse, Rat
Immunogen	Recombinant fusion protein containing a sequence corresponding to amino acids 20-145 of human TOMM20 (NP_055580.1). YCIYFDRKRRSDPNFKNRLRERRKKQKLAKERAGLSKLPDLKDAAEAVQKFFLE EIQLGEELLAQGEYEKGVDHLTNAIAVCGQPQQLLQVLQQTLPVPVFQMLLTKL PTISQRIVSAQSLAEDDVE

Product Application Details

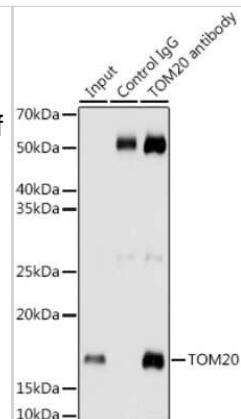
Applications	Western Blot, Immunohistochemistry-Paraffin, ELISA, Immunocytochemistry/Immunofluorescence, Immunohistochemistry, Immunoprecipitation
Recommended Dilutions	Western Blot 1:2000 - 1:6000, ELISA, Immunohistochemistry 1:50 - 1:200, Immunocytochemistry/ Immunofluorescence 1:100 - 1:500, Immunoprecipitation -0.5µg-4µg antibody for 200µg-400µg extracts of whole cells, Immunohistochemistry-Paraffin 1:50 - 1:200

Images

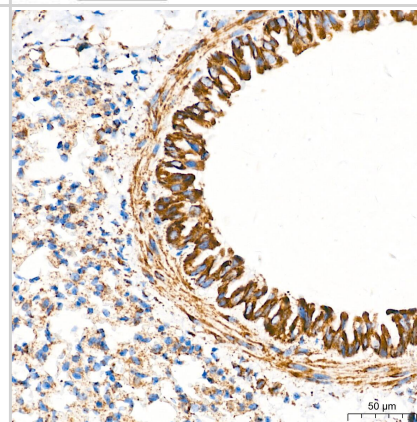
Western Blot: TOMM20 Antibody (6E0N2) [NBP3-15750] - Western blot analysis of extracts of various cell lines, using TOMM20 antibody (NBP3-15750) at 1:5000 dilution. Secondary antibody: HRP Goat Anti-Rabbit IgG (H+L) at 1:10000 dilution. Lysates/proteins: 25ug per lane. Blocking buffer: 3% nonfat dry milk in TBST. Detection: ECL Basic Kit. Exposure time: 10s.



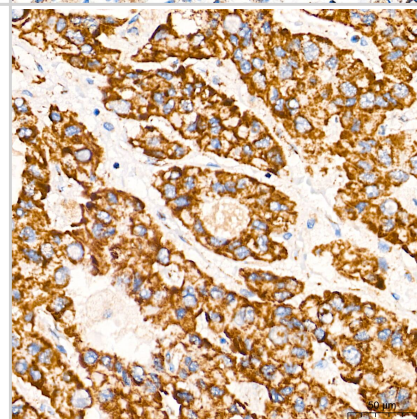
Immunoprecipitation: TOMM20 Antibody (6E0N2) [NBP3-15750] - Immunoprecipitation analysis of 200ug extracts of HeLa cells using 3ug TOMM20 antibody (NBP3-15750). Western blot was performed from the immunoprecipitate using TOMM20 antibody (NBP3-15750) at a dilution of 1:1000.



Immunohistochemistry: TOMM20 Antibody (10G6I8) [TOMM20] - Immunohistochemistry analysis of paraffin-embedded Mouse lung tissue using TOMM20 Rabbit mAb at a dilution of 1:5000 (40x lens). High pressure antigen retrieval performed with 0.01M Tris-EDTA Buffer (pH 9.0) prior to IHC staining.



Immunohistochemistry: TOMM20 Antibody (10G6I8) [TOMM20] - Immunohistochemistry analysis of paraffin-embedded Human liver cancer tissue using TOMM20 Rabbit mAb at a dilution of 1:5000 (40x lens). High pressure antigen retrieval performed with 0.01M Tris-EDTA Buffer (pH 9.0) prior to IHC staining.



Western Blot: TOMM20 Antibody (10G6I8) [TOMM20] - Western blot analysis of lysates from HeLa cells using TOMM20 Rabbit mAb at 1:10000-1:640000 dilution incubated overnight at 4C.

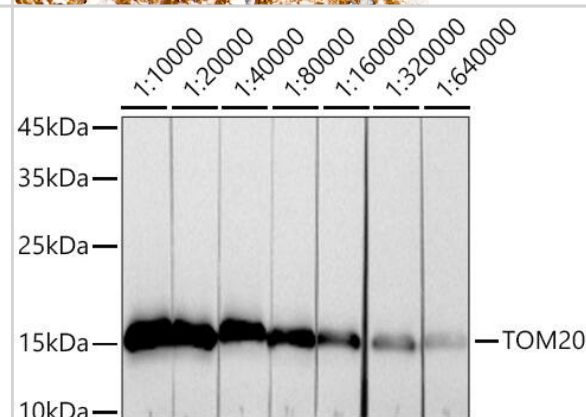
Secondary antibody: HRP-conjugated Goat anti-Rabbit IgG (H+L) at 1:10000 dilution.

Lysates/proteins: 25 ug per lane.

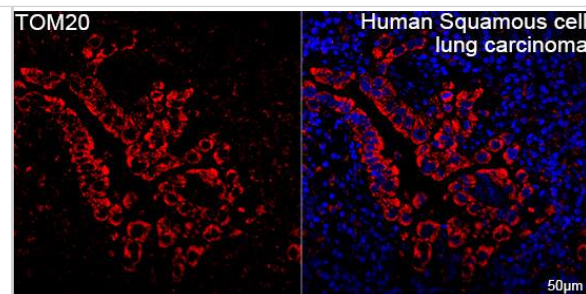
Blocking buffer: 3% nonfat dry milk in TBST.

Detection: ECL Basic Kit .

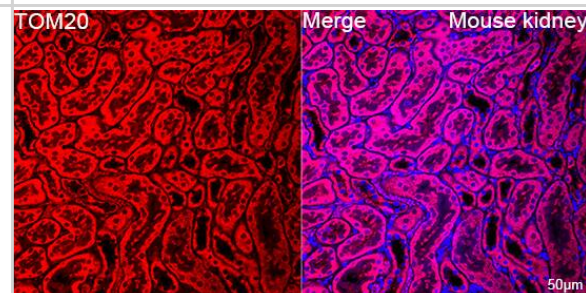
Exposure time: 30s.



Immunocytochemistry/ Immunofluorescence: TOMM20 Antibody (10G6I8) [TOMM20] - Confocal imaging of paraffin-embedded Human squamous cell lung carcinoma tissue using TOMM20 Rabbit mAb followed by a further incubation with Cy3 Goat Anti-Rabbit IgG (H+L) . DAPI was used for nuclear staining (Blue). High pressure antigen retrieval performed with 0.01M Citrate Buffer (pH 6.0) prior to IF staining. Objective: 40x.



Immunocytochemistry/ Immunofluorescence: TOMM20 Antibody (10G6I8) [TOMM20] - Confocal imaging of paraffin-embedded Mouse kidney using TOMM20 Rabbit mAb followed by a further incubation with Cy3 Goat Anti-Rabbit IgG (H+L) . DAPI was used for nuclear staining (Blue). Objective: 40x. Perform high pressure antigen retrieval with 0.01 M citrate buffer (pH 6.0) prior to IF staining.



Western Blot: TOMM20 Antibody (10G6I8) [TOMM20] - Western blot analysis of various lysates using TOMM20 Rabbit mAb at 1:5000 dilution incubated overnight at 4C.

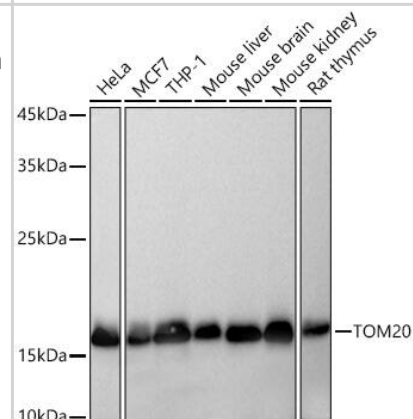
Secondary antibody: HRP-conjugated Goat anti-Rabbit IgG (H+L) at 1:10000 dilution.

Lysates/proteins: 25 ug per lane.

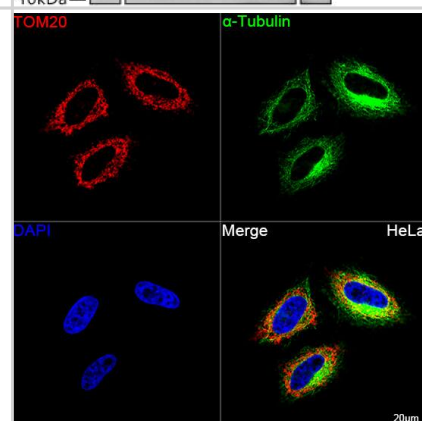
Blocking buffer: 3% nonfat dry milk in TBST.

Detection: ECL Basic Kit .

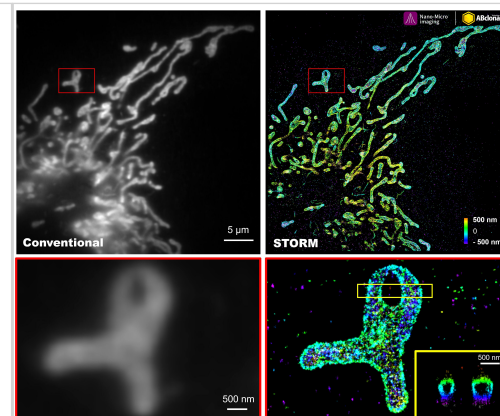
Exposure time: 10s.



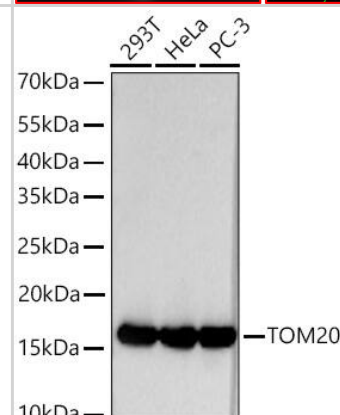
Immunocytochemistry/ Immunofluorescence: TOMM20 Antibody (10G6I8) [TOMM20] - Confocal imaging of HeLa cells using TOMM20 Rabbit mAb followed by a further incubation with Cy3 Goat Anti-Rabbit IgG (H+L) . The cells were counterstained with alpha-Tubulin Mouse mAb followed by incubation with ABflo 488-conjugated Goat Anti-Mouse IgG (H+L) Ab (Green). DAPI was used for nuclear staining (Blue). Objective: 100x.



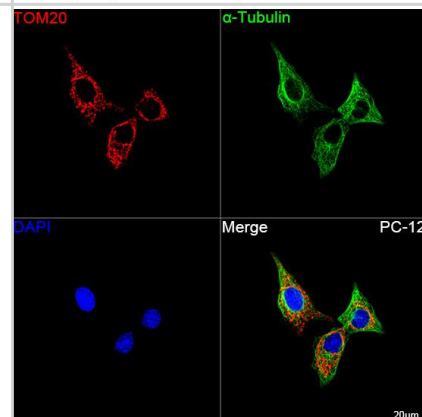
Immunocytochemistry/ Immunofluorescence: TOMM20 Antibody (10G6I8) [TOMM20] - The STORM super-resolution (SR) imaging of COS7 cells using TOMM20 Rabbit mAb at dilution of 1:200 with 3% paraformaldehyde (PFA) +0.1% glutaraldehyde (GA) fixation. The immunostaining was performed by Full Automatic Immunofluorescence Workflow System (Workflow Ultra300, Nano-Micro imaging, China). Image was performed with Single-Molecule Localization Super-Resolution Microscopy (STORM Ultra300, Nano-Micro imaging, China). We acknowledge Nano-Micro imaging Biotechnology Co., Ltd. in SR image processing and kindly providing this image.



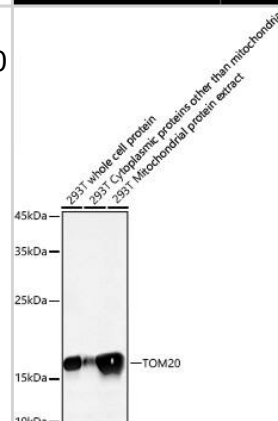
Western Blot: TOMM20 Antibody (10G6I8) [TOMM20] - Western blot analysis of various lysates using TOMM20 Rabbit mAb at 1:20000 dilution incubated overnight at 4C.
 Secondary antibody: HRP-conjugated Goat anti-Rabbit IgG (H+L) at 1:10000 dilution.
 Lysates/proteins: 25 ug per lane.
 Blocking buffer: 3% nonfat dry milk in TBST.
 Detection: ECL Basic Kit .
 Exposure time: 30s.



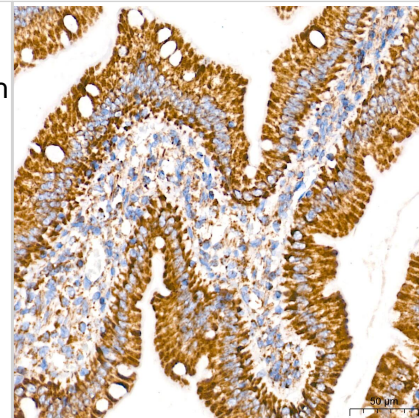
Immunocytochemistry/ Immunofluorescence: TOMM20 Antibody (10G6I8) [TOMM20] - Confocal imaging of PC-12 cells using TOMM20 Rabbit mAb followed by a further incubation with Cy3 Goat Anti-Rabbit IgG (H+L) . The cells were counterstained with alpha-Tubulin Mouse mAb followed by incubation with ABflo 488-conjugated Goat Anti-Mouse IgG (H+L) Ab (Green). DAPI was used for nuclear staining (Blue). Objective: 100x.



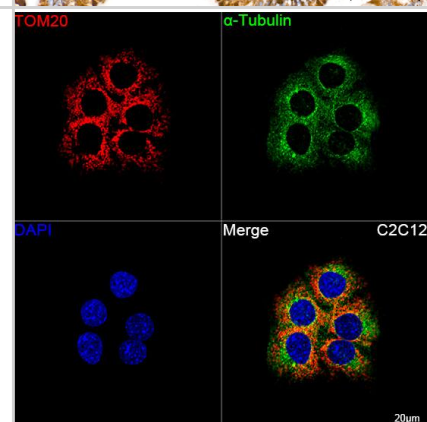
Western Blot: TOMM20 Antibody (10G6I8) [TOMM20] - Western blot analysis of lysates from 293T cells using TOMM20 Rabbit mAb at 1:5000 dilution incubated overnight at 4C.
 Secondary antibody: HRP-conjugated Goat anti-Rabbit IgG (H+L) at 1:10000 dilution.
 Lysates/proteins: 25 ug per lane.
 Blocking buffer: 3% nonfat dry milk in TBST.
 Detection: ECL Basic Kit .
 Exposure time: 10s.



Immunohistochemistry: TOMM20 Antibody (10G6I8) [TOMM20] - Immunohistochemistry analysis of paraffin-embedded Rat intestine tissue using TOMM20 Rabbit mAb at a dilution of 1:5000 (40x lens). High pressure antigen retrieval performed with 0.01M Tris-EDTA Buffer (pH 9.0) prior to IHC staining.



Immunocytochemistry/ Immunofluorescence: TOMM20 Antibody (10G6I8) [TOMM20] - Confocal imaging of C2C12 cells using TOMM20 Rabbit mAb followed by a further incubation with Cy3 Goat Anti-Rabbit IgG (H+L) . The cells were counterstained with alpha-Tubulin Mouse mAb followed by incubation with ABflo 488-conjugated Goat Anti-Mouse IgG (H+L) Ab (Green). DAPI was used for nuclear staining (Blue). Objective: 100x.





Novus Biologicals USA

10730 E. Briarwood Avenue
Centennial, CO 80112
USA
Phone: 303.730.1950
Toll Free: 1.888.506.6887
Fax: 303.730.1966
nb-customerservice@bio-techne.com

Bio-Techne Canada

21 Canmotor Ave
Toronto, ON M8Z 4E6
Canada
Phone: 905.827.6400
Toll Free: 855.668.8722
Fax: 905.827.6402
canada.inquires@bio-techne.com

Bio-Techne Ltd

19 Barton Lane
Abingdon Science Park
Abingdon, OX14 3NB, United Kingdom
Phone: (44) (0) 1235 529449
Free Phone: 0800 37 34 15
Fax: (44) (0) 1235 533420
info.EMEA@bio-techne.com

General Contact Information

www.novusbio.com
Technical Support: nb-technical@bio-techne.com
Orders: nb-customerservice@bio-techne.com
General: novus@novusbio.com

Products Related to NBP3-15750-100ul

HAF008	Goat anti-Rabbit IgG Secondary Antibody [HRP]
NB7160	Goat anti-Rabbit IgG (H+L) Secondary Antibody [HRP]
NBP2-24891	Rabbit IgG Isotype Control
NBP2-22883	Recombinant Human TOMM20 His Protein

Limitations

This product is for research use only and is not approved for use in humans or in clinical diagnosis. Primary Antibodies are guaranteed for 1 year from date of receipt.

For more information on our 100% guarantee, please visit www.novusbio.com/guarantee

Earn gift cards/discounts by submitting a review: www.novusbio.com/reviews/submit/NBP3-15750

Earn gift cards/discounts by submitting a publication using this product:
www.novusbio.com/publications

