

Product Datasheet

SLC6A4/5-HTTLPR/Serotonin transporter Antibody (5T7M2) NBP3-15668-100ul

Unit Size: 100 ul

Store at -20C. Avoid freeze-thaw cycles.

www.novusbio.com



technical@novusbio.com

Protocols, Publications, Related Products, Reviews, Research Tools and Images at:
www.novusbio.com/NBP3-15668

Updated 7/31/2025 v.20.1

Earn rewards for product
reviews and publications.

Submit a publication at www.novusbio.com/publications

Submit a review at www.novusbio.com/reviews/destination/NBP3-15668



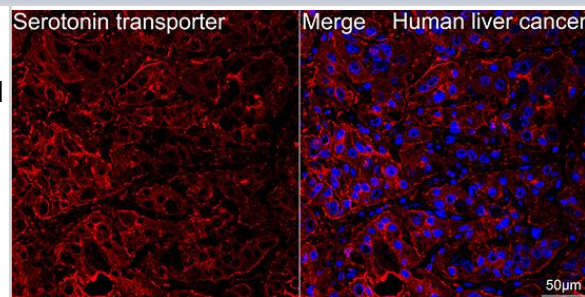
NBP3-15668-100ul**SLC6A4/5-HTTLPR/Serotonin transporter Antibody (5T7M2)**

Product Information	
Unit Size	100 ul
Concentration	Please see the vial label for concentration. If unlisted please contact technical services.
Storage	Store at -20C. Avoid freeze-thaw cycles.
Clonality	Monoclonal
Clone	5T7M2
Preservative	0.02% Sodium Azide
Isotype	IgG
Purity	Affinity purified
Buffer	PBS (pH 7.3), 50% glycerol, 0.05% BSA
Product Description	
Host	Rabbit
Gene ID	6532
Gene Symbol	SLC6A4
Species	Human, Rat
Immunogen	A synthetic peptide corresponding to a sequence within amino acids 1-100 of human SLC6A4/5-HTTLPR/Serotonin transporter (NP_001036.1). METTPLNSQKQLSACEDGEDCQENGVLQKVPTPGDKVESGQISNGYSAPPS PGAGDDTRHSIPATTTTLVAELHQGERETWGKKVDFLLSVIGYAVDLG
Product Application Details	
Applications	Western Blot, Immunocytochemistry/ Immunofluorescence
Recommended Dilutions	Western Blot 1:500 - 1:1000, Immunocytochemistry/ Immunofluorescence 1:50 - 1:200



Images

Immunocytochemistry/ Immunofluorescence: SLC6A4/5-HTTLPR/Serotonin transporter Antibody (5T7M2) [SLC6A4/5-HTTLPR/Serotonin transporter] - Confocal imaging of paraffin-embedded Human liver cancer tissue using SLC6A4/5-HTTLPR/Serotonin transporter Rabbit mAb followed by a further incubation with Cy3 Goat Anti-Rabbit IgG (H+L) . DAPI was used for nuclear staining (Blue). Objective: 40x. Perform high pressure antigen retrieval with 0.01 M citrate buffer (pH 6.0) prior to IF staining.



Western Blot: SLC6A4/5-HTTLPR/Serotonin transporter Antibody (5T7M2) [SLC6A4/5-HTTLPR/Serotonin transporter] - Western blot analysis of rat brain using SLC6A4/5-HTTLPR/Serotonin transporter Rabbit mAb at 1:1000 dilution.

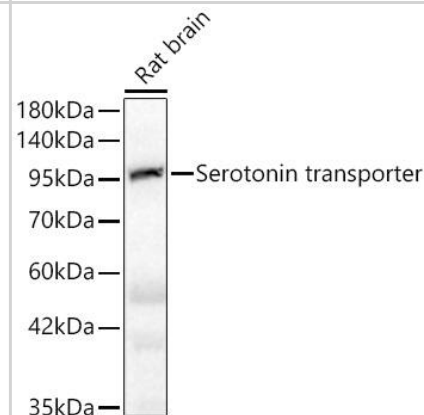
Secondary antibody: HRP Goat Anti-Rabbit IgG (H+L) at 1:10000 dilution.

Lysates/proteins: 25ug per lane.

Blocking buffer: 3% nonfat dry milk in TBST.

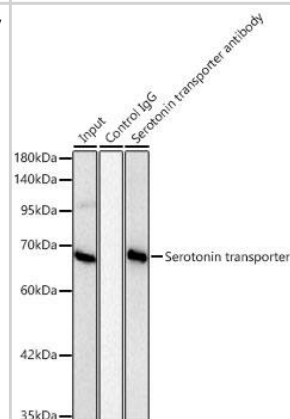
Detection: ECL Basic Kit .

Exposure time: 5s.



Immunoprecipitation: SLC6A4/5-HTTLPR/Serotonin transporter Antibody (5T7M2) [SLC6A4/5-HTTLPR/Serotonin transporter] -

Immunoprecipitation of SLC6A4/5-HTTLPR/Serotonin transporter from 500 ug extracts of HT-29 cells was performed using 2 ug of SLC6A4/5-HTTLPR/Serotonin transporter Rabbit mAb . Rabbit IgG isotype control was used to precipitate the Control IgG sample. IP samples were eluted with 1X Laemmli Buffer. The Input lane represents 10% of the total input. Western blot analysis of immunoprecipitates was conducted using SLC6A4/5-HTTLPR/Serotonin transporter Rabbit mAb at a dilution of 1:1000.





Novus Biologicals USA

10730 E. Briarwood Avenue
Centennial, CO 80112
USA
Phone: 303.730.1950
Toll Free: 1.888.506.6887
Fax: 303.730.1966
nb-customerservice@bio-techne.com

Bio-Techne Canada

21 Canmotor Ave
Toronto, ON M8Z 4E6
Canada
Phone: 905.827.6400
Toll Free: 855.668.8722
Fax: 905.827.6402
canada.inquires@bio-techne.com

Bio-Techne Ltd

19 Barton Lane
Abingdon Science Park
Abingdon, OX14 3NB, United Kingdom
Phone: (44) (0) 1235 529449
Free Phone: 0800 37 34 15
Fax: (44) (0) 1235 533420
info.EMEA@bio-techne.com

General Contact Information

www.novusbio.com
Technical Support: nb-technical@bio-techne.com
Orders: nb-customerservice@bio-techne.com
General: novus@novusbio.com

Products Related to NBP3-15668-100ul

HAF008	Goat anti-Rabbit IgG Secondary Antibody [HRP]
NB7160	Goat anti-Rabbit IgG (H+L) Secondary Antibody [HRP]
NBP2-24891	Rabbit IgG Isotype Control
NBP2-57729PEP	SLC6A4/5-HTTLPR/Serotonin transporter Recombinant Protein Antigen

Limitations

This product is for research use only and is not approved for use in humans or in clinical diagnosis. Primary Antibodies are guaranteed for 1 year from date of receipt.

For more information on our 100% guarantee, please visit www.novusbio.com/guarantee

Earn gift cards/discounts by submitting a review: www.novusbio.com/reviews/submit/NBP3-15668

Earn gift cards/discounts by submitting a publication using this product:
www.novusbio.com/publications

