

# Product Datasheet

## ATP5A Antibody (6M3B8)

### NBP3-15355-100ul

Unit Size: 100 ul

Store at -20C. Avoid freeze-thaw cycles.

[www.novusbio.com](http://www.novusbio.com)



[technical@novusbio.com](mailto:technical@novusbio.com)

Protocols, Publications, Related Products, Reviews, Research Tools and Images at:  
[www.novusbio.com/NBP3-15355](http://www.novusbio.com/NBP3-15355)

Updated 7/31/2025 v.20.1

Earn rewards for product  
reviews and publications.

Submit a publication at [www.novusbio.com/publications](http://www.novusbio.com/publications)

Submit a review at [www.novusbio.com/reviews/destination/NBP3-15355](http://www.novusbio.com/reviews/destination/NBP3-15355)



**NBP3-15355-100ul**

ATP5A Antibody (6M3B8)

**Product Information**

<b>Unit Size</b>	100 ul
<b>Concentration</b>	Please see the vial label for concentration. If unlisted please contact technical services.
<b>Storage</b>	Store at -20C. Avoid freeze-thaw cycles.
<b>Clonality</b>	Monoclonal
<b>Clone</b>	6M3B8
<b>Preservative</b>	0.02% Sodium Azide
<b>Isotype</b>	IgG
<b>Purity</b>	Affinity purified
<b>Buffer</b>	PBS (pH 7.3), 50% glycerol, 0.05% BSA
<b>Target Molecular Weight</b>	60 kDa

**Product Description**

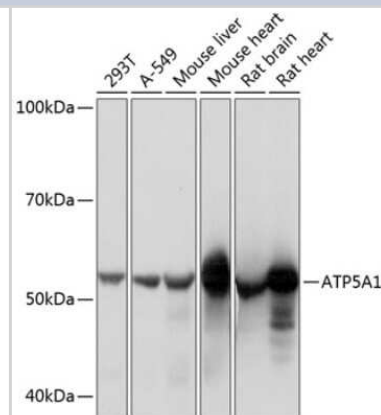
<b>Host</b>	Rabbit
<b>Gene ID</b>	498
<b>Gene Symbol</b>	ATP5F1A
<b>Species</b>	Human, Mouse, Rat
<b>Immunogen</b>	A synthetic peptide corresponding to a sequence within amino acids 200-300 of human ATP5A (P25705). VPIGRGQRELIIGDRQTGKTSIAIDTIINQKRFDNGSDEKKKLYCIYVAIGQKRSTV AQLVKRLTDADAMKYTIVVSATASDAAPLQYLAPYSGCSMGEYF

**Product Application Details**

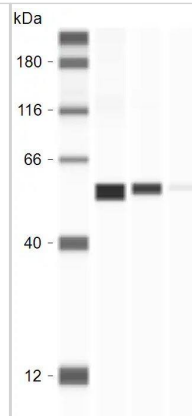
<b>Applications</b>	Western Blot, Simple Western, Immunohistochemistry-Paraffin, ELISA, Immunocytochemistry/ Immunofluorescence, Immunohistochemistry, Immunoprecipitation
<b>Recommended Dilutions</b>	Western Blot 1:1000 - 1:6000, Simple Western Validated from a verified customer review, ELISA ,Recommended starting concentration is 1 µg/mL. Please optimize the concentration based on your specific assay requirements., Immunohistochemistry 1:200 - 1:2000, Immunocytochemistry/ Immunofluorescence 1:200 - 1:2000, Immunoprecipitation 0.5µg-4µg antibody for 400µg-600µg extracts of whole cells, Immunohistochemistry-Paraffin 1:200 - 1:2000

**Images**

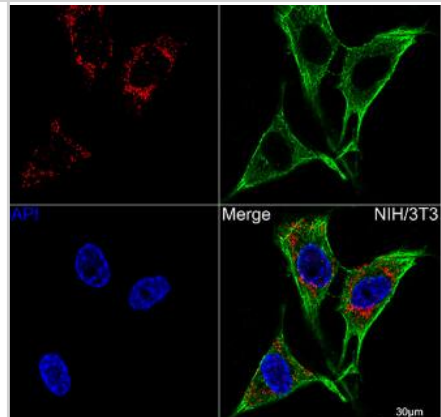
Western Blot: ATP5A Antibody (6M3B8) [NBP3-15355] - Analysis of extracts of various cell lines, using ATP5A Rabbit mAb (NBP3-15355) at 1:1000 dilution. Secondary antibody: HRP Goat Anti-Rabbit IgG (H+L) at 1:10000 dilution. Lysates/proteins: 25ug per lane. Blocking buffer: 3% nonfat dry milk in TBST. Detection: ECL Basic Kit. Exposure time: 1s.



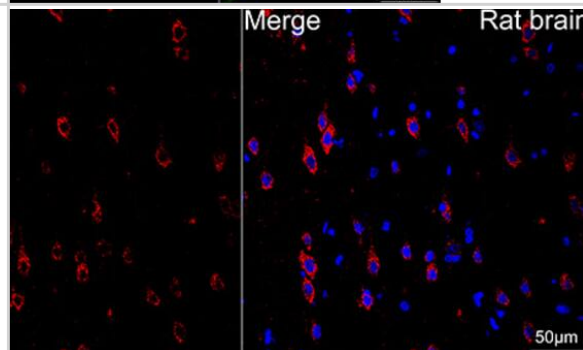
**Simple Western: ATP5A Antibody (6M3B8) [NBP3-15355] - ATP5A Antibodies (NBP3-15355), ProteinSimple Western Blot on Jess Instrument;** 1, 0.5, and 0.2 microgram of human brain tissue lysate was tested with the antibodies diluted 20 times. Image from verified customer review.



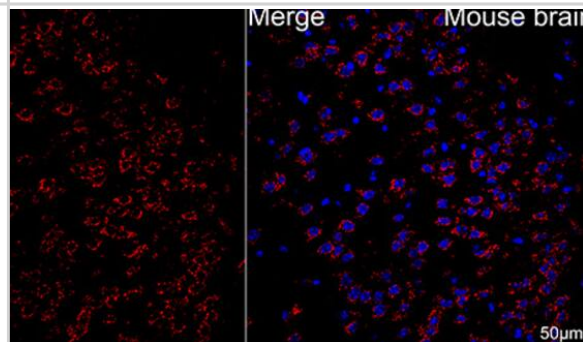
**Immunocytochemistry/Immunofluorescence: ATP5A Antibody (6M3B8) [NBP3-15355] - Confocal imaging of NIH/3T3 cells using ATP5A1 Rabbit mAb (dilution 1:200) followed by a further incubation with Cy3 Goat Anti-Rabbit IgG (H+L) (dilution 1:500) (Red). The cells were counterstained with  $\alpha$ -Tubulin Mouse mAb (dilution 1:400) followed by incubation with ABflo® 488-conjugated Goat Anti-Mouse IgG (H+L) Ab (dilution 1:500) (Green). DAPI was used for nuclear staining (Blue). Objective: 100x.**



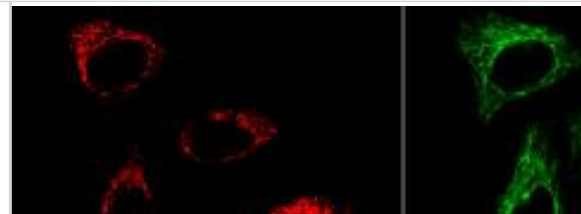
**Immunohistochemistry-Paraffin: ATP5A Antibody (6M3B8) [NBP3-15355] -Rat brain tissue using ATP5A1 Rabbit mAb (dilution 1:200) followed by a further incubation with Cy3 Goat Anti-Rabbit IgG (H+L) (dilution 1:500) (Red). DAPI was used for nuclear staining (Blue). Objective: 40x. Perform microwave antigen retrieval with 0.01 M citrate buffer (pH 6.0) prior to IF staining.**



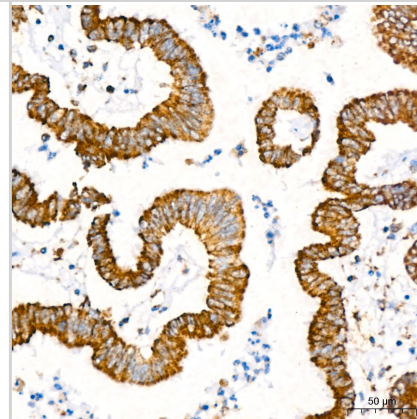
**Immunohistochemistry-Paraffin: ATP5A Antibody (6M3B8) [NBP3-15355] - Mouse brain tissue using ATP5A1 Rabbit mAb (dilution 1:200) followed by a further incubation with Cy3 Goat Anti-Rabbit IgG (H+L) (dilution 1:500) (Red). DAPI was used for nuclear staining (Blue). Objective: 40x. Perform microwave antigen retrieval with 0.01 M citrate buffer (pH 6.0) prior to IF staining.**



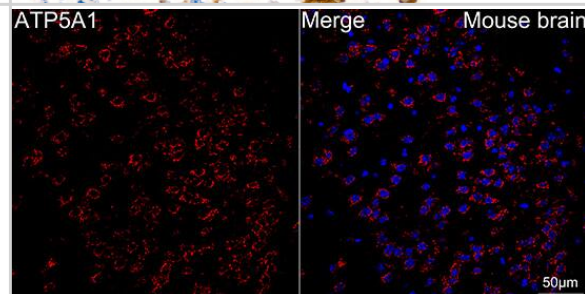
**Immunocytochemistry/Immunofluorescence: ATP5A Antibody (6M3B8) [NBP3-15355]** - Confocal imaging of HeLa cells using ATP5A1 Rabbit mAb (dilution 1:200) followed by a further incubation with Cy3 Goat Anti-Rabbit IgG (H+L) (dilution 1:500) (Red). The cells were counterstained with  $\alpha$ -Tubulin Mouse mAb (dilution 1:400) followed by incubation with ABflo® 488-conjugated Goat Anti-Mouse IgG (H+L) Ab (dilution 1:500) (Green). DAPI was used for nuclear staining (Blue). Objective: 100x.



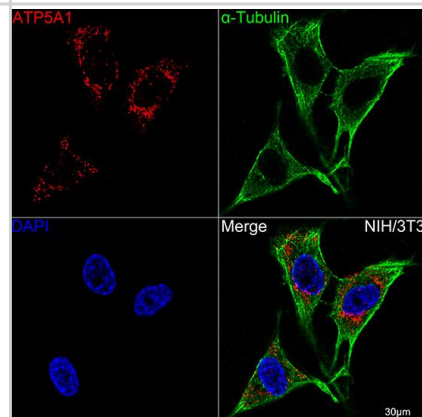
**Immunohistochemistry: ATP5A Antibody (6M3B8) [ATP5A]** - Immunohistochemistry analysis of paraffin-embedded Human colon carcinoma tissue using ATP5A Rabbit mAb at dilution of 1:200 (40x lens). High pressure antigen retrieval performed with 0.01M Citrate Bufferr (pH 6.0) prior to IHC staining.



**Immunocytochemistry/ Immunofluorescence: ATP5A Antibody (6M3B8) [ATP5A]** - Confocal imaging of paraffin-embedded Mouse brain tissue using ATP5A Rabbit mAb followed by a further incubation with Cy3 Goat Anti-Rabbit IgG (H+L) . DAPI was used for nuclear staining (Blue). Objective: 40x. Perform microwave antigen retrieval with 0.01 M citrate buffer (pH 6.0) prior to IF staining.

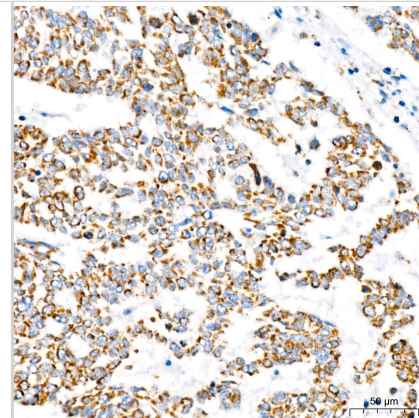


**Immunocytochemistry/ Immunofluorescence: ATP5A Antibody (6M3B8) [ATP5A]** - Confocal imaging of NIH/3T3 cells using ATP5A Rabbit mAb followed by a further incubation with Cy3 Goat Anti-Rabbit IgG (H+L) . The cells were counterstained with alpha-Tubulin Mouse mAb followed by incubation with ABflo 488-conjugated Goat Anti-Mouse IgG (H+L) Ab (Green). DAPI was used for nuclear staining (Blue). Objective: 100x.

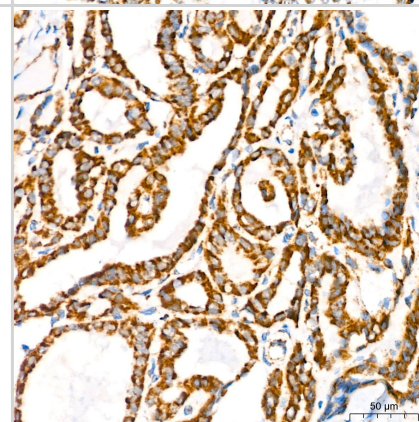




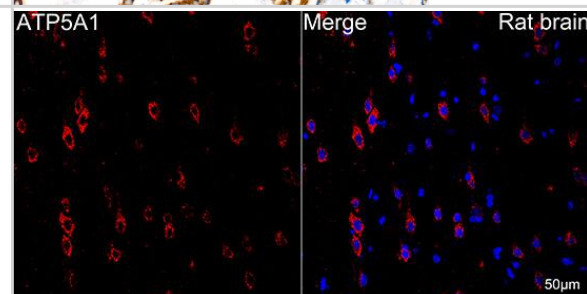
**Immunohistochemistry: ATP5A Antibody (6M3B8) [ATP5A]** - Immunohistochemistry analysis of paraffin-embedded Human lung squamous carcinoma tissue using ATP5A Rabbit mAb at dilution of 1:200 (40x lens). High pressure antigen retrieval performed with 0.01M Citrate Bufferr (pH 6.0) prior to IHC staining.



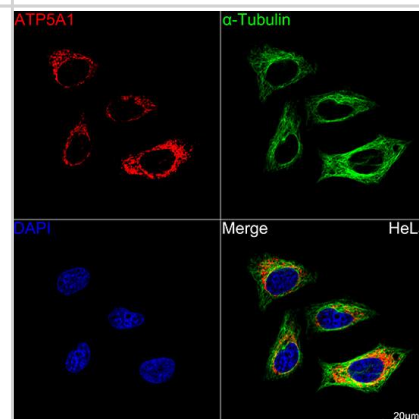
**Immunohistochemistry: ATP5A Antibody (6M3B8) [ATP5A]** - Immunohistochemistry analysis of paraffin-embedded Human thyroid cancer tissue using ATP5A Rabbit mAb at dilution of 1:200 (40x lens). High pressure antigen retrieval performed with 0.01M Citrate Bufferr (pH 6.0) prior to IHC staining.



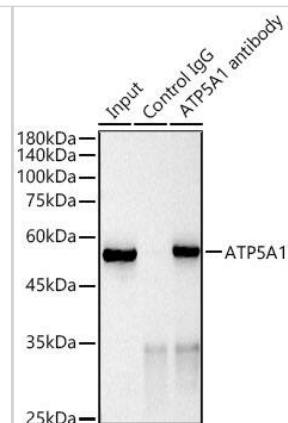
**Immunocytochemistry/ Immunofluorescence: ATP5A Antibody (6M3B8) [ATP5A]** - Confocal imaging of paraffin-embedded Rat brain tissue using ATP5A Rabbit mAb followed by a further incubation with Cy3 Goat Anti-Rabbit IgG (H+L) . DAPI was used for nuclear staining (Blue). Objective: 40x. Perform microwave antigen retrieval with 0.01 M citrate buffer (pH 6.0) prior to IF staining.



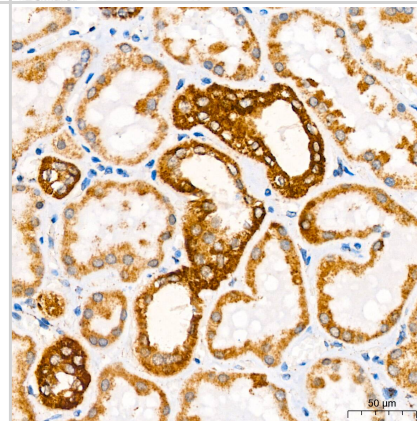
**Immunocytochemistry/ Immunofluorescence: ATP5A Antibody (6M3B8) [ATP5A]** - Confocal imaging of HeLa cells using ATP5A Rabbit mAb followed by a further incubation with Cy3 Goat Anti-Rabbit IgG (H+L) . The cells were counterstained with alpha-Tubulin Mouse mAb followed by incubation with ABflo 488-conjugated Goat Anti-Mouse IgG (H+L) Ab (Green). DAPI was used for nuclear staining (Blue). Objective: 100x.



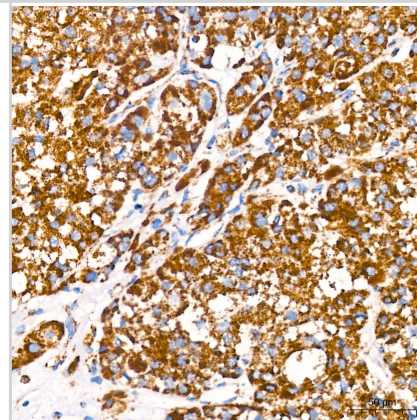
**Immunoprecipitation: ATP5A Antibody (6M3B8) [ATP5A] -**  
**Immunoprecipitation analysis of 600 ug extracts of Mouse heart using 3 ug ATP5A antibody . Western blot was performed from the immunoprecipitate using ATP5A antibody at a dilution of 1:1000.**



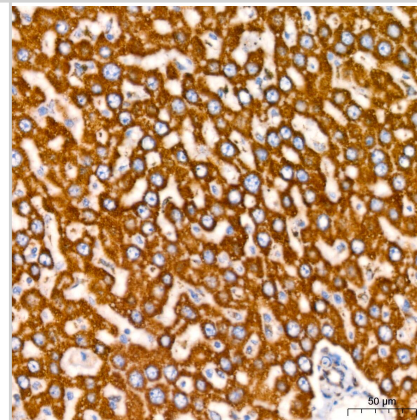
**Immunohistochemistry: ATP5A Antibody (6M3B8) [ATP5A] -**  
**Immunohistochemistry analysis of paraffin-embedded Human kidney tissue using ATP5A Rabbit mAb at dilution of 1:200 (40x lens). High pressure antigen retrieval performed with 0.01M Citrate Bufferr (pH 6.0) prior to IHC staining.**



**Immunohistochemistry: ATP5A Antibody (6M3B8) [ATP5A] -**  
**Immunohistochemistry analysis of paraffin-embedded Human liver cancer tissue using ATP5A Rabbit mAb at dilution of 1:200 (40x lens). High pressure antigen retrieval performed with 0.01M Citrate Bufferr (pH 6.0) prior to IHC staining.**



**Immunohistochemistry: ATP5A Antibody (6M3B8) [ATP5A] -**  
**Immunohistochemistry analysis of paraffin-embedded Rat liver tissue using ATP5A Rabbit mAb at dilution of 1:200 (40x lens). High pressure antigen retrieval performed with 0.01M Citrate Bufferr (pH 6.0) prior to IHC staining.**





### **Novus Biologicals USA**

10730 E. Briarwood Avenue  
Centennial, CO 80112  
USA  
Phone: 303.730.1950  
Toll Free: 1.888.506.6887  
Fax: 303.730.1966  
nb-customerservice@bio-techne.com

### **Bio-Techne Canada**

21 Canmotor Ave  
Toronto, ON M8Z 4E6  
Canada  
Phone: 905.827.6400  
Toll Free: 855.668.8722  
Fax: 905.827.6402  
canada.inquires@bio-techne.com

### **Bio-Techne Ltd**

19 Barton Lane  
Abingdon Science Park  
Abingdon, OX14 3NB, United Kingdom  
Phone: (44) (0) 1235 529449  
Free Phone: 0800 37 34 15  
Fax: (44) (0) 1235 533420  
info.EMEA@bio-techne.com

### **General Contact Information**

www.novusbio.com  
Technical Support: nb-technical@bio-techne.com  
Orders: nb-customerservice@bio-techne.com  
General: novus@novusbio.com

### **Products Related to NBP3-15355-100ul**

---

HAF008	Goat anti-Rabbit IgG Secondary Antibody [HRP]
NB7160	Goat anti-Rabbit IgG (H+L) Secondary Antibody [HRP]
NBP2-24891	Rabbit IgG Isotype Control
NBP2-38525PEP	ATP5A Recombinant Protein Antigen

---

### **Limitations**

This product is for research use only and is not approved for use in humans or in clinical diagnosis. Primary Antibodies are guaranteed for 1 year from date of receipt.

For more information on our 100% guarantee, please visit [www.novusbio.com/guarantee](http://www.novusbio.com/guarantee)

Earn gift cards/discounts by submitting a review: [www.novusbio.com/reviews/submit/NBP3-15355](http://www.novusbio.com/reviews/submit/NBP3-15355)

Earn gift cards/discounts by submitting a publication using this product:  
[www.novusbio.com/publications](http://www.novusbio.com/publications)

