

Product Datasheet

ATPB Antibody (1H2W2) NBP3-15354-100ul

Unit Size: 100 ul

Store at -20C. Avoid freeze-thaw cycles.

www.novusbio.com



technical@novusbio.com

Protocols, Publications, Related Products, Reviews, Research Tools and Images at:
www.novusbio.com/NBP3-15354

Updated 7/31/2025 v.20.1

Earn rewards for product
reviews and publications.

Submit a publication at www.novusbio.com/publications

Submit a review at www.novusbio.com/reviews/destination/NBP3-15354



NBP3-15354-100ul

ATPB Antibody (1H2W2)

Product Information

Unit Size	100 ul
Concentration	Please see the vial label for concentration. If unlisted please contact technical services.
Storage	Store at -20C. Avoid freeze-thaw cycles.
Clonality	Monoclonal
Clone	1H2W2
Preservative	0.05% Proclin 300
Isotype	IgG
Purity	Affinity purified
Buffer	PBS (pH 7.3), 50% glycerol, 0.05% BSA

Product Description

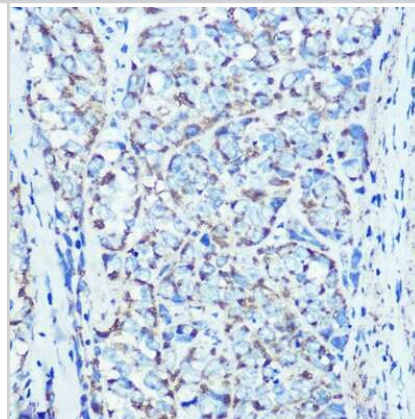
Host	Rabbit
Gene ID	506
Gene Symbol	ATP5F1B
Species	Human, Mouse, Rat
Immunogen	Recombinant fusion protein containing a sequence corresponding to amino acids 230-529 of human ATPB (NP_001677.2). YSVFAGVGERTREGNDLYHEMIESGVINLKDATSKVALVYGQMNEPPGARARV ALTGLTVAEYFRDQEGQDVLLFIDNIFRFTQAGSEVSALLGRIPSAVGYQPTLAT DMGTMQERITTTKKSITSVQAIYVPADDLTDPAPATTFAHLDATTVLSRAIAEL GIYPAVDPLDSTSRIMDPNIVGSEHYDVARGVQKILQDYKSLQDIIAILGMDELSE EDKLTVSRARKIQRFLSQPFQVAEVFTGHMGKLVPLKETIKGFQQILAGEYDHL PEQAFYMGPIEEAVAKADKLAEEHSS

Product Application Details

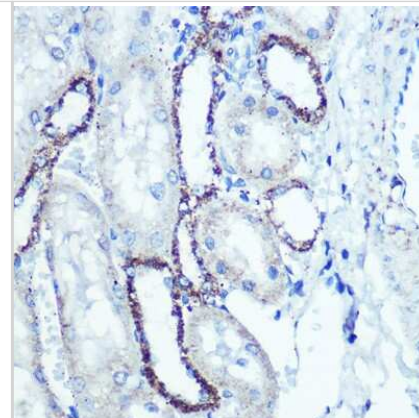
Applications	Western Blot, Immunohistochemistry-Paraffin, Immunocytochemistry/ Immunofluorescence, Immunohistochemistry
Recommended Dilutions	Western Blot 1:3000 - 1:20000, Immunohistochemistry 1:50 - 1:200, Immunocytochemistry/ Immunofluorescence 1:50 - 1:200, Immunohistochemistry-Paraffin

Images

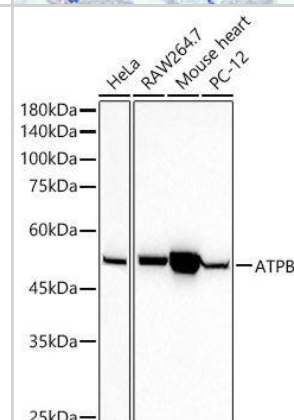
Immunohistochemistry-Paraffin: ATPB Antibody (9A1O2) [NBP3-15354]
- Immunohistochemistry of paraffin-embedded human esophageal cancer using ATPB Rabbit mAb (NBP3-15354) at dilution of 1:100 (40x lens). Perform microwave antigen retrieval with 10 mM PBS buffer pH 7.2 before commencing with IHC staining protocol.



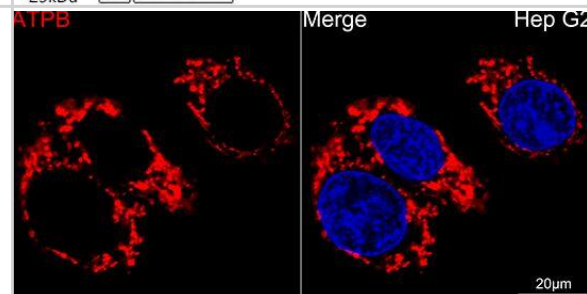
Immunohistochemistry-Paraffin: ATPB Antibody (9A1O2) [NBP3-15354]
 - Immunohistochemistry of paraffin-embedded rat kidney using ATPB Rabbit mAb (NBP3-15354) at dilution of 1:100 (40x lens). Perform microwave antigen retrieval with 10 mM PBS buffer pH 7.2 before commencing with IHC staining protocol.



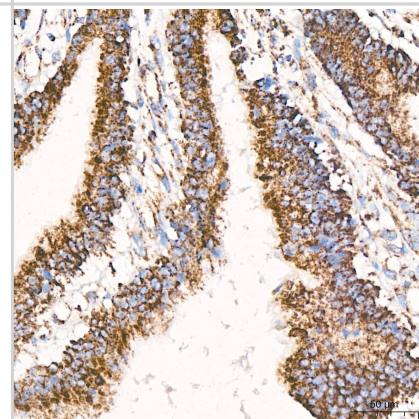
Western Blot: ATPB Antibody (9A1O2) [NBP3-15354] - analysis of extracts of various cell lines, using ATPB antibody at 1:20000 dilution. Secondary antibody: HRP Goat Anti-Rabbit IgG (H+L) at 1:10000 dilution. Lysates/proteins: 25ug per lane. Blocking buffer: 3% nonfat dry milk in TBST. Detection: ECL Basic Kit. Exposure time: 10s.



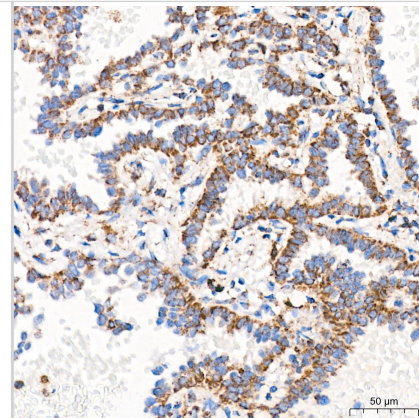
Immunocytochemistry/Immunofluorescence: ATPB Antibody (9A1O2) [NBP3-15354] - HepG2 cells using ATPB Rabbit mAb (dilution 1:100) (Red). DAPI was used for nuclear staining (blue). Objective: 40x.



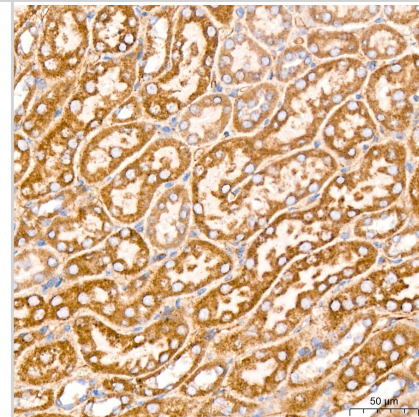
Immunohistochemistry: ATPB Antibody (1H2W2) [ATPB] - Immunohistochemistry analysis of ATPB in paraffin-embedded human colon carcinoma tissue using ATPB Rabbit mAb at a dilution of 1:200 (40x lens). High pressure antigen retrieval was performed with 0.01 M citrate buffer (pH 6.0) prior to IHC staining.



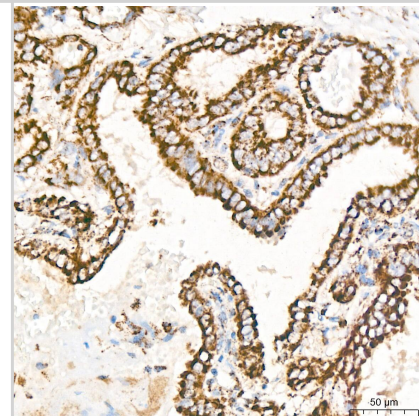
Immunohistochemistry: ATPB Antibody (1H2W2) [ATPB] -
Immunohistochemistry analysis of ATPB in paraffin-embedded Human lung adenocarcinoma tissue using ATPB Rabbit mAb at a dilution of 1:200 (40x lens).High pressure antigen retrieval was performed with 0.01 M citrate buffer (pH 6.0) prior to IHC staining.



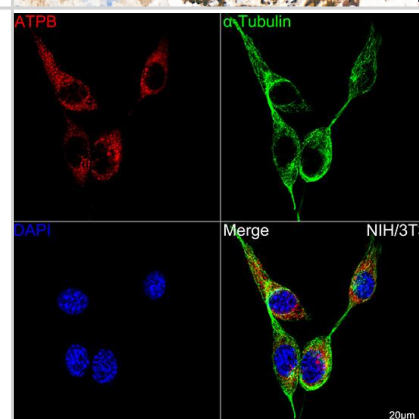
Immunohistochemistry: ATPB Antibody (1H2W2) [ATPB] -
Immunohistochemistry analysis of ATPB in paraffin-embedded mouse kidney tissue using ATPB Rabbit mAb at a dilution of 1:200 (40x lens).High pressure antigen retrieval was performed with 0.01 M citrate buffer (pH 6.0) prior to IHC staining.



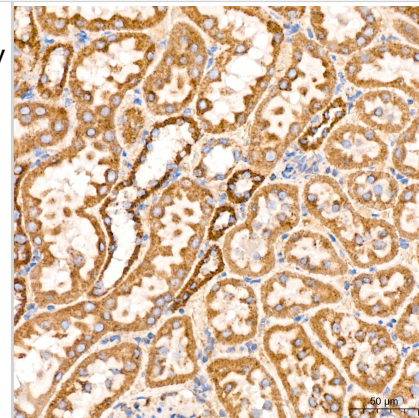
Immunohistochemistry: ATPB Antibody (1H2W2) [ATPB] -
Immunohistochemistry analysis of ATPB in paraffin-embedded human thyroid cancer tissue using ATPB Rabbit mAb at a dilution of 1:200 (40x lens).High pressure antigen retrieval was performed with 0.01 M citrate buffer (pH 6.0) prior to IHC staining.



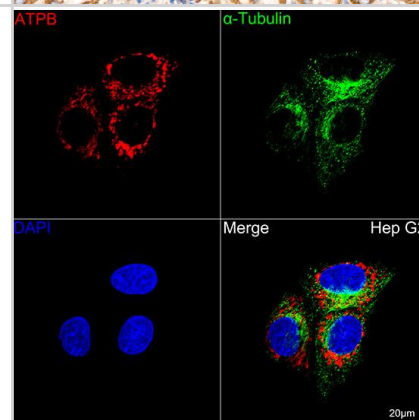
Immunocytochemistry/ Immunofluorescence: ATPB Antibody (1H2W2) [ATPB] - Confocal imaging of NIH/3T3 cells using ATPB Rabbit mAb followed by a further incubation with Cy3 Goat Anti-Rabbit IgG (H+L) . The cells were counterstained with alpha-Tubulin Mouse mAb followed by incubation with ABflo 488-conjugated Goat Anti-Mouse IgG (H+L) Ab (Green). DAPI was used for nuclear staining (Blue). Objective: 100x.



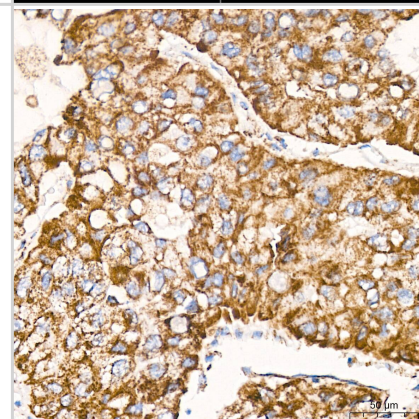
Immunohistochemistry: ATPB Antibody (1H2W2) [ATPB] -
Immunohistochemistry analysis of ATPB in paraffin-embedded rat kidney
 tissue using ATPB Rabbit mAb at a dilution of 1:200 (40x lens).High
 pressure antigen retrieval was performed with 0.01 M citrate buffer (pH
 6.0) prior to IHC staining.



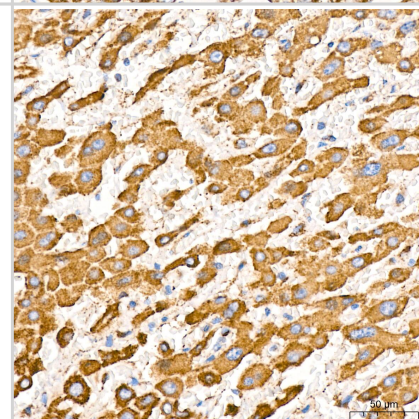
Immunocytochemistry/ Immunofluorescence: ATPB Antibody (1H2W2)
[ATPB] - Confocal imaging of Hep G2 cells using ATPB Rabbit mAb
 followed by a further incubation with Cy3 Goat Anti-Rabbit IgG (H+L) .
 The cells were counterstained with alpha-Tubulin Mouse mAb followed
 by incubation with ABflo 488-conjugated Goat Anti-Mouse IgG (H+L) Ab
 (Green). DAPI was used for nuclear staining (Blue). Objective: 100x.



Immunohistochemistry: ATPB Antibody (1H2W2) [ATPB] -
Immunohistochemistry analysis of ATPB in paraffin-embedded human
 liver cancer tissue using ATPB Rabbit mAb at a dilution of 1:200 (40x
 lens).High pressure antigen retrieval was performed with 0.01 M citrate
 buffer (pH 6.0) prior to IHC staining.



Immunohistochemistry: ATPB Antibody (1H2W2) [ATPB] -
Immunohistochemistry analysis of ATPB in paraffin-embedded human
 liver tissue using ATPB Rabbit mAb at a dilution of 1:200 (40x lens).High
 pressure antigen retrieval was performed with 0.01 M citrate buffer (pH
 6.0) prior to IHC staining.





Novus Biologicals USA

10730 E. Briarwood Avenue
Centennial, CO 80112
USA
Phone: 303.730.1950
Toll Free: 1.888.506.6887
Fax: 303.730.1966
nb-customerservice@bio-techne.com

Bio-Techne Canada

21 Canmotor Ave
Toronto, ON M8Z 4E6
Canada
Phone: 905.827.6400
Toll Free: 855.668.8722
Fax: 905.827.6402
canada.inquires@bio-techne.com

Bio-Techne Ltd

19 Barton Lane
Abingdon Science Park
Abingdon, OX14 3NB, United Kingdom
Phone: (44) (0) 1235 529449
Free Phone: 0800 37 34 15
Fax: (44) (0) 1235 533420
info.EMEA@bio-techne.com

General Contact Information

www.novusbio.com
Technical Support: nb-technical@bio-techne.com
Orders: nb-customerservice@bio-techne.com
General: novus@novusbio.com

Products Related to NBP3-15354-100ul

HAF008	Goat anti-Rabbit IgG Secondary Antibody [HRP]
NB7160	Goat anti-Rabbit IgG (H+L) Secondary Antibody [HRP]
NBP2-24891	Rabbit IgG Isotype Control
H00000506-P01-10ug	Recombinant Human ATPB GST (N-Term) Protein

Limitations

This product is for research use only and is not approved for use in humans or in clinical diagnosis. Primary Antibodies are guaranteed for 1 year from date of receipt.

For more information on our 100% guarantee, please visit www.novusbio.com/guarantee

Earn gift cards/discounts by submitting a review: www.novusbio.com/reviews/submit/NBP3-15354

Earn gift cards/discounts by submitting a publication using this product:
www.novusbio.com/publications

