

# Product Datasheet

## GCR2 Antibody (PCRP-ECD-1D10) - Azide and BSA Free NBP3-14278

Unit Size: 100 ug

Store at -20 to -80C. Avoid freeze-thaw cycles.

[www.novusbio.com](http://www.novusbio.com)



[technical@novusbio.com](mailto:technical@novusbio.com)

Protocols, Publications, Related Products, Reviews, Research Tools and Images at:  
[www.novusbio.com/NBP3-14278](http://www.novusbio.com/NBP3-14278)

Updated 7/16/2024 v.20.1

Earn rewards for product  
reviews and publications.

Submit a publication at [www.novusbio.com/publications](http://www.novusbio.com/publications)

Submit a review at [www.novusbio.com/reviews/destination/NBP3-14278](http://www.novusbio.com/reviews/destination/NBP3-14278)



**NBP3-14278**

GCR2 Antibody (PCRP-ECD-1D10) - Azide and BSA Free

**Product Information**

<b>Unit Size</b>	100 ug
<b>Concentration</b>	1 mg/ml
<b>Storage</b>	Store at -20 to -80C. Avoid freeze-thaw cycles.
<b>Clonality</b>	Monoclonal
<b>Clone</b>	PCRP-ECD-1D10
<b>Preservative</b>	No Preservative
<b>Isotype</b>	IgG2b
<b>Purity</b>	Protein A or G purified
<b>Buffer</b>	10mM PBS
<b>Target Molecular Weight</b>	72.76 kDa

**Product Description**

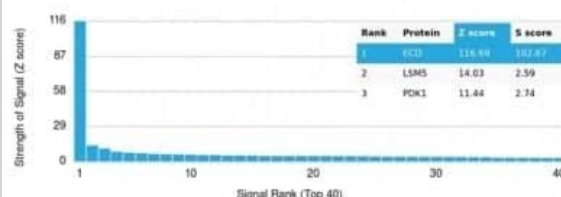
<b>Description</b>	1.0 mg/ml of antibody purified from Bioreactor Concentrate by Protein A/G. Prepared in 10mM PBS WITHOUT BSA & azide. Also available at 200 ug/ml WITH BSA & azide (NBP3-13849).  Antibody with azide - store at 2 to 8C. Antibody without azide - store at -20 to -80 C.
<b>Host</b>	Mouse
<b>Gene ID</b>	11319
<b>Gene Symbol</b>	ECD
<b>Species</b>	Human
<b>Reactivity Notes</b>	Predicted to react with Rabbit, Goat, Equine, Guinea Pig, Canine, Porcine, Rhesus Monkey, Orangutan and Elephant (based on sequence homology).
<b>Immunogen</b>	Recombinant full-length human GCR2 protein (Uniprot: O95905)

**Product Application Details**

<b>Applications</b>	Flow Cytometry, Immunocytochemistry/ Immunofluorescence, Immunoprecipitation, Protein Array
<b>Recommended Dilutions</b>	Flow Cytometry 1-2 ug/million cells, Immunocytochemistry/ Immunofluorescence 1-2 ug/ml, Immunoprecipitation 1-2 ug per 100-500 ug protein, Protein Array

**Images**

Protein Array: GCR2 Antibody (PCRP-ECD-1D10) - Azide and BSA Free [NBP3-14278] - Analysis of Protein Array containing more than 19,000 full-length human proteins using GCR2 Antibody (PCRP-ECD-1D10).





### Novus Biologicals USA

10730 E. Briarwood Avenue  
Centennial, CO 80112  
USA  
Phone: 303.730.1950  
Toll Free: 1.888.506.6887  
Fax: 303.730.1966  
nb-customerservice@bio-techne.com

### Bio-Techne Canada

21 Canmotor Ave  
Toronto, ON M8Z 4E6  
Canada  
Phone: 905.827.6400  
Toll Free: 855.668.8722  
Fax: 905.827.6402  
canada.inquires@bio-techne.com

### Bio-Techne Ltd

19 Barton Lane  
Abingdon Science Park  
Abingdon, OX14 3NB, United Kingdom  
Phone: (44) (0) 1235 529449  
Free Phone: 0800 37 34 15  
Fax: (44) (0) 1235 533420  
info.EMEA@bio-techne.com

### General Contact Information

www.novusbio.com  
Technical Support: nb-technical@bio-techne.com  
Orders: nb-customerservice@bio-techne.com  
General: novus@novusbio.com

### Products Related to NBP3-14278

HAF007	Goat anti-Mouse IgG Secondary Antibody [HRP]
NB720-B	Rabbit anti-Mouse IgG (H+L) Secondary Antibody [Biotin]
NBP2-27231	Mouse IgG2b Isotype Control (MPC-11)
H00011319-P01-10ug	Recombinant Human GCR2 GST (N-Term) Protein

### Limitations

This product is for research use only and is not approved for use in humans or in clinical diagnosis. Primary Antibodies are guaranteed for 1 year from date of receipt.

For more information on our 100% guarantee, please visit [www.novusbio.com/guarantee](http://www.novusbio.com/guarantee)

Earn gift cards/discounts by submitting a review: [www.novusbio.com/reviews/submit/NBP3-14278](http://www.novusbio.com/reviews/submit/NBP3-14278)

Earn gift cards/discounts by submitting a publication using this product:  
[www.novusbio.com/publications](http://www.novusbio.com/publications)

