

Product Datasheet

MEF2D Antibody (PCRP-MEF2D-3A4) NBP3-13967-100ug

Unit Size: 100 ug

Store at 4C.

www.novusbio.com



technical@novusbio.com

Protocols, Publications, Related Products, Reviews, Research Tools and Images at:
www.novusbio.com/NBP3-13967

Updated 7/16/2024 v.20.1

Earn rewards for product
reviews and publications.

Submit a publication at www.novusbio.com/publications

Submit a review at www.novusbio.com/reviews/destination/NBP3-13967



NBP3-13967-100ug

MEF2D Antibody (PCRP-MEF2D-3A4)

| Product Information | |
|-------------------------|--------------------------|
| Unit Size | 100 ug |
| Concentration | 0.2 mg/ml |
| Storage | Store at 4C. |
| Clonality | Monoclonal |
| Clone | PCRP-MEF2D-3A4 |
| Preservative | 0.05% Sodium Azide |
| Isotype | IgG2b |
| Purity | Protein A or G purified |
| Buffer | 10 mM PBS with 0.05% BSA |
| Target Molecular Weight | 55.94 kDa |

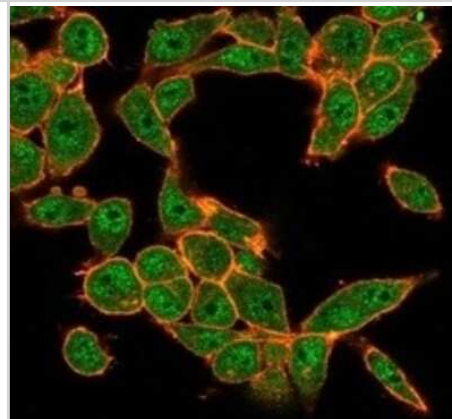
| Product Description | |
|---------------------|-----------------------------------------------------------------------------------------------------------------------------------------------------------------------------------------------------------------------------------------------------------------------------------------------|
| Description | 200ug/ml of antibody purified from Bioreactor Concentrate by Protein A or G. Prepared in 10 mM PBS with 0.05% BSA & 0.05% azide. Also available WITHOUT BSA & azide at 1.0 mg/ml. (NBP3-14120) Antibody with azide - store at 2 to 8C. Antibody without azide - store at -20 to -80 C. |
| Host | Mouse |
| Gene ID | 4209 |
| Gene Symbol | MEF2D |
| Species | Human |
| Reactivity Notes | Predicted to react in Mouse and Rat. |
| Immunogen | Recombinant full-length human MEF2D protein (Uniprot: Q14814) |

| Product Application Details | |
|-----------------------------|--------------------------------------------------------------------------------------------------------------------------------------------------------------------------------------------------------------------------------------------------------------------------------------------------------------------------------|
| Applications | Flow Cytometry, Immunocytochemistry/ Immunofluorescence, Immunohistochemistry-Paraffin, Immunoprecipitation, Protein Array |
| Recommended Dilutions | Flow Cytometry 1-2 ug/million cells, Immunocytochemistry/ Immunofluorescence 1-2 ug/ml, Immunoprecipitation 1-2 ug/100-500 ug protein, Immunohistochemistry-Paraffin 1-2 ug/ml, Protein Array |
| Application Notes | Immunohistochemistry (Formalin-fixed): 1-2ug/ml for 30 minutes at RT. Staining of formalin-fixed tissues requires heating tissue sections in 10mM Tris with 1mM EDTA, pH 9.0, for 45 min at 95C followed by cooling at RT for 20 minutes Immunoprecipitation: 1-2ug per 100-500ug of total protein (1ml of cell lysate) |

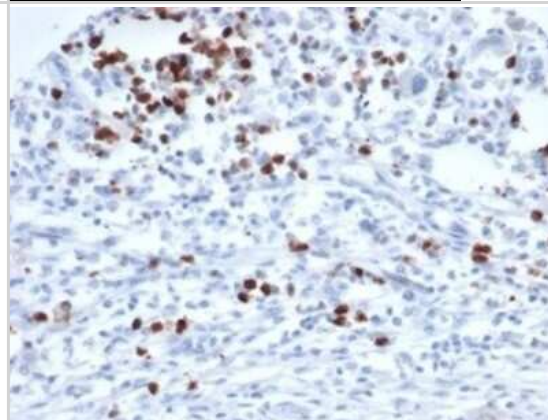


Images

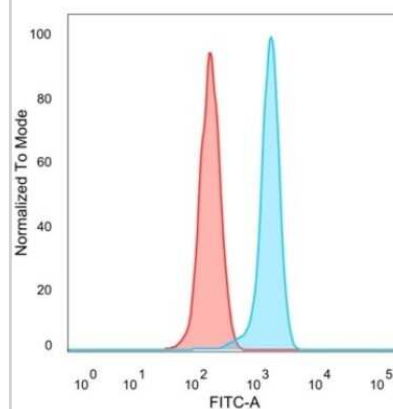
Immunocytochemistry/Immunofluorescence: MEF2D Antibody (PCRP-MEF2D-3A4) [NBP3-13967] - Immunofluorescence Analysis of PFA-fixed HeLa cells stained using MEF2D Antibody (PCRP-MEF2D-3A4) followed by goat anti-mouse IgG-CF488 (green). CF640A phalloidin (red).



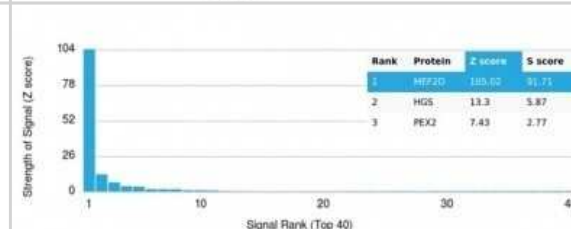
Immunohistochemistry-Paraffin: MEF2D Antibody (PCRP-MEF2D-3A4) [NBP3-13967] - Formalin-fixed, paraffin-embedded human rhabdomyosarcoma stained with MEF2D antibody (PCRP-MEF2D-3A4). HIER: Tris/EDTA, pH9.0, 45min. HRP-polymer, 30min. DAB, 5min.



Flow Cytometry: MEF2D Antibody (PCRP-MEF2D-3A4) [NBP3-13967] - Flow cytometric analysis of PFA-fixed HeLa cells. MEF2D antibody (PCRP-MEF2D-3A4) followed by goat anti-mouse IgG-CF488 (blue); isotype control (red).



Protein Array: MEF2D Antibody (PCRP-MEF2D-3A4) [NBP3-13967] - Analysis of Protein Array containing more than 19,000 full-length human proteins using MEF2D Antibody (PCRP-MEF2D-3A4).



**Novus Biologicals USA**

10730 E. Briarwood Avenue
Centennial, CO 80112
USA
Phone: 303.730.1950
Toll Free: 1.888.506.6887
Fax: 303.730.1966
nb-customerservice@bio-techne.com

Bio-Techne Canada

21 Canmotor Ave
Toronto, ON M8Z 4E6
Canada
Phone: 905.827.6400
Toll Free: 855.668.8722
Fax: 905.827.6402
canada.inquires@bio-techne.com

Bio-Techne Ltd

19 Barton Lane
Abingdon Science Park
Abingdon, OX14 3NB, United Kingdom
Phone: (44) (0) 1235 529449
Free Phone: 0800 37 34 15
Fax: (44) (0) 1235 533420
info.EMEA@bio-techne.com

General Contact Information

www.novusbio.com
Technical Support: nb-technical@bio-techne.com
Orders: nb-customerservice@bio-techne.com
General: novus@novusbio.com

Products Related to NBP3-13967-100ug

| | |
|--------------------|---------------------------------------------------------|
| HAF007 | Goat anti-Mouse IgG Secondary Antibody [HRP] |
| NB720-B | Rabbit anti-Mouse IgG (H+L) Secondary Antibody [Biotin] |
| NBP2-27231 | Mouse IgG2b Isotype Control (MPC-11) |
| H00004209-P01-10ug | Recombinant Human MEF2D GST (N-Term) Protein |

Limitations

This product is for research use only and is not approved for use in humans or in clinical diagnosis. Primary Antibodies are guaranteed for 1 year from date of receipt.

For more information on our 100% guarantee, please visit www.novusbio.com/guarantee

Earn gift cards/discounts by submitting a review: www.novusbio.com/reviews/submit/NBP3-13967

Earn gift cards/discounts by submitting a publication using this product:
www.novusbio.com/publications

