

Product Datasheet

KLF12 Antibody (PCRP-KLF12-1E3) NBP3-13848-100ug

Unit Size: 100 ug

Store at 4C.

www.novusbio.com



technical@novusbio.com

Protocols, Publications, Related Products, Reviews, Research Tools and Images at:
www.novusbio.com/NBP3-13848

Updated 7/16/2024 v.20.1

Earn rewards for product
reviews and publications.

Submit a publication at www.novusbio.com/publications

Submit a review at www.novusbio.com/reviews/destination/NBP3-13848



NBP3-13848-100ug

KLF12 Antibody (PCRP-KLF12-1E3)

Product Information	
Unit Size	100 ug
Concentration	0.2 mg/ml
Storage	Store at 4C.
Clonality	Monoclonal
Clone	PCRP-KLF12-1E3
Preservative	0.05% Sodium Azide
Isotype	IgG1
Purity	Protein A or G purified
Buffer	10 mM PBS with 0.05% BSA
Target Molecular Weight	44.24 kDa

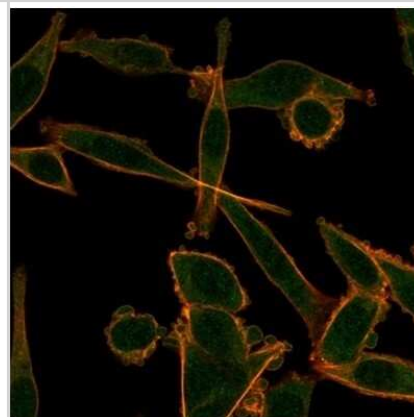
Product Description	
Description	200ug/ml of antibody purified from Bioreactor Concentrate by Protein A or G. Prepared in 10 mM PBS with 0.05% BSA & 0.05% azide. Also available WITHOUT BSA & azide at 1.0 mg/ml. (NBP3-14277) Antibody with azide - store at 2 to 8C. Antibody without azide - store at -20 to -80 C.
Host	Mouse
Gene ID	11278
Gene Symbol	KLF12
Species	Human
Reactivity Notes	Predicted to react with Mouse and Rat.
Immunogen	Recombinant full-length human KLF12 protein (Uniprot: Q9Y4X4)

Product Application Details	
Applications	Flow Cytometry, Immunocytochemistry/ Immunofluorescence, Immunoprecipitation, Protein Array
Recommended Dilutions	Flow Cytometry 1-2 ug/million cells, Immunocytochemistry/ Immunofluorescence 1-2 ug/ml, Immunoprecipitation 1-2 ug/100-500 ug protein, Protein Array

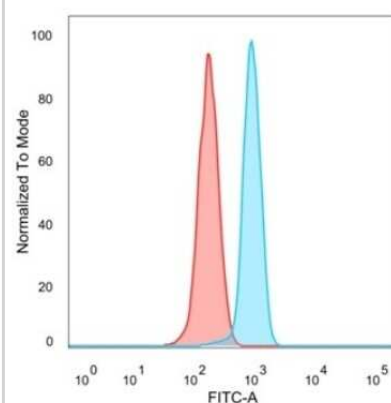


Images

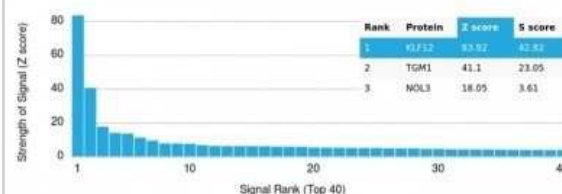
Immunocytochemistry/Immunofluorescence: KLF12 Antibody (PCRP-KLF12-1E3) [NBP3-13848] - Immunofluorescence analysis of PFA-fixed HeLa cells. KLF12 Antibody (PCRP-KLF12-1E3) followed by goat anti-mouse IgG-CF488 (green).



Flow Cytometry: KLF12 Antibody (PCRP-KLF12-1E3) [NBP3-13848] - Flow cytometric analysis of PFA-fixed HeLa cells. KLF12 antibody (PCRP-KLF12-1E3) followed by goat anti-mouse IgG-CF488 (blue), unstained cells (red).



Protein Array: KLF12 Antibody (PCRP-KLF12-1E3) [NBP3-13848] - Analysis of Protein Array containing more than 19,000 full-length human proteins using KLF12 Antibody (PCRP-KLF12-1E3).





Novus Biologicals USA

10730 E. Briarwood Avenue
Centennial, CO 80112
USA
Phone: 303.730.1950
Toll Free: 1.888.506.6887
Fax: 303.730.1966
nb-customerservice@bio-techne.com

Bio-Techne Canada

21 Canmotor Ave
Toronto, ON M8Z 4E6
Canada
Phone: 905.827.6400
Toll Free: 855.668.8722
Fax: 905.827.6402
canada.inquires@bio-techne.com

Bio-Techne Ltd

19 Barton Lane
Abingdon Science Park
Abingdon, OX14 3NB, United Kingdom
Phone: (44) (0) 1235 529449
Free Phone: 0800 37 34 15
Fax: (44) (0) 1235 533420
info.EMEA@bio-techne.com

General Contact Information

www.novusbio.com
Technical Support: nb-technical@bio-techne.com
Orders: nb-customerservice@bio-techne.com
General: novus@novusbio.com

Products Related to NBP3-13848-100ug

HAF007	Goat anti-Mouse IgG Secondary Antibody [HRP]
NB720-B	Rabbit anti-Mouse IgG (H+L) Secondary Antibody [Biotin]
NBP1-97005-0.5mg	Mouse IgG1 Isotype Control (MG1)
NBP2-51837-0.1mg	Recombinant Human KLF12 His Protein

Limitations

This product is for research use only and is not approved for use in humans or in clinical diagnosis. Primary Antibodies are guaranteed for 1 year from date of receipt.

For more information on our 100% guarantee, please visit www.novusbio.com/guarantee

Earn gift cards/discounts by submitting a review: www.novusbio.com/reviews/submit/NBP3-13848

Earn gift cards/discounts by submitting a publication using this product:
www.novusbio.com/publications

