

Product Datasheet

Influenza B nucleoprotein Antibody (HL1069) - (B/Taiwan/753/2005) - Azide and BSA Free NBP3-13709

Unit Size: 100 ul

Store at 4C short term. Aliquot and store at -20C long term. Avoid freeze-thaw cycles.

www.novusbio.com



technical@novusbio.com

Protocols, Publications, Related Products, Reviews, Research Tools and Images at:
www.novusbio.com/NBP3-13709

Updated 7/31/2025 v.20.1

Earn rewards for product
reviews and publications.

Submit a publication at www.novusbio.com/publications

Submit a review at www.novusbio.com/reviews/destination/NBP3-13709



NBP3-13709

Influenza B nucleoprotein Antibody (HL1069) - (B/Taiwan/753/2005) - Azide and BSA Free

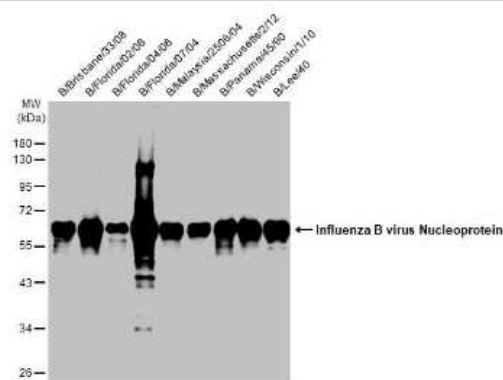
Product Information	
Unit Size	100 ul
Concentration	Concentrations vary lot to lot. See vial label for concentration. If unlisted please contact technical services.
Storage	Store at 4C short term. Aliquot and store at -20C long term. Avoid freeze-thaw cycles.
Clonality	Monoclonal
Clone	HL1069
Preservative	No Preservative
Isotype	IgG
Purity	Protein A purified
Buffer	PBS

Product Description	
Description	Centrifuge briefly prior to opening.
Host	Rabbit
Species	Virus
Reactivity Notes	Influenza B virus
Specificity/Sensitivity	Influenza B Nucleoprotein (B/Taiwan/753/2005)
Immunogen	Recombinant protein encompassing a sequence within the N-terminus region of Influenza B nucleoprotein (B/Taiwan/753/2005). The exact sequence is proprietary.

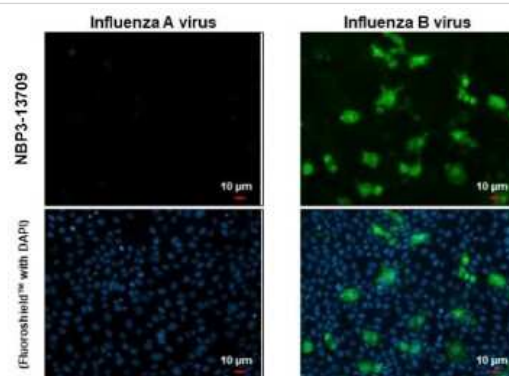
Product Application Details	
Applications	Western Blot, ELISA, Immunocytochemistry/ Immunofluorescence, Sandwich ELISA, Lateral Flow Assay
Recommended Dilutions	Western Blot Assay dependent, ELISA Assay dependent, Immunocytochemistry/ Immunofluorescence Assay dependent, Sandwich ELISA Assay dependent, Lateral Flow Assay Assay dependent

Images

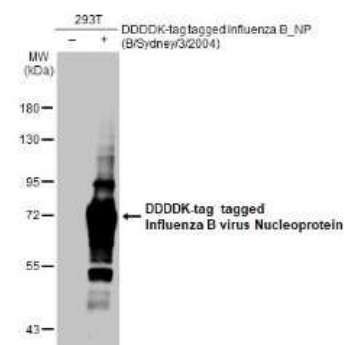
Western Blot: Influenza B nucleoprotein Antibody (HL1069) [NBP3-13709] - Influenza B viral lysates (1 ug) were separated by 10% SDS-PAGE, and the membrane was blotted with Influenza B Nucleoprotein antibody [HL1069] (NBP3-13709) diluted at 1:1000. The HRP-conjugated anti-rabbit IgG antibody (NBP2-19301) was used to detect the primary antibody.



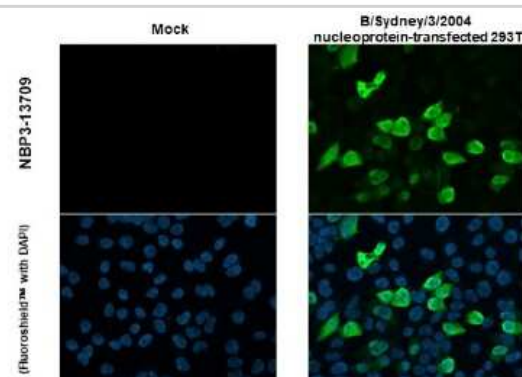
Immunocytochemistry/Immunofluorescence: Influenza B nucleoprotein Antibody (HL1069) [NBP3-13709] - Immunofluorescent analysis of influenza virus infected cells using Influenza B Nucleoprotein antibody (NBP3-13709). Sample: Influenza A and B infected cells slide. Green: Influenza B Nucleoprotein antibody (NBP3-13709) diluted at 1:100.



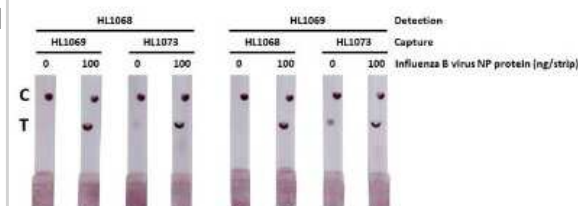
Western Blot: Influenza B nucleoprotein Antibody (HL1069) [NBP3-13709] - Non-transfected (-) and transfected (+) 293T whole cell extracts (30 ug) were separated by 7.5% SDS-PAGE, and the membrane was blotted with Influenza B Nucleoprotein antibody [HL1069] (NBP3-13709) diluted at 1:20000. The HRP-conjugated anti-rabbit IgG antibody (NBP2-19301) was used to detect the primary antibody.



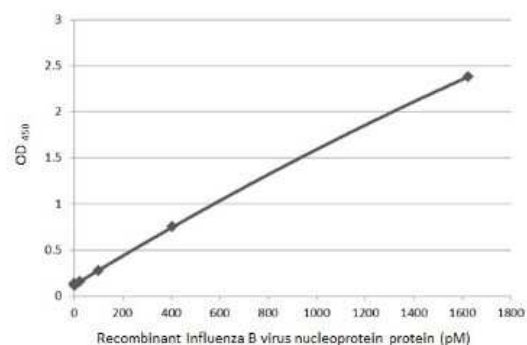
Immunocytochemistry/Immunofluorescence: Influenza B nucleoprotein Antibody (HL1069) [NBP3-13709] - Influenza B Nucleoprotein antibody (NBP3-13709) detects overexpressed Influenza virus Nucleoprotein protein by immunofluorescent analysis. Sample: Mock and transfected 293T cells were fixed in 4% paraformaldehyde at RT for 15 min. Green: Influenza B Nucleoprotein stained by Influenza B Nucleoprotein antibody (NBP3-13709) diluted at 1:2000.



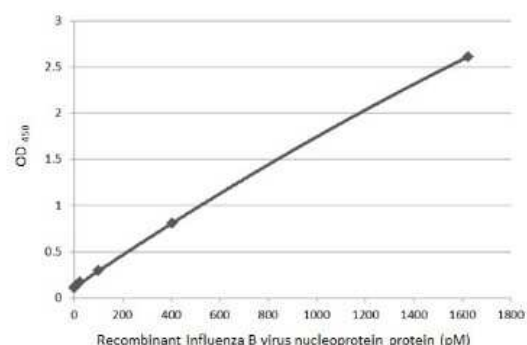
Lateral Flow Assay: Influenza B nucleoprotein Antibody (HL1069) [NBP3-13709] - Detection of recombinant influenza B nucleoprotein (B/Sydney/3/2004), DDDDK Tag by lateral flow assay using the indicated recombinant rabbit monoclonal antibody pairs. HL1068 : Influenza B Nucleoprotein antibody [HL1068] (NBP3-13708) HL1069 : Influenza B Virus Nucleoprotein antibody [HL1069] (NBP3-13709) HL1073 : Influenza B Nucleoprotein antibody [HL1073] (NBP3-13713) Sample : Influenza B Virus Nucleoprotein (B/Sydney/3/2004), DDDDK Tag



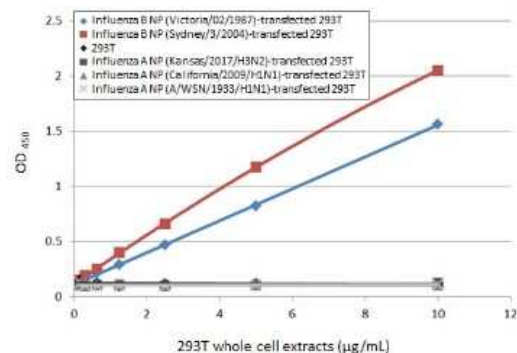
Sandwich ELISA: Influenza B nucleoprotein Antibody (HL1069) [NBP3-13709] - Sandwich ELISA detection of recombinant Influenza B Nucleoprotein (B/Sydney/3/2004), DDDDK Tag using antibodies as below. Capture: Influenza B Virus Nucleoprotein antibody [HL1069] (NBP3-13709) (5 ug/mL) Detection: HRP-conjugated Influenza B Nucleoprotein antibody [HL1073] (NBP3-13713) (1 ug/mL) Please notice that NBP3-13713 needs to be conjugated to HRP to function as the detection antibody when paired with NBP3-13709. Please contact us for custom HRP-conjugated antibody.



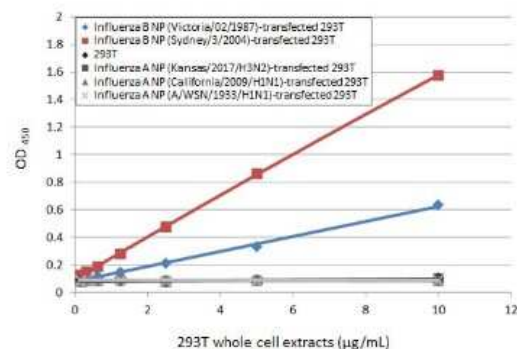
Sandwich ELISA: Influenza B nucleoprotein Antibody (HL1069) [NBP3-13709] - Sandwich ELISA detection of recombinant Influenza B Nucleoprotein (B/Sydney/3/2004), DDDDK Tag using antibodies as below. Capture: Influenza B Nucleoprotein antibody [HL1069] (NBP3-13709) (5 ug/mL) Detection: HRP-conjugated Influenza B Nucleoprotein antibody [HL1068] (NBP3-13708) (1 ug/mL) Please notice that NBP3-13708 needs to be conjugated to HRP to function as the detection antibody when paired with NBP3-13709. Please contact us for custom HRP-conjugated antibody.



Sandwich ELISA: Influenza B nucleoprotein Antibody (HL1069) [NBP3-13709] - Sandwich ELISA detection of non-transfected and transfected 293T whole cell extracts using antibodies as below. Capture: Influenza B Nucleoprotein antibody [HL1069] (NBP3-13709) (5 ug/mL) Detection: HRP-conjugated Influenza B Nucleoprotein antibody [HL1073] (NBP3-13713) (1 ug/mL) Please notice that NBP3-13713 needs to be conjugated to HRP to function as the detection antibody when paired with NBP3-13709. Please contact us for custom HRP-conjugated antibody.



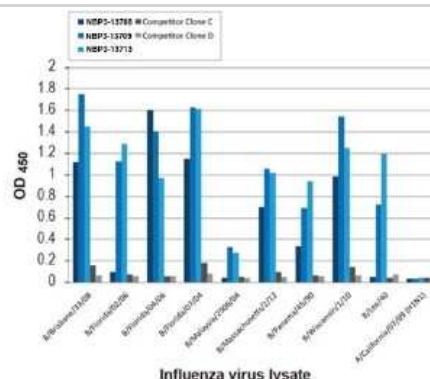
Sandwich ELISA: Influenza B nucleoprotein Antibody (HL1069) [NBP3-13709] - Sandwich ELISA detection of non-transfected and transfected 293T whole cell extracts using antibodies as below. Capture: Influenza B Nucleoprotein antibody [HL1069] (NBP3-13709) (5 ug/mL) Detection: HRP-conjugated Influenza B Nucleoprotein antibody [HL1068] (NBP3-13708) (1 ug/mL) Please notice that NBP3-13708 needs to be conjugated to HRP to function as the detection antibody when paired with NBP3-13709. Please contact us for custom HRP-conjugated antibody.



ELISA: Influenza B nucleoprotein Antibody (HL1069) [NBP3-13709] - Indirect ELISA analysis performed by coating plate with viral lysate derived from different strains of Influenza A (i.e., A/California/07/09 (H1N1)) and Influenza B (i.e., B/Brisbane/33/08; B/Florida/02/06; B/Florida/04/06; B/Florida/07/04; B/Malaysia/2506/04; B/Massachusetts/2/12; B/Panama/45/90; B/Wisconsin/1/10; B/Lee/40) (1 -0.2 ug). Coated protein was probed with Influenza B Nucleoprotein antibody [HL1069] (NBP3-13709) (1 ug/mL). Rabbit IgG antibody (HRP) (NBP2-19301) (1:10000) was used to detect bound primary antibody.



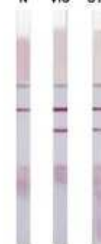
ELISA: Influenza B nucleoprotein Antibody (HL1069) [NBP3-13709] - Indirect ELISA analysis was performed by coating a plate with viral lysates (1 ug) derived from different strains of influenza B or influenza A and probing with the specified influenza B nucleoprotein antibodies (1 ug/ml). Goat anti-rabbit IgG antibody (HRP) (NBP2-19301) (1:10000) or goat anti-mouse IgG antibody (HRP) (NBP2-19382) (1:10000) were used to detect the bound primary antibodies.



Lateral Flow Assay: Influenza B nucleoprotein Antibody (HL1069) [NBP3-13709] - Detection of recombinant influenza B nucleoproteins of the indicated strains by lateral flow assay using the recombinant rabbit monoclonal antibody pair. Capture: Influenza B Nucleoprotein antibody [HL1069] (NBP3-13709) Detection: Influenza B Nucleoprotein antibody [HL1068] (NBP3-13708)

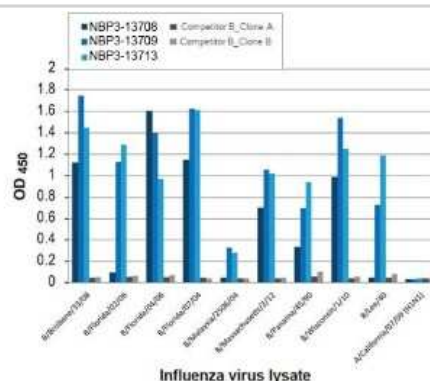
Influenza B

N VIC SYD

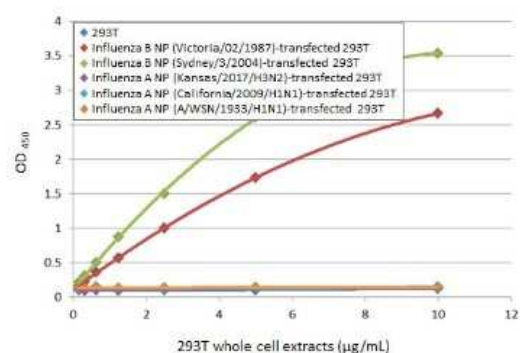


Abbreviation	Product
VIC	Influenza B virus Nucleoprotein (B/Victoria/521/07)
SYD	Influenza B virus Nucleoprotein (B/Sydney/07/04)

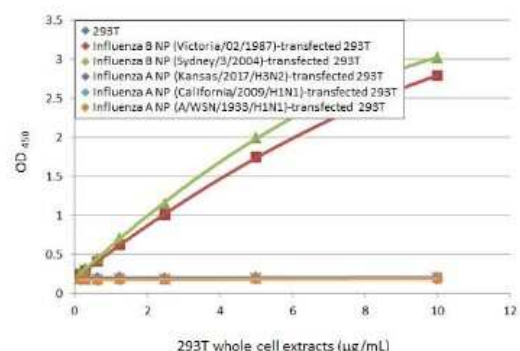
ELISA: Influenza B nucleoprotein Antibody (HL1069) [NBP3-13709] - Indirect ELISA analysis was performed by coating a plate with viral lysates (1 ug) derived from different strains of influenza B or influenza A and probing with the specified influenza B nucleoprotein antibodies (1 ug/ml). Goat anti-rabbit IgG antibody (HRP) (NBP2-19301) (1:10000) or goat anti-mouse IgG antibody (HRP) (NBP2-19382) (1:10000) were used to detect the bound primary antibodies.



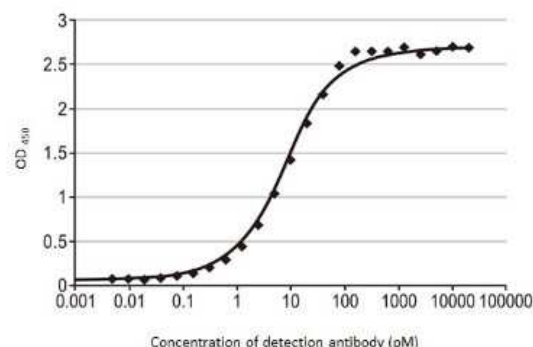
Sandwich ELISA: Influenza B nucleoprotein Antibody (HL1069) [NBP3-13709] - Sandwich ELISA detection of non-transfected and transfected 293T whole cell extracts using Influenza B Nucleoprotein antibody [HL1068] (NBP3-13708) as capture antibody at concentration of 5 ug/mL and HRP-conjugated Influenza B Nucleoprotein antibody [HL1069] (NBP3-13709) as detection antibody at concentration of 1 ug/mL. Please notice that NBP3-13709 needs to be conjugated to HRP to function as the detection antibody when paired with NBP3-13708. Please contact us for custom HRP-conjugated antibody.



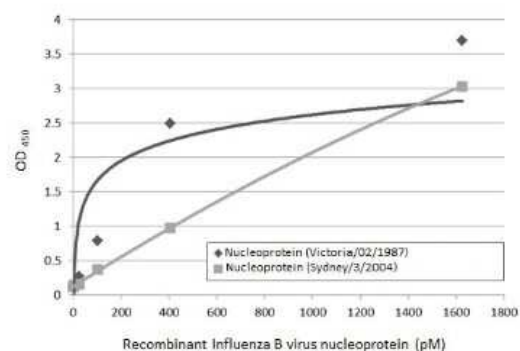
Sandwich ELISA: Influenza B nucleoprotein Antibody (HL1069) [NBP3-13709] - Sandwich ELISA detection of non-transfected and transfected 293T whole cell extracts using Influenza B Nucleoprotein antibody [HL1073] (NBP3-13713) as capture antibody at concentration of 5 ug/mL and HRP-conjugated Influenza B Nucleoprotein antibody [HL1069] (NBP3-13709) as detection antibody at concentration of 1 ug/mL. Please notice that NBP3-13709 needs to be conjugated to HRP to function as the detection antibody when paired with NBP3-13713. Please contact us for custom HRP-conjugated antibody.



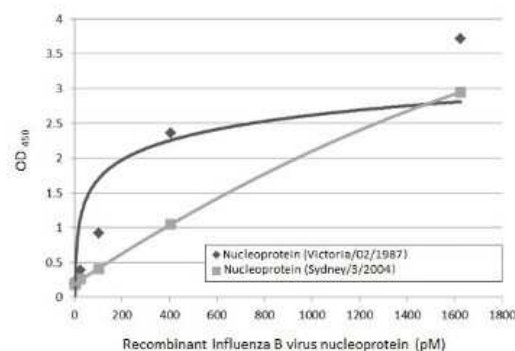
ELISA: Influenza B nucleoprotein Antibody (HL1069) [NBP3-13709] - Indirect ELISA analysis performed by coating plate with recombinant full-length Influenza B (nucleoprotein) protein, DDDDK tag (50 ng). Coated protein was probed with Influenza B Nucleoprotein antibody [HL1069] (NBP3-13709) (20000-4.77*10⁻³ pM). Rabbit IgG antibody (HRP) (NBP2-19301) (1:10000) was used to detect bound primary antibody. EC50 : 8.72 pM



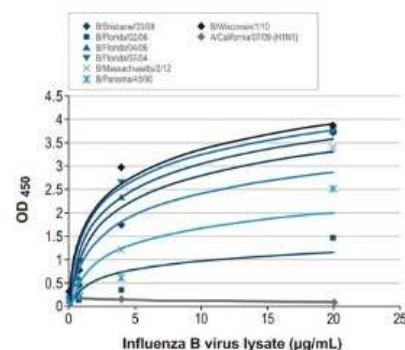
Sandwich ELISA: Influenza B nucleoprotein Antibody (HL1069) [NBP3-13709] - Sandwich ELISA detection of recombinant nucleoproteins derived from different strains of Influenza B (i.e., B/Sydney/3/2004; B/Victoria/02/1987) using antibodies as below. Capture : Influenza B Nucleoprotein antibody [HL1068] (NBP3-13708) (5 ug/mL) Detection: HRP-conjugated Influenza B Virus Nucleoprotein antibody [HL1069] (NBP3-13709) (1 ug/mL). Please notice that NBP3-13709 needs to be conjugated to HRP to function as the detection antibody when paired with NBP3-13708. Please contact us for custom HRP-conjugated antibody.



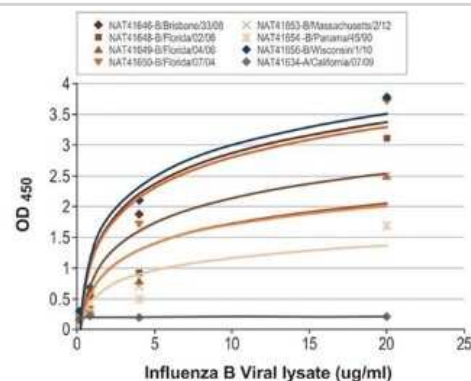
Sandwich ELISA: Influenza B nucleoprotein Antibody (HL1069) [NBP3-13709] - Sandwich ELISA detection of recombinant nucleoproteins derived from different strains of Influenza B (i.e., B/Sydney/3/2004; B/Victoria/02/1987) using antibodies as below. Capture: Influenza B Nucleoprotein antibody [HL1073] (NBP3-13713) (5 ug/mL) Detection: HRP-conjugated Influenza B Virus Nucleoprotein antibody [HL1069] (NBP3-13709) (1 ug/mL). Please notice that NBP3-13709 needs to be conjugated to HRP to function as the detection antibody when paired with NBP3-13713. Please contact us for custom HRP-conjugated antibody.



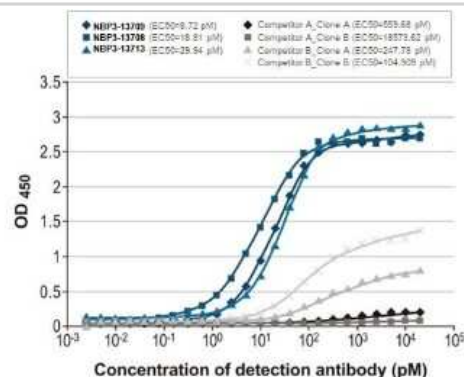
Sandwich ELISA: Influenza B nucleoprotein Antibody (HL1069) [NBP3-13709] - Sandwich ELISA detection of viral lysate derived from different strains of Influenza A (i.e., A/California/07/09 (H1N1)) and Influenza B (i.e., B/Brisbane/33/08; B/Florida/02/06; B/Florida/04/06; B/Florida/07/04; B/Massachusetts/2/12; B/Panama/45/90; B/Wisconsin/1/10) using antibodies as below. Capture: Influenza B Virus Nucleoprotein antibody [HL1068] (NBP3-13708) (5 ug/mL) Detection: HRP-conjugated Influenza B Nucleoprotein antibody [HL1069] (NBP3-13709) (1 ug/mL). Please notice that NBP3-13709 needs to be conjugated to HRP to function as the detection antibody when paired with NBP3-13708. Please contact us for custom HRP-conjugated antibody.



Sandwich ELISA: Influenza B nucleoprotein Antibody (HL1069) [NBP3-13709] - Sandwich ELISA detection of viral lysate derived from different strains of Influenza A (i.e., A/California/07/09 (H1N1)) and Influenza B virus (i.e., B/Brisbane/33/08; B/Florida/02/06; B/Florida/04/06; B/Florida/07/04; B/Massachusetts/2/12; B/Panama/45/90; B/Wisconsin/1/10) using antibodies as below. Capture: Influenza B Nucleoprotein antibody [HL1073] (NBP3-13713) (5 ug/mL) Detection: HRP-conjugated Influenza B Nucleoprotein antibody [HL1069] (NBP3-13709) (1 ug/mL). Please notice that NBP3-13709 needs to be conjugated to HRP to function as the detection antibody when paired with NBP3-13713. Please contact us for custom HRP-conjugated antibody.



ELISA: Influenza B nucleoprotein Antibody (HL1069) [NBP3-13709] - Indirect ELISA analysis was performed by coating a plate with recombinant influenza B nucleoprotein (B/Sydney/3/2004), DDDDK Tag (50 ng), and probing with the specified influenza B nucleoprotein antibodies at the indicated concentrations. Goat anti-rabbit IgG antibody (HRP) (NBP2-19301) (1:10000) or goat anti-mouse IgG antibody (HRP) (NBP2-19382) (1:10000) were used to detect the bound primary antibodies.





Novus Biologicals USA

10730 E. Briarwood Avenue
Centennial, CO 80112
USA
Phone: 303.730.1950
Toll Free: 1.888.506.6887
Fax: 303.730.1966
nb-customerservice@bio-techne.com

Bio-Techne Canada

21 Canmotor Ave
Toronto, ON M8Z 4E6
Canada
Phone: 905.827.6400
Toll Free: 855.668.8722
Fax: 905.827.6402
canada.inquires@bio-techne.com

Bio-Techne Ltd

19 Barton Lane
Abingdon Science Park
Abingdon, OX14 3NB, United Kingdom
Phone: (44) (0) 1235 529449
Free Phone: 0800 37 34 15
Fax: (44) (0) 1235 533420
info.EMEA@bio-techne.com

General Contact Information

www.novusbio.com
Technical Support: nb-technical@bio-
techne.com
Orders: nb-customerservice@bio-techne.com
General: novus@novusbio.com

Products Related to NBP3-13709

HAF008	Goat anti-Rabbit IgG Secondary Antibody [HRP]
NB7160	Goat anti-Rabbit IgG (H+L) Secondary Antibody [HRP]
NBP2-24891	Rabbit IgG Isotype Control

Limitations

This product is for research use only and is not approved for use in humans or in clinical diagnosis. Primary Antibodies are guaranteed for 1 year from date of receipt.

For more information on our 100% guarantee, please visit www.novusbio.com/guarantee

Earn gift cards/discounts by submitting a review: www.novusbio.com/reviews/submit/NBP3-13709

Earn gift cards/discounts by submitting a publication using this product:
www.novusbio.com/publications

