

Product Datasheet

Influenza B nucleoprotein Antibody (HL1068) - (B/Taiwan/753/2005) - Azide and BSA Free NBP3-13708

Unit Size: 100 ul

Store at 4C short term. Aliquot and store at -20C long term. Avoid freeze-thaw cycles.

www.novusbio.com



technical@novusbio.com

Protocols, Publications, Related Products, Reviews, Research Tools and Images at:
www.novusbio.com/NBP3-13708

Updated 7/31/2025 v.20.1

Earn rewards for product
reviews and publications.

Submit a publication at www.novusbio.com/publications

Submit a review at www.novusbio.com/reviews/destination/NBP3-13708



NBP3-13708

Influenza B nucleoprotein Antibody (HL1068) - (B/Taiwan/753/2005) - Azide and BSA Free

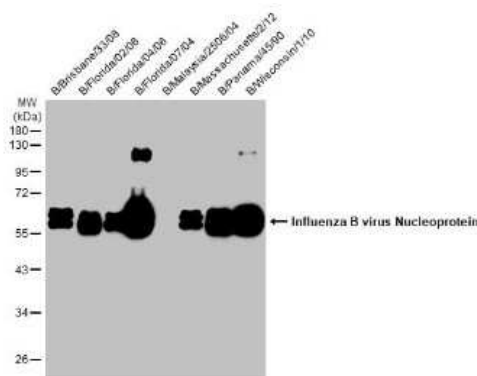
| Product Information | |
|---------------------|--|
| Unit Size | 100 ul |
| Concentration | Concentrations vary lot to lot. See vial label for concentration. If unlisted please contact technical services. |
| Storage | Store at 4C short term. Aliquot and store at -20C long term. Avoid freeze-thaw cycles. |
| Clonality | Monoclonal |
| Clone | HL1068 |
| Preservative | No Preservative |
| Isotype | IgG |
| Purity | Protein A purified |
| Buffer | PBS |

| Product Description | |
|-------------------------|---|
| Description | Centrifuge briefly prior to opening. |
| Host | Rabbit |
| Species | Virus |
| Reactivity Notes | Influenza B virus |
| Specificity/Sensitivity | Influenza B Nucleoprotein (B/Taiwan/753/2005) |
| Immunogen | Recombinant protein encompassing a sequence within the N-terminus region of Influenza B nucleoprotein (B/Taiwan/753/2005). The exact sequence is proprietary. |

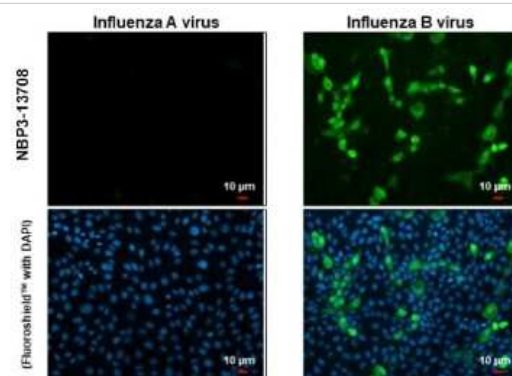
| Product Application Details | |
|-----------------------------|--|
| Applications | Western Blot, ELISA, Immunocytochemistry/ Immunofluorescence, Sandwich ELISA, Lateral Flow Assay |
| Recommended Dilutions | Western Blot, ELISA, Immunocytochemistry/ Immunofluorescence, Sandwich ELISA, Lateral Flow Assay |

Images

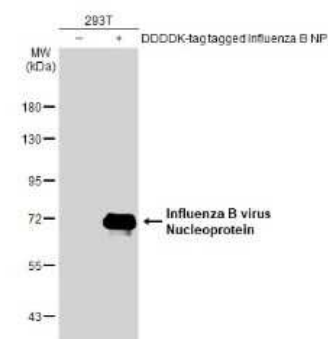
Western Blot: Influenza B Virus Nucleoprotein Antibody (HL1068) [NBP3-13708] - Influenza B viral lysates (1 ug) were separated by 10% SDS-PAGE, and the membrane was blotted with Influenza B Virus Nucleoprotein antibody [HL1068] (NBP3-13708) diluted at 1:1000. The HRP-conjugated anti-rabbit IgG antibody (NBP2-19301) was used to detect the primary antibody.



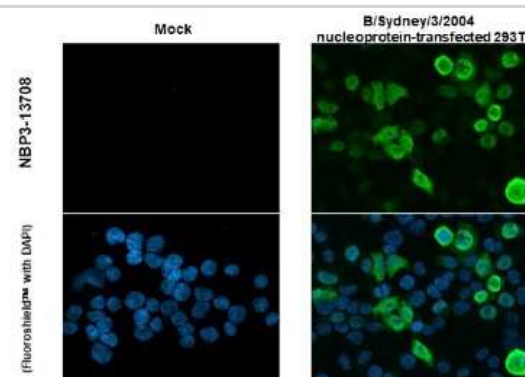
Immunocytochemistry/Immunofluorescence: Influenza B Virus Nucleoprotein Antibody (HL1068) [NBP3-13708] - Immunofluorescent analysis of influenza virus infected cells using Influenza B Virus Nucleoprotein antibody (NBP3-13708). Sample: Influenza A and B Virus infected cells slide. Green: Influenza B Virus Nucleoprotein antibody (NBP3-13708) diluted at 1:100.



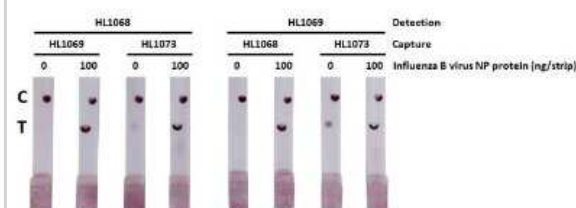
Western Blot: Influenza B Virus Nucleoprotein Antibody (HL1068) [NBP3-13708] - Non-transfected (-) and transfected (+) 293T whole cell extracts (30 ug) were separated by 7.5% SDS-PAGE, and the membrane was blotted with Influenza B Virus Nucleoprotein antibody [HL1068] (NBP3-13708) diluted at 1:5000. The HRP-conjugated anti-rabbit IgG antibody (NBP2-19301) was used to detect the primary antibody.



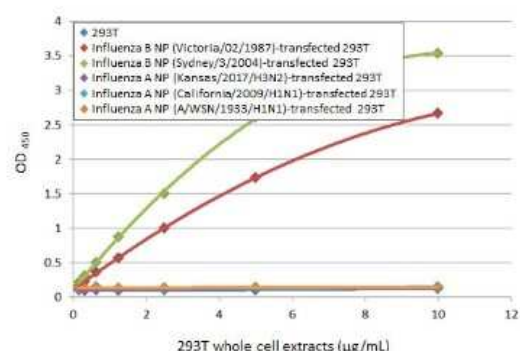
Immunocytochemistry/Immunofluorescence: Influenza B Virus Nucleoprotein Antibody (HL1068) [NBP3-13708] - Influenza B Virus Nucleoprotein antibody (NBP3-13708) detects overexpressed Influenza virus Nucleoprotein protein by immunofluorescent analysis. Sample: Mock and transfected 293T cells were fixed in 4% paraformaldehyde at RT for 15 min. Green: Influenza B Virus Nucleoprotein stained by Influenza B Virus Nucleoprotein antibody (NBP3-13708) diluted at 1:2000.



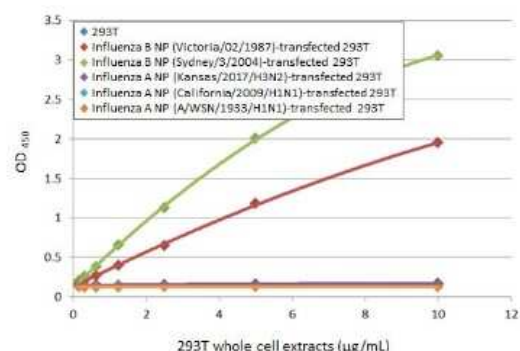
Lateral Flow Assay: Influenza B Virus Nucleoprotein Antibody (HL1068) [NBP3-13708] - Detection of recombinant influenza B virus nucleoprotein (NP) (B/Sydney/3/2004), DDDDK Tag by lateral flow assay using the indicated recombinant rabbit monoclonal antibody pairs. HL1068 : Influenza B Virus Nucleoprotein antibody [HL1068] (NBP3-13708) HL1069 : Influenza B Virus Nucleoprotein antibody [HL1069] (NBP3-13709) HL1073 : Influenza B Virus Nucleoprotein antibody [HL1073] (NBP3-13713) Sample : Influenza B Virus Nucleoprotein (NP) (B/Sydney/3/2004), DDDDK Tag



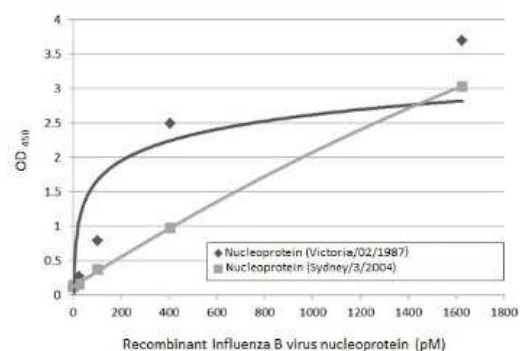
Sandwich ELISA: Influenza B Virus Nucleoprotein Antibody (HL1068) [NBP3-13708] - Sandwich ELISA detection of non-transfected and transfected 293T whole cell extracts using Influenza B Virus Nucleoprotein antibody [HL1068] (NBP3-13708) as capture antibody at concentration of 5 ug/mL and HRP-conjugated Influenza B Virus Nucleoprotein antibody [HL1069] (NBP3-13709) as detection antibody at concentration of 1 ug/mL. Please notice that NBP3-13709 needs to be conjugated to HRP to function as the detection antibody when paired with NBP3-13708. Please contact us for custom HRP-conjugated antibody.



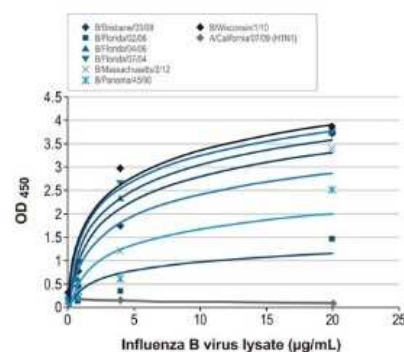
Sandwich ELISA: Influenza B Virus Nucleoprotein Antibody (HL1068) [NBP3-13708] - Sandwich ELISA detection of non-transfected and transfected 293T whole cell extracts using Influenza B Virus Nucleoprotein antibody [HL1068] (NBP3-13708) as capture antibody at concentration of 5 ug/mL and HRP-conjugated Influenza B Virus Nucleoprotein antibody [HL1073] (NBP3-13713) as detection antibody at concentration of 1 ug/mL. Please notice that NBP3-13713 needs to be conjugated to HRP to function as the detection antibody when paired with NBP3-13708. Please contact us for custom HRP-conjugated antibody.



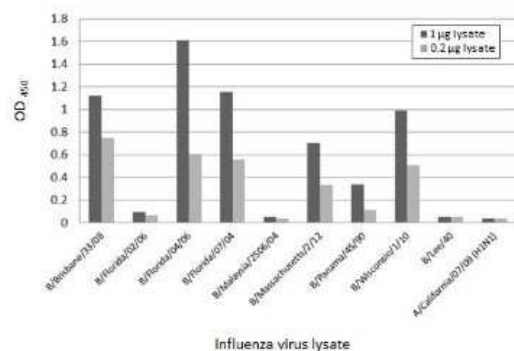
Sandwich ELISA: Influenza B Virus Nucleoprotein Antibody (HL1068) [NBP3-13708] - Sandwich ELISA detection of recombinant nucleoproteins (NP) derived from different strains of Influenza B virus (i.e., B/Sydney/3/2004; B/Victoria/02/1987) using antibodies as below. Capture : Influenza B Virus Nucleoprotein antibody [HL1068] (NBP3-13708) (5 ug/mL) Detection: HRP-conjugated Influenza B Virus Nucleoprotein antibody [HL1069] (NBP3-13709) (1 ug/mL). Please notice that NBP3-13709 needs to be conjugated to HRP to function as the detection antibody when paired with NBP3-13708. Please contact us for custom HRP-conjugated antibody.



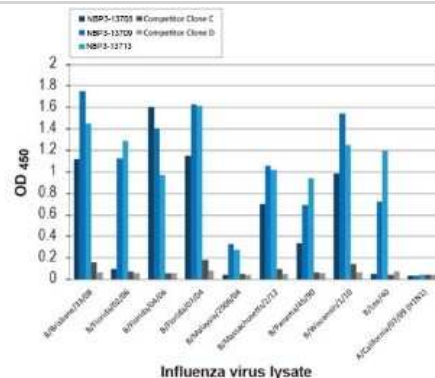
Sandwich ELISA: Influenza B Virus Nucleoprotein Antibody (HL1068) [NBP3-13708] - Sandwich ELISA detection of viral lysate derived from different strains of Influenza A virus (i.e., A/California/07/09 (H1N1)) and Influenza B virus (i.e., B/Brisbane/33/08; B/Florida/02/06; B/Florida/04/06; B/Florida/07/04; B/Massachusetts/2/12; B/Panama/45/90; B/Wisconsin/1/10) using antibodies as below. Capture: Influenza B Virus Nucleoprotein antibody [HL1068] (NBP3-13708) (5 ug/mL) Detection: HRP-conjugated Influenza B Virus Nucleoprotein antibody [HL1069] (NBP3-13709) (1 ug/mL) Please notice that NBP3-13709 needs to be conjugated to HRP to function as the detection antibody when paired with NBP3-13708. Please contact us for custom HRP-conjugated antibody.



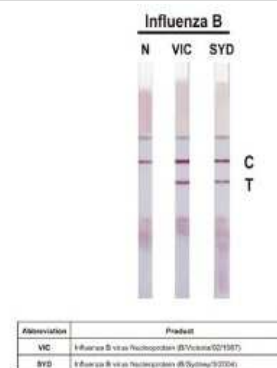
ELISA: Influenza B Virus Nucleoprotein Antibody (HL1068) [NBP3-13708] - Indirect ELISA analysis performed by coating plate with viral lysate derived from different strains of Influenza A virus (i.e., A/California/07/09 (H1N1)) and Influenza B virus (i.e., B/Brisbane/33/08; B/Florida/02/06; B/Florida/04/06; B/Florida/07/04; B/Malaysia/2506/04; B/Massachusetts/2/12; B/Panama/45/90; B/Wisconsin/1/10; B/Lee/40) (1 -0.2 ug). Coated protein was probed with Influenza B Virus Nucleoprotein antibody [HL1068] (NBP3-13708) (1 ug/mL). Rabbit IgG antibody (HRP) (NBP2-19301) (1:10000) was used to detect bound primary antibody.



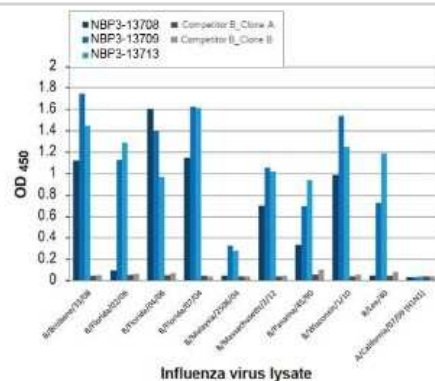
ELISA: Influenza B Virus Nucleoprotein Antibody (HL1068) [NBP3-13708] - Indirect ELISA analysis was performed by coating a plate with viral lysates (1 ug) derived from different strains of influenza B virus or influenza A virus and probing with the specified influenza B virus nucleoprotein antibodies (1 ug/ml). Goat anti-rabbit IgG antibody (HRP) (NBP2-19301) (1:10000) or goat anti-mouse IgG antibody (HRP) (NBP2-19382) (1:10000) were used to detect the bound primary antibodies.



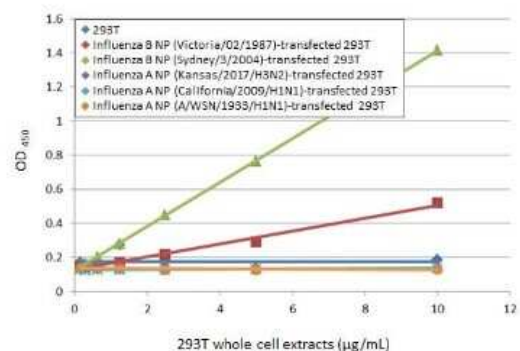
Lateral Flow Assay: Influenza B Virus Nucleoprotein Antibody (HL1068) [NBP3-13708] - Detection of recombinant influenza B virus nucleoproteins of the indicated strains by lateral flow assay using the recombinant rabbit monoclonal antibody pair. Capture: Influenza B Virus Nucleoprotein antibody [HL1069] (NBP3-13709) Detection: Influenza B Virus Nucleoprotein antibody [HL1068] (NBP3-13708)



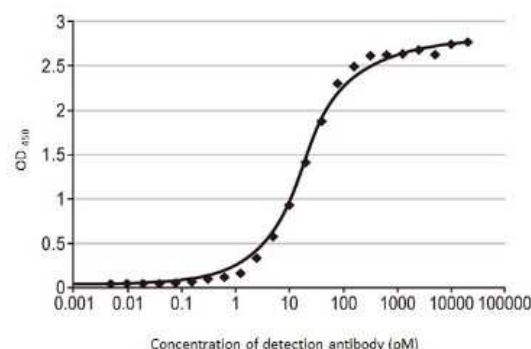
ELISA: Influenza B Virus Nucleoprotein Antibody (HL1068) [NBP3-13708] - Indirect ELISA analysis was performed by coating a plate with viral lysates (1 ug) derived from different strains of influenza B virus or influenza A virus and probing with the specified influenza B virus nucleoprotein antibodies (1 ug/ml). Goat anti-rabbit IgG antibody (HRP) (NBP2-19301) (1:10000) or goat anti-mouse IgG antibody (HRP) (NBP2-19382) (1:10000) were used to detect the bound primary antibodies.



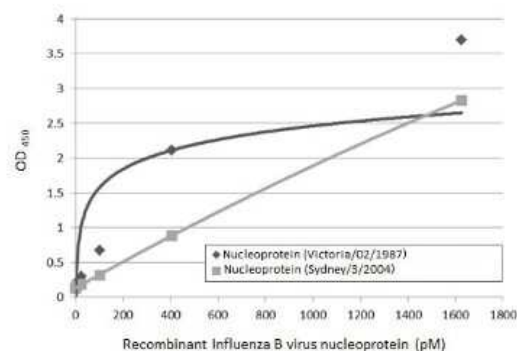
ELISA: Influenza B Virus Nucleoprotein Antibody (HL1068) [NBP3-13708] - Sandwich ELISA detection of non-transfected and transfected 293T whole cell extracts using Influenza B Virus Nucleoprotein antibody [HL1073] (NBP3-13713) as capture antibody at concentration of 5 ug/mL and HRP-conjugated Influenza B Virus Nucleoprotein antibody [HL1068] (NBP3-13708) as detection antibody at concentration of 1 ug/mL. Please notice that NBP3-13708 needs to be conjugated to HRP to function as the detection antibody when paired with NBP3-13713. Please contact us for custom HRP-conjugated antibody.



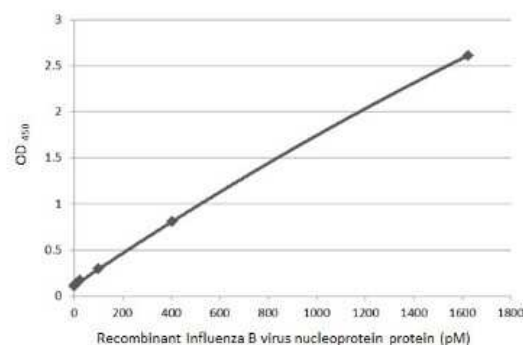
ELISA: Influenza B Virus Nucleoprotein Antibody (HL1068) [NBP3-13708] - Indirect ELISA analysis performed by coating plate with recombinant full-length Influenza B virus NP (nucleoprotein) protein, DDDDK tag (50 ng). Coated protein was probed with Influenza B Virus Nucleoprotein antibody [HL1068] (NBP3-13708) (20000-4.77*10⁻³ pM). Rabbit IgG antibody (HRP) (NBP2-19301) (1:10000) was used to detect bound primary antibody. EC50 : 18.81 pM



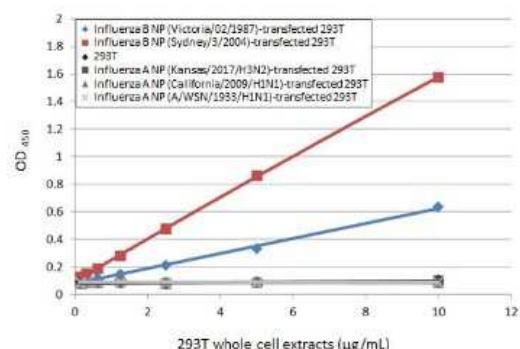
Sandwich ELISA: Influenza B Virus Nucleoprotein Antibody (HL1068) [NBP3-13708] - Sandwich ELISA detection of recombinant nucleoproteins (NP) derived from different strains of Influenza B virus (i.e., B/Sydney/3/2004; B/Victoria/02/1987) using antibodies as below. Capture: Influenza B Virus Nucleoprotein antibody [HL1073] (NBP3-13713) (5 ug/mL) Detection: HRP-conjugated Influenza B Virus Nucleoprotein antibody [HL1068] (NBP3-13708) (1 ug/mL). Please notice that NBP3-13708 needs to be conjugated to HRP to function as the detection antibody when paired with NBP3-13713. Please contact us for custom HRP-conjugated antibody.



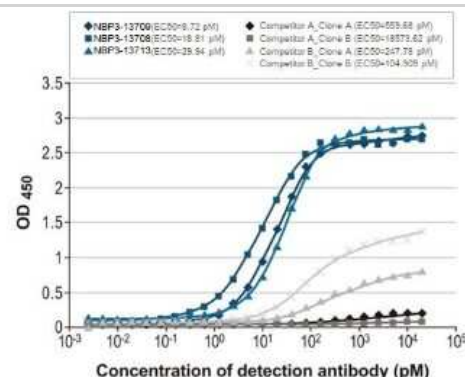
Sandwich ELISA: Influenza B Virus Nucleoprotein Antibody (HL1068) [NBP3-13708] - Sandwich ELISA detection of recombinant Influenza B Virus Nucleoprotein (B/Sydney/3/2004), DDDDK Tag using antibodies as below. Capture: Influenza B Virus Nucleoprotein antibody [HL1069] (NBP3-13709) (5 ug/mL) Detection: HRP-conjugated Influenza B Virus Nucleoprotein antibody [HL1068] (NBP3-13708) (1 ug/mL) Please notice that NBP3-13708 needs to be conjugated to HRP to function as the detection antibody when paired with NBP3-13709. Please contact us for custom HRP-conjugated antibody.



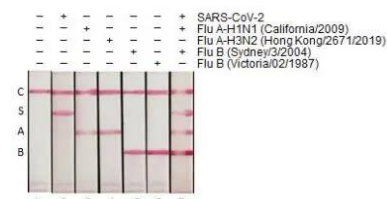
Sandwich ELISA: Influenza B Virus Nucleoprotein Antibody (HL1068) [NBP3-13708] - Sandwich ELISA detection of non-transfected and transfected 293T whole cell extracts using antibodies as below. **Capture:** Influenza B Virus Nucleoprotein antibody [HL1069] (NBP3-13709) (5 ug/mL) **Detection:** HRP-conjugated Influenza B Virus Nucleoprotein antibody [HL1068] (NBP3-13708) (1 ug/mL) Please notice that NBP3-13708 needs to be conjugated to HRP to function as the detection antibody when paired with NBP3-13709. Please contact us for custom HRP-conjugated antibody.



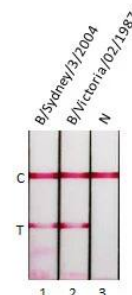
ELISA: Influenza B Virus Nucleoprotein Antibody (HL1068) [NBP3-13708] - Indirect ELISA analysis was performed by coating a plate with recombinant influenza B virus nucleoprotein (B/Sydney/3/2004), DDDDK Tag (50 ng), and probing with the specified influenza B virus nucleoprotein antibodies at the indicated concentrations. Goat anti-rabbit IgG antibody (HRP) (NBP2-19301) (1:10000) or goat anti-mouse IgG antibody (HRP) (NBP2-19382) (1:10000) were used to detect the bound primary antibodies.



Lateral Flow Assay: Influenza B nucleoprotein Antibody (HL1068) - (B/Taiwan/753/2005) [NBP3-13708] - Detection of nucleoproteins (NP) derived from SARS-CoV-2, Influenza A virus and Influenza B virus by lateral flow assay using the monoclonal antibody pair. **Capture:** S. SARS-CoV-2 (COVID-19) Nucleocapsid antibody A. Influenza A virus Nucleoprotein antibody B. Influenza B nucleoprotein antibody **Detection:** SARS-CoV-2 (COVID-19) Nucleocapsid antibody Influenza A virus Nucleoprotein antibody Influenza B nucleoprotein antibody (NBP3-13708 [HL1068]) **Samples (40 ng)** : 1. Lysis buffer 2. SARS-CoV-2 (COVID-19) Nucleocapsid protein, His tag 3. Influenza A virus Nucleoprotein (A/California/2009 (H1N1)) 4. Influenza A virus Nucleoprotein (A/Hong Kong/2671/2019 (H3N2)) 5. Influenza B nucleoprotein (B/Sydney/3/2004), DDDDK Tag 6. Influenza B nucleoprotein (B/Victoria/02/1987), DDDDK Tag 7. Mixture of SARS-CoV-2, Flu A-H1N1 and Flu B Nucleoprotein



Lateral Flow Assay: Influenza B nucleoprotein Antibody (HL1068) - (B/Taiwan/753/2005) [NBP3-13708] - Detection of influenza B virus nucleoprotein by lateral flow assay using the monoclonal antibody pair. **Capture:** Influenza B nucleoprotein antibody **Detection:** Influenza B nucleoprotein antibody (NBP3-13708 [HL1068]) **Samples (2.5 ng)** : 1. Influenza B nucleoprotein (B/Sydney/3/2004) 2. Influenza B nucleoprotein (B/Victoria/02/1987) 3. Lysis buffer





Novus Biologicals USA

10730 E. Briarwood Avenue
Centennial, CO 80112
USA
Phone: 303.730.1950
Toll Free: 1.888.506.6887
Fax: 303.730.1966
nb-customerservice@bio-techne.com

Bio-Techne Canada

21 Canmotor Ave
Toronto, ON M8Z 4E6
Canada
Phone: 905.827.6400
Toll Free: 855.668.8722
Fax: 905.827.6402
canada.inquires@bio-techne.com

Bio-Techne Ltd

19 Barton Lane
Abingdon Science Park
Abingdon, OX14 3NB, United Kingdom
Phone: (44) (0) 1235 529449
Free Phone: 0800 37 34 15
Fax: (44) (0) 1235 533420
info.EMEA@bio-techne.com

General Contact Information

www.novusbio.com
Technical Support: nb-technical@bio-techne.com
Orders: nb-customerservice@bio-techne.com
General: novus@novusbio.com

Products Related to NBP3-13708

| | |
|------------|---|
| HAF008 | Goat anti-Rabbit IgG Secondary Antibody [HRP] |
| NB7160 | Goat anti-Rabbit IgG (H+L) Secondary Antibody [HRP] |
| NBP2-24891 | Rabbit IgG Isotype Control |

Limitations

This product is for research use only and is not approved for use in humans or in clinical diagnosis. Primary Antibodies are guaranteed for 1 year from date of receipt.

For more information on our 100% guarantee, please visit www.novusbio.com/guarantee

Earn gift cards/discounts by submitting a review: www.novusbio.com/reviews/submit/NBP3-13708

Earn gift cards/discounts by submitting a publication using this product:
www.novusbio.com/publications

