

Product Datasheet

RAB6A Antibody (HL1047) - Azide and BSA Free NBP3-13701

Unit Size: 100 ul

Store at 4C short term. Aliquot and store at -20C long term. Avoid freeze-thaw cycles.

www.novusbio.com



technical@novusbio.com

Protocols, Publications, Related Products, Reviews, Research Tools and Images at:
www.novusbio.com/NBP3-13701

Updated 7/31/2025 v.20.1

**Earn rewards for product
reviews and publications.**

Submit a publication at www.novusbio.com/publications

Submit a review at www.novusbio.com/reviews/destination/NBP3-13701



NBP3-13701

RAB6A Antibody (HL1047) - Azide and BSA Free

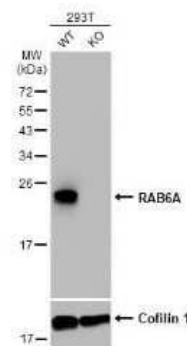
Product Information	
Unit Size	100 ul
Concentration	Concentrations vary lot to lot. See vial label for concentration. If unlisted please contact technical services.
Storage	Store at 4C short term. Aliquot and store at -20C long term. Avoid freeze-thaw cycles.
Clonality	Monoclonal
Clone	HL1047
Preservative	No Preservative
Isotype	IgG
Purity	Protein A purified
Buffer	PBS
Target Molecular Weight	24 kDa

Product Description	
Description	Centrifuge briefly prior to opening.
Host	Rabbit
Gene ID	5870
Gene Symbol	RAB6A
Species	Human, Mouse, Rat, Drosophila, Zebrafish
Immunogen	Full length human RAB6A recombinant protein.

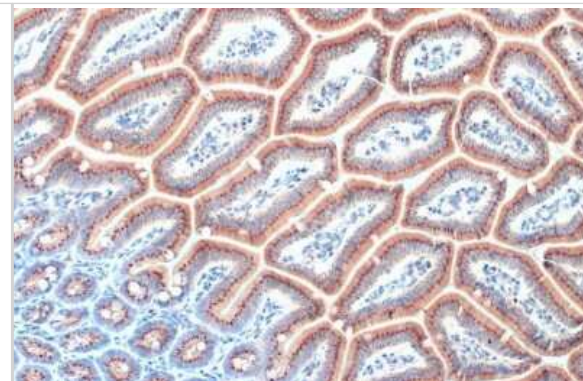
Product Application Details	
Applications	Western Blot, Immunohistochemistry-Paraffin, Immunocytochemistry/Immunofluorescence, Immunohistochemistry, Knockout Validated
Recommended Dilutions	Western Blot 1:500-1:3000, Immunohistochemistry Assay dependent, Immunocytochemistry/ Immunofluorescence Assay dependent, Immunohistochemistry-Paraffin Assay dependent, Knockout Validated Validated for Knockout from YCharOS Inc. (ycharos.com)

Images

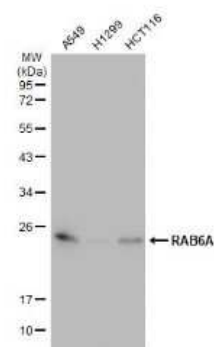
Western Blot: RAB6A Antibody (HL1047) [NBP3-13701] - Wild-type (WT) and RAB6A knockout (KO) 293T cell extracts (30 ug) were separated by 12% SDS-PAGE, and the membrane was blotted with RAB6A antibody [HL1047] (NBP3-13701) diluted at 1:1000. The HRP-conjugated anti-rabbit IgG antibody (NBP2-19301) was used to detect the primary antibody.



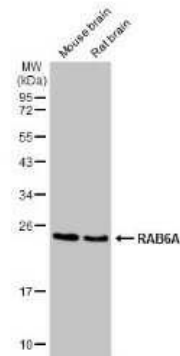
Immunohistochemistry-Paraffin: RAB6A Antibody (HL1047) [NBP3-13701] - RAB6A antibody [HL1047] detects RAB6A protein at Golgi apparatus by immunohistochemical analysis. Sample: Paraffin-embedded mouse intestine. RAB6A stained by RAB6A antibody [HL1047] (NBP3-13701) diluted at 1:100. Antigen Retrieval: Citrate buffer, pH 6.0, 15 min



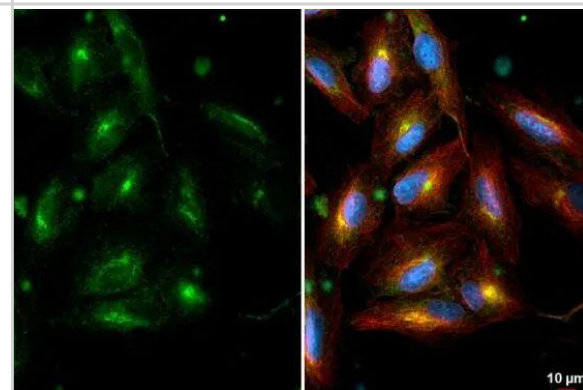
Western Blot: RAB6A Antibody (HL1047) [NBP3-13701] - Various whole cell extracts (30 ug) were separated by 12% SDS-PAGE, and the membrane was blotted with RAB6A antibody [HL1047] (NBP3-13701) diluted at 1:1000. The HRP-conjugated anti-rabbit IgG antibody (NBP2-19301) was used to detect the primary antibody.



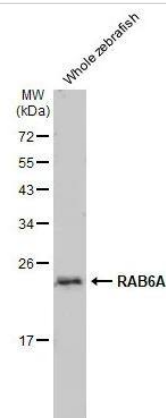
Western Blot: RAB6A Antibody (HL1047) [NBP3-13701] - Various tissue extracts (50 ug) were separated by 12% SDS-PAGE, and the membrane was blotted with RAB6A antibody [HL1047] (NBP3-13701) diluted at 1:1000. The HRP-conjugated anti-rabbit IgG antibody (NBP2-19301) was used to detect the primary antibody.



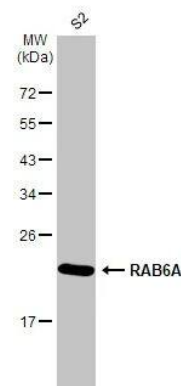
ICC/IF-RAB6A Antibody (HL1047) [NBP3-13701] - A549 cells were fixed in 4% paraformaldehyde at RT for 15 min. Green: RAB6A stained by RAB6A antibody [HL1047] diluted at 1:500. Red: alpha Tubulin, a cytoskeleton marker, stained by alpha Tubulin antibody [114] diluted at 1:1000. Blue: Fluoroshield with DAPI.



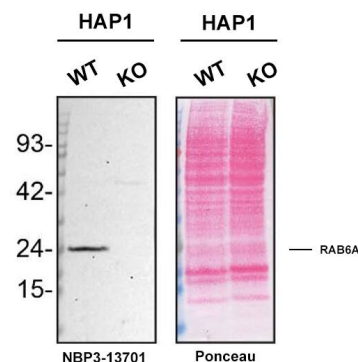
Western Blot: RAB6A Antibody (HL1047) [NBP3-13701] -Whole zebrafish extract (30 ug) was separated by 12% SDS-PAGE, and the membrane was blotted with RAB6A antibody [HL1047] diluted at 1:1000. The HRP-conjugated anti-rabbit IgG antibody (NBP2-19301) was used to detect the primary antibody, and the signal was developed with Trident ECL plus-Enhanced.



Western Blot: RAB6A Antibody (HL1047) [NBP3-13701] -Whole cell extract (30 ug) was separated by 12% SDS-PAGE, and the membrane was blotted with RAB6A antibody [HL1047] diluted at 1:1000. The HRP-conjugated anti-rabbit IgG antibody (NBP2-19301) was used to detect the primary antibody.



Western blot shows lysates of HAP1 cell line and RAB6A knockout HAP1 cell line (KO). Nitrocellulose membrane was probed with RAB6A Antibody (HL1047) (Catalog # NBP3-13701) followed by HRP-conjugated secondary antibody. A specific band was detected for RAB6A at approximately 24 kDa (as indicated) in the parental HAP1 cell line, but is not detectable in knockout HAP1 cell line. Primary antibody dilution used: 1/200. The Ponceau stained transfer of the blot is shown. This experiment was conducted under reducing conditions. Image, protocol, and testing courtesy of YCharOS Inc. See ycharos.com for additional details.





Novus Biologicals USA

10730 E. Briarwood Avenue
Centennial, CO 80112
USA
Phone: 303.730.1950
Toll Free: 1.888.506.6887
Fax: 303.730.1966
nb-customerservice@bio-techne.com

Bio-Techne Canada

21 Canmotor Ave
Toronto, ON M8Z 4E6
Canada
Phone: 905.827.6400
Toll Free: 855.668.8722
Fax: 905.827.6402
canada.inquires@bio-techne.com

Bio-Techne Ltd

19 Barton Lane
Abingdon Science Park
Abingdon, OX14 3NB, United Kingdom
Phone: (44) (0) 1235 529449
Free Phone: 0800 37 34 15
Fax: (44) (0) 1235 533420
info.EMEA@bio-techne.com

General Contact Information

www.novusbio.com
Technical Support: nb-technical@bio-techne.com
Orders: nb-customerservice@bio-techne.com
General: novus@novusbio.com

Products Related to NBP3-13701

HAF008	Goat anti-Rabbit IgG Secondary Antibody [HRP]
NB7160	Goat anti-Rabbit IgG (H+L) Secondary Antibody [HRP]
NBP2-24891	Rabbit IgG Isotype Control
NBP1-50915-0.05mg	Recombinant Human RAB6A His Protein

Limitations

This product is for research use only and is not approved for use in humans or in clinical diagnosis. Primary Antibodies are guaranteed for 1 year from date of receipt.

For more information on our 100% guarantee, please visit www.novusbio.com/guarantee

Earn gift cards/discounts by submitting a review: www.novusbio.com/reviews/submit/NBP3-13701

Earn gift cards/discounts by submitting a publication using this product:
www.novusbio.com/publications

