

Product Datasheet

RPB2 Antibody (HL1042) - Azide and BSA Free NBP3-13697

Unit Size: 100 ul

Store at 4C short term. Aliquot and store at -20C long term. Avoid freeze-thaw cycles.

www.novusbio.com



technical@novusbio.com

Protocols, Publications, Related Products, Reviews, Research Tools and Images at:
www.novusbio.com/NBP3-13697

Updated 7/31/2025 v.20.1

**Earn rewards for product
reviews and publications.**

Submit a publication at www.novusbio.com/publications

Submit a review at www.novusbio.com/reviews/destination/NBP3-13697



NBP3-13697

RPB2 Antibody (HL1042) - Azide and BSA Free

Product Information

Unit Size	100 ul
Concentration	Concentrations vary lot to lot. See vial label for concentration. If unlisted please contact technical services.
Storage	Store at 4C short term. Aliquot and store at -20C long term. Avoid freeze-thaw cycles.
Clonality	Monoclonal
Clone	HL1042
Preservative	No Preservative
Isotype	IgG
Purity	Protein A purified
Buffer	PBS

Product Description

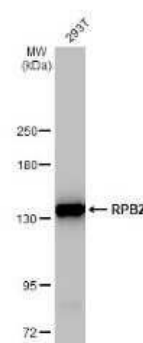
Description	Centrifuge briefly prior to opening.
Host	Rabbit
Gene ID	5431
Gene Symbol	POLR2B
Species	Human
Immunogen	Recombinant protein encompassing a sequence within the N-terminus region of human RPB2. The exact sequence is proprietary.

Product Application Details

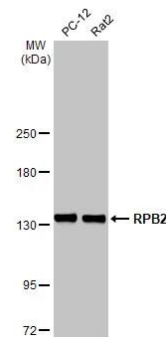
Applications	Western Blot
Recommended Dilutions	Western Blot

Images

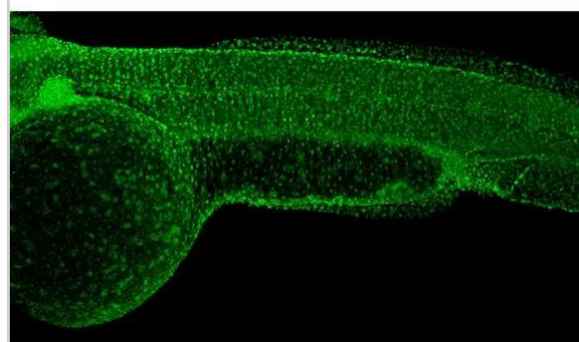
Western Blot: RPB2 Antibody (HL1042) [NBP3-13697] - 293T whole cell extracts (30 ug) was separated by 5% SDS-PAGE, and the membrane was blotted with RPB2 antibody [HL1042] (NBP3-13697) diluted at 1:1000. The HRP-conjugated anti-rabbit IgG antibody (NBP2-19301) was used to detect the primary antibody.



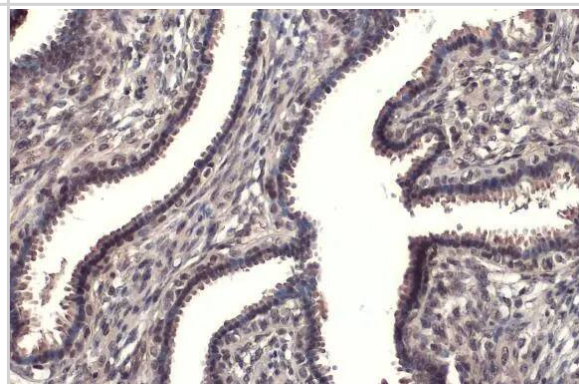
Western Blot: RPB2 Antibody (HL1042) [NBP3-13697] - Various whole cell extracts (30 ug) were separated by 5% SDS-PAGE, and the membrane was blotted with RPB2 antibody [HL1042] (NBP3-13697) diluted at 1:5000. The HRP-conjugated anti-rabbit IgG antibody was used to detect the primary antibody.



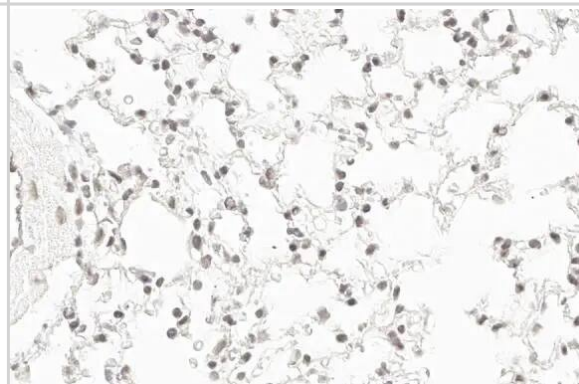
Immunohistochemistry: RPB2 Antibody (HL1042) [NBP3-13697] - RPB2 antibody [HL1042] detects RPB2 protein on whole mount zebrafish by immunohistochemical analysis. Sample: Paraformaldehyde-fixed 2 days-post-fertilization zebrafish embryo. Green: RPB2 stained by RPB2 antibody [HL1042] (NBP3-13697) diluted at 1:100. Antigen Retrieval: Tris-HCl buffer, pH 9.0, 20 min at 70°C



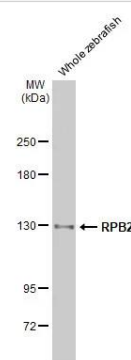
Immunohistochemistry-Paraffin: RPB2 Antibody (HL1042) [NBP3-13697] - RPB2 antibody [HL1042] detects RPB2 protein at nucleus by immunohistochemical analysis. Sample: Paraffin-embedded human breast carcinoma. RPB2 stained by RPB2 antibody [HL1042] (NBP3-13697) diluted at 1:100. Antigen Retrieval: Citrate buffer, pH 6.0, 15 min



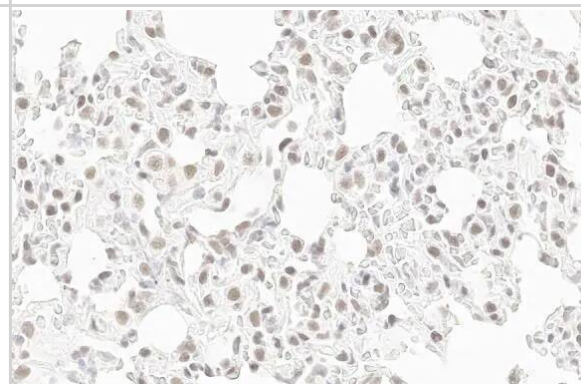
Immunohistochemistry-Paraffin: RPB2 Antibody (HL1042) [NBP3-13697] - RPB2 antibody [HL1042] detects RPB2 protein by immunohistochemical analysis. Sample: Paraffin-embedded mouse lung. RPB2 stained by RPB2 antibody [HL1042] (NBP3-13697) diluted at 1:100. Antigen Retrieval: Citrate buffer, pH 6.0, 15 min



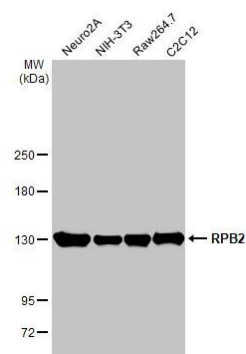
Western Blot: RPB2 Antibody (HL1042) [NBP3-13697] - Whole zebrafish extract (30 ug) was separated by 5% SDS-PAGE, and the membrane was blotted with RPB2 antibody [HL1042] (NBP3-13697) diluted at 1:1000. The HRP-conjugated anti-rabbit IgG antibody was used to detect the primary antibody.



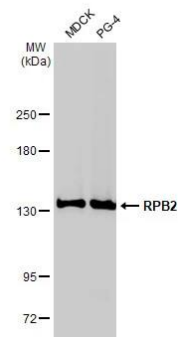
Immunohistochemistry-Paraffin: RPB2 Antibody (HL1042) [NBP3-13697] - RPB2 antibody [HL1042] detects RPB2 protein by immunohistochemical analysis. Sample: Paraffin-embedded rat lung. RPB2 stained by RPB2 antibody [HL1042] (NBP3-13697) diluted at 1:100. Antigen Retrieval: Citrate buffer, pH 6.0, 15 min



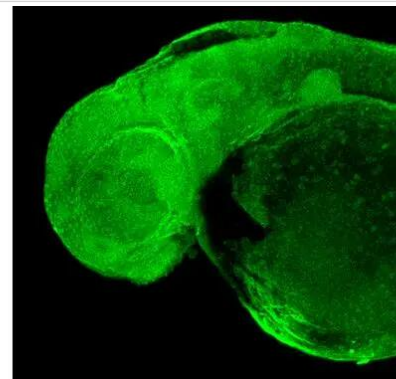
Western Blot: RPB2 Antibody (HL1042) [NBP3-13697] - Various whole cell extracts (30 ug) were separated by 5% SDS-PAGE, and the membrane was blotted with RPB2 antibody [HL1042] (NBP3-13697) diluted at 1:1000. The HRP-conjugated anti-rabbit IgG antibody was used to detect the primary antibody.



Western Blot: RPB2 Antibody (HL1042) [NBP3-13697] - Various whole cell extracts (30 ug) were separated by 5% SDS-PAGE, and the membrane was blotted with RPB2 antibody [HL1042] (NBP3-13697) diluted at 1:1000. The HRP-conjugated anti-rabbit IgG antibody was used to detect the primary antibody.



Immunohistochemistry: RPB2 Antibody (HL1042) [NBP3-13697] - RPB2 antibody [HL1042] detects RPB2 protein on whole mount zebrafish by immunohistochemical analysis. Sample: Paraformaldehyde-fixed 2 days-post-fertilization zebrafish embryo. Green: RPB2 stained by RPB2 antibody [HL1042] (NBP3-13697) diluted at 1:100. Antigen Retrieval: Tris-HCl buffer, pH 9.0, 20 min at 70°C





Novus Biologicals USA

10730 E. Briarwood Avenue
Centennial, CO 80112
USA
Phone: 303.730.1950
Toll Free: 1.888.506.6887
Fax: 303.730.1966
nb-customerservice@bio-techne.com

Bio-Techne Canada

21 Canmotor Ave
Toronto, ON M8Z 4E6
Canada
Phone: 905.827.6400
Toll Free: 855.668.8722
Fax: 905.827.6402
canada.inquires@bio-techne.com

Bio-Techne Ltd

19 Barton Lane
Abingdon Science Park
Abingdon, OX14 3NB, United Kingdom
Phone: (44) (0) 1235 529449
Free Phone: 0800 37 34 15
Fax: (44) (0) 1235 533420
info.EMEA@bio-techne.com

General Contact Information

www.novusbio.com
Technical Support: nb-technical@bio-techne.com
Orders: nb-customerservice@bio-techne.com
General: novus@novusbio.com

Products Related to NBP3-13697

HAF008	Goat anti-Rabbit IgG Secondary Antibody [HRP]
NB7160	Goat anti-Rabbit IgG (H+L) Secondary Antibody [HRP]
NBP2-24891	Rabbit IgG Isotype Control
NBP1-87786PEP	RPB2 Recombinant Protein Antigen

Limitations

This product is for research use only and is not approved for use in humans or in clinical diagnosis. Primary Antibodies are guaranteed for 1 year from date of receipt.

For more information on our 100% guarantee, please visit www.novusbio.com/guarantee

Earn gift cards/discounts by submitting a review: www.novusbio.com/reviews/submit/NBP3-13697

Earn gift cards/discounts by submitting a publication using this product:
www.novusbio.com/publications

