

Product Datasheet

Sodium Potassium ATPase Alpha 1 Antibody (HL114) - Azide and BSA Free NBP3-13660

Unit Size: 100 ul

Store at 4C short term. Aliquot and store at -20C long term. Avoid freeze-thaw cycles.

www.novusbio.com



technical@novusbio.com

Protocols, Publications, Related Products, Reviews, Research Tools and Images at:
www.novusbio.com/NBP3-13660

Updated 7/31/2025 v.20.1

Earn rewards for product
reviews and publications.

Submit a publication at www.novusbio.com/publications

Submit a review at www.novusbio.com/reviews/destination/NBP3-13660



NBP3-13660

Sodium Potassium ATPase Alpha 1 Antibody (HL114) - Azide and BSA Free

Product Information

Unit Size	100 ul
Concentration	Concentrations vary lot to lot. See vial label for concentration. If unlisted please contact technical services.
Storage	Store at 4C short term. Aliquot and store at -20C long term. Avoid freeze-thaw cycles.
Clonality	Monoclonal
Clone	HL114
Preservative	No Preservative
Isotype	IgG
Purity	Protein A purified
Buffer	PBS

Product Description

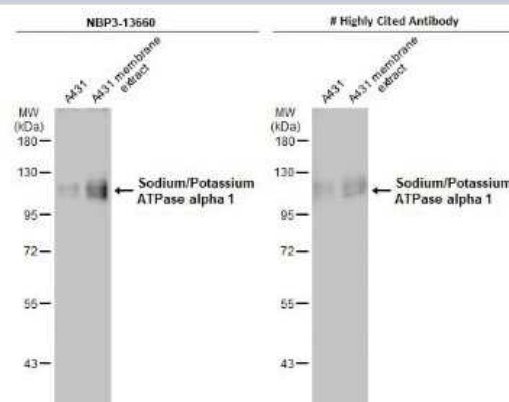
Description	Centrifuge briefly prior to opening.
Host	Rabbit
Gene ID	476
Gene Symbol	ATP1A1
Species	Human, Mouse, Rat
Immunogen	The immunogen used to generate this antibody corresponds to chicken Sodium Potassium ATPase Alpha 1.

Product Application Details

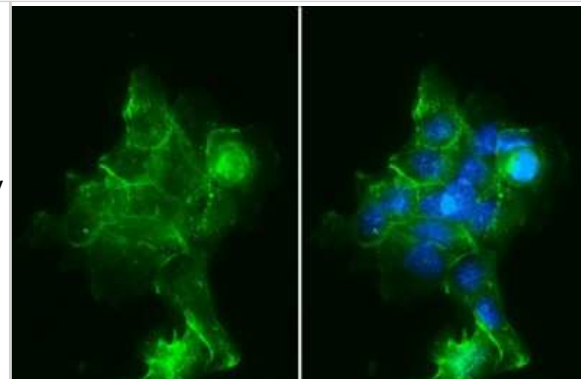
Applications	Western Blot, Immunohistochemistry-Paraffin, Immunocytochemistry/Immunofluorescence, Immunohistochemistry
Recommended Dilutions	Western Blot, Immunohistochemistry, Immunocytochemistry/Immunofluorescence, Immunohistochemistry-Paraffin

Images

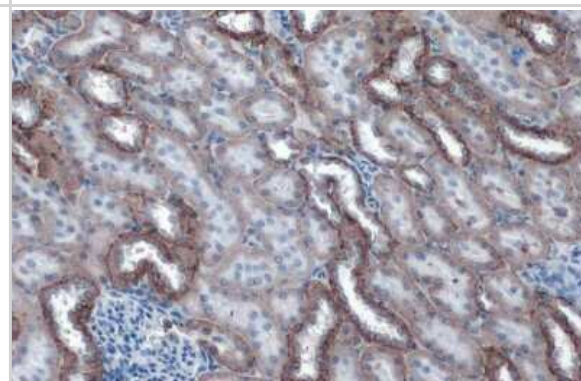
Western Blot: Sodium Potassium ATPase Alpha 1 Antibody (HL114) [NBP3-13660] - A431 whole cell and membrane extracts (30 ug) were separated by 7.5% SDS-PAGE, and the membranes were blotted with Sodium Potassium ATPase Alpha 1 antibody [HL114] (NBP3-13660) diluted at 1:500 and competitor's antibody diluted at 1:500. The HRP-conjugated anti-rabbit IgG antibody (NBP2-19301) was used to detect the primary antibody.



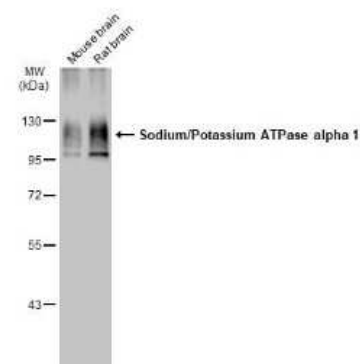
Immunocytochemistry/Immunofluorescence: Sodium Potassium ATPase Alpha 1 Antibody (HL114) [NBP3-13660] - Sodium Potassium ATPase Alpha 1 antibody [HL114] detects Sodium Potassium ATPase Alpha 1 protein at cell membrane by immunofluorescent analysis. Sample: A431 cells were fixed in ice-cold MeOH for 5 min. Green: Sodium Potassium ATPase Alpha 1 stained by Sodium Potassium ATPase Alpha 1 antibody [HL114] (NBP3-13660) diluted at 1:500. Blue: Fluoroshield with DAPI.



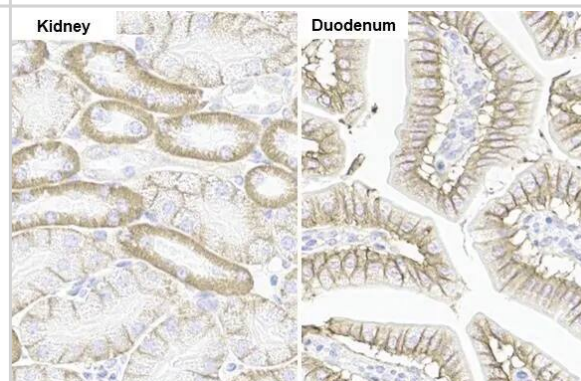
Immunohistochemistry-Paraffin: Sodium Potassium ATPase Alpha 1 Antibody (HL114) [NBP3-13660] - Sodium Potassium ATPase Alpha 1 antibody [HL114] detects Sodium Potassium ATPase Alpha 1 protein at cell membrane by immunohistochemical analysis. Sample: Paraffin-embedded mouse kidney. Sodium Potassium ATPase Alpha 1 stained by Sodium Potassium ATPase Alpha 1 antibody [HL114] (NBP3-13660) diluted at 1:200. Antigen Retrieval: Citrate buffer, pH 6.0, 15 min



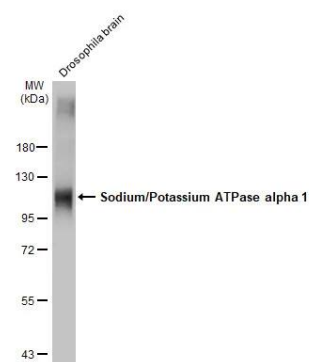
Western Blot: Sodium Potassium ATPase Alpha 1 Antibody (HL114) [NBP3-13660] - Various tissue extracts (50 ug) were separated by 7.5% SDS-PAGE, and the membrane was blotted with Sodium Potassium ATPase Alpha 1 antibody [HL114] (NBP3-13660) diluted at 1:50000. The HRP-conjugated anti-rabbit IgG antibody (NBP2-19301) was used to detect the primary antibody.



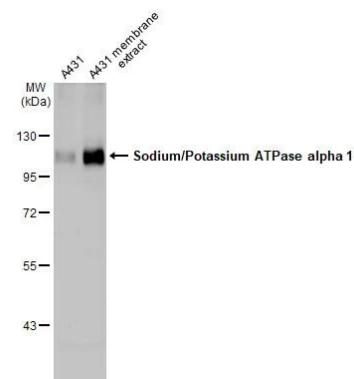
Immunohistochemistry-Paraffin: Sodium Potassium ATPase Alpha 1 Antibody (HL114) [NBP3-13660] - Sodium Potassium ATPase Alpha 1 antibody [HL114] detects Sodium Potassium ATPase Alpha 1 protein by immunohistochemical analysis. Sample: Paraffin-embedded mouse tissues. Sodium Potassium ATPase Alpha 1 stained by Sodium Potassium ATPase Alpha 1 antibody [HL114] (NBP3-13660) diluted at 1:100. Antigen Retrieval: Citrate buffer, pH 6.0, 15 min



Western Blot: Sodium Potassium ATPase Alpha 1 Antibody (HL114) [NBP3-13660] - Drosophila tissue extract (5 ug) was separated by 7.5% SDS-PAGE, and the membrane was blotted with Sodium Potassium ATPase Alpha 1 antibody [HL114] (NBP3-13660) diluted at 1:30000. The HRP-conjugated anti-rabbit IgG antibody was used to detect the primary antibody.



Western Blot: Sodium Potassium ATPase Alpha 1 Antibody (HL114) [NBP3-13660] - A431 whole cell and membrane extracts (30 ug) were separated by 7.5% SDS-PAGE, and the membrane was blotted with Sodium Potassium ATPase Alpha 1 antibody [HL114] (NBP3-13660) diluted at 1:500. The HRP-conjugated anti-rabbit IgG antibody was used to detect the primary antibody.





Novus Biologicals USA

10730 E. Briarwood Avenue
Centennial, CO 80112
USA
Phone: 303.730.1950
Toll Free: 1.888.506.6887
Fax: 303.730.1966
nb-customerservice@bio-techne.com

Bio-Techne Canada

21 Canmotor Ave
Toronto, ON M8Z 4E6
Canada
Phone: 905.827.6400
Toll Free: 855.668.8722
Fax: 905.827.6402
canada.inquires@bio-techne.com

Bio-Techne Ltd

19 Barton Lane
Abingdon Science Park
Abingdon, OX14 3NB, United Kingdom
Phone: (44) (0) 1235 529449
Free Phone: 0800 37 34 15
Fax: (44) (0) 1235 533420
info.EMEA@bio-techne.com

General Contact Information

www.novusbio.com
Technical Support: nb-technical@bio-techne.com
Orders: nb-customerservice@bio-techne.com
General: novus@novusbio.com

Products Related to NBP3-13660

HAF008	Goat anti-Rabbit IgG Secondary Antibody [HRP]
NB7160	Goat anti-Rabbit IgG (H+L) Secondary Antibody [HRP]
NBP2-24891	Rabbit IgG Isotype Control
NBL1-07807	Sodium Potassium ATPase Alpha 1 Overexpression Lysate

Limitations

This product is for research use only and is not approved for use in humans or in clinical diagnosis. Primary Antibodies are guaranteed for 1 year from date of receipt.

For more information on our 100% guarantee, please visit www.novusbio.com/guarantee

Earn gift cards/discounts by submitting a review: www.novusbio.com/reviews/submit/NBP3-13660

Earn gift cards/discounts by submitting a publication using this product:
www.novusbio.com/publications

