

Product Datasheet

AIF-1/Iba1 Antibody (HL22) - Azide and BSA Free NBP3-13648

Unit Size: 100 ul

Store at 4C short term. Aliquot and store at -20C long term. Avoid freeze-thaw cycles.

www.novusbio.com



technical@novusbio.com

Protocols, Publications, Related Products, Reviews, Research Tools and Images at:
www.novusbio.com/NBP3-13648

Updated 7/31/2025 v.20.1

**Earn rewards for product
reviews and publications.**

Submit a publication at www.novusbio.com/publications

Submit a review at www.novusbio.com/reviews/destination/NBP3-13648



NBP3-13648

AIF-1/Iba1 Antibody (HL22) - Azide and BSA Free

Product Information

Unit Size	100 ul
Concentration	Concentrations vary lot to lot. See vial label for concentration. If unlisted please contact technical services.
Storage	Store at 4C short term. Aliquot and store at -20C long term. Avoid freeze-thaw cycles.
Clonality	Monoclonal
Clone	HL22
Preservative	No Preservative
Isotype	IgG
Purity	Protein A purified
Buffer	PBS
Target Molecular Weight	17 kDa

Product Description

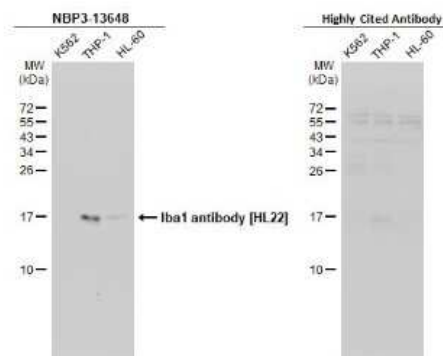
Description	Centrifuge briefly prior to opening.
Host	Rabbit
Gene ID	199
Gene Symbol	AIF1
Species	Human, Mouse, Rat
Immunogen	Carrier-protein conjugated synthetic peptide encompassing a sequence within the C-terminus region of human AIF-1/Iba1. The exact sequence is proprietary.

Product Application Details

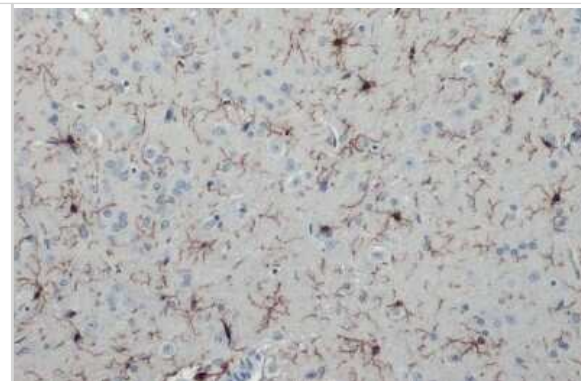
Applications	Western Blot, Immunohistochemistry-Paraffin, Immunocytochemistry/Immunofluorescence, Immunohistochemistry, Immunohistochemistry-Frozen
Recommended Dilutions	Western Blot 1:500-1:3000, Immunohistochemistry 1:100-1:1000, Immunocytochemistry/ Immunofluorescence -Assay dependent, Immunohistochemistry-Paraffin 1:100-1:1000, Immunohistochemistry-Frozen 1:100-1:1000

Images

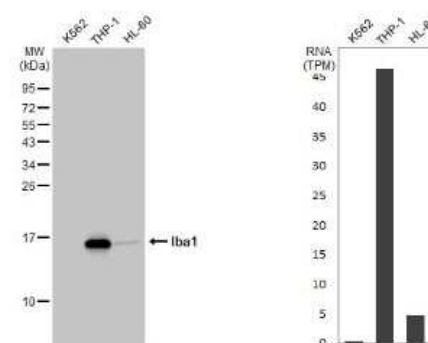
Western Blot: AIF-1/Iba1 Antibody (HL22) [NBP3-13648] - Various whole cell extracts (30 ug) were separated by 15% SDS-PAGE, and the membranes were blotted with AIF-1/Iba1 antibody [HL22] (NBP3-13648) diluted at 1:1000 and competitor's antibody diluted at 1:1000. The HRP-conjugated anti-rabbit IgG antibody (NBP2-19301) was used to detect the primary antibody, and the signal was developed with Trident ECL plus-Enhanced.



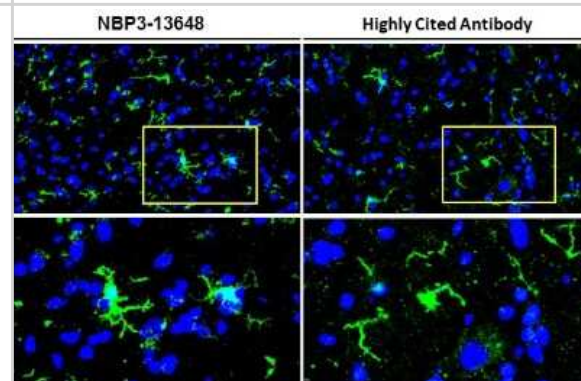
Immunohistochemistry-Paraffin: AIF-1/Iba1 Antibody (HL22) [NBP3-13648] - Rat brain. AIF-1/Iba1 stained by AIF-1/Iba1 antibody [HL22] (NBP3-13648) diluted at 1:100. Antigen Retrieval: Citrate buffer, pH 6.0, 15 min



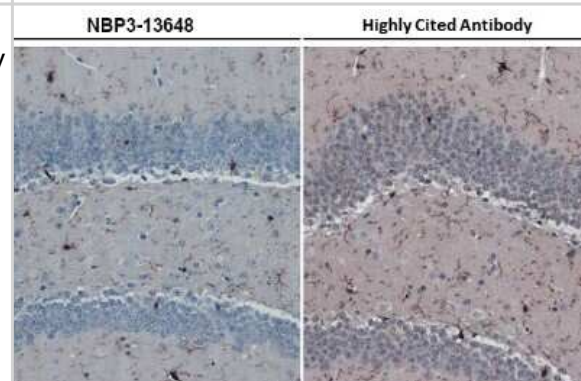
Western Blot: AIF-1/Iba1 Antibody (HL22) [NBP3-13648] - Various whole cell extracts (30 ug) were separated by 15% SDS-PAGE, and the membrane was blotted with AIF-1/Iba1 antibody [HL22] (NBP3-13648) diluted at 1:1000. The HRP-conjugated anti-rabbit IgG antibody (NBP2-19301) was used to detect the primary antibody. Corresponding RNA expression data for the same cell lines are based on Human Protein Atlas program.



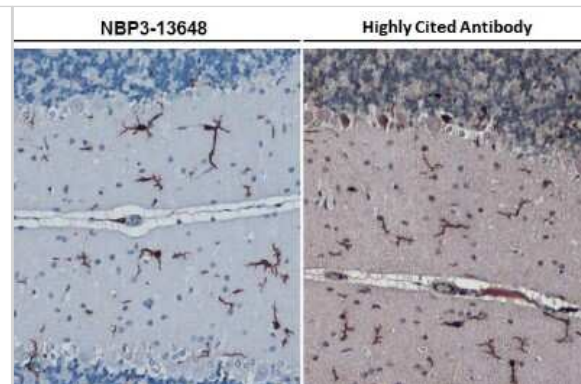
Immunohistochemistry-Frozen: AIF-1/Iba1 Antibody (HL22) [NBP3-13648] - AIF-1/Iba1 antibody [HL22] detects AIF-1/Iba1 protein by immunohistochemical analysis. Sample: Frozen-sectioned mouse spinal cord. Green: AIF-1/Iba1 stained by AIF-1/Iba1 antibody [HL22] (NBP3-13648) diluted at 1:200. Blue: Fluoroshield with DAPI.



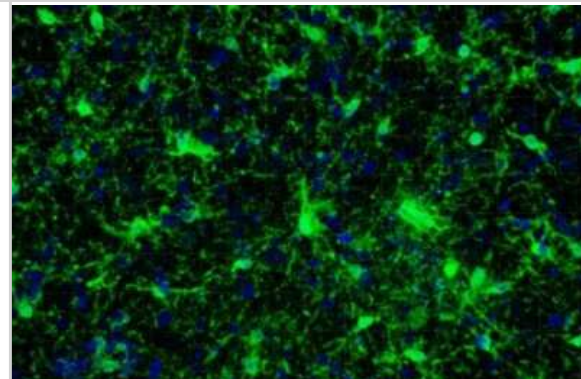
Immunohistochemistry-Paraffin: AIF-1/Iba1 Antibody (HL22) [NBP3-13648] - Mouse hippocampus. AIF-1/Iba1 stained by AIF-1/Iba1 antibody [HL22] (NBP3-13648) diluted at 1:1000. Antigen Retrieval: Citrate buffer, pH 6.0, 15 min



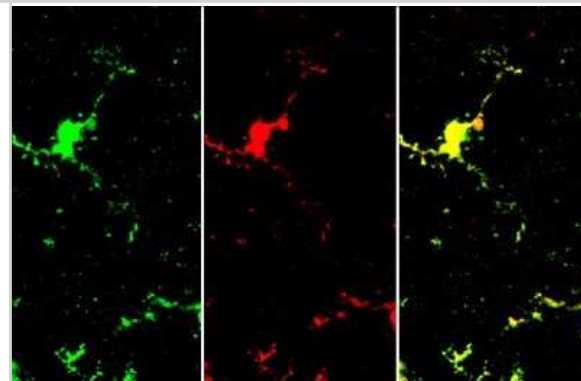
Immunohistochemistry-Paraffin: AIF-1/Iba1 Antibody (HL22) [NBP3-13648] - Rat cerebellum. AIF-1/Iba1 stained by AIF-1/Iba1 antibody [HL22] (NBP3-13648) diluted at 1:1000. Antigen Retrieval: Citrate buffer, pH 6.0, 15 min



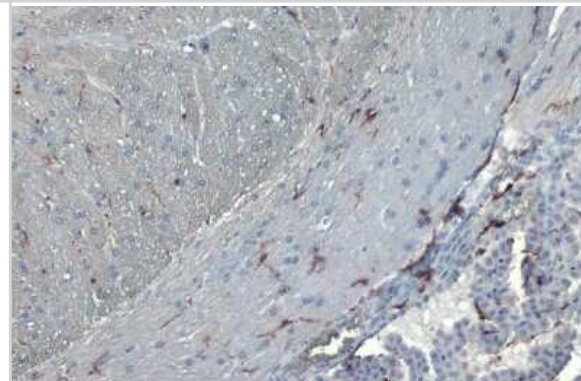
Immunohistochemistry-Paraffin: AIF-1/Iba1 Antibody (HL22) [NBP3-13648] - AIF-1/Iba1 antibody [HL22] detects AIF-1/Iba1 protein by immunohistochemical analysis. Sample: Paraffin-embedded mouse brain. Green: AIF-1/Iba1 stained by AIF-1/Iba1 antibody [HL22] (NBP3-13648) diluted at 1:150. Blue: Fluoroshield with DAPI.



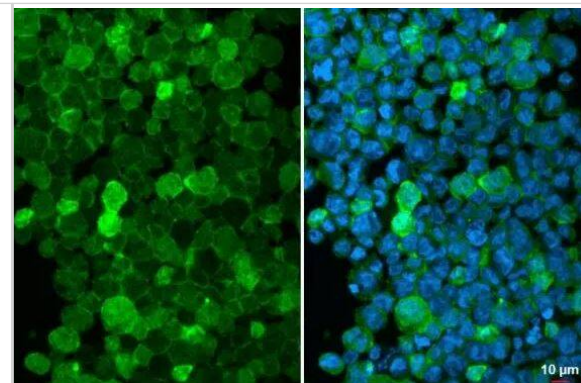
Immunohistochemistry-Frozen: AIF-1/Iba1 Antibody (HL22) [NBP3-13648] - AIF-1/Iba1 antibody [HL22] detects AIF-1/Iba1 protein by immunohistochemical analysis. Sample: Frozen-sectioned mouse brain. Green: AIF-1/Iba1 stained by AIF-1/Iba1 antibody [HL22] (NBP3-13648) diluted at 1:100. Red: AIF-1/Iba1 stained by AIF-1/Iba1 antibody [HL22-RT] diluted at 1:100. Blue: Fluoroshield with DAPI.



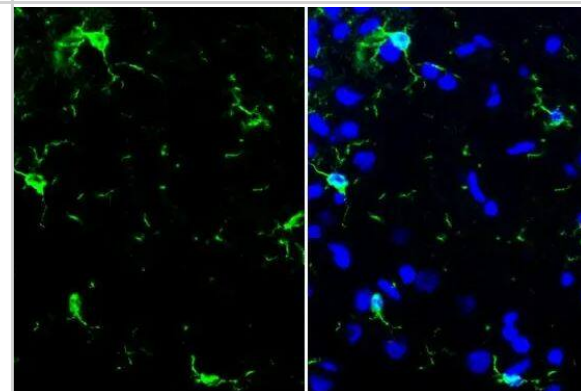
Immunohistochemistry-Paraffin: AIF-1/Iba1 Antibody (HL22) [NBP3-13648] - Mouse brain. AIF-1/Iba1 stained by AIF-1/Iba1 antibody [HL22] (NBP3-13648) diluted at 1:100. Antigen Retrieval: Citrate buffer, pH 6.0, 15 min



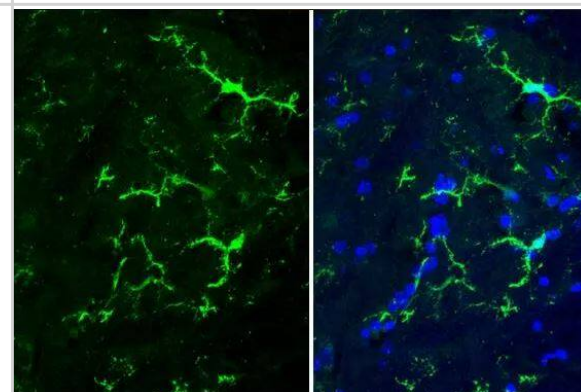
Immunocytochemistry/Immunofluorescence: AIF-1/Iba1 Antibody (HL22) [NBP3-13648] - THP-1 cells were fixed in 4% paraformaldehyde at RT for 15 min. Green: Iba1 stained by Iba1 antibody [HL22] diluted at 1:500. Blue: Hoechst 33342 staining.



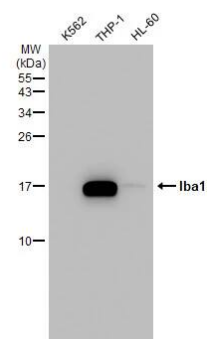
Immunohistochemistry-Paraffin: AIF-1/Iba1 Antibody (HL22) [NBP3-13648] - Rat brain. Iba1 stained by Iba1 antibody [HL22] conjugated with DyLight488 diluted at 1:200. Blue: Fluoroshield with DAPI. Antigen Retrieval: Citrate buffer, pH 6.0, 15 min.



Immunohistochemistry-Frozen: AIF-1/Iba1 Antibody (HL22) [NBP3-13648] - Frozen-sectioned mouse spinal cord. Green: Iba1 stained by Iba1 antibody [HL22] diluted at 1:100. Blue: Fluoroshield with DAPI.



Western Blot: AIF-1/Iba1 Antibody (HL22) [NBP3-13648] - Various whole cell extracts (30 ug) were separated by 15% SDS-PAGE, and the membrane was blotted with AIF-1/Iba1 antibody [HL22] (NBP3-13648) diluted at 1:1000. The HRP-conjugated anti-rabbit IgG antibody was used to detect the primary antibody.





Novus Biologicals USA

10730 E. Briarwood Avenue
Centennial, CO 80112
USA
Phone: 303.730.1950
Toll Free: 1.888.506.6887
Fax: 303.730.1966
nb-customerservice@bio-techne.com

Bio-Techne Canada

21 Canmotor Ave
Toronto, ON M8Z 4E6
Canada
Phone: 905.827.6400
Toll Free: 855.668.8722
Fax: 905.827.6402
canada.inquires@bio-techne.com

Bio-Techne Ltd

19 Barton Lane
Abingdon Science Park
Abingdon, OX14 3NB, United Kingdom
Phone: (44) (0) 1235 529449
Free Phone: 0800 37 34 15
Fax: (44) (0) 1235 533420
info.EMEA@bio-techne.com

General Contact Information

www.novusbio.com
Technical Support: nb-technical@bio-techne.com
Orders: nb-customerservice@bio-techne.com
General: novus@novusbio.com

Products Related to NBP3-13648

HAF008	Goat anti-Rabbit IgG Secondary Antibody [HRP]
NB7160	Goat anti-Rabbit IgG (H+L) Secondary Antibody [HRP]
NBP2-24891	Rabbit IgG Isotype Control
NBP1-51074-0.1mg	Recombinant Human AIF-1/Iba1 His Protein

Limitations

This product is for research use only and is not approved for use in humans or in clinical diagnosis. Primary Antibodies are guaranteed for 1 year from date of receipt.

For more information on our 100% guarantee, please visit www.novusbio.com/guarantee

Earn gift cards/discounts by submitting a review: www.novusbio.com/reviews/submit/NBP3-13648

Earn gift cards/discounts by submitting a publication using this product:
www.novusbio.com/publications

